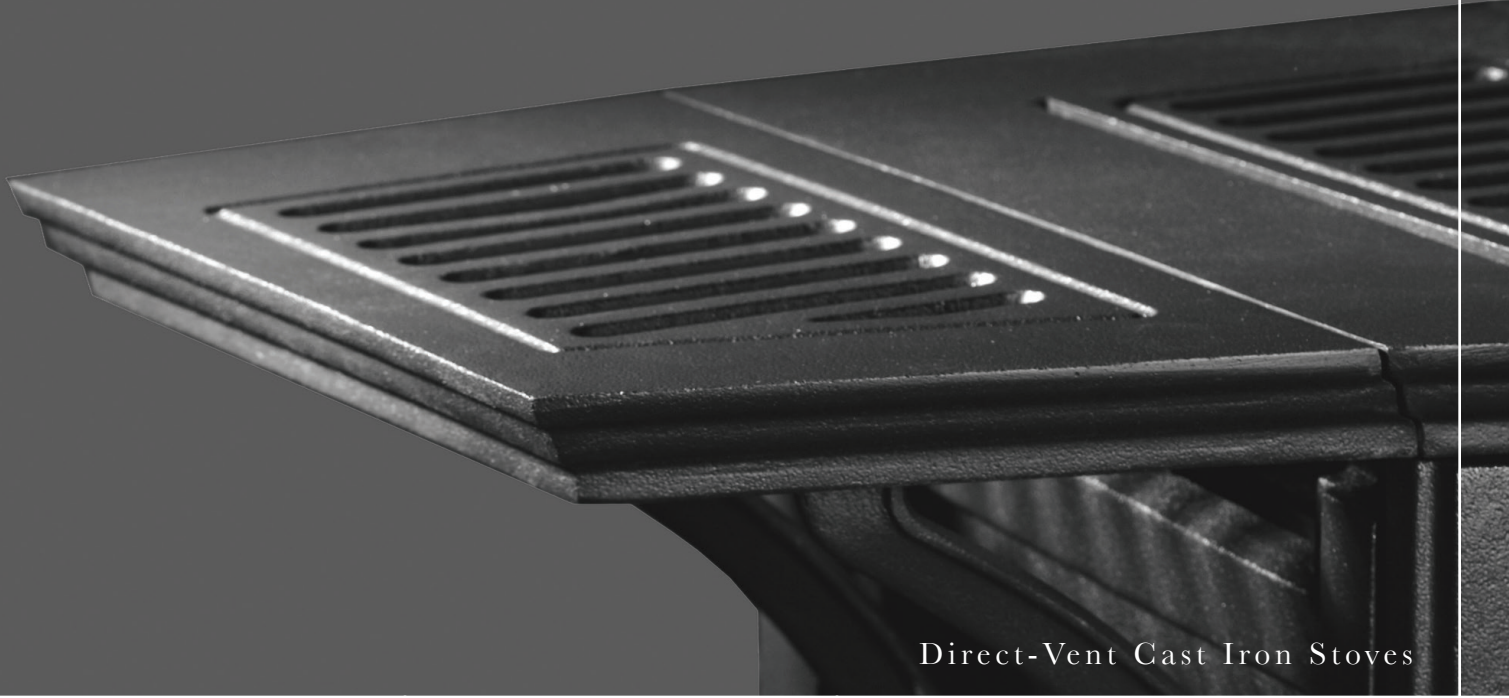


# EMPIRE

Cast Iron Stoves



Direct-Vent Cast Iron Stoves





*Empire Medium Direct-Vent Stove in Porcelain Black with optional Side Shelves and required Barrier Screen in matte black*

## **Empire Direct-Vent Gas Stoves**

Direct-vent Empire Stoves come standard with Empire's Slope Glaze Burner system with expanded ember bed for extra glow. Ceramic beads within the burner swirl and tumble the gas to create naturally swirling flames that are indistinguishable from a wood fire. Topped off with the hand-painted ceramic fiber log set and glowing embers, the effect is stunningly realistic.

## Medium Size Stoves

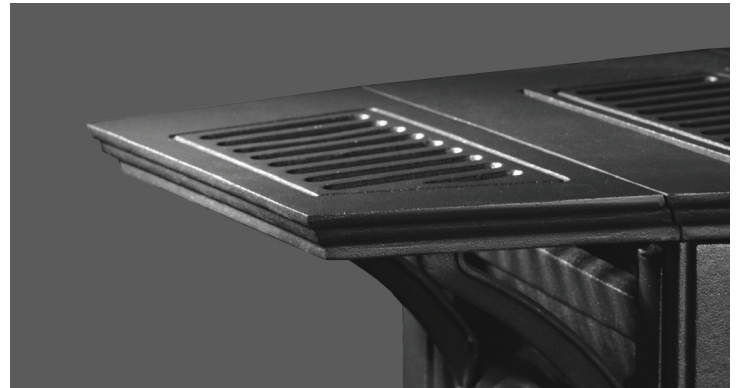
- 27,000 BTUs Slope Glaze Burner
- Richly detailed casting
- Fully operable decorative cast iron doors
- Available in three finishes: porcelain black, porcelain mahogany, and matte black
- Includes matte black barrier screen (required)
- Optional side shelf sets available
- Optional floor pads available



*Empire Compact Direct-Vent Stove in Porcelain Mahogany with required Barrier Screen in matte black*

## Compact Size Stoves

- 20,000 BTUs Slope Glaze Burner
- Richly detailed casting
- Decorative cast iron doors (non-operable)
- Available in three finishes: porcelain black, porcelain mahogany, and matte black
- Includes matte black barrier screen (required)
- Optional side shelf sets available
- Optional floor pads available



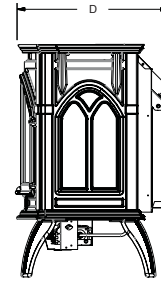
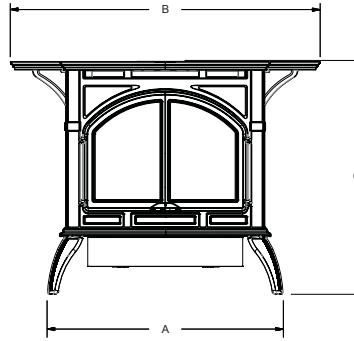
*Optional Matching Side Shelf Kit*

Empire Cast Iron Stove Finish Options				
Stove Size	Control	Porcelain Black	Porcelain Mahogany	Matte Black
Compact	Millivolt	DVP-20-CC30B	DVP-20-CC30M	DVP-20-CC30F
Compact	Intermittent Pilot	DVP-20-CC70B	DVP-20-CA70M	DVP-20-CC70F
Medium	Millivolt	DVP-30-CC30B	DVP-30-CC30M	DVP-30-CC30F
Medium	Intermittent Pilot	DVP-30-CC70B	DVP-30-CC70M	DVP-30-CC70F

Stone Colors for Inlays & Floor Pads				
	American Beauty Marble	Pearl Marble	Cappuccino Marble	Graphite Granite
Stone Inlay for Medium Stove <i>(replaces metal grill inlay on Medium Stoves only)</i>	CSI012A	CSI15P	CSI13N	CSI14H
Traditional Floor Pad Stone Inlay Kit (CIFPB-1)	CIFS12A	CIFS15P	CIFS13N	CIFS14H
Corner Floor Pad Stone Inlay Kit (CIFPB-1C)	CIFS12AC	CIFS15PC	CIFS13NC	CIFS14HC

Model	A	B	C	D
DVP-20-CC	21 1/2	32 3/4	24 1/8	15 3/8
DVP-30-CC	28 1/16	37	27 3/4	17 1/8

Clearance to Combustible Materials			
Side Wall	6 in.	Adjacent Corner Wall	4 in.
Back Wall	2 in.	Ceiling	36 in.



## Gas Inlet

Type of Gas	Natural or Propane
Iron Pipe Size (N.P.T.)	1/2-inch DVP
Ignition System	Standing Pilot/Piezo or Intermittent Pilot

## Warranty

10-year limited warranty on combustion chamber, limited lifetime on glass.

All other parts carry a three-year limited warranty.

All remote controls carry a one-year limited warranty.

Empire Comfort Systems is committed to continuous product improvement; specifications are subject to change without notice. Flame size, shape and color will vary from photos.

Member of the following industry associations:



This appliance is design-certified to the ANSI standard by:



SINCE 1932

918 Freeburg Ave.

Belleville, IL 62220-2623

E-mail: [info@empirecomfort.com](mailto:info@empirecomfort.com)

ECS-00915 11/22/19