



BOLA  
OUTDOOR GAS FIRE BOWL



Unit Illustrated: FP2085LPT Outdoor Fire Pit – Propane, FPB305GT Smooth Grey Concrete Fire Bowl.



<b>Model</b>	FP2085NT	FP2085LPT
<b>Fuel</b>	Natural	Propane
<b>Input</b>	57,000 BTU	64,000 BTU
<b>Size</b>	20" D x 4 1/2"H	20" D x 4 1/2"H

<b>BOLA 30</b>	FPB30SGT	FPB30TBT
<b>Color</b>	Smooth Grey	Textured Charcoal
<b>Size</b>	30" D x 14" H	30" D x 14" H

*The outdoor fire bowls and pits can be installed on top of wood decks or patios, 24" clearance to side walls. Allow 7 feet clearance from top of fire bowl or pit to any ceiling.*

#### BOLA STANDARD FEATURES

- Concrete Fire Bowl available in your choice of Textured Charcoal and Smooth Grey
- Lava Rock included

#### FIRE PIT STANDARD FEATURES

- Choose either Natural Gas or Propane Fire Pit. Propane Fire Pit includes 5 FT Hose and Regulator – Propane Tank not included
- Lava Rock included

#### OPTIONAL FEATURES

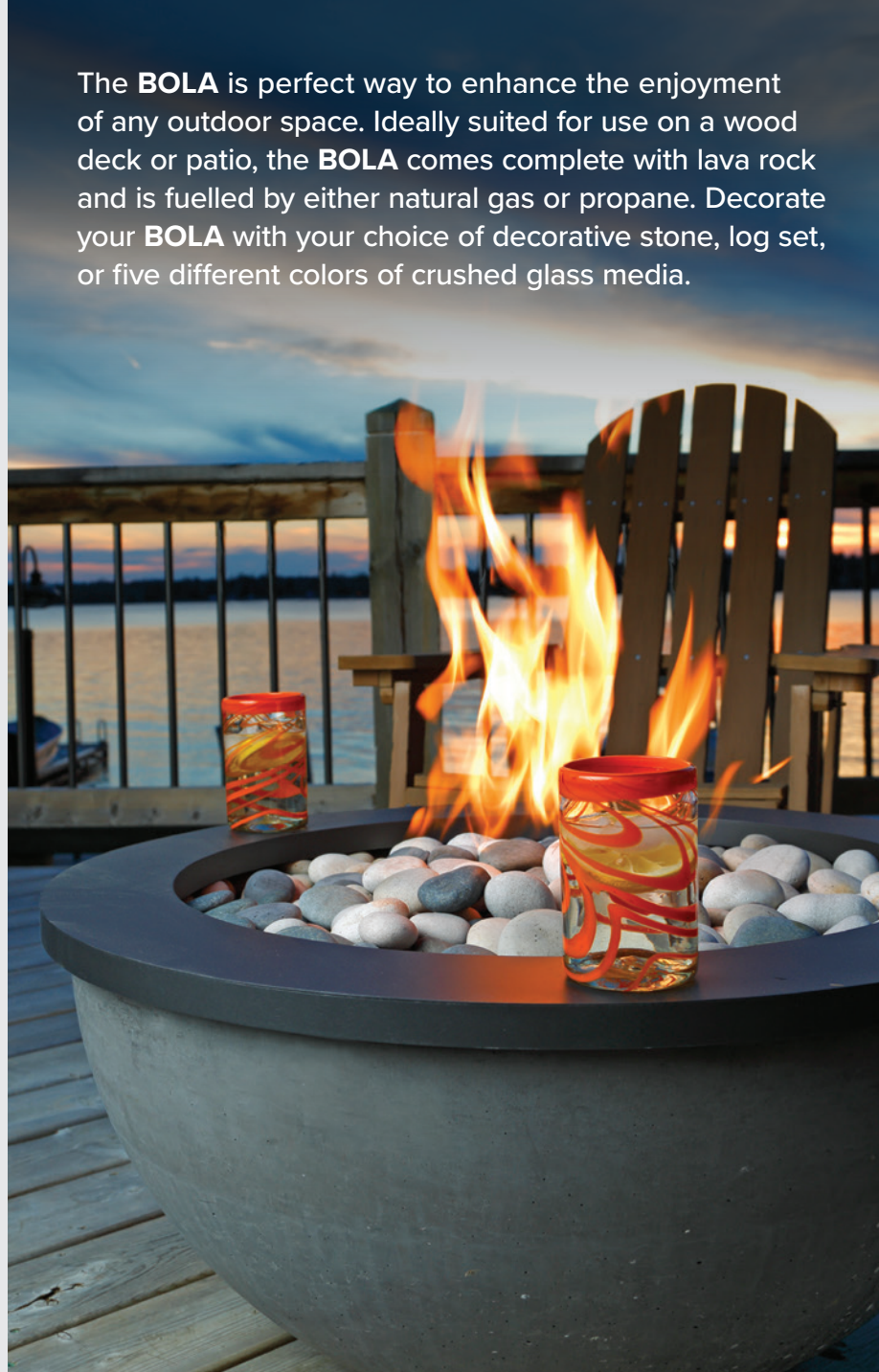
**Media:** Decorative Ember Glass (Glacier Ice, Cobalt Blue, Black, Bronze, White), Decorative Stones

**Log Set:** LOGC85 Oak or LOGC86 Oak

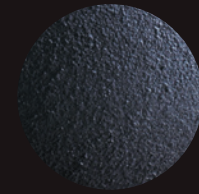
**Bola Trim Ring – Charcoal:**  
FPB32TRG 33 3/4" diameter x 1 3/8" high

**Bola Cover:** Black – FPB30COVB

The **BOLA** is perfect way to enhance the enjoyment of any outdoor space. Ideally suited for use on a wood deck or patio, the **BOLA** comes complete with lava rock and is fuelled by either natural gas or propane. Decorate your **BOLA** with your choice of decorative stone, log set, or five different colors of crushed glass media.



#### COLOURS

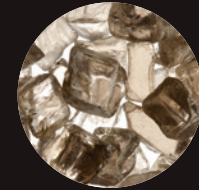


Textured Charcoal

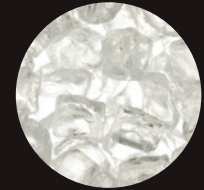


Smooth Grey

#### OPTIONAL ACCESSORIES



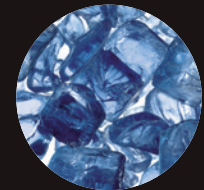
MQG5C Bronze  
Ember Glass



MQG5W White  
Ember Glass



MQG5ZG Zircon  
Glacier Ice Glass



MQG5A Cobalt  
Ember Glass



MQG5B Black  
Ember Glass



MQSTONE  
Decorative Stone



LOGC85 4-Piece  
Oak Log Set



LOGC85 5-Piece  
Oak Log Set





FPB30COVB Optional Bola Cover

Unit Illustrated: FP2085LPT Outdoor Fire Pit – Propane, FPB30TBT – Textured Charcoal Concrete Fire Bowl, MQG5A Cobalt Ember Glass (x4).

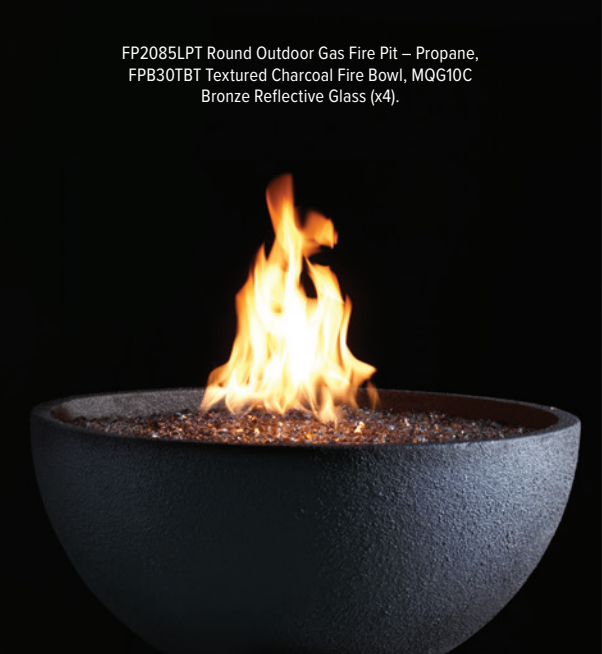
## FP2085 – ROUND OUTDOOR FIRE PIT

Unit Illustrated: FP2085LPT Round Outdoor Gas Fire Pit – Propane, LOGC86 Log Set.



FP2085LPT Round Outdoor Gas Fire Pit – Propane, FPB30TBT Textured Charcoal Fire Bowl, MQG10C Bronze Reflective Glass (x4).

FP2085NT Round Outdoor Gas Fire Pit – Natural Gas, MQSTONES Decorative Stones (x2), FPB30TBT Textured Charcoal Fire Bowl.



OPTIONAL COVER FOR FP2085  
FP20COV Table Top Cover (Conveniently Covers Up Propane Tank When Fire Pit Is In Use).



FP2085NT Round Outdoor Gas Fire Pit – Natural Gas, MQSTONES Decorative Stones.



FP2085NT Round Outdoor Gas Fire Pit – Natural Gas, FP20SSRT Stainless Steel Ring.



# FP2785 – OUTDOOR RECTANGULAR FIRE PIT

**Unit Illustrated:** FP2785LPT-FL  
Rectangular Outdoor Gas  
Fire Pit – Propane,  
LOGC85 Log Set.



FP27COV Optional Fire Pit Cover



LOGC85 4-Piece  
Oak Log Set



LOGC86 5-Piece  
Oak Log Set



MLR1410  
Lava Rock

The outdoor fire pit can be installed on top of wood decks or patios, 24" clearance to side walls. Allow 7 feet clearance from top of fire pit to any ceiling.

<b>Model</b>	FP2785NT*	FP2785LPT-FL
<b>Fuel</b>	Natural	Propane
<b>Input</b>	57,000 BTUH	64,000 BTUH

\*NOT STOCKED – order propane model and convert

## Model Dimensions

FP2785 20" Width x 27" Depth x 9" Height

## FIRE PIT STANDARD FEATURES

- Propane Fire Pit includes 5 FT Hose and Regulator – Propane Tank not included
- Lava Rock
- Flat Cover
- Natural Gas Conversion Orifice



FP2785LPT-FL

## FIRE PIT OPTIONAL FEATURES

**Log Set:** LOGC85 Oak or LOGC86 Oak

**Fire Pit Cover:** Black (for use with Log Set) – FP27COV



Marquis Fireplaces maintains a program of continuous testing, refinement and improvements of all its products. Some aspect of units shown here may be changed at any time without notice or obligation.

Certified for Usa & Canada – ANSI Z21.97-2017 • CSA 2.41-2017  
OUTDOOR DECORATIVE GAS APPLIANCES.

Note: Components may have to be ordered separately to create a complete unit. Discuss with your local Marquis Dealer for clarification.

Crafted entirely in Canada, each Marquis fireplace is built to the highest standards and made to last.

LIMITED LIFETIME WARRANTY



2340 Logan Avenue  
Winnipeg, Manitoba, CAN  
R2R 2V3  
Phone: 204.632.1962  
Fax: 204.632.1960  
[marquisfireplaces.net](http://marquisfireplaces.net)

Printed in Canada  
B074 – 04/2023



**FOR CALIFORNIA RESIDENTS ONLY:**  
**WARNING!** This product can expose you to chemicals including Carbon Monoxide, that is an externally vented by-product of fuel consumption, which is [are] known to the State of California to cause birth defects or other reproductive harm. For more information, visit [www.P65Warnings.ca.gov](http://www.P65Warnings.ca.gov).