

**DO NOT  
DISCARD**

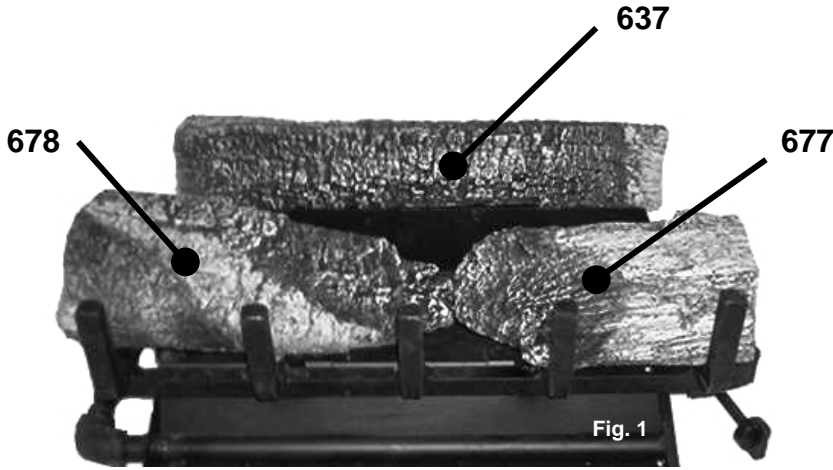
**HEATMASTER®  
18" Log Placement Instructions**

Black Mountain Maple  
Rocky Mountain Maple



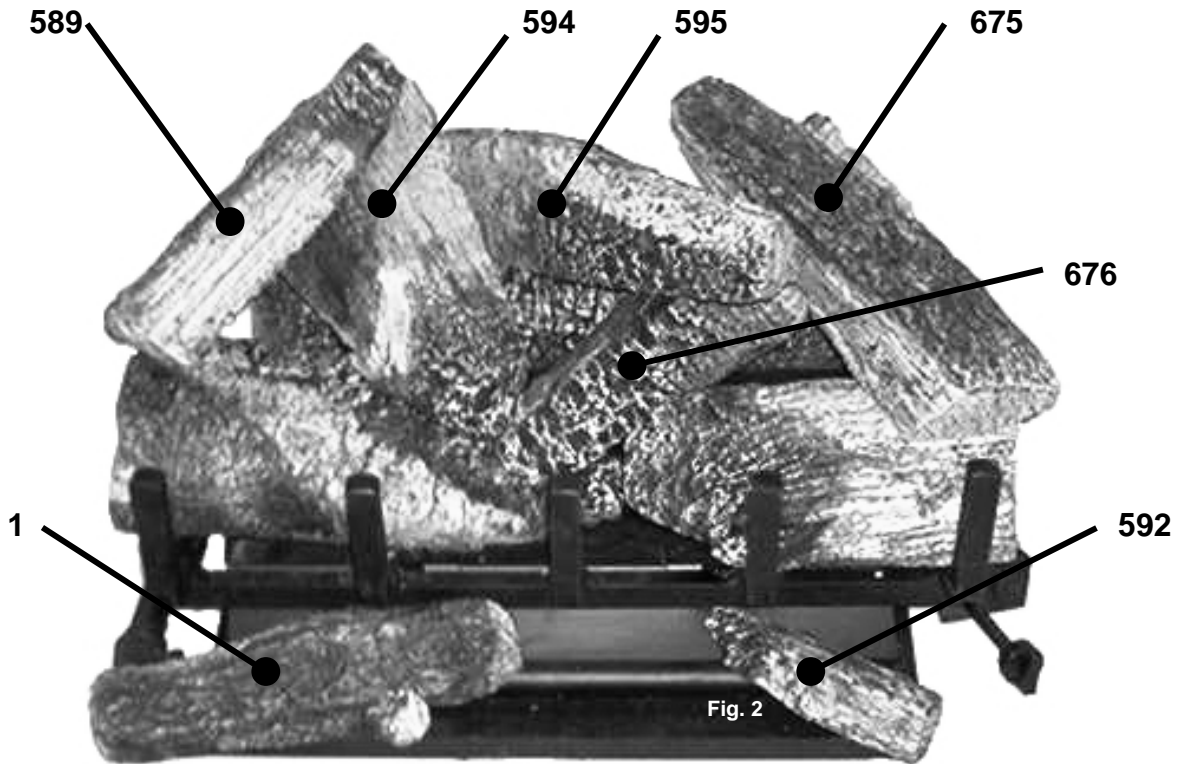
**NOTICE**

Leave these instructions with the manual accompanying the burner system for future reference.



**Follow these steps for proper installation.**

- ◆ Read and understand the Installation and Operating Instruction Manual accompanying the burner system.
- ◆ Place rear log before installing media. (Sand, Vermiculite, Embers etc.)
- ◆ Install media in the pans according to the manual accompanying burner system.
- ◆ Place logs as shown in Figure 1.
- ◆ Place logs as shown in Figure 3.
- ◆ Find the point where the flame passes through the knot hole in log # 1 (Fig. 2).
- ◆ Use the embers to disperse the flame in and around the log.



**WARNING: FAILURE TO POSITION THE PARTS IN ACCORDANCE WITH THESE INSTRUCTIONS OR FAILURE TO USE ONLY PARTS SPECIFICALLY APPROVED WITH THIS APPLIANCE MAY RESULT IN PROPERTY DAMAGE OR PERSONAL INJURY.**

BMM-18 Log Dimensions

678



11 x 4

677



8 x 4

637



16.5 x 3

595



12.75 x 3.25

594



9.5 x 6

675



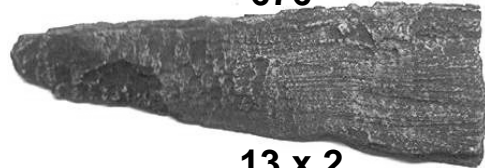
12 x 2

589



9 x 1.5

676



13 x 2

1



9.5 x 1.5

592



5.5 x 1

**DO NOT  
DISCARD**

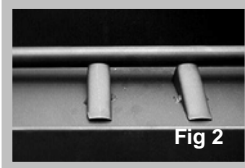
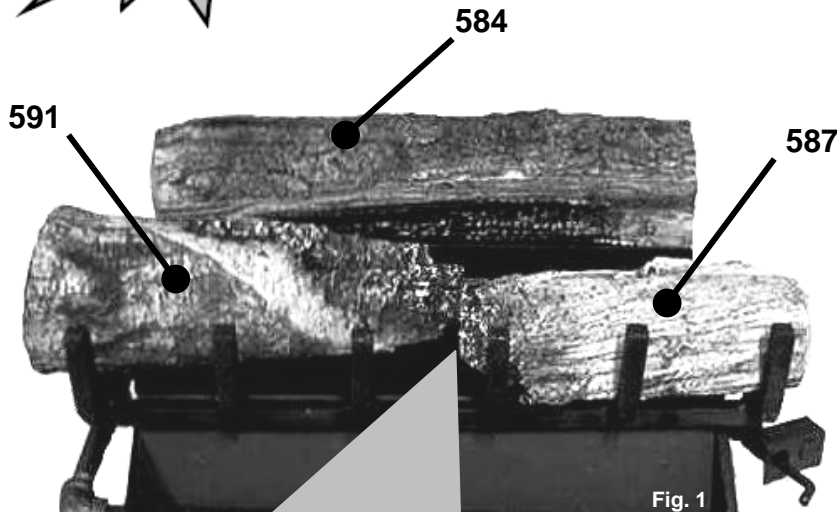
## HEATMASTER® 24" Log Placement Instructions

Black Mountain Maple  
Rocky Mountain Maple



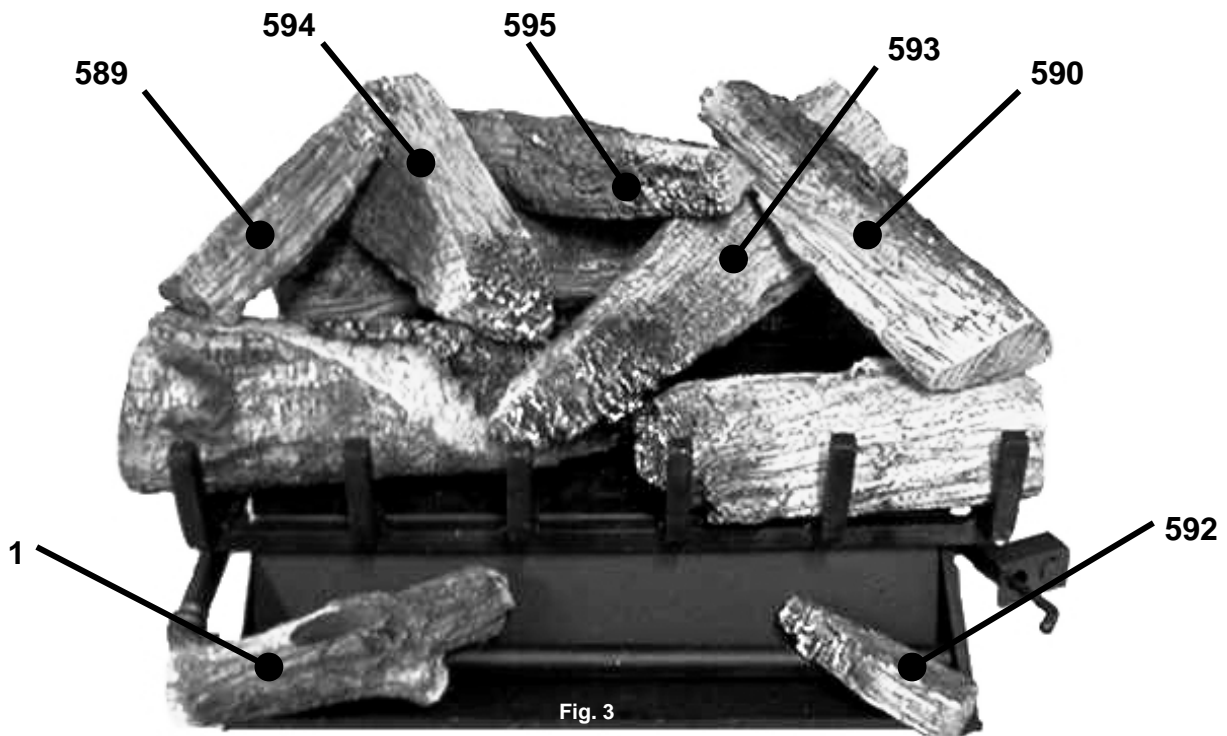
### NOTICE

Leave these instructions with the manual accompanying the burner system for future reference.



### Follow these steps for proper installation.

- ◆ Read and understand the Installation and Operating Instruction Manual accompanying the burner system.
- ◆ Place rear log before installing media. (Sand, Vermiculite, Embers etc.)
- ◆ Install media in the pans according to the manual accompanying burner system.
- ◆ Keep Ember Enhancer tips (Fig. 2) clear of sand (for nat. gas) or Vermiculite (for LP gas).
- ◆ Place logs as shown in Figure 1.
- ◆ Use the rock wool embers to disperse flames coming from the enhancer tips between the front logs.
- ◆ Place logs as shown in Figure 3.
- ◆ Find the point where the flame passes through the knothole in log # 1 (Fig. 3). Use the embers to disperse the flame in and around the log.



**WARNING: FAILURE TO POSITION THE PARTS IN ACCORDANCE WITH THESE INSTRUCTIONS OR FAILURE TO USE ONLY PARTS SPECIFICALLY APPROVED WITH THIS APPLIANCE MAY RESULT IN PROPERTY DAMAGE OR PERSONAL INJURY.**

BMM-24 Log Dimensions

591



13.25 x 4.25

587



11 x 4.25

584



20 x 5

595



12.75 x 3.25

593



13.5 x 4

594



9.5 x 6

590



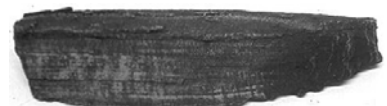
12.25 x 2.75

1



9.5 x 1.5

589



9 x 1.5

592



5.5 x 1

**DO NOT  
DISCARD**

## HEATMASTER® 30" Log Placement Instructions

Black Mountain Maple  
Rocky Mountain Maple



### NOTICE

Leave these instructions with the manual accompanying the burner system for future reference.

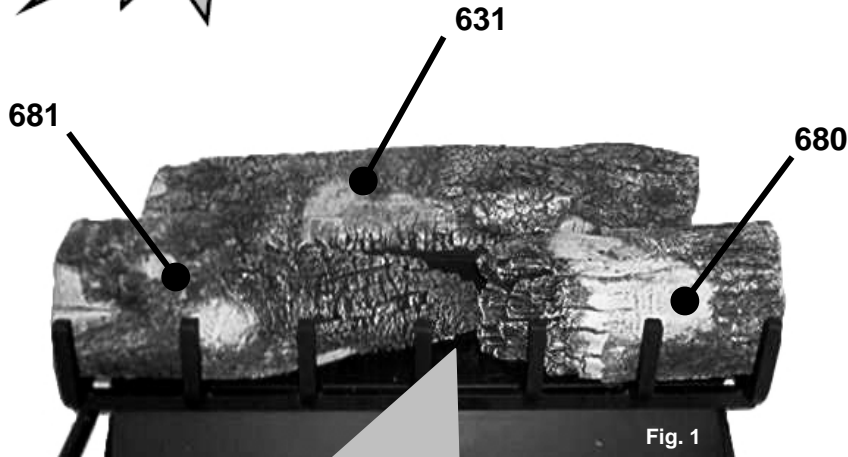


Fig. 1

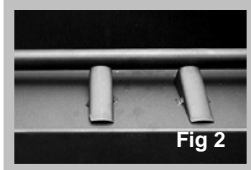


Fig 2

### Follow these steps for proper installation.

- ◆ Read and understand the Installation and Operating Instruction Manual accompanying the burner system.
- ◆ Place rear log before installing media. (Sand, Vermiculite, Embers etc.)
- ◆ Install media in the pans according to the manual accompanying burner system.
- ◆ Keep Ember Enhancer tips (Fig. 2) clear of sand (for nat. gas) or Vermiculite (for LP gas).
- ◆ Place logs as shown in Figure 1.
- ◆ Use the rock wool embers to disperse flames coming from the enhancer tips between the front logs.
- ◆ Place logs as shown in Figure 3.
- ◆ Find the point where the flame passes through the knothole in log # 1 (Fig. 3). Use the embers to disperse the flame in and around the log.

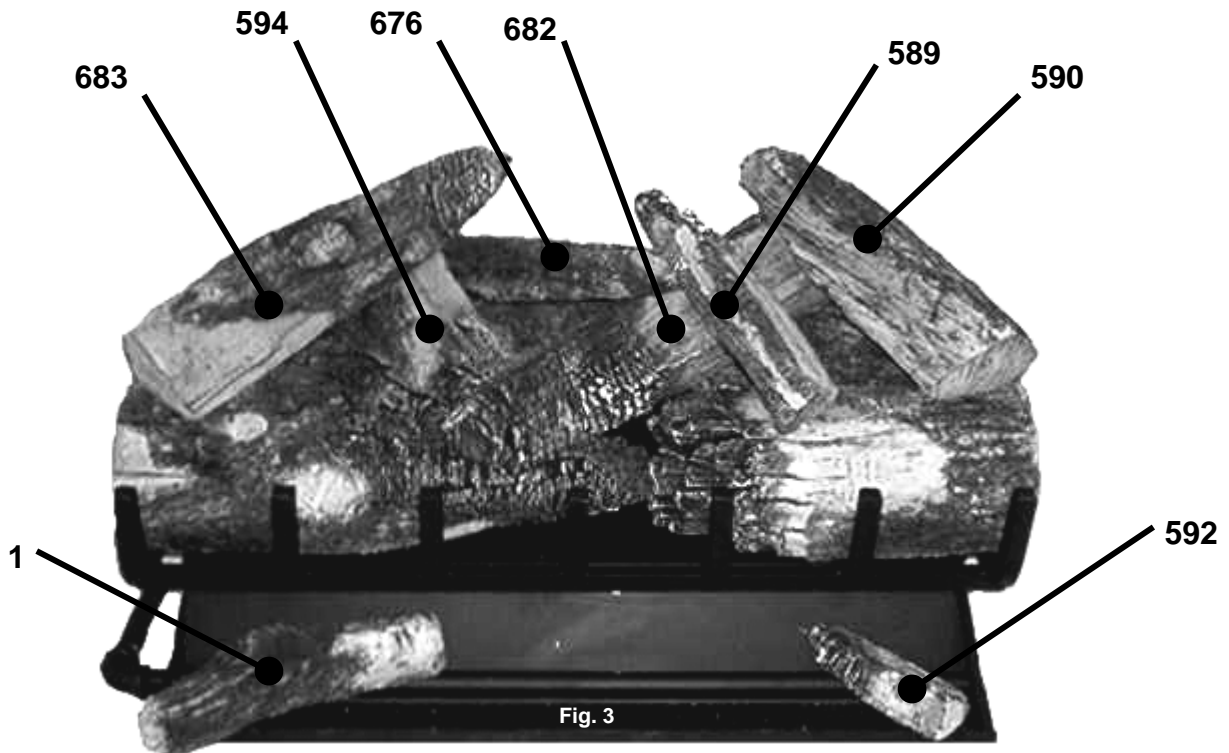
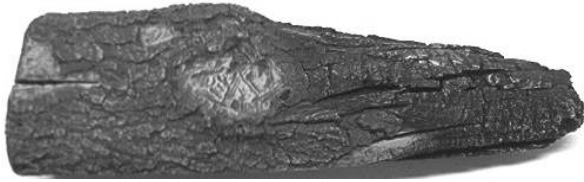


Fig. 3

**WARNING: FAILURE TO POSITION THE PARTS IN ACCORDANCE WITH THESE INSTRUCTIONS OR FAILURE TO USE ONLY PARTS SPECIFICALLY APPROVED WITH THIS APPLIANCE MAY RESULT IN PROPERTY DAMAGE OR PERSONAL INJURY.**

# BMM-30 Log Dimensions

681



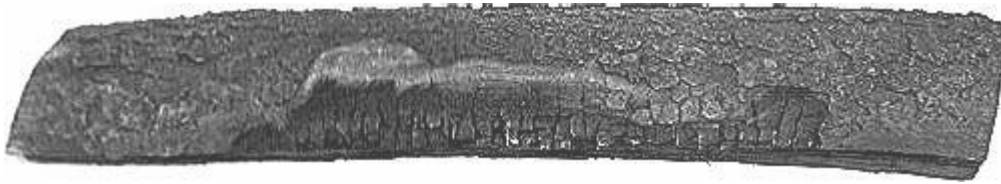
18 x 5

680



13 x 6

631



26.5 x 6

683



16 x 3.5

682



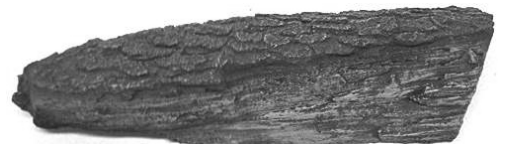
20 x 3.5

594



10 x 3.5

590



12.25 x 2.75

676



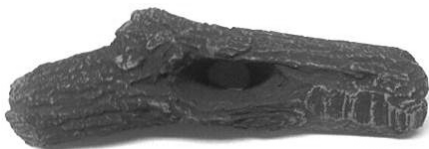
13 x 2

589



9 x 1.5

1



9.5 x 1.5

592



5.5 x 1