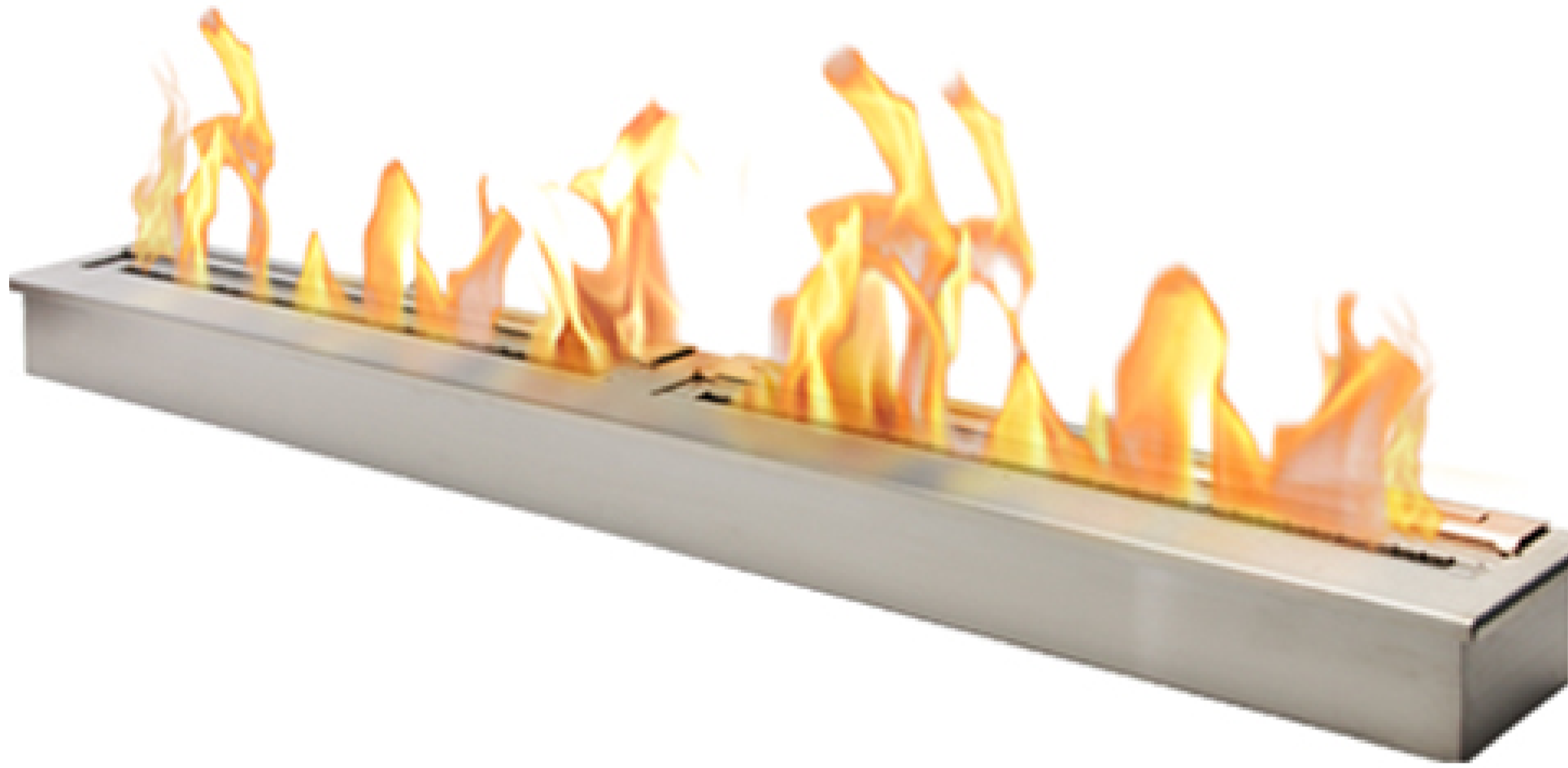


# Burner Collection

## 72" Burner



**Black**



### Included Accessories



**Lighting Rod**

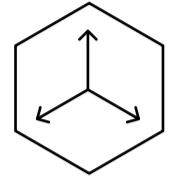
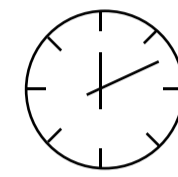
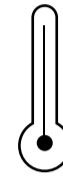
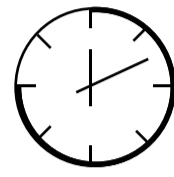
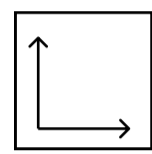
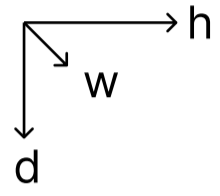


**Lighter**



**Funnel**

# Burner Collection 72" Burner



| Dimensions<br>H x W x D mm/in        | Fuel<br>Capacity | Heats on Average<br>(indoors)                      | Fuel<br>Consumption | Thermal Output<br>Net (MAX) | Approx.<br>Burn Time | Minimum Room<br>Size (per burner) |
|--------------------------------------|------------------|--|---------------------|-----------------------------|----------------------|-----------------------------------|
| 115 x 1829 x 193<br>4.5 x 72.0 x 7.6 | 18L              | Over 169m <sup>2</sup><br>[1,819 ft <sup>2</sup> ] | 1.09L per hour      | 47,400BTU/h<br>13.9 Kw      | 10-12 hours          | 400 sq. ft.                       |

## Awards

2010 Winner Outdoor Hearth Products  
Vesta Awards

## Application

Indoor & Outdoor

## Burner Colour

Stainless Steel
  Black

## Materials

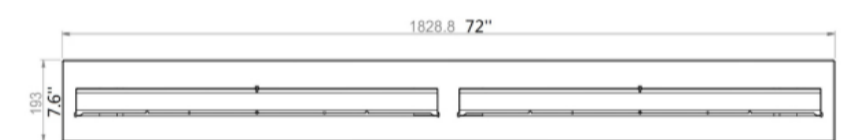
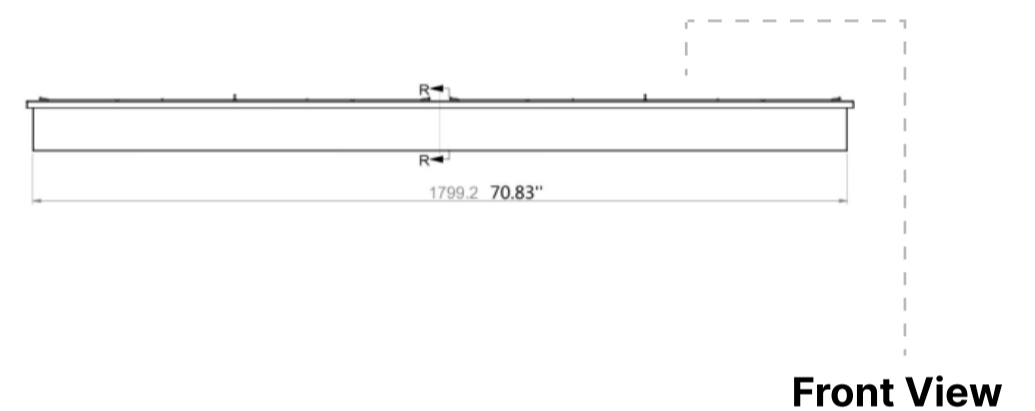
Grade 304 Stainless Steel Construction

## Approx. Weight

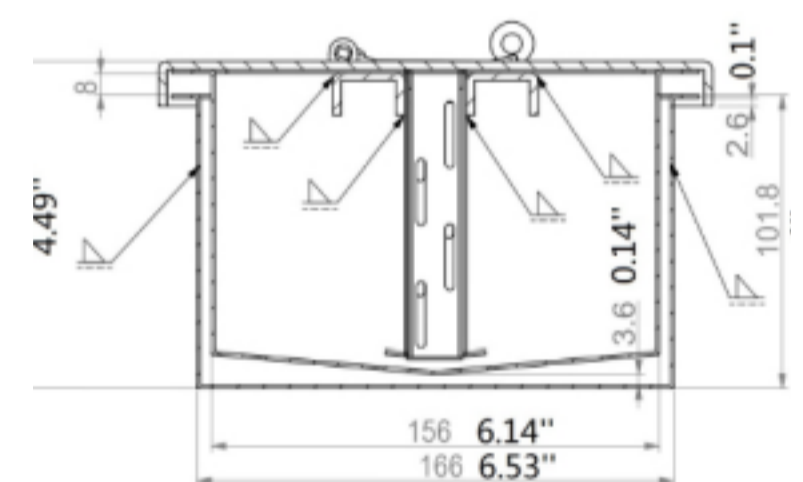
66 lbs

## Fuel Type

Bio Ethanol Fuel



Top View



Side View

### Inserting within a firebox setting:

The Bio Flame 72" BURNER can only be fitted into a non-combustible firebox that has minimum clearances of 80"W x 20"H x 15"D.

### Custom made fireboxes must:

- Be made out of a non-combustible material such as stainless steel
- \*When recessing the tray into a non-combustible base with no firebox, the overhead clearance required is 60"MIN. to the nearest combustible\*



Global Compliance  
All burners are UL Listed in accordance with ANSI/UL1370 in the USA and comply with the ACCC Safety Mandate for Australia.



Lifetime Warranty

FOR MORE INFORMATION PLEASE REFERENCE THE CLEARANCE & INSTALLATION MANUAL

\*Dimensions may vary by 2% (plus or minus) due to material attributes. Template not provided. The Bio Flame recommends using the actual fireplace or burner model when making final cut out

