

# Burner Collection

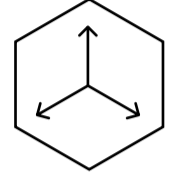
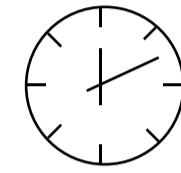
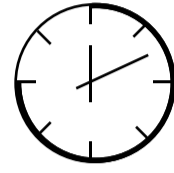
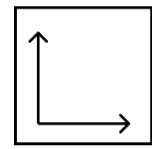
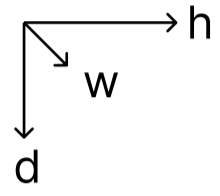
## 13" Round Burner



### Included Accessories



# Burner Collection 13" Round Burner



Dimensions H x W x D mm/in	Fuel Capacity	Heats on Average (indoors)	Fuel Consumption	Thermal Output Net (MAX)	Approx. Burn Time	Minimum Room Size (per burner)
117 x 330 x 330 4.6 x 13.0 x 13.0	5.0L	Over 98m <sup>2</sup> [1,054 ft <sup>2</sup> ]	0.3L per hour	29,000 BTU/h 8.5 Kw	6-8 hours	150 sq. ft.

## Awards

2010 Winner Outdoor Hearth Products  
Vesta Awards

## Application

Indoor & Outdoor

## Burner Colour

 Stainless Steel

## Materials

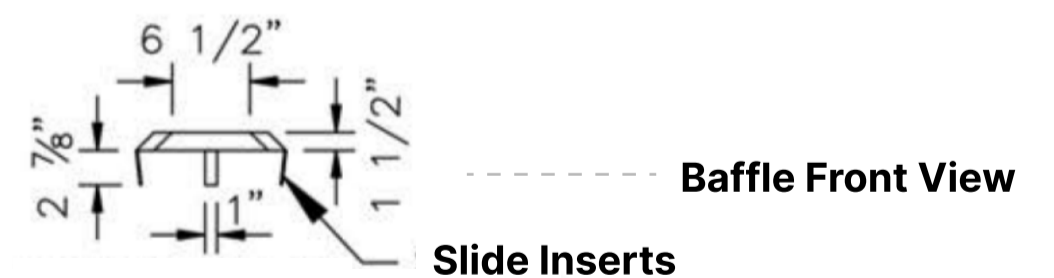
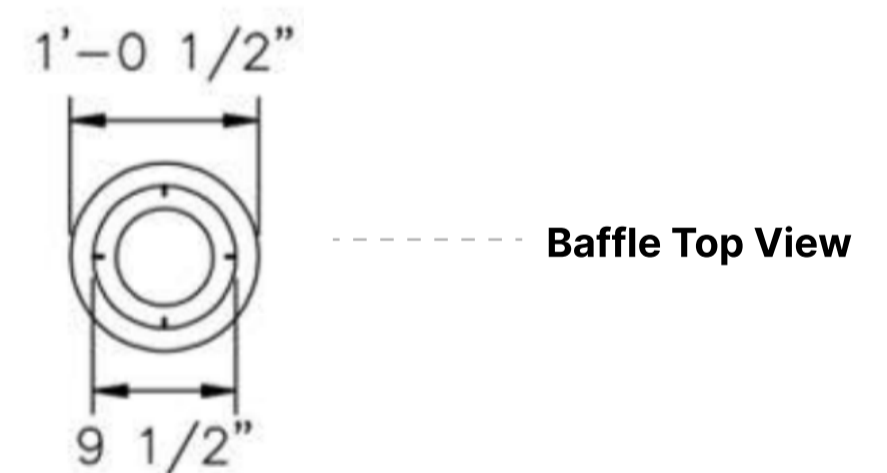
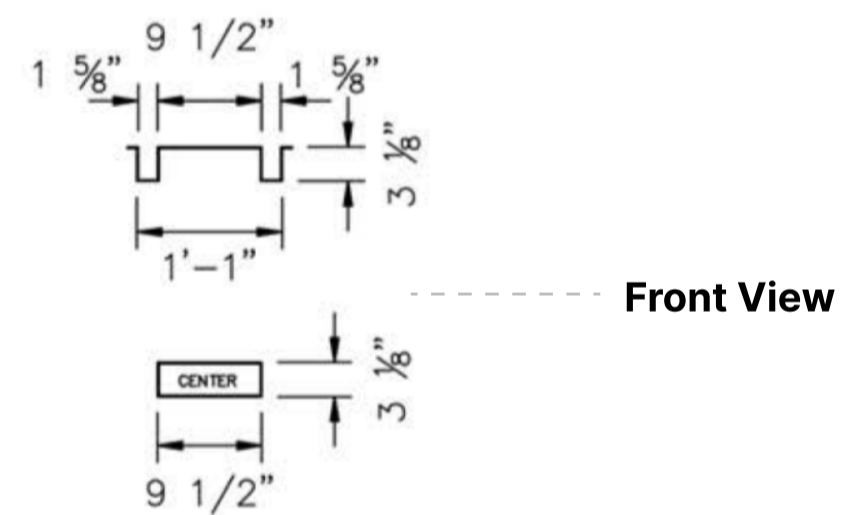
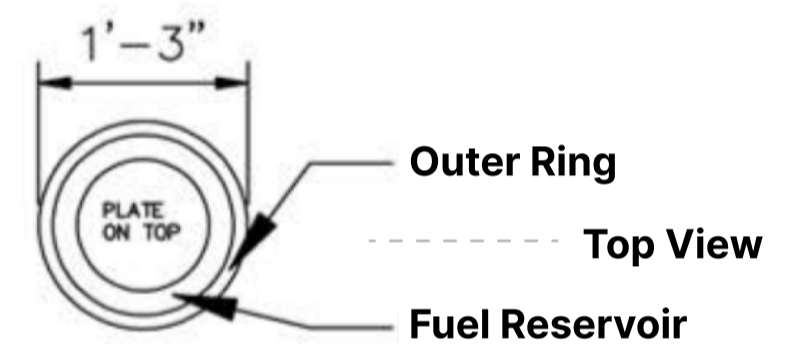
Grade 304 Stainless Steel Construction

## Approx. Weight

7 lbs

## Fuel Type

Bio Ethanol Fuel



### Inserting within a firebox setting:

The Bio Flame 13" BURNER can only be fitted into a non-combustible firebox that has minimum clearances of around 4.0" (102mm) Top 24" (610mm).

### Custom made fireboxes must:

- Be made out of a non-combustible material such as stainless steel
- \*When recessing the tray into a non-combustible base with no firebox, the overhead clearance required is 60"MIN. to the nearest combustible\*



Global Compliance  
All burners are UL Listed in accordance with ANSI/UL1370 in the USA and comply with the ACCC Safety Mandate for Australia.



Lifetime Warranty

FOR MORE INFORMATION PLEASE REFERENCE THE CLEARANCE & INSTALLATION MANUAL

\*Dimensions may vary by 2% (plus or minus) due to material attributes. Template not provided. The Bio Flame recommends using the actual fireplace or burner model when making final cut out

