

2022

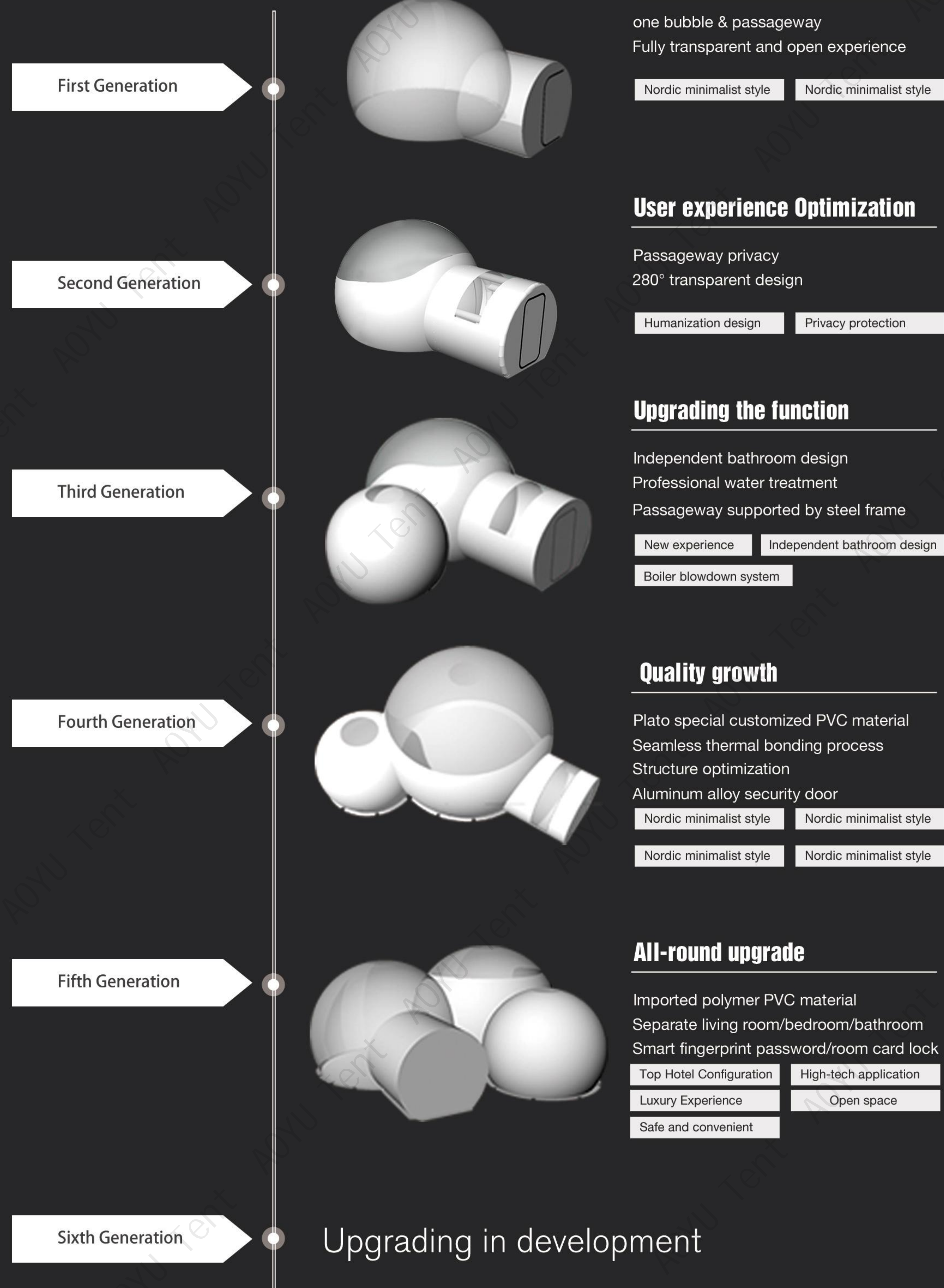
**BUBBLE HOUSE
BROCHURE**

CONTENTS

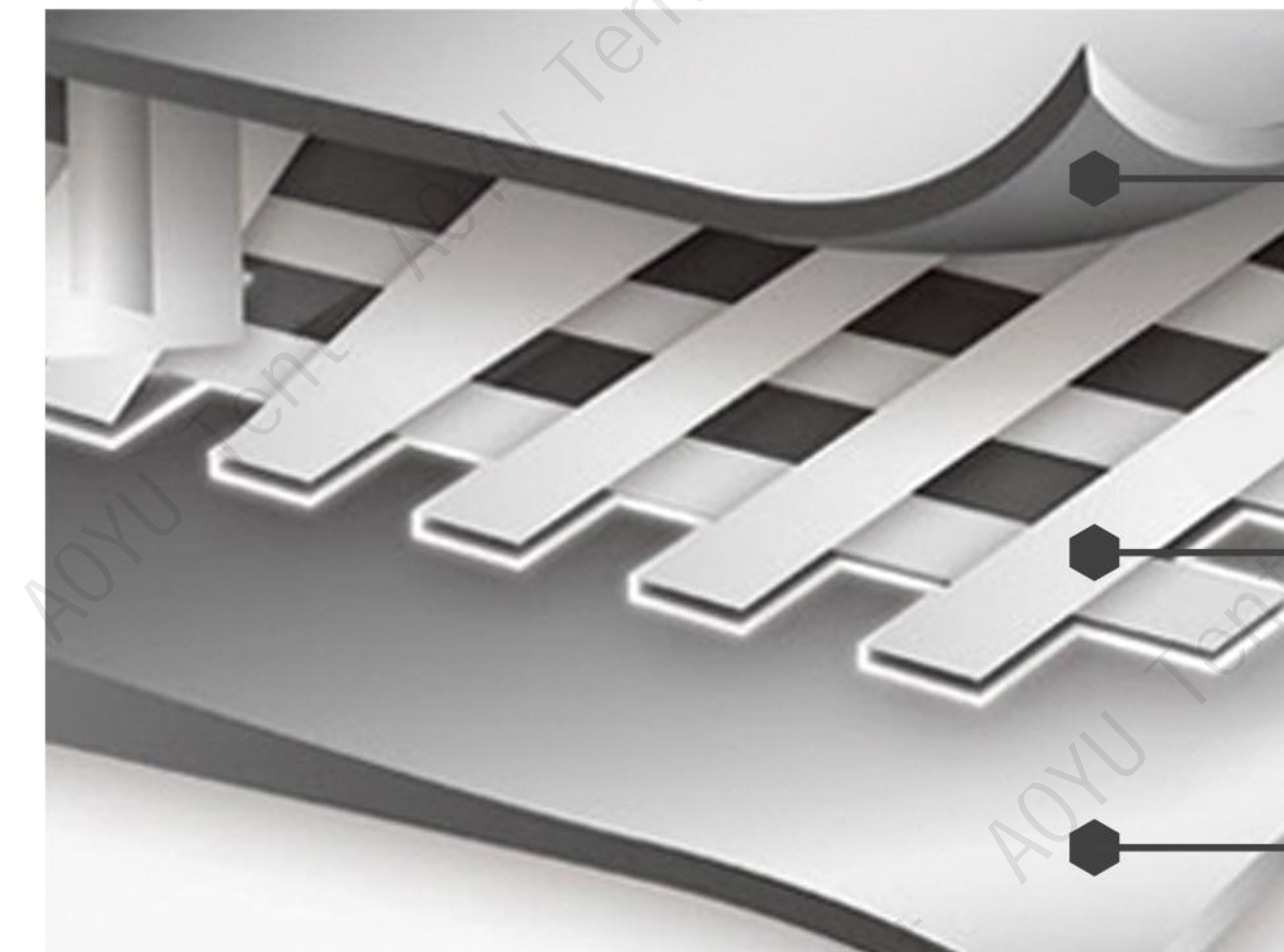
Company Profile	1
Bubble House Development	3
Bubble tent material analysis	4
The Bubble House design concept	5
Investment prospects for Bubble House	6
Bubble House Accommodation Experience	7
Design Principles Explained	8
Applications Scenarios	9
Bubble House Details	10
Investment advantages	11
Functions Advantages	12
Bubble House Dimensions	13-19
More styles	20
Bubble House Accessories	21
Optional soft furnishings	22
Bubble House Case	23-26
Patent Certificate	27-28
Product installation and precautions	29
Questions you may have	30

AOYU

BUBBLE HOUSE DEVELOPMENT



Bubble tent material analysis



- Adhesive PVC tape
- Polyester mesh fabric
- Adhesive PVC tape

1

Embossing process is wear-resistant

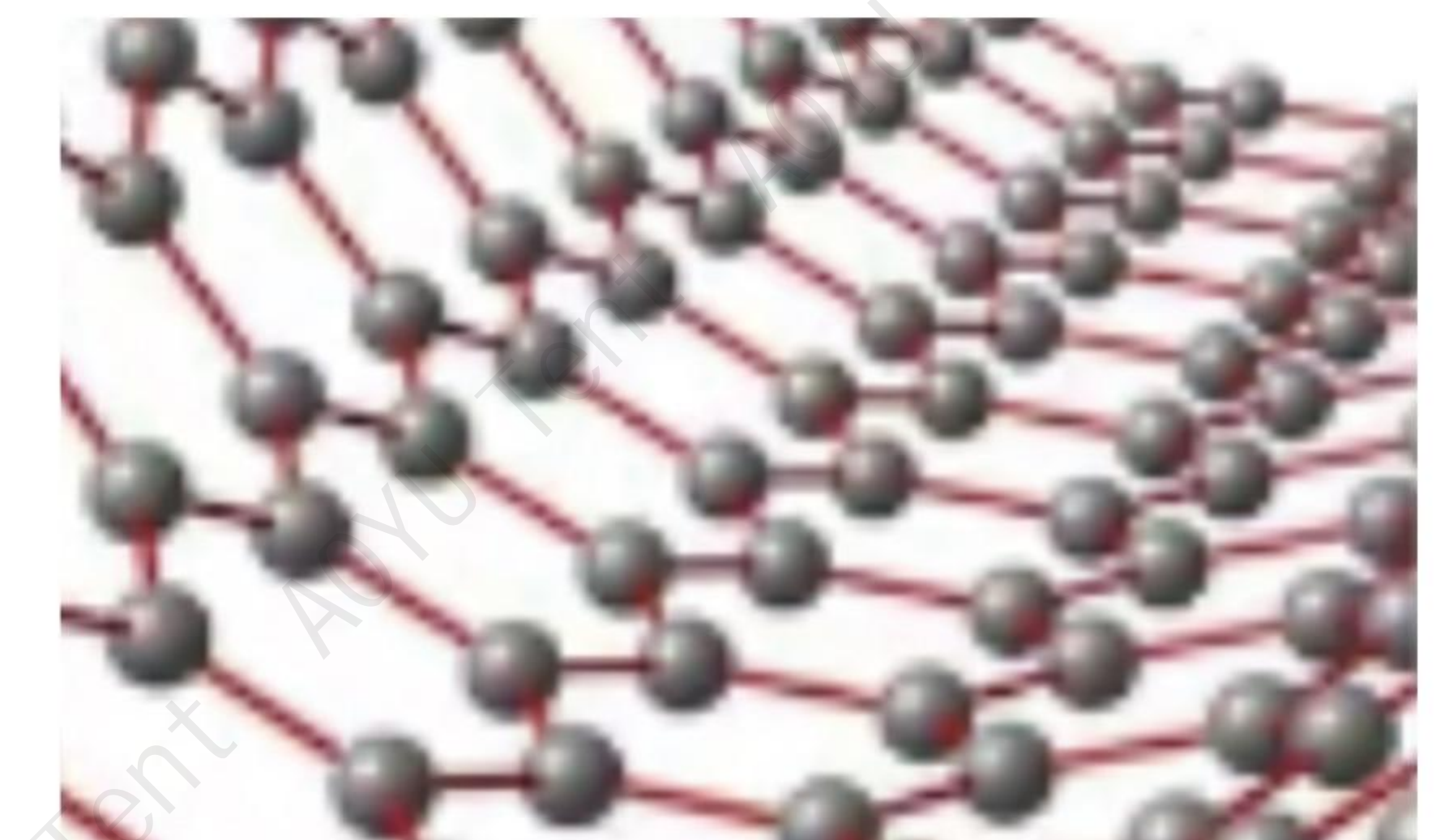
Adopt advanced embossing technology, improve product quality, enhance wear resistance, prolong service life



2

Interlayer braided fiber

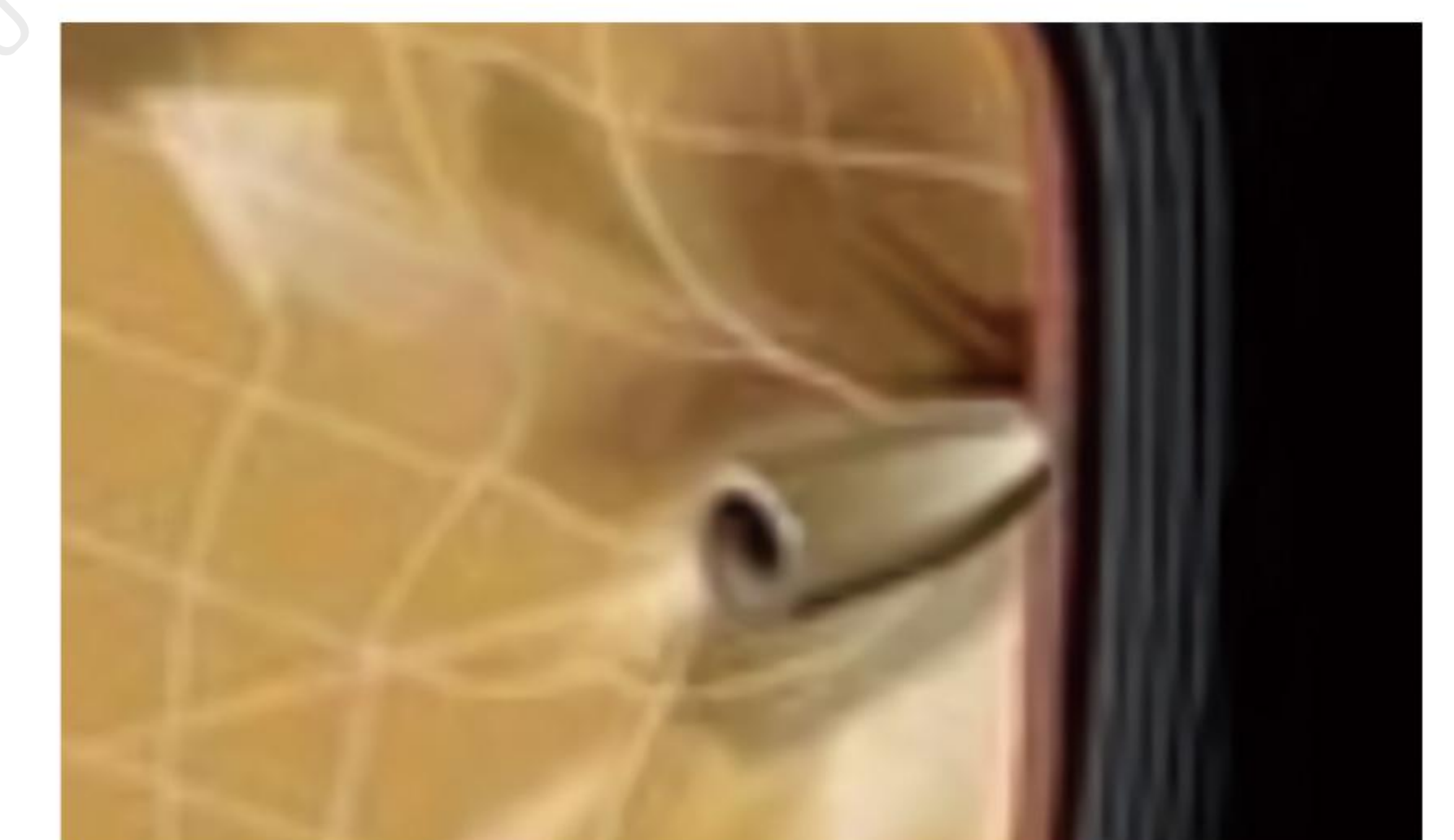
Use interlayer braided fiber to make it thicker and improve product quality



3

Adhesive PVC tape

Quality pvc tape, guaranteed performance, scratch resistance



DESIGN CONCEPT

The bubble house adopts the design concept of close to nature, its novel appearance design, simple and transparent structure

It brings people in zero distance contact with nature, brings romantic and comfortable accommodation experience, and has natural advantages of B&B investment.

It has natural advantages for B&B investment. The bubble house was cited as a leisure accommodation in foreign countries in the early days, and now it has spread all over Europe and America.

Only some of the cases have become popular B&B spots, from the market point of view

Bubble house investment B&B prospects, choose bubble house can easily build a hot B&B!



INVESTMENT PROSPECTS

Unlike ordinary camping tents, canopies can be set up quickly and flexibly for different types of sites, and are safe and reliable.

1



Aesthetics

2



Stability

3



Security

4



Durability

5






Convenience

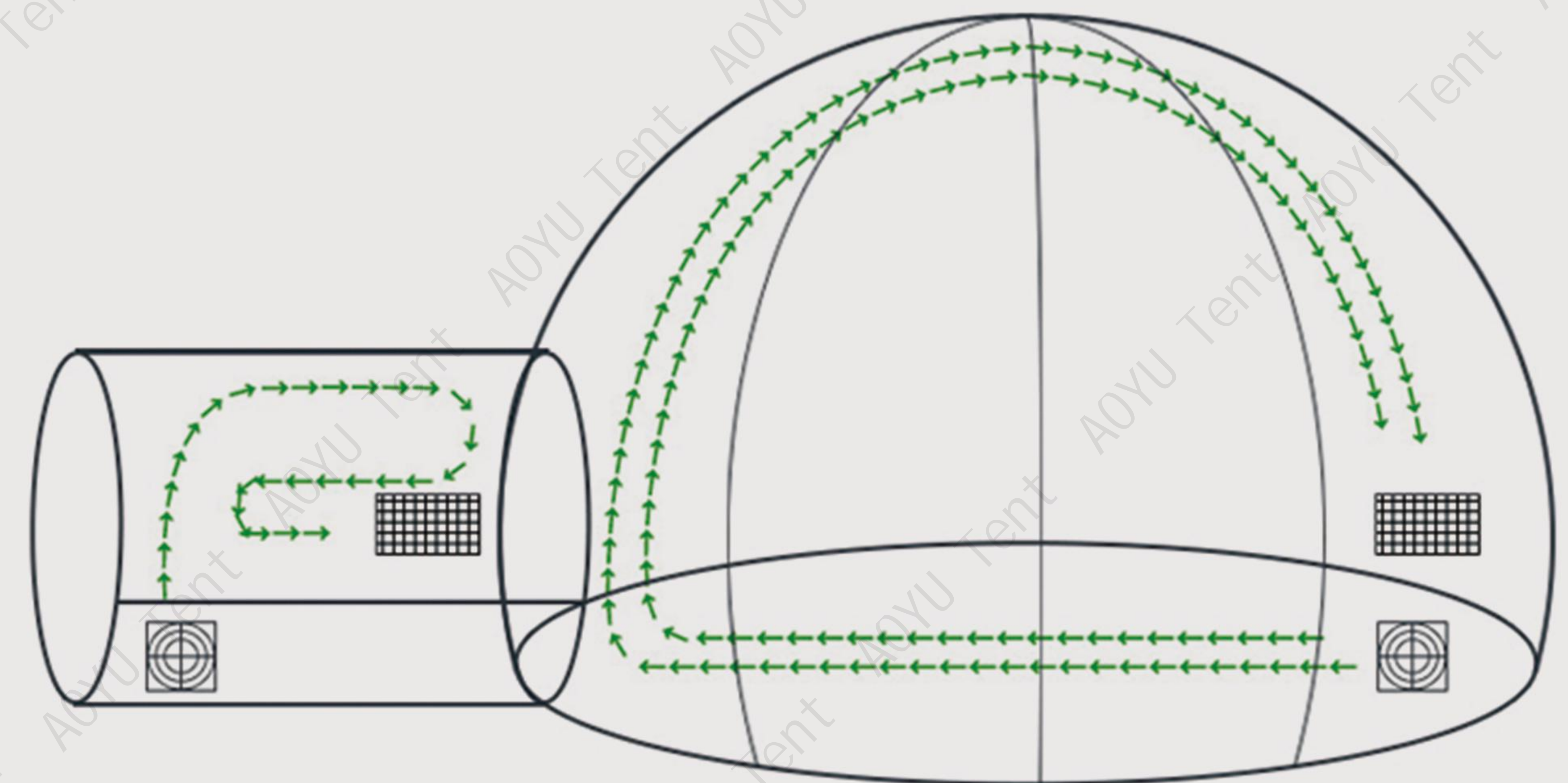
BUBBLE HOUSE ACCOMMODATION EXPERIENCE

In the natural environment, whether it is the jungle wilderness, mountains, rivers, river and lake, the very special bubble house can be easily integrated.

DESIGN PRINCIPLES EXPLAINED

The bubble house adopts structural mechanics, engineering and combined with ecological principles of design, the use of low-energy environmentally friendly materials to build, after heat treatment technology for welding combination to form, inside and outside with two-way air port, the use of fresh air system for internal and external air circulation, to ensure air flow, continuous oxygen supply. Its frame structure is the use of gas pressure characteristics of the air bag expansion to form a certain rigidity of the air wall, reasonable air chamber settings and the use of high strength, high performance materials to ensure that the bubble house load-bearing and service life.

-  Air outlet hole
-  Blower (air inlet)
-  Air circulation



APPLICATIONS SCENARIOS

Scenic Area



Hill House

Resort



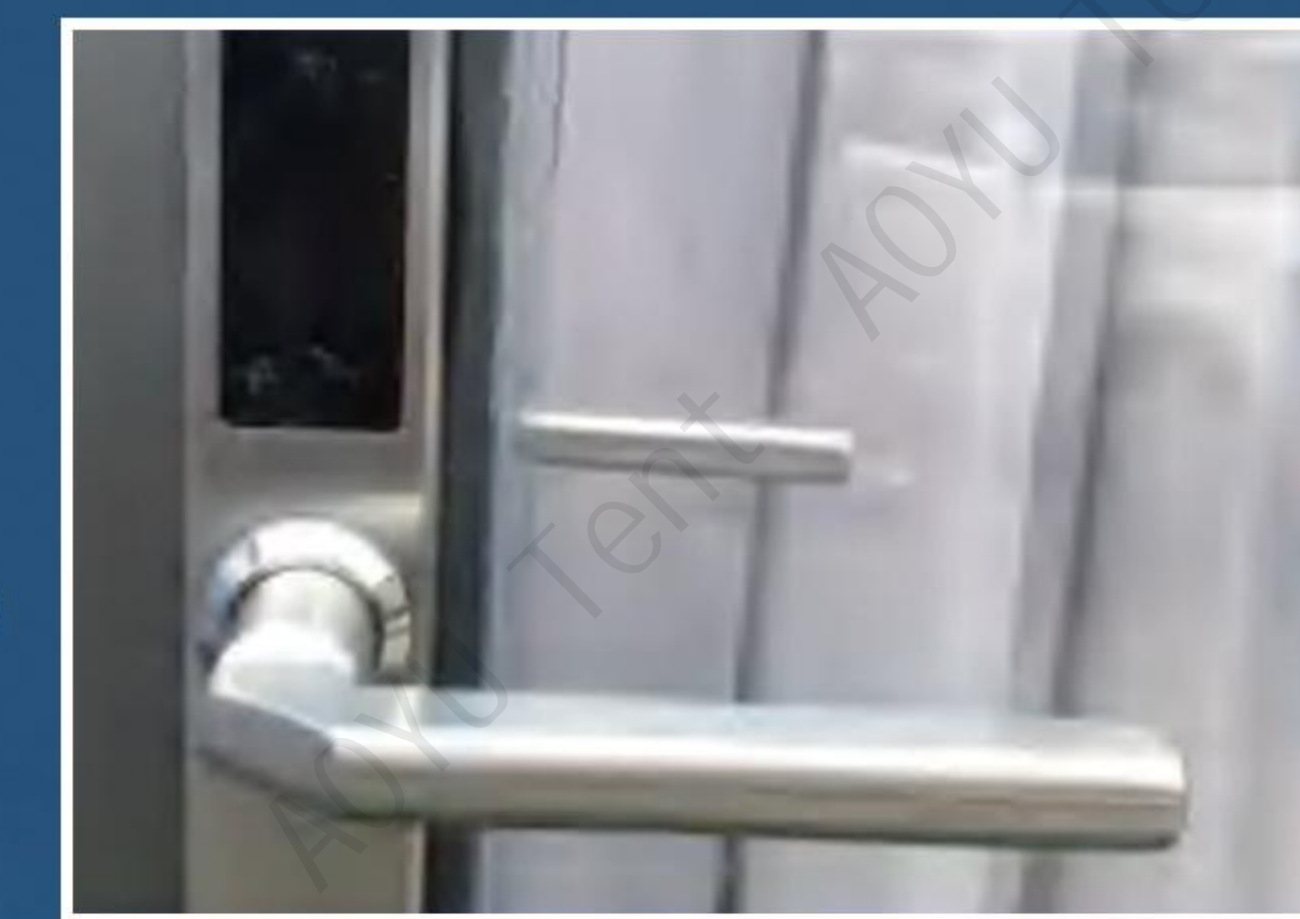
Manor

Camp



Events

Star hotel tents are suitable for catering, grass, mountains, deserts, snowy mountains and other types of venues. Depending on the site factors and local customs and folklore customers can choose different configurations of decoration to create star hotel tents with folklore characteristics.



Screw-in fixing
Easy and fast installation



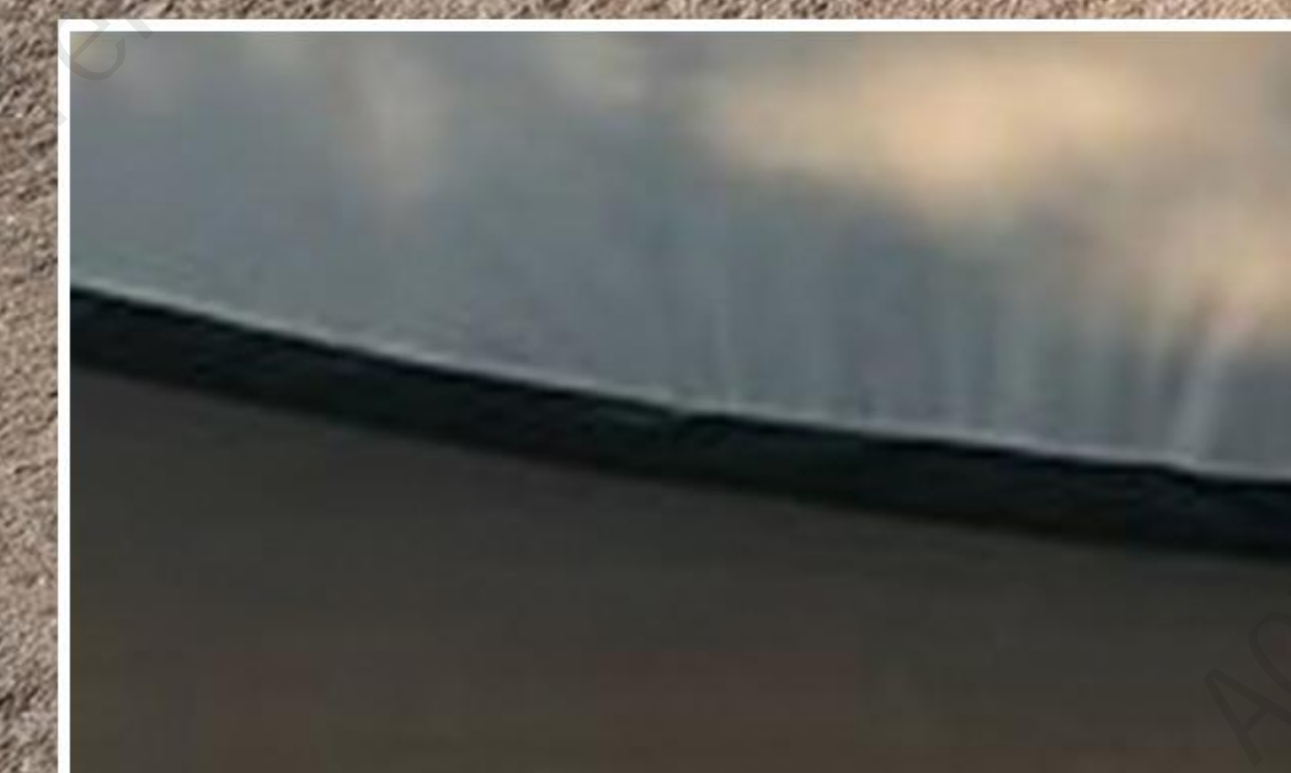
Channel steel frame



Transparent pvc



Opaque pvc



Base



INVESTMENT ADVANTAGES



Applicable locations
Wide range



Small investment
No risk



No fixed size



Short construction
period



Flexibility in site selection



Freedom to build themes



Environmentally friendly
Recyclable



Easy to move and dismantle

FUNCTIONS ADVANTAGES



Rainproof



Wind resistant



UV resistant



Cold resistance



High temperature
resistant



Fire retardant



Thermal insulation



Anti-aging



Inflatable Bubble House - One Room



3.5m Bubble House

Bedroom Floor Area (m ²)	9.6
Bedroom Floor Diameter(m)	Φ3.5
Bedroom Height(m)	3
Hallway (L)	2
Hallway (W)	1.5
Hallway (H)	2.2

Inflatable Bubble House - One Room



5m Bubble House

Bedroom Floor Area (m ²)	19.6
Bedroom Floor Diameter(m)	Φ5
Bedroom Height(m)	3.75
Hallway (L)	2
Hallway (W)	1.5
Hallway (H)	2.2



4m Bubble House

Bedroom Floor Area (m ²)	12.56
Bedroom Floor Diameter(m)	Φ4
Bedroom Height(m)	3.2
Hallway (L)	2
Hallway (W)	1.5
Hallway (H)	2.2



5.5m Bubble House

Bedroom Floor Area (m ²)	23.7
Bedroom Floor Diameter(m)	Φ5.5
Bedroom Height(m)	4.1
Hallway (L)	2
Hallway (W)	1.5
Hallway (H)	2.2



4.5m Bubble House

Bedroom Floor Area (m ²)	15.9
Bedroom Floor Diameter(m)	Φ4.5
Bedroom Height(m)	3.4
Hallway (L)	2
Hallway (W)	1.5
Hallway (H)	2.2

Inflatable Bubble House - Two Rooms



3.5*2.5m Bubble House

Bedroom Floor Area (m ²)	9.6
Bedroom Floor Diameter(m)	Φ3.5
Bedroom Height(m)	3
Bathroom Floor Area (m ²)	5
Bathroom Floor Diameter (m)	Φ2.5
Bathroom Height (m)	2
Hallway (L)	2
Hallway (W)	1.5
Hallway (H)	2.2



3.5*3m Bubble House

Bedroom Floor Area (m ²)	9.6
Bedroom Floor Diameter(m)	Φ3.5
Bedroom Height(m)	3
Bathroom Floor Area (m ²)	7
Bathroom Floor Diameter (m)	Φ3
Bathroom Height (m)	2.3
Hallway (L)	2
Hallway (W)	1.5
Hallway (H)	2.2



4.5*2.5m Bubble House

Bedroom Floor Area (m ²)	15.9
Bedroom Floor Diameter(m)	Φ4.5
Bedroom Height(m)	3.4
Bathroom Floor Area (m ²)	5
Bathroom Floor Diameter (m)	Φ2.5
Bathroom Height (m)	2
Hallway (L)	2
Hallway (W)	1.5
Hallway (H)	2.2

Inflatable Bubble House - Two Rooms



4.5*3m Bubble House

Bedroom Floor Area (m ²)	15.9
Bedroom Floor Diameter(m)	Φ4.5
Bedroom Height(m)	3.4
Bathroom Floor Area (m ²)	7
Bathroom Floor Diameter (m)	Φ3
Bathroom Height (m)	2.3
Hallway (L)	2
Hallway (W)	1.5
Hallway (H)	2.2



5*3m Bubble House

Bedroom Floor Area (m ²)	19.6
Bedroom Floor Diameter(m)	Φ5
Bedroom Height(m)	3.75
Bathroom Floor Area (m ²)	7
Bathroom Floor Diameter (m)	Φ2.5
Bathroom Height (m)	2.3
Hallway (L)	2
Hallway (W)	1.5
Hallway (H)	2.2

Inflatable Bubble House - Three Rooms



4.5*3*4m Bubble House

Bedroom Floor Area (m ²)	15.8
Bedroom Floor Diameter(m)	Φ4.5
Bedroom Height(m)	3.4
Bathroom Floor Area (m ²)	7
Bathroom Floor Diameter (m)	Φ3
Bathroom Height (m)	2.3
Livingroom Floor Area(m ²)	12.5
LivingroomFloor Diameter(m)	Φ4
Livingroom Height (m)	3.2
Hallway (L)	2
Hallway (W)	1.5
Hallway (H)	2.2



5*3.5*4.5m Bubble House

Bedroom Floor Area (m ²)	19.6
Bedroom Floor Diameter(m)	Φ5
Bedroom Height(m)	3.75
Bathroom Floor Area (m ²)	9.6
Bathroom Floor Diameter (m)	Φ3.5
Bathroom Height (m)	3
Livingroom Floor Area(m ²)	15.9
LivingroomFloor Diameter(m)	Φ4.5
Livingroom Height (m)	3.4
Hallway (L)	2
Hallway (W)	1.5
Hallway (H)	2.2

Inflatable Bubble House - One Room-Air



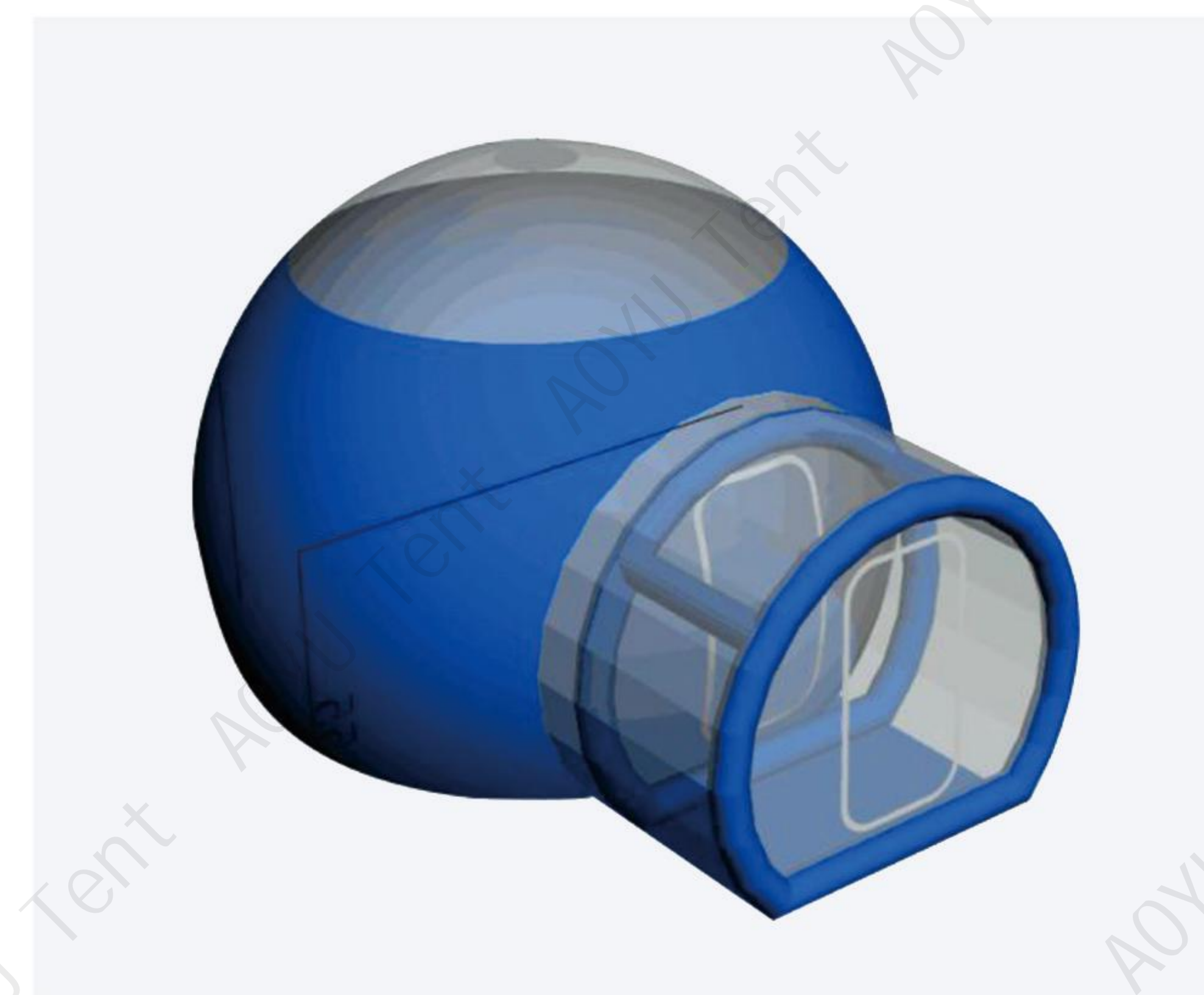
3.5m Bubble House

Bedroom Floor Area (m ²)	9.6
Bedroom Floor Diameter(m)	Φ3
Bedroom Height(m)	2.5
Hallway (L)	1.5
Hallway (W)	1.5
Hallway (H)	2.2



4m Bubble House

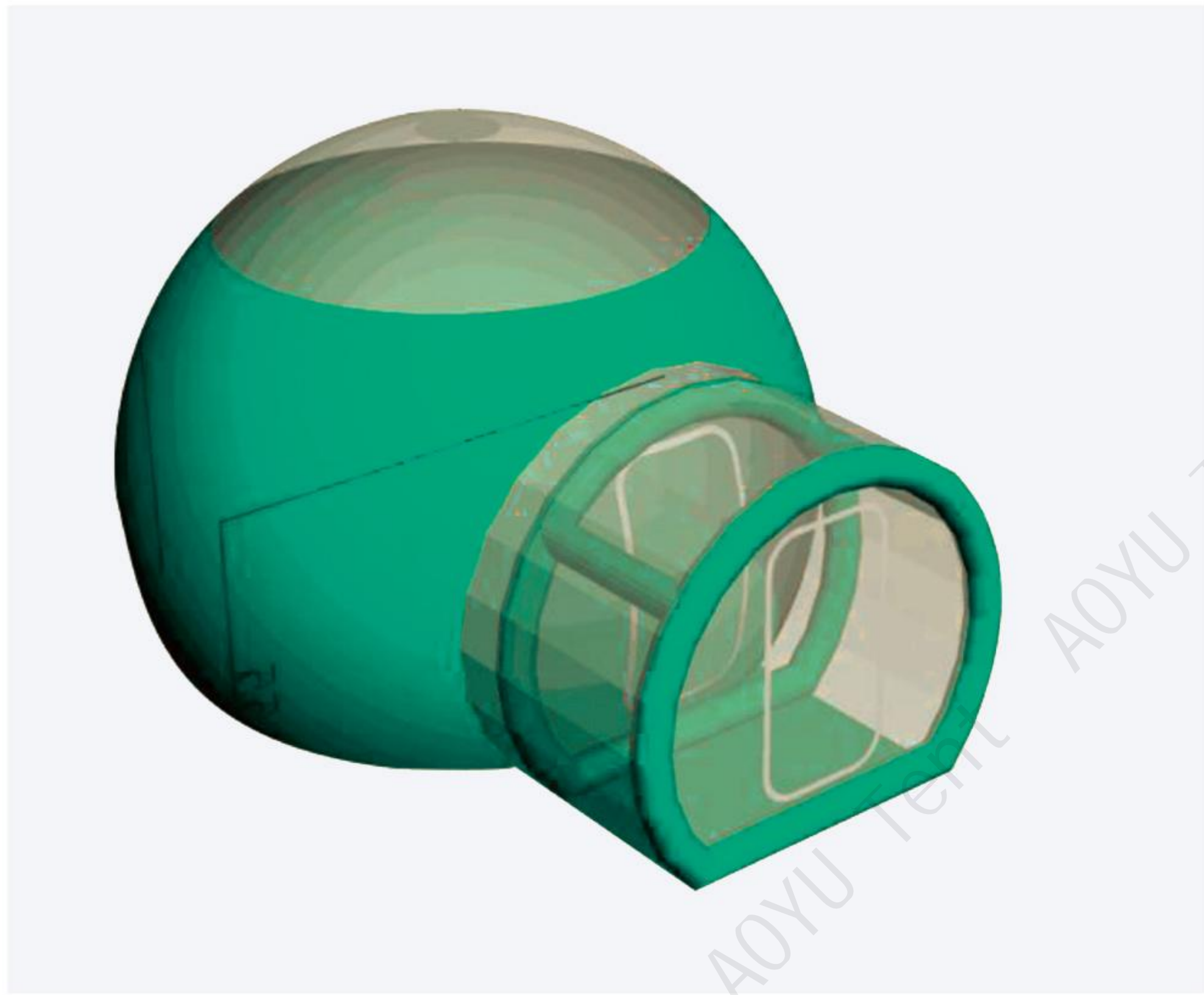
Bedroom Floor Area (m ²)	12.56
Bedroom Floor Diameter(m)	Φ3.5
Bedroom Height(m)	3
Hallway (L)	1.5
Hallway (W)	1.5
Hallway (H)	2.2



4.5m Bubble House

Bedroom Floor Area (m ²)	15.9
Bedroom Floor Diameter(m)	Φ4
Bedroom Height(m)	3.2
Hallway (L)	1.5
Hallway (W)	1.5
Hallway (H)	2.2

Inflatable Bubble House - One Room-Air



5m Bubble House

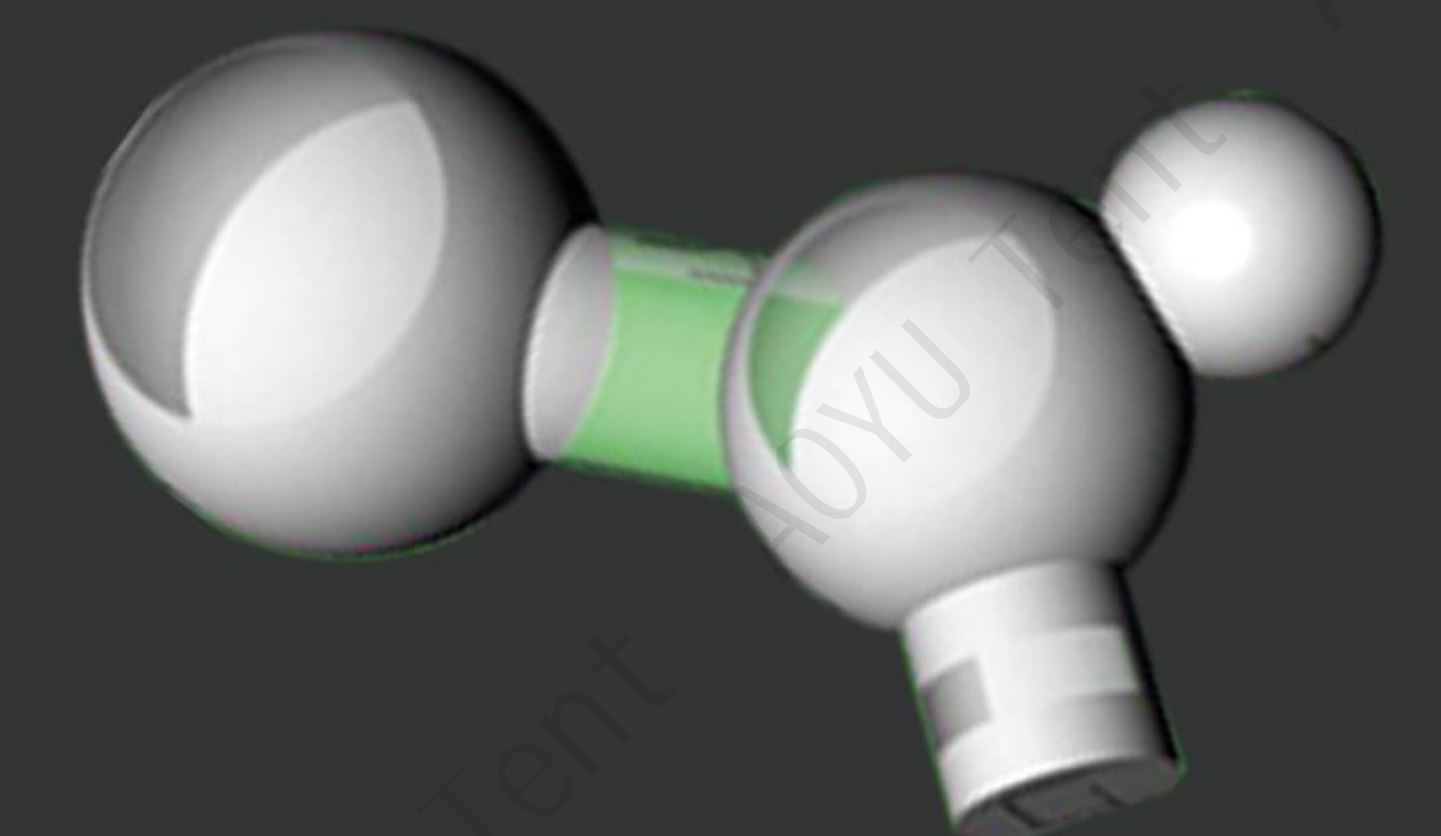
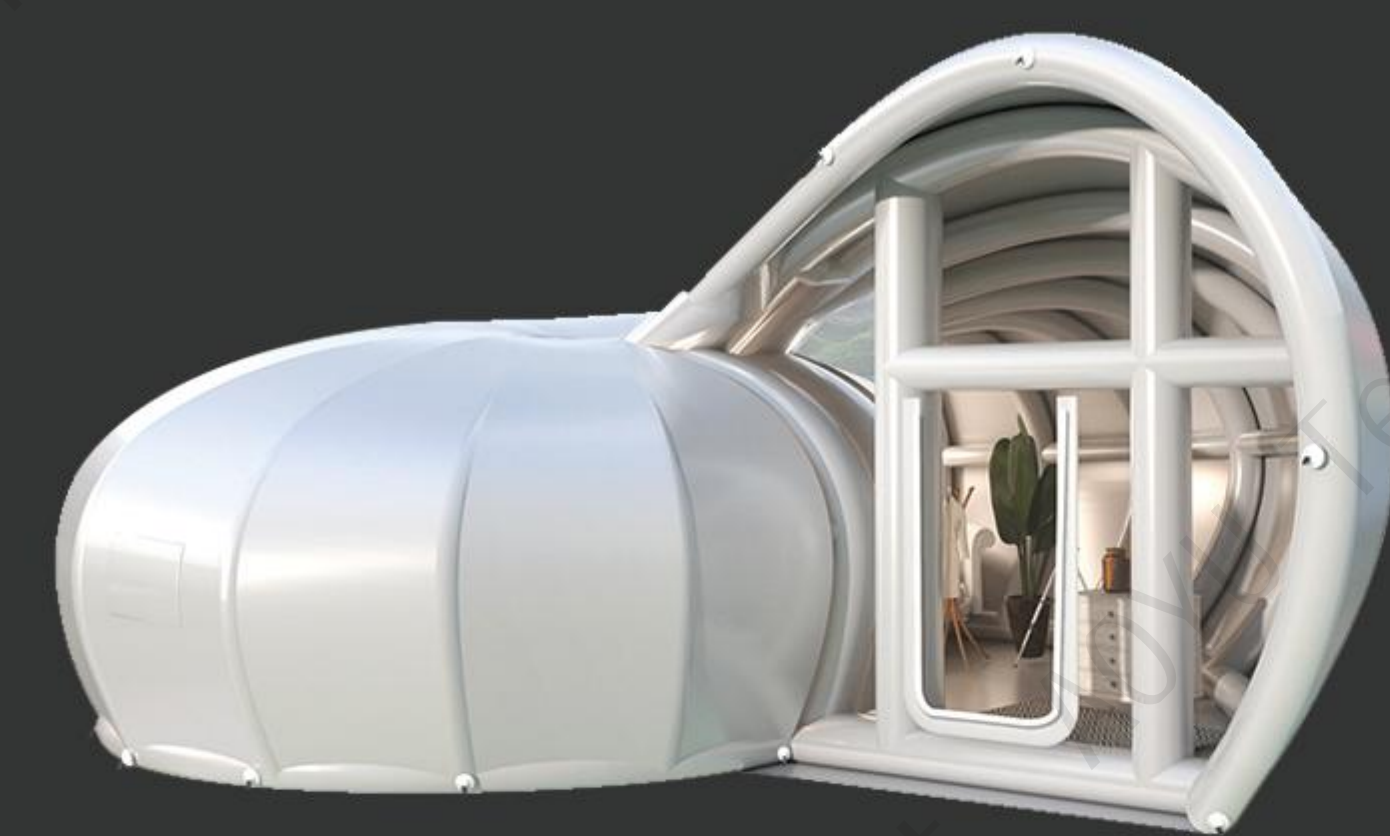
Bedroom Floor Area (m ²)	19.6
Bedroom Floor Diameter(m)	Φ5
Bedroom Height(m)	3.75
Hallway (L)	1.5
Hallway (W)	1.5
Hallway (H)	2.2



5.5m Bubble House

Bedroom Floor Area (m ²)	23.3
Bedroom Floor Diameter(m)	Φ5.5
Bedroom Height(m)	4.1
Hallway (L)	1.5
Hallway (W)	1.5
Hallway (H)	2.2

More products to choose from



Bubble House Domestic Case



Bubble House Case Abroad



Bubble House Case Abroad



Bubble house optional accessories

Turbofan



- Low-energy
- High-efficiency
- Dust prevention
- firm

Sunshade net



- UV Proofing
- sunshade
- Thermal insulation
- Sun Protection

Air pump



- Pollution-free
- heavy pressure
- Long service life
- Low-energy

Constant pressure device



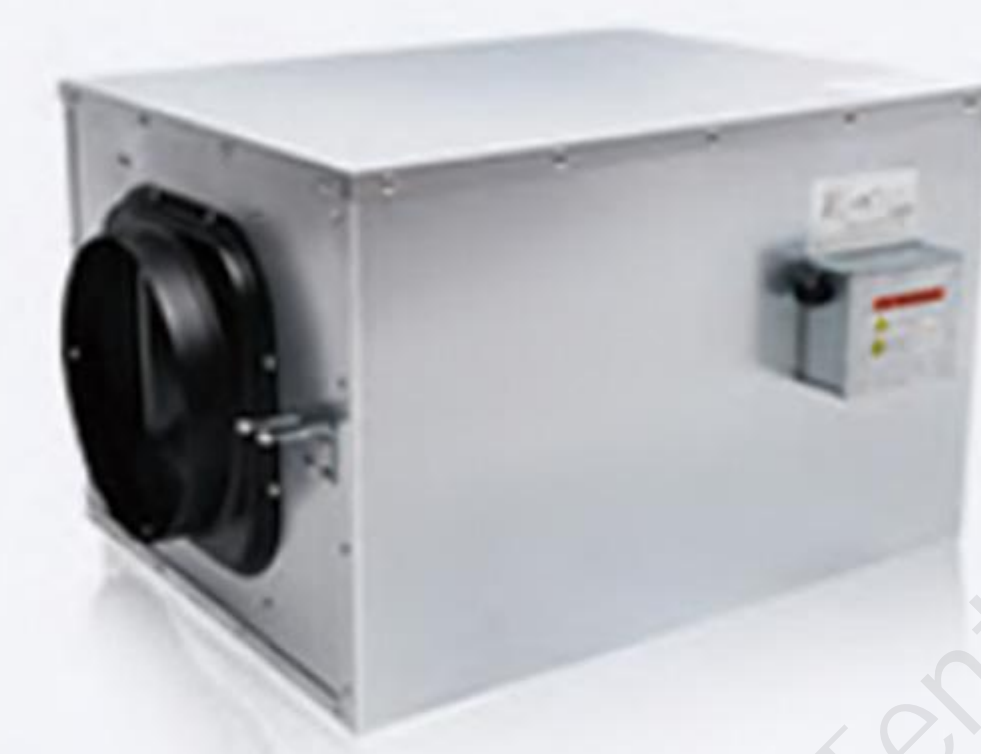
- High precision
- High temperature resistance
- Stability
- Low-energy

Protective housing



- dustproof
- Rain-proof
- Guard against theft
- Moistureproof

Silent fan



- Silence mode
- high efficiency
- Environmental protection
- Energy conservation

Optional soft furnishings



Door



Flooring



Automatic sunroof



Projection lamp



Air conditioning



Bath



Toilet



One-piece bathroom



Beds



Four Piece Set



Bedside tables



Wardrobe



Dressing table



Clothes hangers



Shoe rack



coffee table



Sofa



Chairs



Carpets

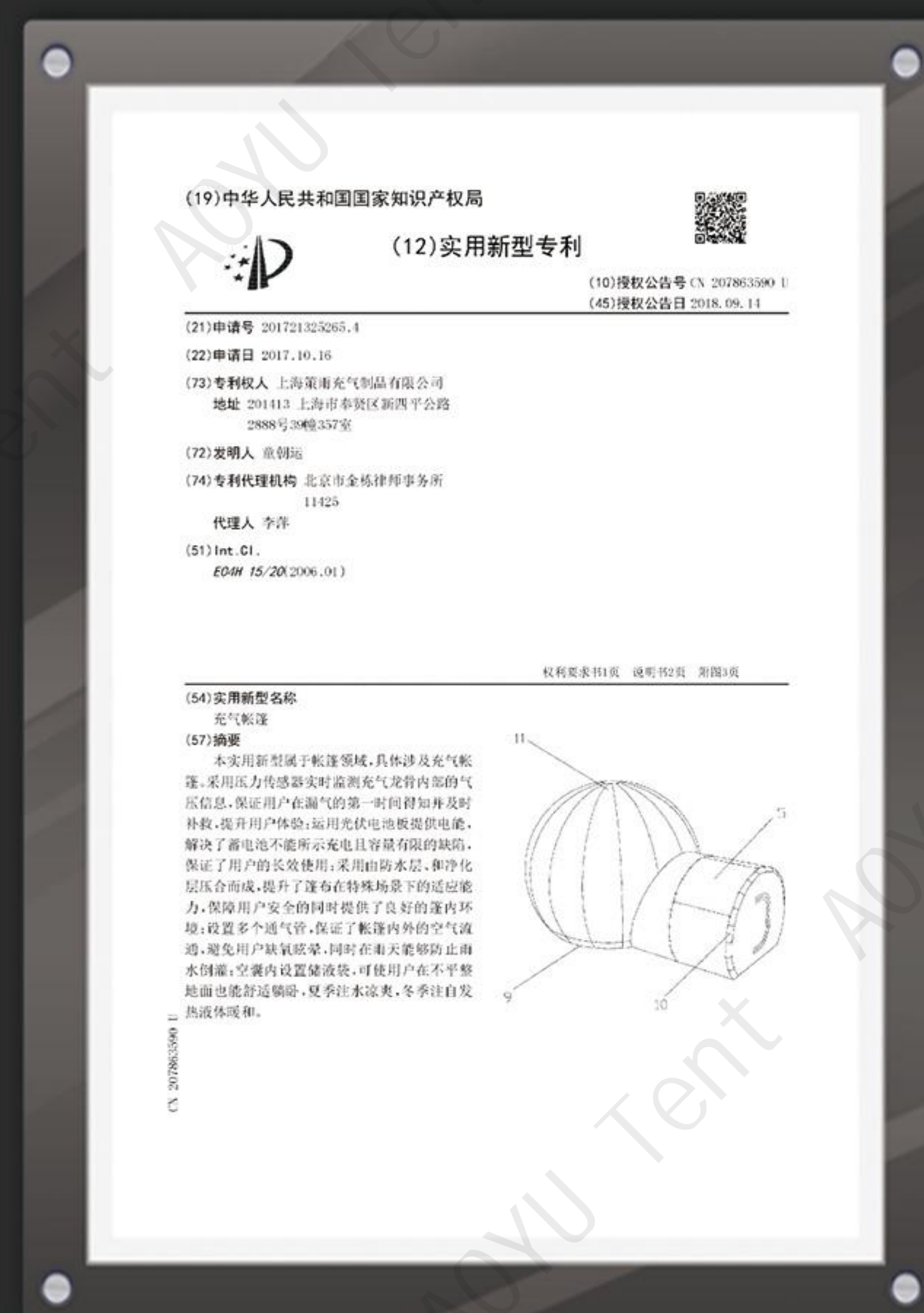


Curtains

AOYU

PATENT CERTIFICATE

120+ 



Product Installation

Please be sure to wear gloves when installing the product to prevent scratching the product parts

When installing, each component hole needs to be aligned and then screwed

Cautions

Prohibit contact between the product and strong acids, strong alkalis and other strong corrosive organic solvents

Prevent sharp objects from scratching the product

Products should be handled lightly

Product appearance and configuration, subject to the real thing

This series of products have applied for utility model and appearance patents, imitation and sales of similar shoddy products, the manufacturer will retain the right to pursue the law.

This series of products will be improved and updated from time to time, the effect is for reference only, to The actual product shall prevail; the manufacturer has the final right of interpretation.



Thermal insulation

Winter insulation existing products with air conditioning, electric floor heating, internal auxiliary heaters to regulate the indoor temperature, the conditions can be ordered double star room, heat insulation.

Isolation heat

The current conventional products with curtains to shade the sun, air conditioning to adjust the temperature, the budget is sufficient to order anti-infrared insulation type PC star room, temperature difference of about 8 °C.

Soundproofing

Itself is sound insulation material about sound insulation is 26dB, closed semi-enclosed light rail, tunnel noise barrier material

Privacy

The dome has electric curtains, the side circle has manual curtains, the conditions can be side circle also choose electric curtains, and the bedroom bed part or bathroom fullA circle of the bedroom bed or bathroom can choose the opaque ivory white PC board molding.

Strength

Very high, bricks, stones, hammers can not break, police shields, aircraft windows also use this material, commonly known as "endurance plate".

Fire prevention

PC board is a fireproof material, flame-retardant B1 grade, fire extinguished, through the national fireproof building materials testing center (Dujiangyan) testing, can provide test reports.

Material

PC board (polycarbonate) + aluminum profile.

Lifespan

Warranty 10 years, generally 20 years of normal use no problem, 10 years after the yellowing is very small, the naked eye can hardly see the change. Waterproof: physical waterproof, all connections are flanged upright side water barrier structure.

Fresh Air Ventilation System

There are doors and windows, ventilation fans, air conditioning for ventilation, the conditions can choose a fresh air supply system, the budget is enough can also choose to upgrade the dome open system.

Wind load snow load

The spherical structure itself is designed not to pocket the wind Less snow accumulation, coupled with the reinforcement of the star room, some have column support, more problem-free, has been tested.

Connected to the ground

The ground to play expansion screws and the bottom aluminum profile connection, the site such as can not use cement prefabricated ground, you can use bolts and anti-corrosion wood and other connections fixed.

Ground treatment

The floor is required to do in advance by the customer to level, mat high waterproof, such as floor heating need to lay a layer of Olson board and other insulation isolation layer below.

Shipping

Wooden box or crate packing