

INIKA

ORGANIC

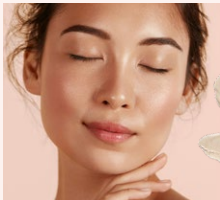
Liquid Foundation Shades



Porcelain (PL1)
Light with cool undertones



Cream (NL2)
Light with neutral undertones



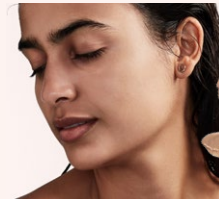
Nude (NL3)
Medium with neutral undertones



Beige (YL6)
Medium with warm undertones



Honey (YL7)
Medium to tan with warm undertones



Tan (PL8)
Tan with cool undertones



Liquid Foundation

100% Natural liquid mineral foundation with a buildable dewy finish, and complexion-loving botanicals.