

# INIKA

ORGANIC

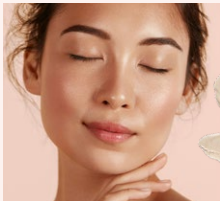
## BB Cream Shades



**Porcelain (PL1)**  
*Light with cool undertones*



**Cream (NL2)**  
*Light with neutral undertones*



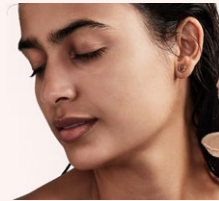
**Nude (NL3)**  
*Medium with neutral undertones*



**Beige (YL6)**  
*Medium to tan with warm undertones*



**Honey (YL7)**  
*Tan with warm undertones*



**Tan (PL8)**  
*Tan with cool undertones*



### BB Cream

Achieve a nourished and natural-looking even complexion with this skin-loving, lightweight BB Cream.