

Existing roof installation instructions for roof infill strips

1. Installation roof infill along gutter line

Loosen the row of fasteners (A) closest to the end of the roof sheet where it meets the gutter line.

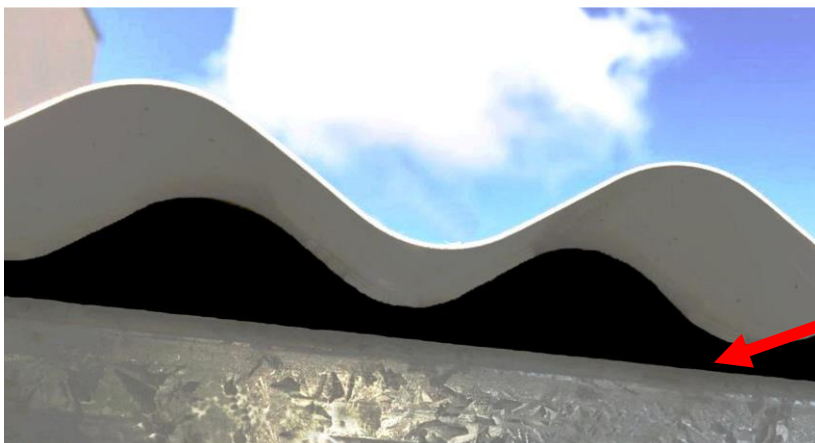
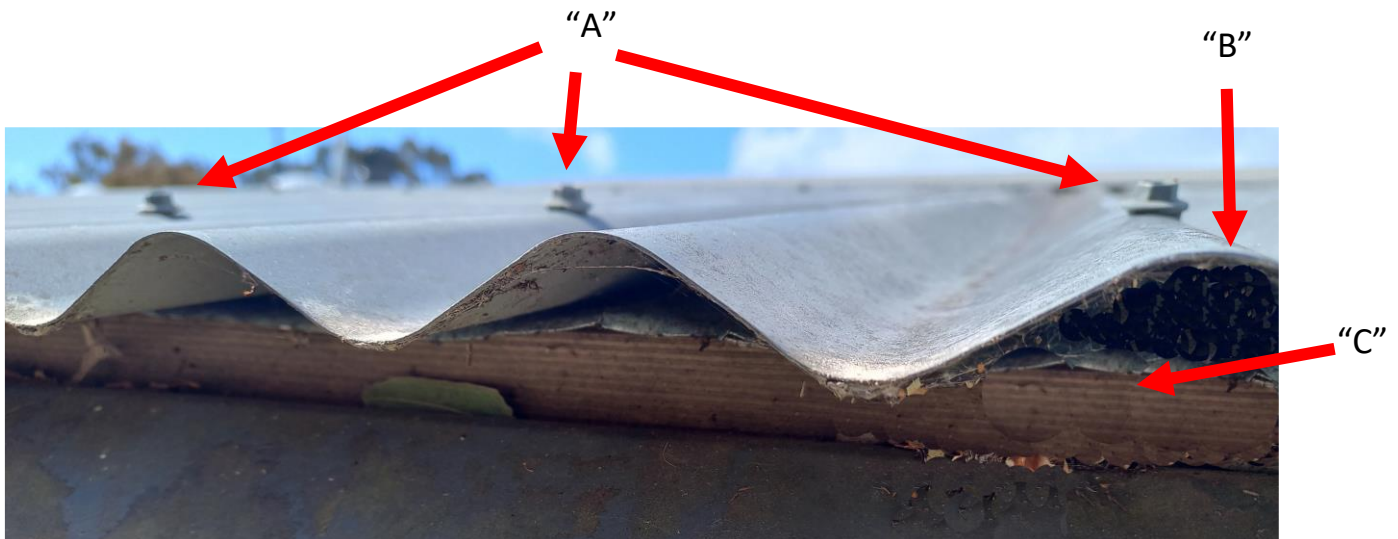
Raise the sheet (B) by approximately 5mm, so that the roof infill strip can be placed underneath, between the roof sheet & the purlin (C).

The infill should always be in front of the fasteners (A).

Adjust by stretching or contracting the length of the roof infill strip so that it aligns with the roof sheet and fills the profile gaps.

The next infill strip is put in place, so the dovetails join to its predecessor.

Once all infills are in, check the alignment then refasten the sheet.



Infill strip installed on the purlin & under the roof sheet

2. Installation for roof infill under roof caps

The roof infill strip is fitted in reverse to a normal roof infill strip installation as it goes on top of the roofing sheet and underneath the roof cap.

First, loosen the fasteners (A) on the roof cap.

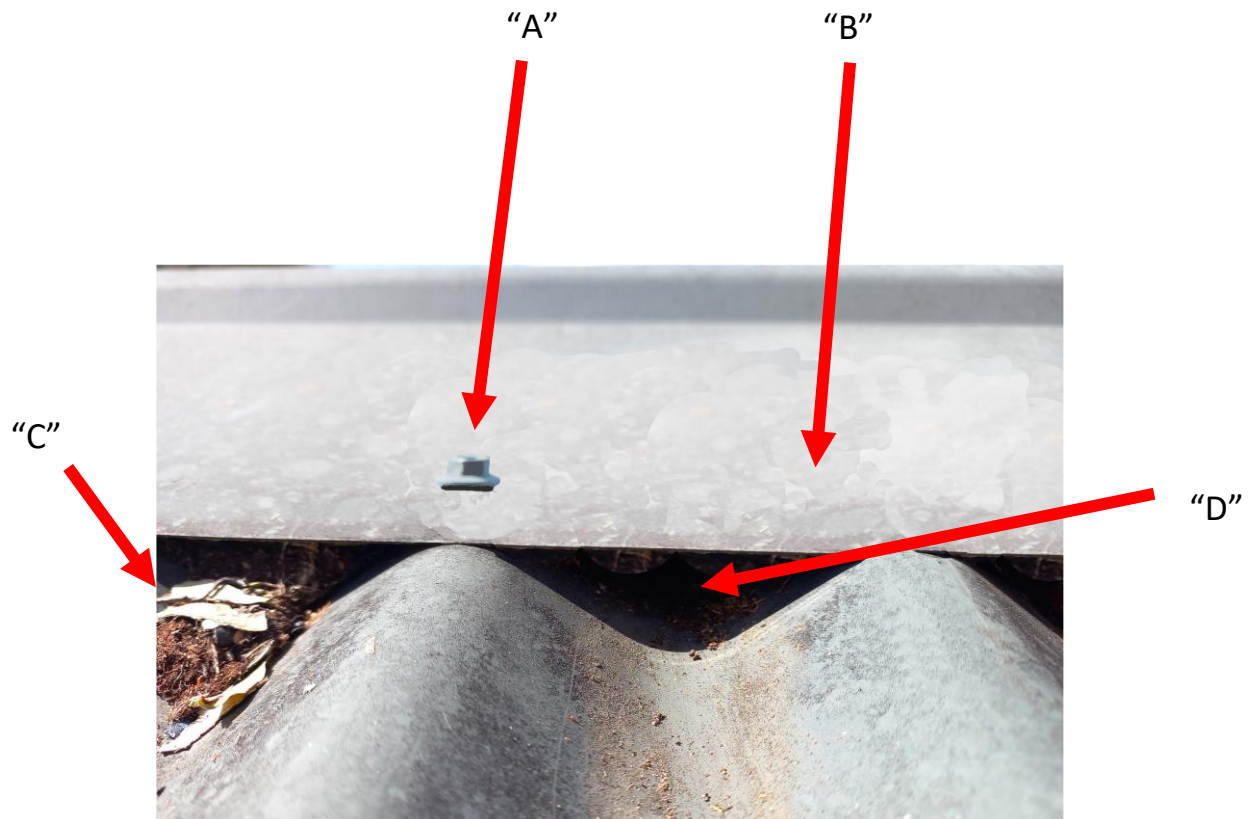
Raise the roof cap (B) about 5mm to allow the roof infill strip to slide underneath between the roof sheet & the capping so the whole profile is just under the roof cap edge.

Remove any leaves & sticks prior to infill installation (C)

Adjust by stretching or contracting the length of the roof infill strip so that it aligns with the sheet and fills the profile gaps (D)

The next infill strip is then put in place so the dovetails join to its predecessor.

Once all infills are in, check the alignment then refasten the sheet.



3. Installation for roof infill with hips & valleys

Hips/valley profiles vary by the different angles and pitch of the roof.

Check that you have the correct “angle” hip/ valley roof infill strip profile.

Loosen the row of fasteners (A)

Raise the metal piece (B) about 5mm to allow the roof infill strip to slide underneath between the roof sheet & the metal hip/valley.

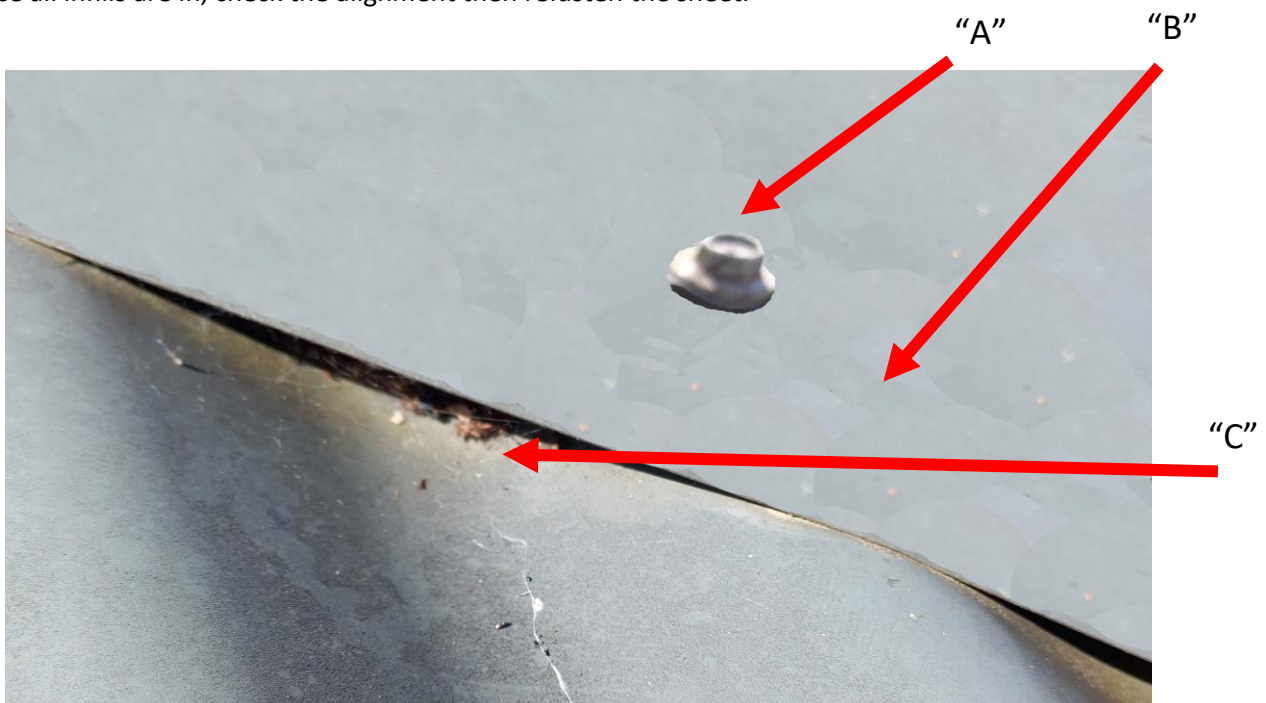
Remove any leaves & sticks prior to infill installation.

Place the roof infill strip underneath so that it is between the roof sheet & the hips/valley’s metal sheeting & just behind the edge.

Adjust by stretching or contracting the length of the roof infill strip so that it aligns with the roof sheet profile & is filling the profile gap (C).

The following infill strip is placed so the dovetails join to its predecessor

Once all infills are in, check the alignment then refasten the sheet.



Warning

When working on roof structures, approved scaffolds & fall restraints are required by all operators as specified by local authorities.

The fitment is the responsibility of the installer.

Roofing fasteners are not to be screwed into the infill strip profiles, as downward pressure between the roofing sheets & the purlin, roof cap or hip/valley sheeting is what keeps the profiles in place
No gap more than 2mm is allowed in the roofing structure for the infill to perform correctly.