

# Existing roof installation instructions for **BAL-FZ** roof infill strips

## 1. Installation roof infill along gutter line

Loosen the row of fasteners (A) closest to the end of the roof sheet where it meets the gutter line.

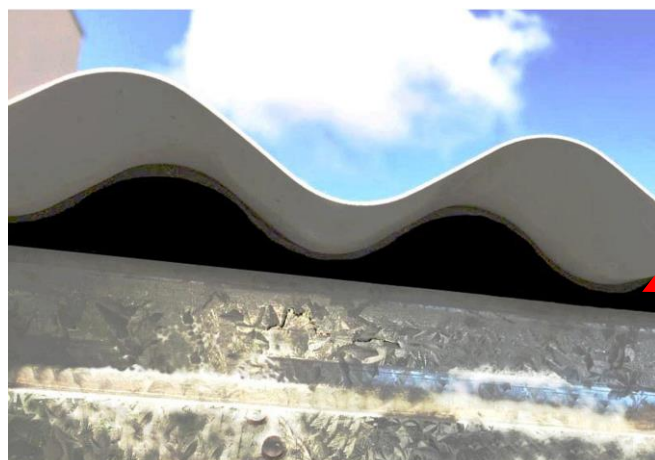
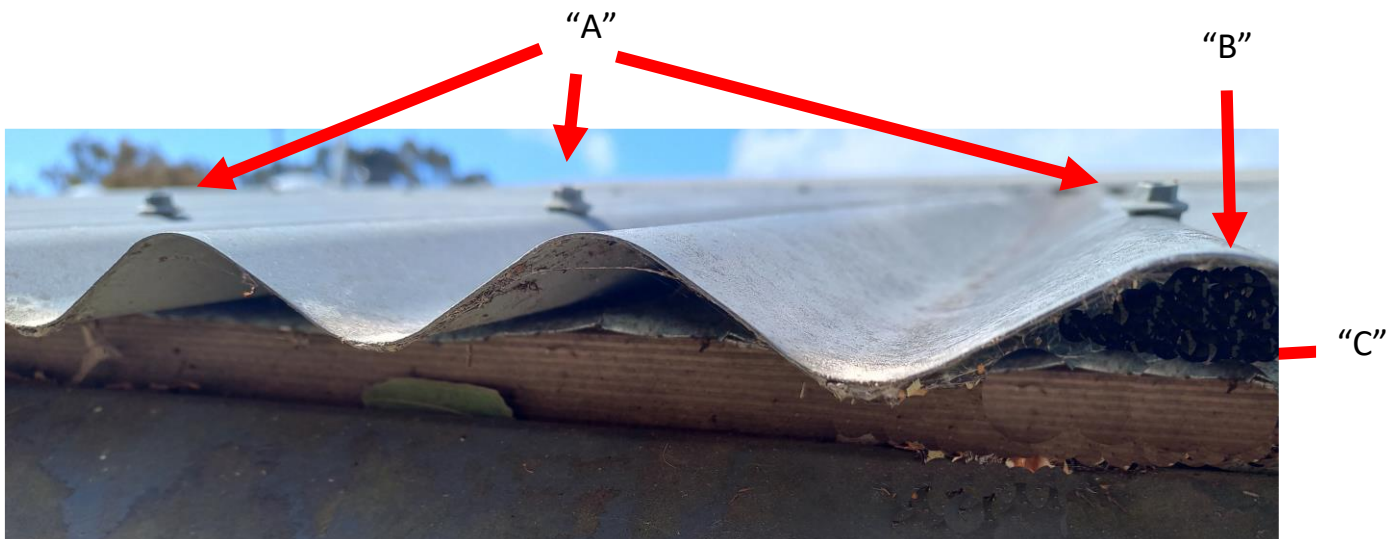
Raise the sheet (B) by approximately 10mm, so that the roof infill strip can be placed underneath, between the roof sheet & the purlin making sure the metal frame is facing outwards(C).

The infill should always be in front of the fasteners (A).

Adjust by stretching or contracting the length of the “slide” component of the roof infill strip so that it aligns with the roof sheet and fills the profile gaps.

The next infill strip is put in place, so the overlap tab , overlaps with its predecessor.

Once all infills are in, check the alignment then refasten the sheet.



Installed on the purlin &  
under the roof sheet with  
the metal facing outwards

## 2. Installation for roof infill under roof caps

The roof infill strip is fitted in reverse to a normal roof infill strip installation as it goes on top of the roofing sheet and underneath the roof cap.

First, loosen the fasteners (A) on the roof cap.

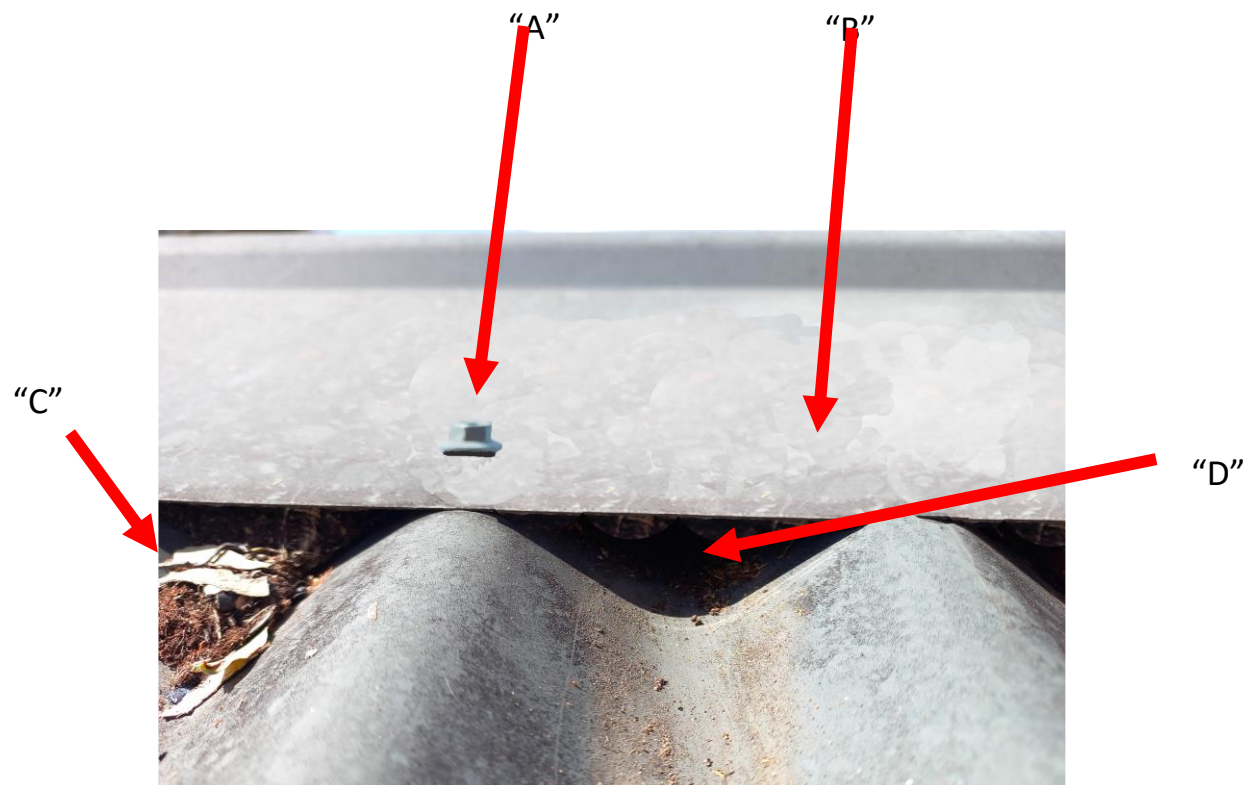
Raise the roof cap (B) about 5mm to allow the roof infill strip to slide underneath between the roof sheet & the capping so the whole profile is just under the roof cap edge.

Remove any leaves & sticks prior to infill installation (C)

Adjust by stretching or contracting the length of the “slide” component of the roof infill strip so that it aligns with the roof sheet and fills the profile gaps (D).

The next infill strip is put in place, so the overlap tab , overlaps with its predecessor.

Once all infills are in, check the alignment then r



### Warning

When working on roof structures, approved scaffolds & fall restraints are required by all operators as specified by local authorities.

The fitment is the responsibility of the installer.

Roofing fasteners are not to be screwed into the infill strip profiles, as downward pressure between the roofing sheets & the purlin, roof cap or hip/valley sheeting is what keeps the profiles in place

No gap more than 2mm is allowed in the roofing structure for the infill to perform correctly.