



Rangehood

Instruction Manual

EA60SX

EA90SX

EP600SW SX

EP900SW SX

**EURO APPLIANCES BY EUROSTYLE GROUP**

## CONTENT

1 .....	Notice
2 .....	Installation Requirements
3 .....	Installation – Fitting the Rangehood.
4 .....	Safety Warning
5 .....	Instructions for Use
6 .....	Maintenance
7 .....	Troubleshooting

## **(1) Notice**

1. Thank you for choosing our Rangehood. Please read this instruction manual carefully before use.
2. The installation work must be undertaken by a qualified and competent installer in compliance with applicable Australian Standards.
3. Euro Appliances disclaims all liability for any damage or injury caused as a result of not following these instructions for installation.

This Rangehood is suitable for connection to a 240V, 50Hz power supply with a proper earth.

## **Contents**

**1 x Rangehood**

**1 x Packet of Screws & Fittings**

**1 x plastic outlet with flaps**

**1 x Set of Chimney Pieces (Upper & Lower)**

**1 x Operating & Installation Instructions**

## **(2) Installation - Requirements**

**Warning:** This Rangehood is suitable for indoor installation only in accordance with the following:

- Installation must be performed by a qualified competent installer.
- If installed above a barbecue, the minimum distance from the cooking grid/plate is 120cm.
- If installed above a cooking appliance, the minimum distance from the cooking surface is 65cm.

1. Before installation, please ensure the area is clean to avoid suction of any debris such as bits of broken wood, sawdust, etc.
2. Flexible duct bending should be  $\geq 120^\circ$  .
3. There shall be adequate ventilation of the room when the Rangehood is used at the same time as appliances burning gas or other fuels (not applicable to appliances that only discharge the air back into the room).
4. The air must not be discharged into a flue that is used for exhausting fumes from appliances burning gas or other fuels (not applicable to appliances that only discharge the air back into the room).
5. Regulations concerning the discharge of air have to be fulfilled.

### **(3). Installation – Fitting the Rangehood.**

This Rangehood must be placed at a distance of 65cm minimum from the cooking surface of a cooker/hotplate and 120cm minimum from the cooking surface of a BBQ.

#### **3.1 Models without Glass:**

3.1 Fit the plastic flaps to the outlet vent of the canopy by deforming the flaps slightly so that the ends fit into the holes (refer to Pic 3 for location of the flaps).

3.2 Fit the supplied Hook to the wall using the 36mm long screws supplied (refer to Pic 1). Fixing method to the wall must be capable of supporting the weight of the Canopy.

3.3 Lift the Canopy onto the Hook and make sure both left and right hand hooks are engaged (refer to Pic 1).

3.4 Fit the Flexible Duct (not supplied) to the plastic outlet (refer to Pic 2).

3.5 Exhaust the Flexible Duct to the outdoors and fit a one way valve to prevent rain & dust entering into the Canopy.

3.6 Determine the height of the U-shaped section. Line up the holes in the plate with those in the lower U-Shaped section and fix the plate to the wall using the 36mm long screws supplied (refer to Pic 3 item 1).

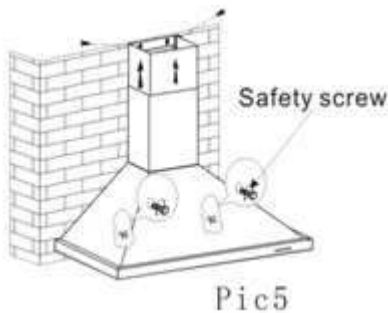
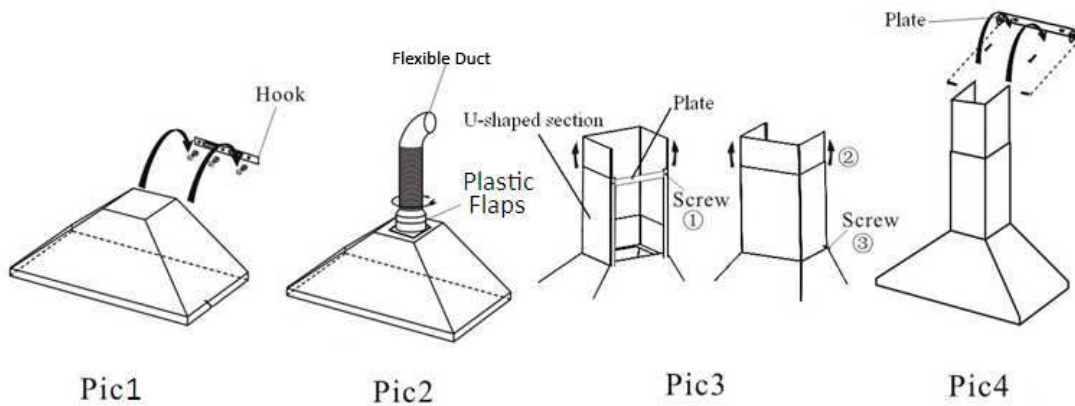
3.7 Align the holes in the lower corner of the U-shaped section and fit the 9mm screw supplied through each side (refer to Pic 3 item 3).

3.8 Pull up the inner U-shaped section to a suitable height and align it with the upper plate (refer to pic 4).

3.9 Fix the upper plate to the wall using the 36mm long screws. Fix the inner U-shaped section to the upper plate using two 9mm screws on either side of the bracket (refer to pic 4).

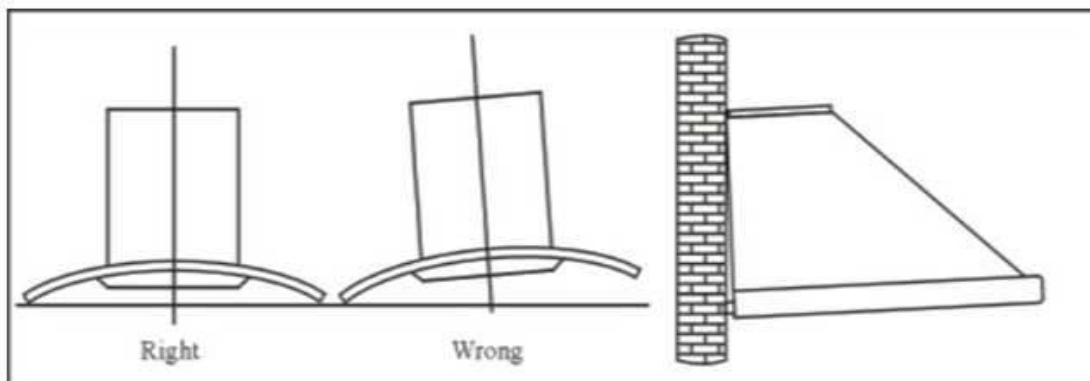
3.10 Finally, drill two Ø3.5mm holes in line with the 2<sup>nd</sup> plate where the upper and lower sections overlap. Use a 9mm long screw on each side to fix them together.

Note: Fix the Canopy with two 30mm safety screws. The two safety screw holes are positioned on the back casing (refer to Pic 5).



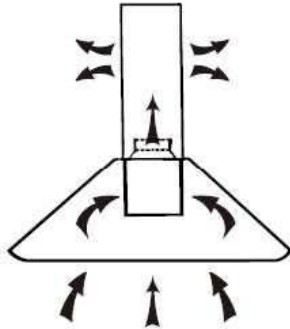
**Warning: Failure to install the screws or fixing device in accordance with these instructions may result in electrical hazards.**

After installation, make sure that the canopy is level to avoid grease collecting at one end.



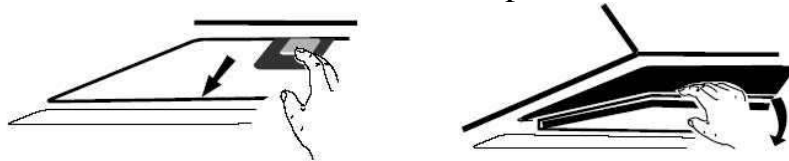
Pic 6

Note: If you do not have an outlet to the outside, you can install the Rangehood so that it recirculates the air. The installation is the same as above except that you do not install the flexible duct. For recirculating installations, we recommend that you fit the activated carbon filters.

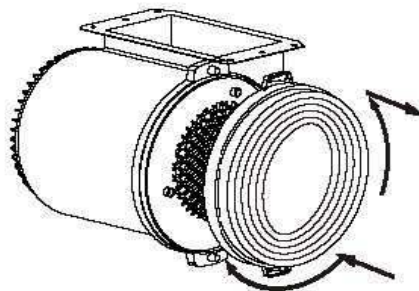


Activated carbon filter can be used to trap odors for recirculating installations.

In order to install the activated carbon filter, the metallic anti-grease filter should be detached first. Press the lock and pull it downward.



Plug the activated carbon filter into the unit and turn it in anti-clockwise direction. Repeat the same on the other side.



- Make sure the filter is securely locked. Otherwise, it could loosen and cause damage to the unit.
- When activated carbon filter is attached, the suction power will be

reduced.

#### **(4) Safety Warning**

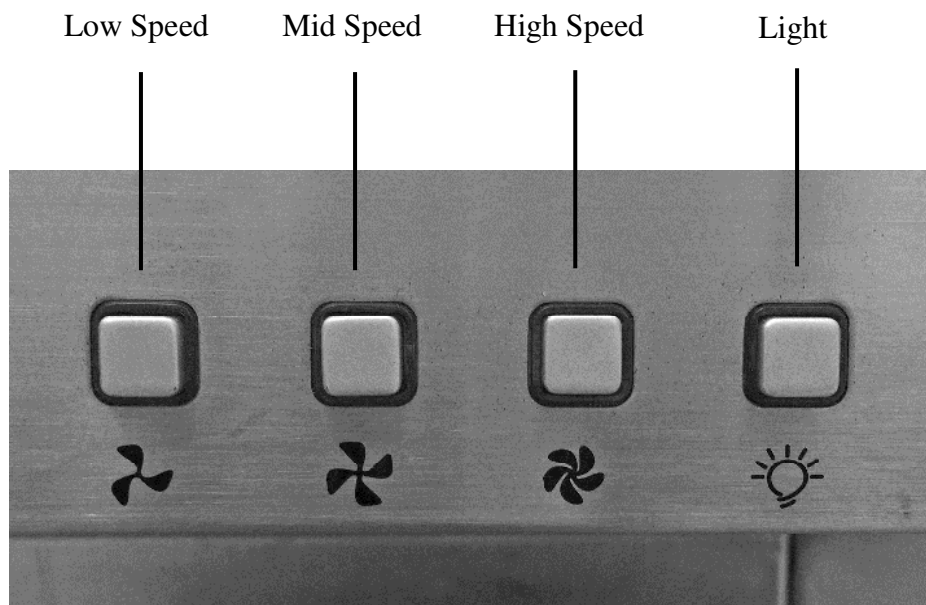
- This Rangehood is for domestic use only, it is not suitable for commercial purposes.
- Please ensure that installation is performed by a qualified competent installer.
- The Rangehood and its filter mesh should be cleaned regularly in order to keep it in good working order.
- Before cleaning, please switch the power off at the main supply.
- Clean the Rangehood according to the instruction manual. There is a fire risk if cleaning is not carried out in accordance with the instructions.
- If there is any fault with the appliance, please switch off immediately, disconnect and call the service department to arrange a service.
- DO NOT flambé under the Rangehood.
- CAUTION: Accessible parts may become hot when used with cooking appliances
- This appliance is not intended for use by persons (including children) with reduced physical, sensory or mental capabilities, or lack of experience and knowledge, unless they have been given supervision or instruction concerning use of the appliance by a person responsible for their safety.
- Children should be supervised to ensure that they do not play with the appliance. Never let the children operate the Rangehood.
- If the supply cord is damaged, it must be replaced by the manufacturer, its service agent or similarly qualified persons in order to avoid a hazard.



## (5) Instructions for Use

Switch on the power to the Canopy.

1. Push the low button, the indicating light around the button will illuminate and the motor runs at low speed. Push it again and the motor will stop and the light will switch off.
2. Push the middle button, the indicating light around the button will illuminate and the motor runs at mid speed. Push it again and the motor will stop and the light will switch off.
3. Push the high button, the indicating light around the button will illuminate and the motor runs at high speed. Push it again and the motor will stop and the light will switch off.
4. Push the light button; the indicating light around the button will illuminate and the two lighting lamps will switch on. Push it again and the lamps will switch off.



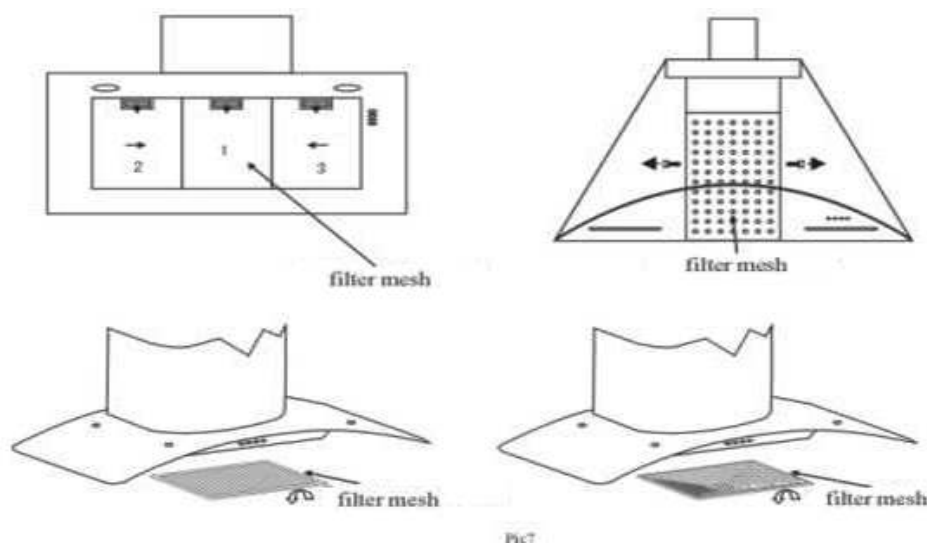
## (6) Maintenance

### 6.1 Cleaning the filters

The filter mesh is made of high-density stainless steel. Please do not use corrosive detergent on it. Keeping this filter clean will keep the appliance running correctly. Please strictly follow the guidelines below.

Method 1: Put the mesh into a sink of clean water, pour on detergent, and soak for 2-3 minutes. Wear gloves and clean with a soft brush. Please do not apply too much pressure, as the mesh is delicate and can be easily damaged.

Method 2: Wash in a dishwasher with the temperature set to around 60 degrees.



### 6.2 Cleaning the Rangehood

1. To protect the main body from corrosion, the Rangehood should be cleaned with hot water plus non corrosive detergents every two months.

2. Please do not use abrasive detergent because it will damage the Rangehood.
3. Keep water away from motor and other electrical parts as this will cause damage to the appliance.
4. Before cleaning the appliance please remember to shut off the power and disconnect the plug.
5. Do not expose the carbon filter to heat.
6. Please don't tear open the fixed bar around the carbon filter.
7. If the supply cord is damaged, it must be replaced by the manufacturer, its service agent or similarly qualified persons in order to avoid a hazard.

## (7) Troubleshooting

**Warning: Service must be performed by an authorised competent person.**

Fault	Cause	Solution
Light on, but motor does not work	The flaps are blocked	Remove the blockage.
	The capacitor is damaged	Call for service.
	The motor is jammed due to bearing damage	Call for service.
	There is a bad smell coming from the motor	Call for service.
Light does not work, motor does not work	Beside the above mentioned, check the following:	
	Light damaged	Call for service.
	Power cord not connected	Check plugged in and switched on that power is available.
Oil leakage	Filters saturated with cooking oils.	Clean the filters.
	Leakage between the connection of U-shaped section and Rangehood	Remove U-shaped section and seal

Vibrations	The flaps are damaged and causes shaking	Call for service.
	The motor is not fixed securely to the Rangehood body	Call for service.
	The Rangehood body is not fixed securely to the wall	Notify your installer.
Insufficient suction	The distance between the Rangehood and the cooking surface is too much	Notify your installer.
	Too much ventilation from open doors or windows	Close doors or windows, choose an alternative location, if possible, away from draughts.
The Rangehood inclines	The fixing screws are not tight enough	Notify your installer.
	The hanging screws are not tight enough	Notify your installer.

Eurostyle Group trading as Euro Appliances

Service Line: (08) 8165 1012

Fax: (08) 8165 1018

Email: [admin@eurostylegroup.com.au](mailto:admin@eurostylegroup.com.au)

