

DE LA ESPADA  
UPHOLSTERY COLLECTION  
2021

**DE LA ESPADA**

# INDEX

DE LA ESPADA

	<u>PAGE</u>	<u>PRICE RANGE</u>
DE LA ESPADA EDIT.....	3	
<b><u>FABRICS</u></b>		
FEZ.....	5	(A)
STEP.....	6	(A)
AVALON 2.....	7	(C)
PHLOX.....	8	(C)
HARALD 3.....	9	(A)
BYRAM.....	10	(D)
BALDER 3.....	11	(B)
SUNNIVA 3.....	12	(B)
CLAY.....	13	(A)
NARA.....	14	(C)
VIDAR 3.....	15	(C)
MOSS.....	16	(A)
SAFIRE.....	17	(A)
ZERO.....	18	(A)
ATOM.....	19	(D)
SONAR 3.....	20	(C+)
REED.....	21	(A)
JADE.....	22	(A)
FUSE.....	23	(C)
<b><u>LEATHER / SHEEPSKIN</u></b>		
NATURAL GRAIN LEATHER.....	24	(B)
ELMORUSTICAL VIII.....	25	(C+)
CORRECTED GRAIN / FINISHED..	26	(A)
CURLY SHEEPSKIN.....	27	(D)

DE LA ESPADA UPHOLSTERY COLLECTION 2021 - EDIT



FEZ 005



STEP 005



AVALON 2 035



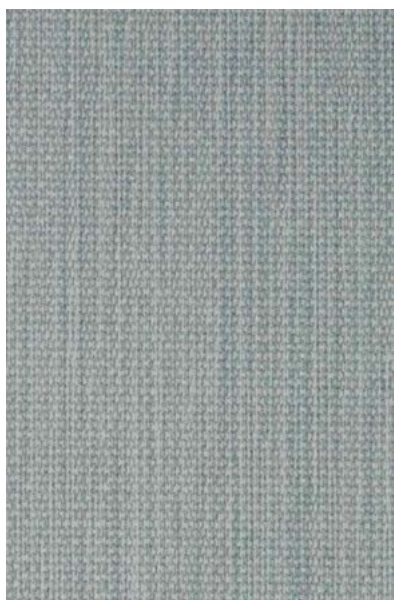
PHLOX 243



HARALD 3 283



BYRAM 131



BALDER 3 132



SUNNIVA 3 717



CLAY 015



NARA 005

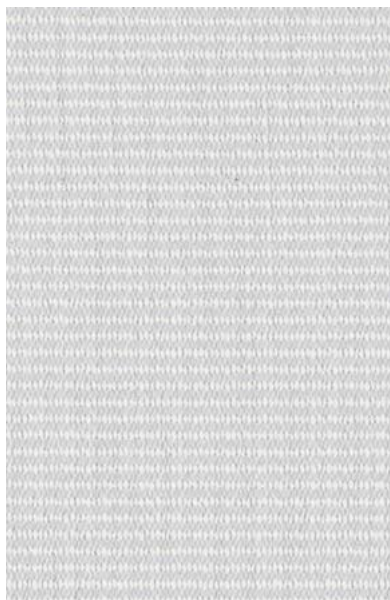
DE LA ESPADA UPHOLSTERY COLLECTION 2021 - EDIT



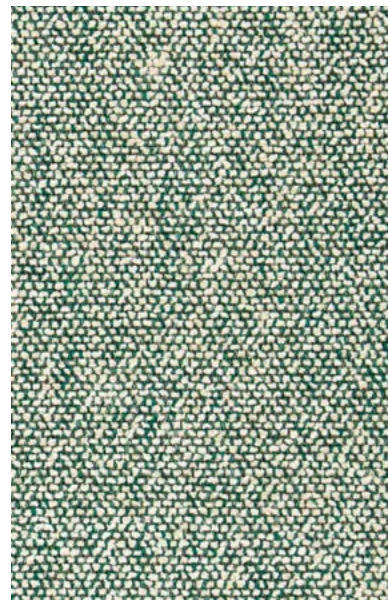
JADE 002



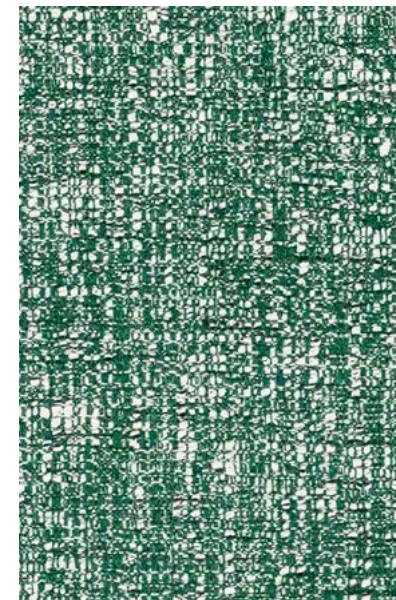
ZERO 005



FUSE 121



MOSS 003



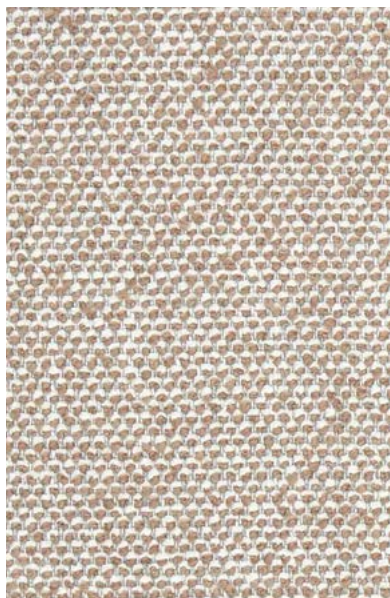
SONAR 3 974



VIDAR 3 152



REED 008



SAFIRE 004



ATOM 124

# FEZ

This jacquard velvet textile is designed by Vincent Van Duysen. A chenille base with a cotton yarn pile creates a textile reminiscent of corduroy with a casual and rich appearance.

**MATERIAL:**

83% Cotton  
15% Polyester  
2% Viscose

**DESIGNER:**

Vincent Van Duysen

**DURABILITY:**

60,000 Martindale

DE LA ESPADA



005



010



008



009



011



RANGE

# STEP

DE LA ESPADA

Step is a modern interpretation of a classic twill in chenille yarn. The yarn-dyed tonal colours create a subtle diagonal stripe on a fabric with a soft and gentle handle.

**MATERIAL:**

48% Cotton  
30% Viscose  
22% Polyester

**DESIGNER:**

Sahco

**DURABILITY:**

40,000 Martindale



004



005



019



002



015



018



023



009



RANGE

## AVALON 2

Avalon velvet is a much-loved basic. This piece-dyed fabric has a unique glossy surface almost reminiscent of silk. It has flame retardant properties and is extremely hardwearing.

**MATERIAL:**  
100% Trevira CS

**DESIGNER:**  
Sahco

**DURABILITY:**  
100,000 Martindale

DE LA ESPADA



035



056



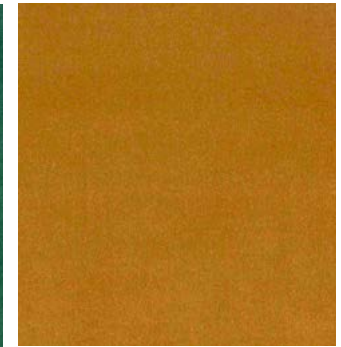
034



038



055



050



003



004



007



RANGE

# PHLOX

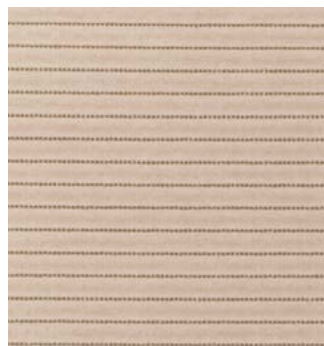
Phlox is designer Raf Simons' take on a classic corduroy. The ribbed structure is sensuous and tactile with its velvety handle and amped-up scale. It is extremely hardwearing.

**MATERIAL:**  
90% Cotton, 10% Polyester

**DESIGNER:**  
Raf Simons

**DURABILITY:**  
100,000 Martindale

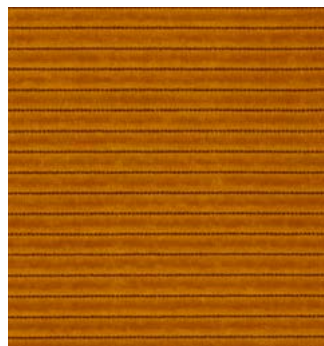
DE LA ESPADA



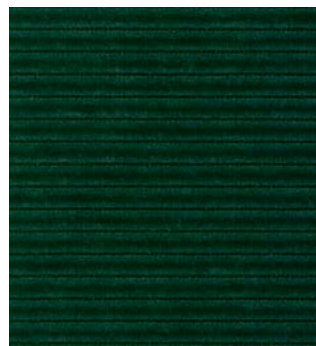
213



243



443



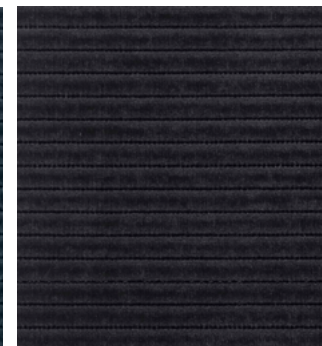
983



783



883



183



RANGE



# HARALD 3

DE LA ESPADA

Harald is a closely-woven, short-pile velour with a luxuriously soft texture and rich colour. Designed by Raf Simons and Fanny Aronsen, Harald is hardwearing at 100,000 rubs Martindale.

MATERIAL:  
100% Cotton

DESIGNER:  
Raf Simons & Fanny Aronsen

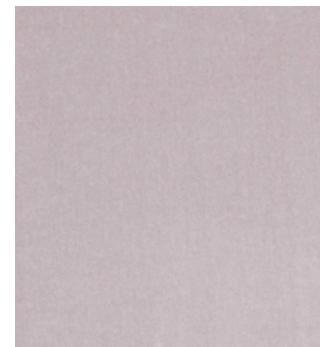
DURABILITY:  
100,000 Martindale



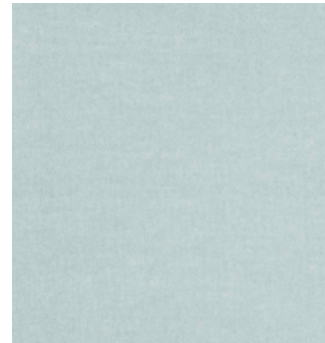
212



143



233



823



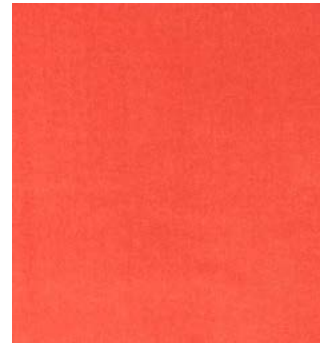
242



283



443



543



182



982

Please note: Harald is not available in the UK.



RANGE

# BYRAM

Byram, designed by Raf Simons, is made with pure kid mohair. Thanks to the satiny sheen of its pile, Byram exhibits beautifully nuanced colour. This luxuriously soft textile is very hardwearing.

**MATERIAL:**  
100% Kid mohair

**DESIGNER:**  
Raf Simons

**DURABILITY:**  
70,000 Martindale

DE LA ESPADA



131



471



161



361



971



RANGE

## BALDER 3

Designed by Fanny Aronsen and Raf Simons, Balder is woven from several different tones of thread creating subtle fluctuations in colour across the surface of the fabric. It is extremely hardwearing.

### MATERIAL:

68% New wool

26% Cotton

6% Nylon

### DESIGNER:

Raf Simons & Fanny Aronsen

### DURABILITY:

100,000 Martindale

DE LA ESPADA



612



132



192

B

RANGE

## SUNNIVA 3

Designed by Fanny Aronsen and Raf Simons, this fabric combines two tones of wool, woven in a fine, flat, tweed-like pattern with a glossy top note.

### MATERIAL:

58% New wool

25% Viscose

8% Linen

5% Nylon

4% Polyester

### DESIGNER:

Raf Simons & Fanny Aronsen

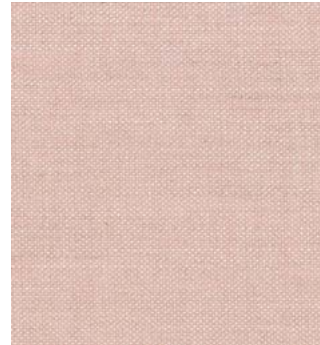
### DURABILITY:

50,000 Martindale

DE LA ESPADA



811



236



717



132



152



RANGE

# CLAY

Clay, designed Vincent Van Duysen, features mixed colours of yarn in warp and weft for a unique structured surface. The fabric is elegant yet casual.

**MATERIAL:**

76% Linen

21% Cotton

3% Polyester

**DESIGNER:**

Vincent Van Duysen

**DURABILITY:**

45,000 Martindale

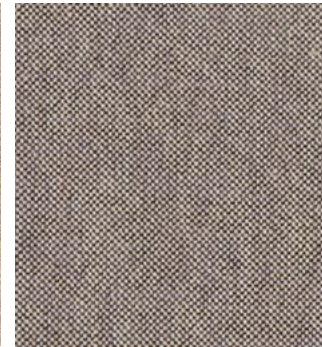
DE LA ESPADA



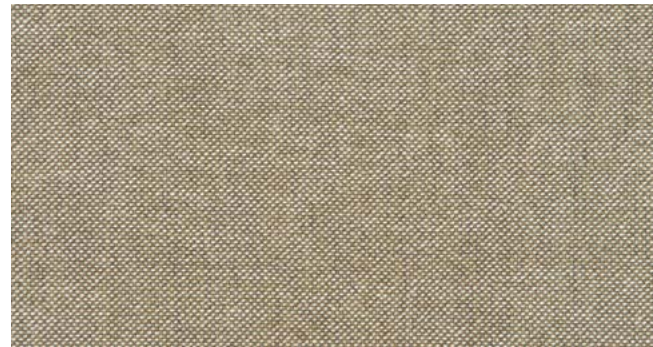
011



010



009



015



005



002



RANGE

# NARA

This classic upholstery has a plain weave in viscose and linen chenille that provides a distinctive textured appearance. The rich and soft textile has a lively and natural surface.

**MATERIAL:**

50% Linen

35% Cotton

15% Viscose

**DESIGNER:**

Sahco

**DURABILITY:**

60,000 Martindale

DE LA ESPADA



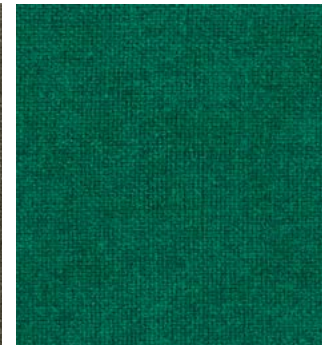
001



003



005



013



007



RANGE

# VIDAR 3

Woven from bouclé yarns with a regular loop size, Vidar has a large-grained texture, a gentle satin surface finish, and great depth. Designed by Raf Simons and Fanny Aronsen, it is extremely hardwearing at 100,000 rubs Martindale.

**MATERIAL:**

94% New wool  
6% Nylon

**DESIGNER:**

Raf Simons & Fanny Aronsen

**DURABILITY:**

100,000 Martindale

DE LA ESPADA



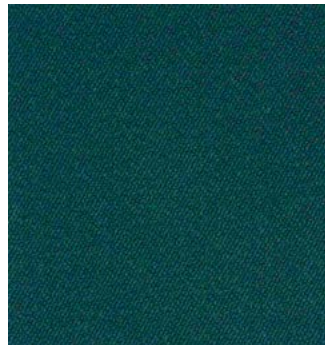
152



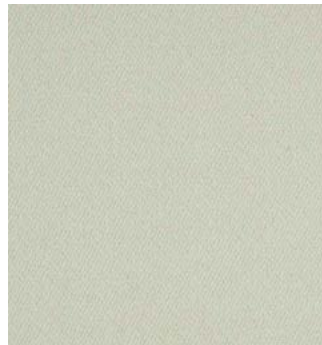
1880



943



1062



1511



222



# MOSS

DE LA ESPADA

Moss was designed by Vincent Van Duysen, inspired by his own home interior. The mixture of twisted yarn and chenille gives the fabric surface a unique structure and a soft handle.

## MATERIAL:

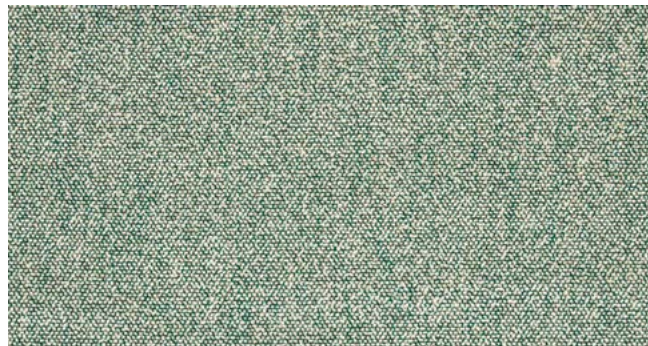
52% Cotton  
22% Viscose  
14% Acrylic  
6% Linen  
3% Nylon  
3% Polyester

## DESIGNER:

Vincent Van Duysen

## DURABILITY:

50,000 Martindale



003



021



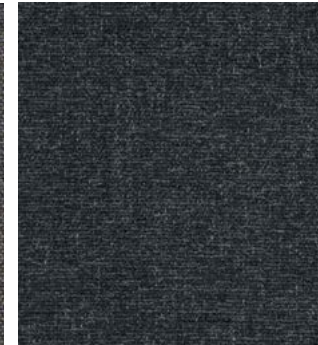
005



006



007



008



004



011



015



016



RANGE



# SAFIRE

Safire has a subtle handwoven appearance. The thick bouclé and chenille yarns contribute to its wooly soft handle and create a vibrant two-tone effect.

## MATERIAL:

43% Viscose  
17% Acrylic  
15% New wool  
9% Cotton  
8% Linen  
8% Polyester

## DESIGNER:

Sahco

## DURABILITY:

40,000 Martindale

DE LA ESPADA



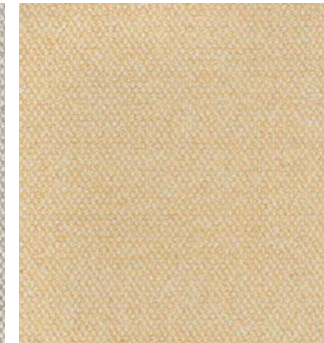
004



007



008



015



010



009



RANGE

# ZERO

Influenced by Parisian couture clothing, Zero is an elegant and irregular bouclé upholstery textile. The pearl effect yarn is used in both warp and weft for a sophisticated appearance. It is very hardwearing at 70,000 rubs Martindale.

## MATERIAL:

65% Cotton  
20% Acrylic  
15% Polyester

## DESIGNER:

Sahco

## DURABILITY:

70,000 Martindale

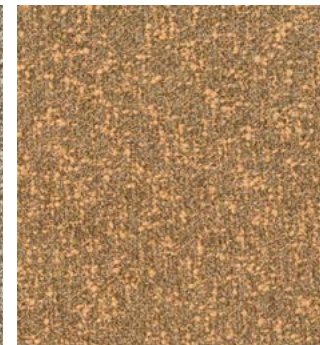
DE LA ESPADA



001



002



003



012



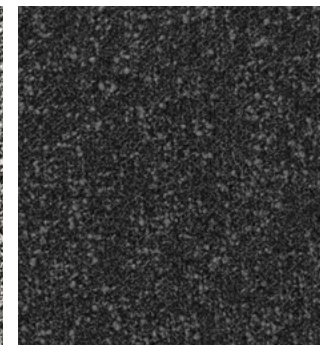
005



008



004



013



RANGE

# ATOM

Atom is a vibrant and experimental bouclé fabric with no visible repeat. It is inspired by fragments of pointillist landscapes in expressionist paintings. The textile features speckles of colour that seem randomly scattered across its surface. This textile, designed by Raf Simons, is very hardwearing at 65,000 rubs Martindale.

## MATERIAL:

90% New wool (worsted)

8% Nylon

2% Polyester

## DESIGNER:

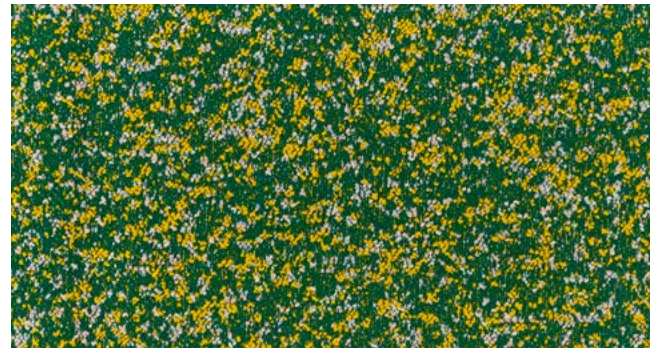
Raf Simons

## DURABILITY:

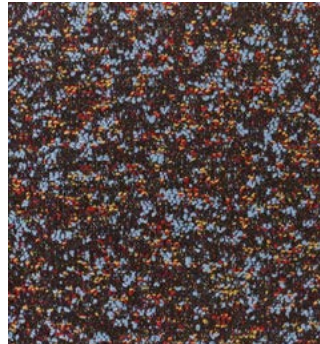
65,000 Martindale



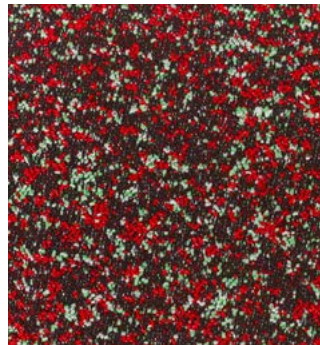
124



964



774



574

DE LA ESPADA



RANGE

# SONAR 3

Inspired by the fine suiting tweeds used in high-end fashion garments, Sonar, designed by Raf Simons, features a complex mix of colours and textures.

**MATERIAL:**

- 59% New wool
- 25% Viscose
- 9% Linen
- 5% Nylon
- 2% Polyester

**DESIGNER:**

Raf Simons

**DURABILITY:**

20,000 Martindale



113



684



173



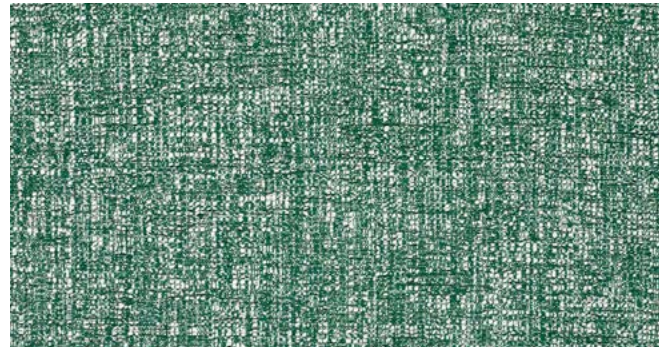
773



153



934



974



# REED

Reed has a small, graphic design created by interweaving yarns of two contrasting colours. The linen gives the fabric a grainy textured appearance. The textile is extremely hardwearing at 80,000 rubs Martindale.

## MATERIAL:

56% Cotton  
26% Viscose  
18% Linen

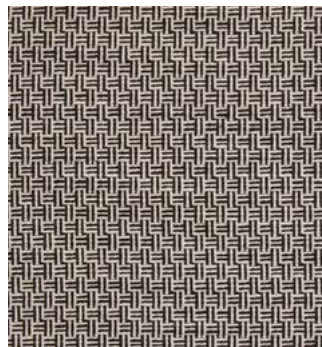
## DESIGNER:

Sahco

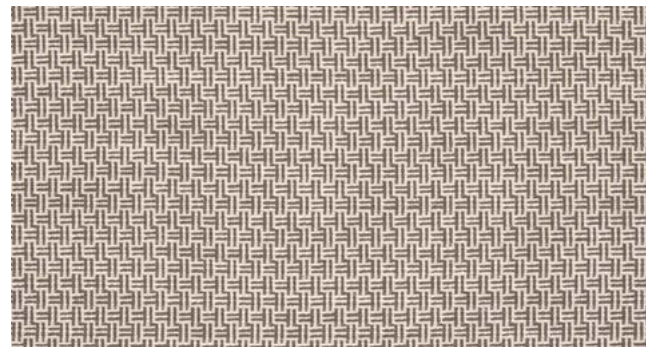
## DURABILITY:

80,000 Martindale

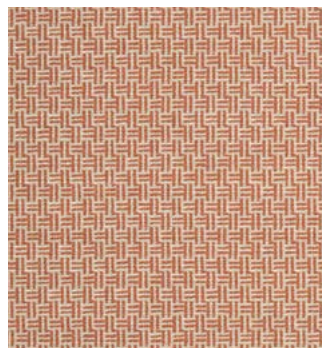
DE LA ESPADA



006



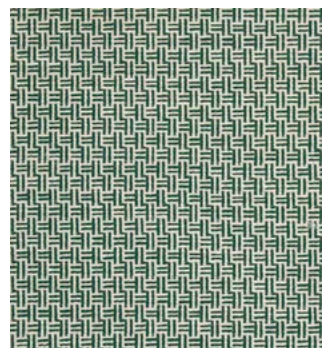
008



003



007



001



RANGE

# JADE

Jade combines a soft, matte chenille yarn and smooth, shiny polyester in the warp and weft. An irregular chequerboard design creates an embossed effect.

**MATERIAL:**

45% Cotton  
30% Viscose  
25% Polyester

**DESIGNER:**

Sahco

**DURABILITY:**

20,000 Martindale

DE LA ESPADA



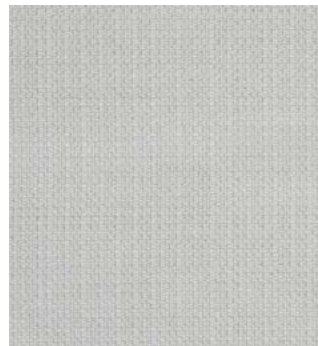
001



002



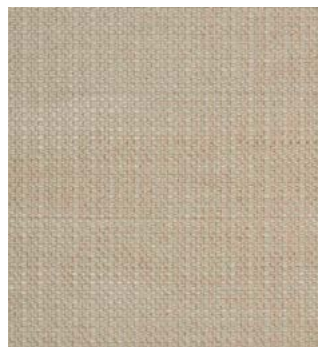
005



003



007



016



RANGE

# FUSE

Fuse, a textile designed by Raf Simons, has ribbed stripes woven in stitch-like patterning that slightly blends the two colours in the textile. Fuse is extremely hardwearing at 100,000 rubs Martindale.

## MATERIAL:

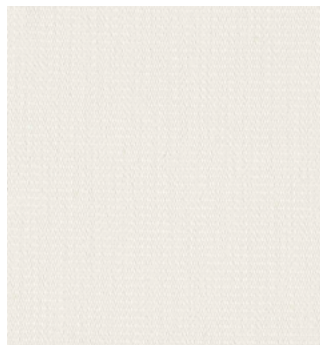
65% New wool (worsted)  
23% Cotton  
8% Viscose  
4% Nylon

## DESIGNER:

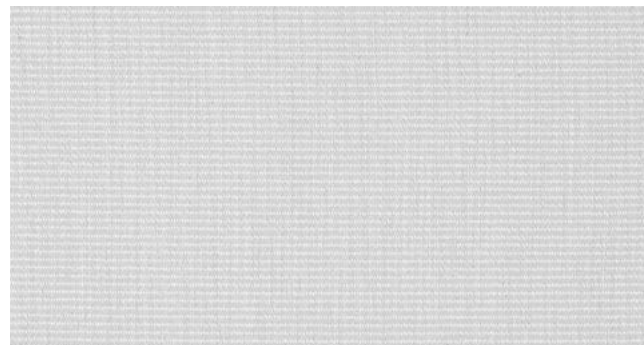
Raf Simons

## DURABILITY:

100,000 Martindale



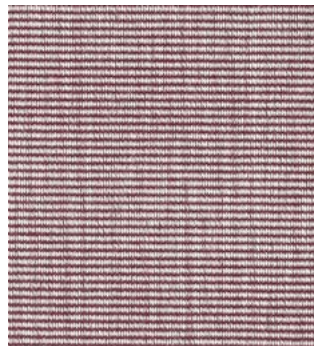
111



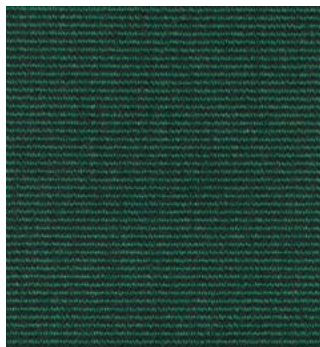
121



131



631



981



## NATURAL GRAIN LEATHER

The natural grain of this finished cow hide leather is preserved, the surface lightly buffed. Natural grain variations lend each piece individuality and character.



BROWN



BLACK

DE LA ESPADA

B

RANGE



## ELMORUSTICAL VIII

DE LA ESPADA

An aniline leather from Scandinavian cattle, Elmorustical is soft and natural, offering outstanding comfort. This full grain leather maintains the distinct features of the natural hide, lending each piece individuality and character.

Please note that when using Elmorustical to upholster expansive surfaces such as the headboard of a bed, our craftspeople will use their discretion to ensure the natural variations in the colour and grain are most elegantly displayed. This may mean adding a stitch line to the surface.



22679



93287



91089



99991



RANGE

# CORRECTED GRAIN / FINISHED LEATHER

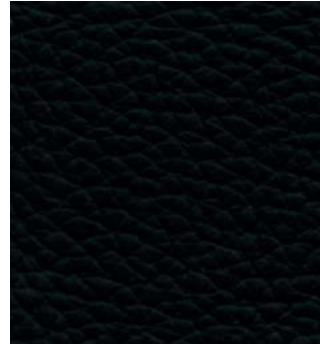
Our finished leather is soft, supple, and hardwearing. A corrected grain leather, it is water resistant and easy to clean making it suitable for a wide range of applications. The natural cow hide undergoes a retannage process in addition to being treated with technically advanced finishing formulas to create a protective barrier against spillage and staining.



IVORY



FOG



LIQUORICE



DUNE



CHAI



CHOCOLATE



## CURLY SHEEPSKIN

Our curly wool sheepskin is durable and luxuriously soft. The 12mm wool height provides sumptuous depth while allowing for clean contours on our upholstered furniture. The visual depth is enhanced by the subtle variation between the highlighted tips and darker base.

This material is scarce as the hides are small and, while they vary in quality, only the best quality hides are chosen before being expertly stitched together by our supplier in Sweden. This scarcity affects our manufacturing lead time, so products purchased in Curly Sheepskin will always have specially-quoted lead times.

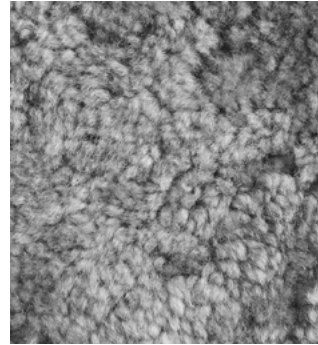
Curly Sheepskin is only available on select products, as it behaves differently from leather and most textiles in terms of elasticity which affects how it is applied to different shapes.

Curly Sheepskin is currently available for the following products:

- Solo Lounge Chair
- Solo Ottoman
- Saia Lounge Chair
- Capo Lounge chair
- Capo Lounge Armchair
- Elysia Lounge Chair
- Nino Ottoman



MOHAWI



SCANDINAVIAN GREY

