

NICHETTO

DE LA ESPADA



LUCA NICHETTO

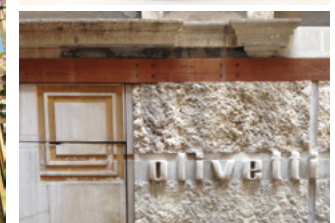
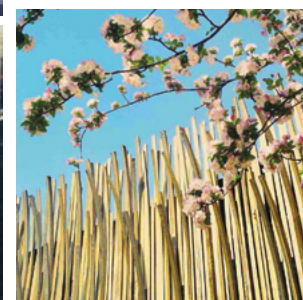
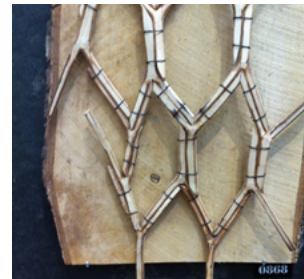
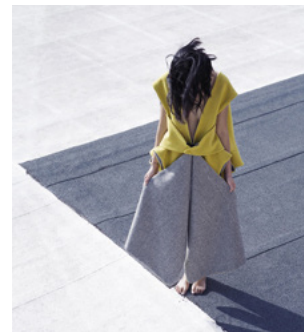
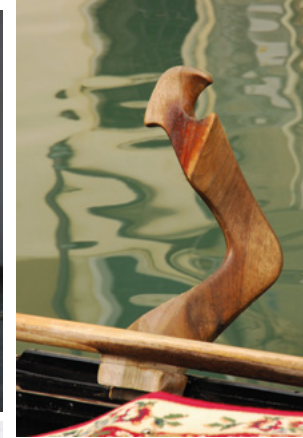
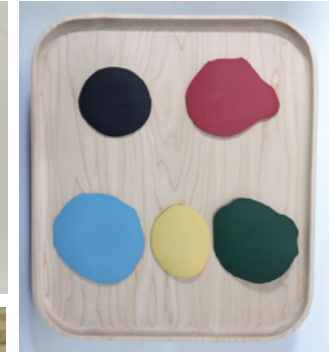
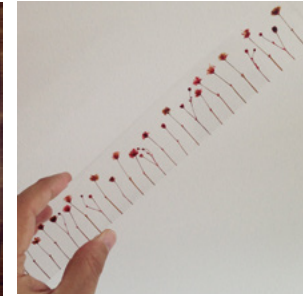
Luca Nichetto is an acclaimed Italian designer with offices in Venice and Stockholm.

His work is informed by his collaborative approach to design and deep respect for craft across all disciplines. For his furniture line, 'Nichetto', he creates products with personality, distinction and versatility for residential and contract interiors. The pioneering yet classical forms highlight the unique characteristics of the premium materials and superior craft.

De La Espada works closely with Luca Nichetto, realising the studio's creative vision through elegant materials, exquisite craftsmanship and meticulous detailing. At the De La Espada factory in Portugal, expert craftspeople optimise the beauty and integrity of every product.

### MOODBOARD

Hailing from the Venetian island of Murano, home of world-renowned glass makers, Luca Nichetto has a natural affinity for the art of craft and the power of colour. He draws inspiration from the textures and colours of nature and craft techniques from a range of disciplines including fashion, carpentry, and fine art.





Reflected in each of the products is the influence of the great American architects of the 1950s, Scandinavian design, and Italian postmodernism, which translates into a classic aesthetic where luxury is revealed in the details.

Nichetto designs intentionally highlight the expert craftsmanship of De La Espada through natural finishes, complex forms, exposed frames, and intricate upholstery.





Dubois is a bed system with a wraparound headboard providing a sense of privacy. An exposed timber frame and generous expanse of upholstery celebrate the quality of materials and craft. Designed to be suitable for residential or contract environments, the bed is available with a low or tall headboard, with or without integrated bedside tables.





113 DUBOIS BED, LOW HEADBOARD (NO BEDSIDES)







102L STANLEY 3-SEATER SOFA



Belle Reeve, a sofa system with seemingly endless possibilities, has a deep, low body and intricately crafted solid wood lattice panels on the backrests. Different arm and table options combine with the seat modules to break the symmetry of this versatile sofa, allowing for personalised configurations.



122 12R BELLE REEVE SOFA, CORNER UNIT RIGHT HAND

"It was kind of a melting pot of different references: one coming from the DNA of [De La Espada] the wooden work; plus Italian comfort; with a clear idea to do something that is in a way customised by the customer because you can create different compositions."

Luca Nichetto







122 06R BELLE REEVE LONG SOFA WITH ONE ARM + FLAT ARMREST - RIGHT HAND



103LM LAUREL COFFEE TABLE IN MARBLE



103SM LAUREL SIDE TABLE IN MARBLE





Elysia Lounge Chair exemplifies Luca Nichetto's approach to his partnership with De La Espada, as a perfect synthesis of superior woodworking and fine tailoring. The exposed frame showcases the craftsmanship and premium timber, while the exceptional comfort is visually communicated through the padding enveloping the shell, and the generous folds of fabric on the cushions.

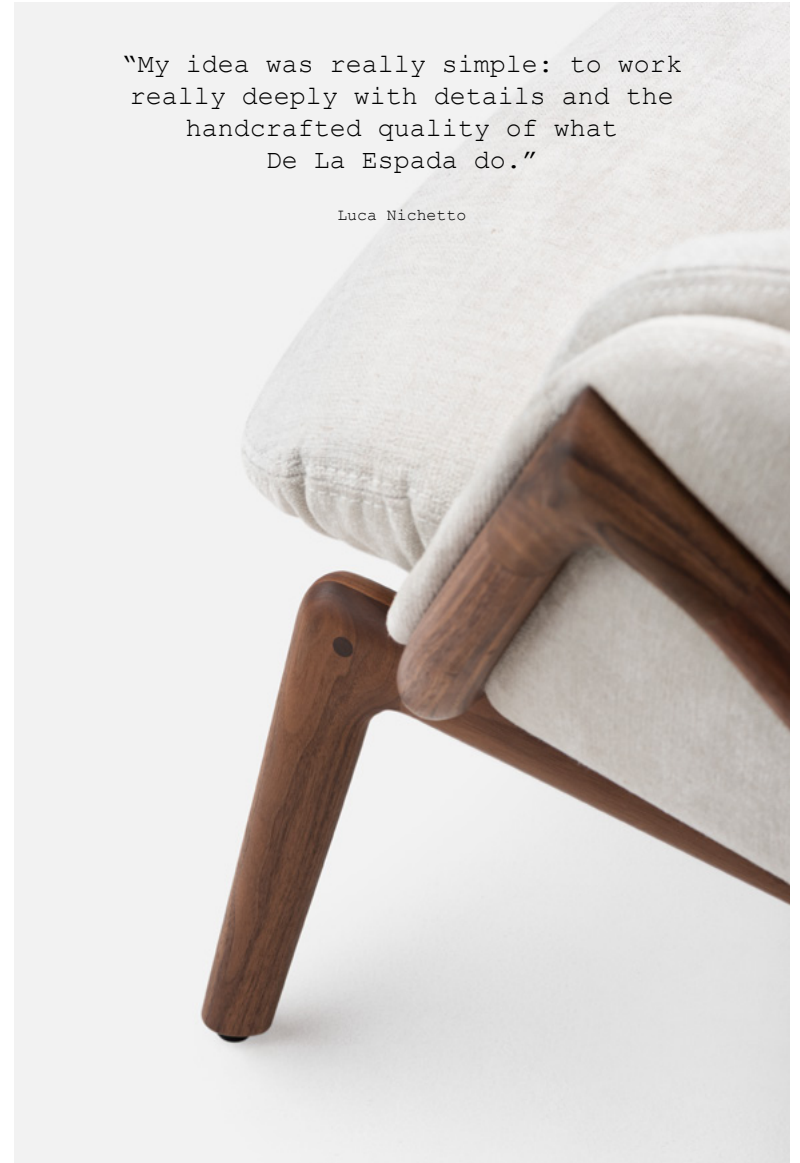






"My idea was really simple: to work  
really deeply with details and the  
handcrafted quality of what  
De La Espada do."

Luca Nichetto





105 BLANCHE BERGERE





109S MITCH LOW CABINET

Mitch cabinet has a lightweight appearance that belies the robust structure. Inspired by traditional Venetian doorbells, burnished brass is used for the door pulls, a nod to the designer's heritage.



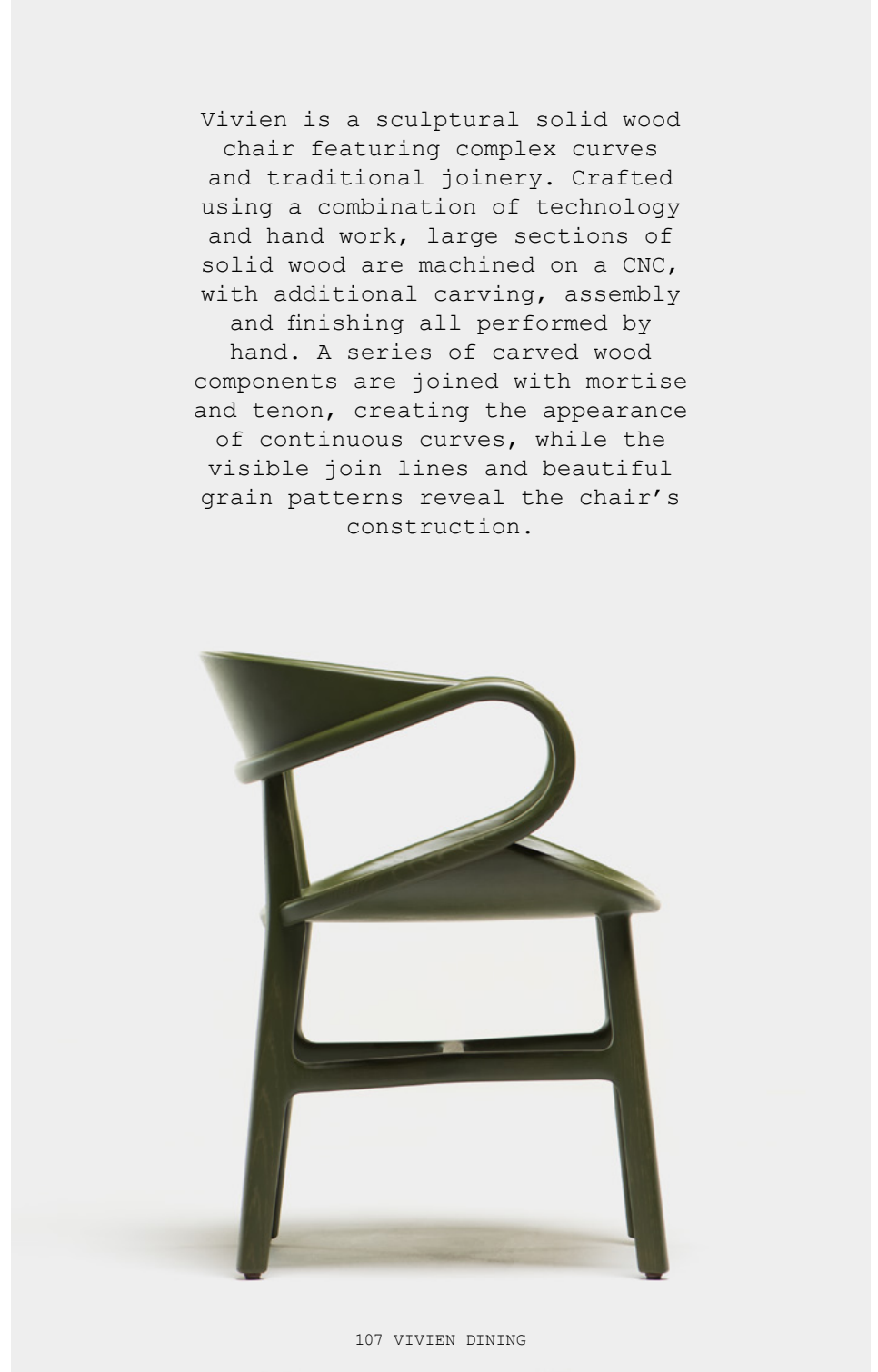


106 HAROLD DESK



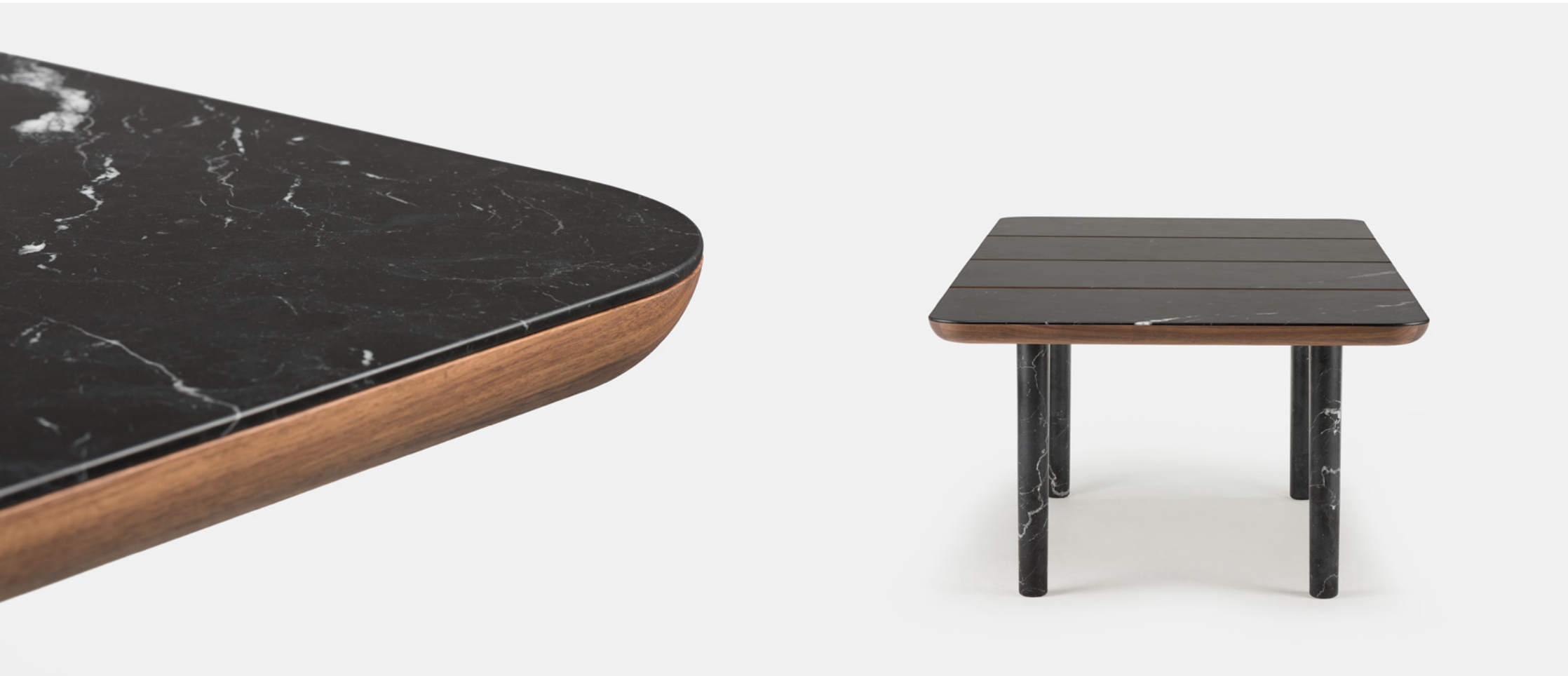


Vivien is a sculptural solid wood chair featuring complex curves and traditional joinery. Crafted using a combination of technology and hand work, large sections of solid wood are machined on a CNC, with additional carving, assembly and finishing all performed by hand. A series of carved wood components are joined with mortise and tenon, creating the appearance of continuous curves, while the visible join lines and beautiful grain patterns reveal the chair's construction.





108ML MARLON RECTANGULAR TABLE - MARBLE TOP AND TIMBER LEGS



108ML MARLON RECTANGULAR TABLE - MARBLE TOP AND LEGS

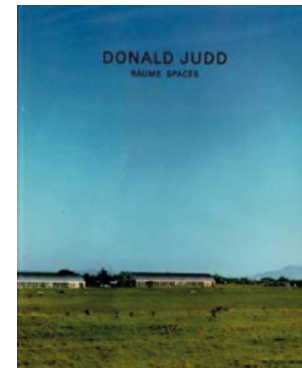


"We can achieve a kind of work [with De La Espada] that we aren't doing with any other company that I am working with. With many companies we are thinking about a product and with De La Espada it is more thinking about a complete feeling."

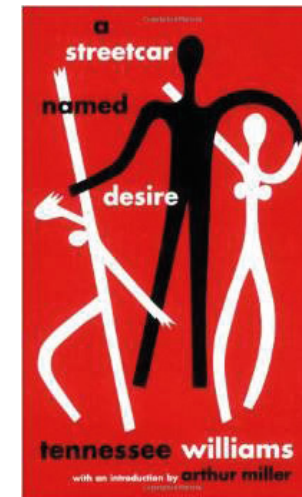
Luca Nichetto

INSPIRING BOOKS

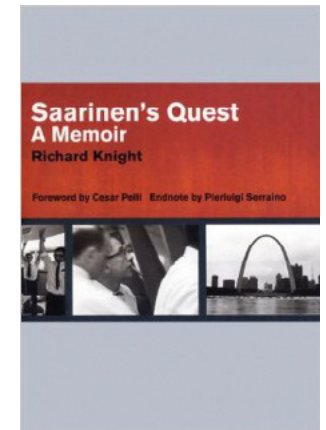
Luca Nichetto finds inspiration in numerous places, including fine art, architecture, fashion, theatre, craft, and the written word. He is drawn to authenticity, humour, considered artistry, and the human experience.



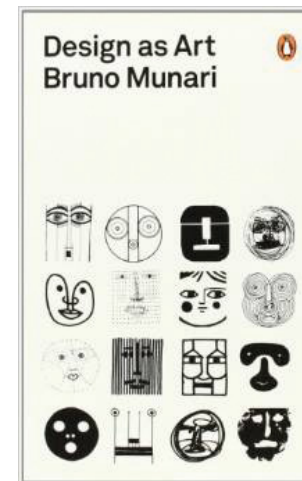
Chinati: The Vision of Donald Judd



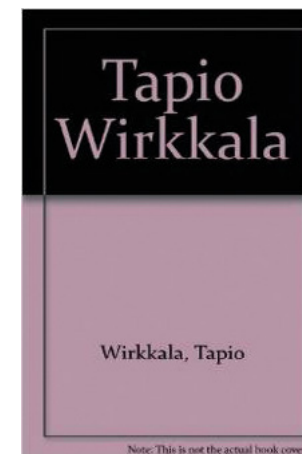
A Streetcar Named Desire



Saarinen's Quest: A Memoir



Bruno Munari: Design as Art



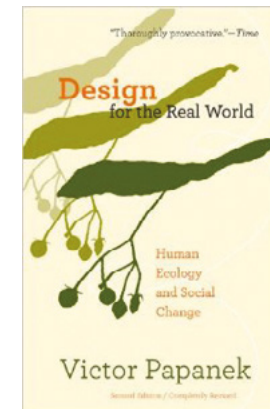
Note: This is not the actual book cover.



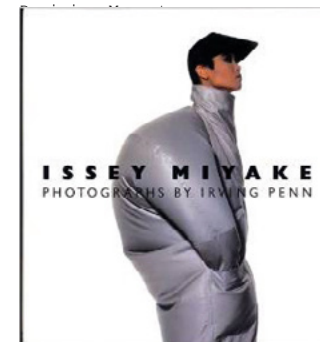
Henry Cartier-Bresson: The



The Vignelli Canon By Massimo Vignelli



Design for the Real World: Human Ecology and Social Change



Issey Miyake by Nicholas Callaway



photography credit  
Portrait by Lera Moiseeva

DE LA ESPADA

DE LA ESPADA

SALES@DELAESPADA.COM

DELAESPADA.COM