

NERI & HU

DE LA ESPADA



NERI & HU

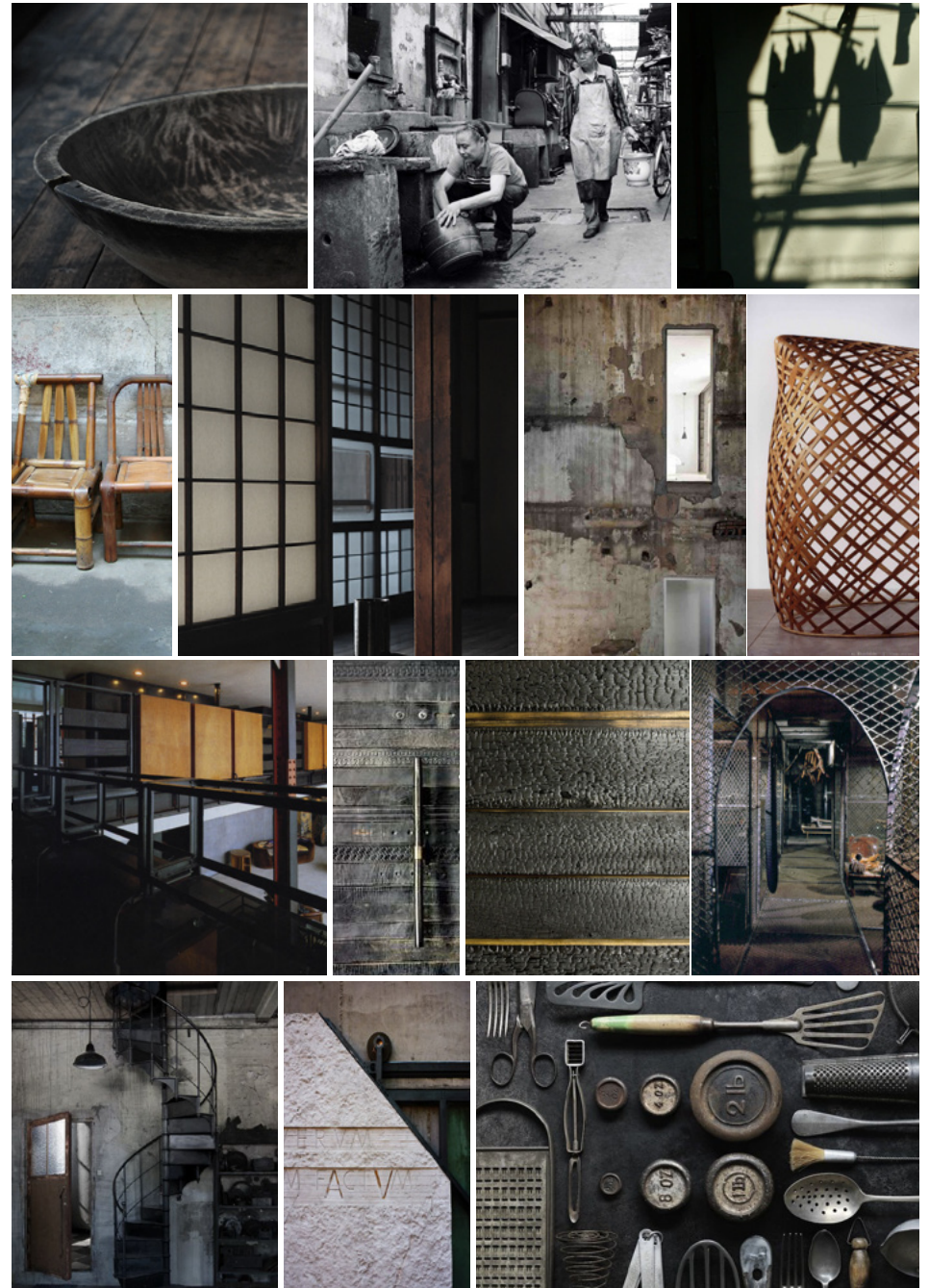
Neri&Hu is an inter-disciplinary award-winning architectural design practice based in Shanghai, China, with an additional office in London. With their product line, 'neri&hu' they seek alternatives to the normative, questioning the potential in "Chinese design." neri&hu is the reinterpretation of the beauty in the raw material, changing perceptions through what is revealed, examining history and its path, or capturing an ordinary scene in a snapshot.

De La Espada works closely with Neri&Hu, realising the studio's creative vision through elegant materials, exquisite craftsmanship and meticulous detailing. At the De La Espada factory in Portugal, expert craftspeople optimise the beauty and integrity of every product.

MOODBOARD

Shanghai lane houses, with their scenes of daily life, their shadows, textures, and sense of voyeurism, are a source of inspiration for Neri&Hu.

The designers examine history and culture through raw materials, common behaviours and ancient typologies.



"We're designing it in China and having it made in Portugal. Why? Because it's really just the best craft we've seen so far. What we're saying is that China needs to step out there and show the world that we can also design and create."

Neri&Hu



766MBL + 766MCL FRAME CORNER UNIT SOFA





766LA FRAME LONG SOFA



754SB TRIO SIDE TABLE- BRASS TOP



754SP TRIO SIDE TABLE- COPPER TOP



754O TRIO OVAL COFFEE TABLE



Lyndon Neri and Rossana Hu, both Chinese by heritage, were born and raised in different parts of Asia. Their architectural education in the United States provided a global language that they combine, in their design work, with local Chinese culture.




754MM TRIO ROUND COFFEE TABLE



764M SHAKER DINING TABLE - MARBLE TOP & 763 SHAKER DINING CHAIR



764RM SHAKER ROUND DINING TABLE



Neri&Hu's work carries an imprint of heritage with a modern reinterpretation. Their work often evokes shapes from ancient or traditional Chinese furniture design, but with a new and more abstract form.

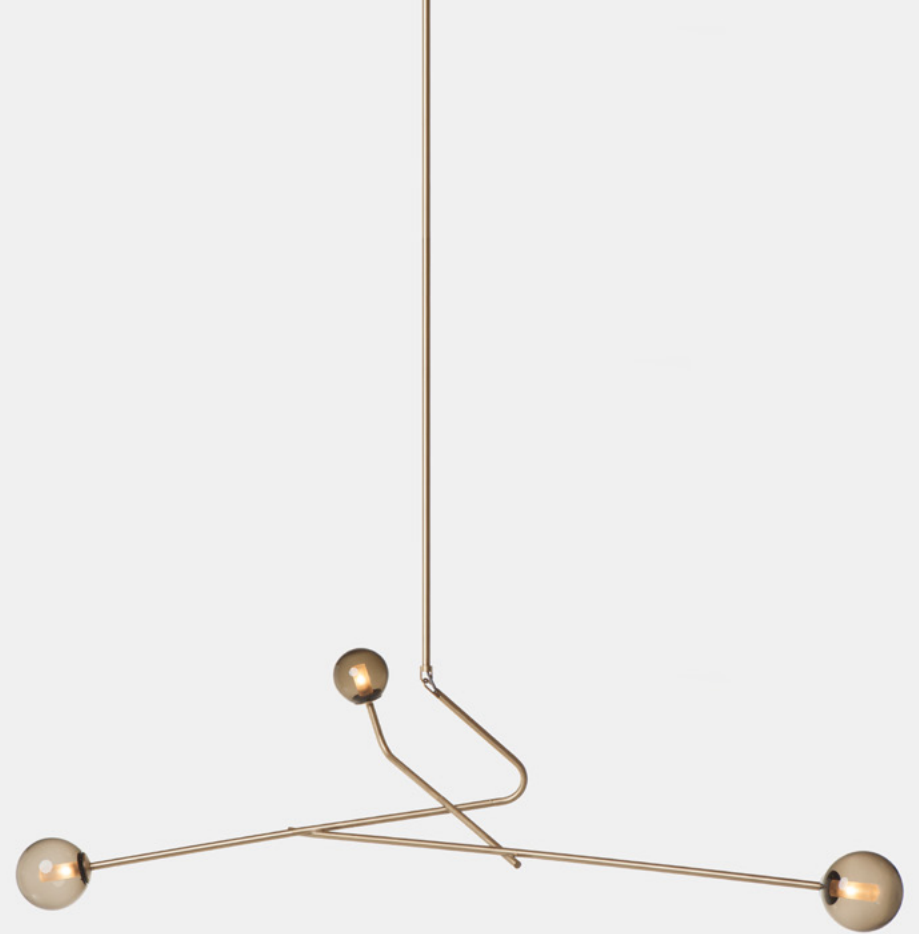
Trunk Cabinets carry echoes of ancient China, when a bride and groom would be given trunks as gifts at their wedding, and bring these trunks, full of personal items, into their new home.



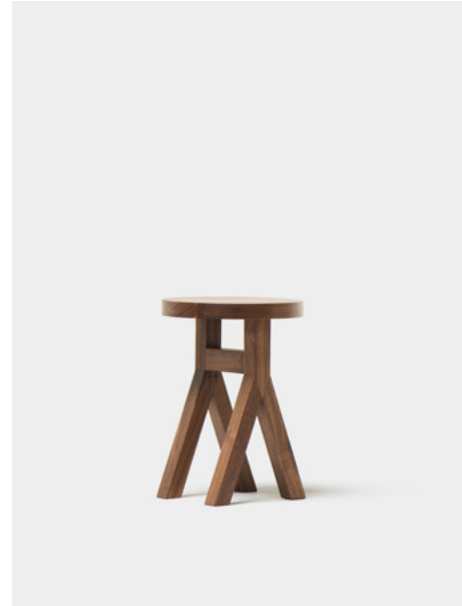
759L TRUNK TALL CABINET



759S TRUNK LOW CABINET




Neri&Hu takes emblems, signs and symbols, and plays with their scale to create abstraction and a new way of seeing. Lattice is a light with a form inspired by the lattice work found on traditional Chinese screens. Neri&Hu took a section of a traditional pattern, altered its scale and reinterpreted its form in solid brass with hand-blown coloured glass globes.



770 COMMUNE STOOL

771 COMMUNE BENCH

A tall, minimalist wooden ladder frame stands on the left side of the image. It consists of two vertical posts connected by two horizontal rungs. To its right is a small, round wooden stool with three legs. The background is a plain, light gray wall and floor.

The Extend Mirrors are an abstraction of the common bamboo ladders used as household objects inside and outside country homes in China. These mundane ladders functioned as an ever-ready stand for hanging a wide variety of things from tools and clothes to dried food. A Chinese ladder is a reflection of its owner, revealing information about them based on how they choose to use it.

As a tribute to this utilitarian household symbol, Neri&Hu used three different ladder proportions to make a set of solid hardwood frames for floor standing mirrors – literal reflections of the user.



785 SOLO CABINET

"The rawness of material is something we like to explore. De La Espada really understand wood and the way they work with wood it really feels like wood."

Neri&Hu



784 SOLO DESK



Neri&Hu enjoy exploration, and do not exclusively work with Chinese typologies. They have always had enormous respect for Charles and Ray Eames and their approach to multidisciplinary design. The Solo Series is an homage to Eames, and an interpretation of what they might have designed 50 years later.



783 SOLO OBLONG TABLE & 750 SOLO DINING CHAIR



750 SOLO DINING CHAIR





751 SOLO LOUNGE CHAIR



750L SOLO SOFA





787 SOLO BED





790 HANDLE SIDE TABLE

The Frame series explores the architectural concept of tectonics, celebrating the art of construction. A single frame serves all the needs of the product including a base, legs, decorative feature, and even practical support for accessories including trays. Made from solid wood, the frame's appearance reveals clearly how it is constructed through the visible joinery details.



768 FRAME BED WITH ARMS





780S CAPO DINING ARMCHAIR



The Capo series was initially designed for the Italian restaurant Capo in Shanghai, where the interior design concept was based on a basilica. The chair series takes on the qualities of heritage found in the restaurant design, the modern form enriched with tailoring details that evoke old-world sensibilities.



780 CAPO DINING CHAIR



781S CAPO LOUNGE ARMCHAIR



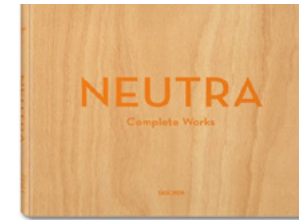
788MA SOFA EIGHT

INSPIRING BOOKS

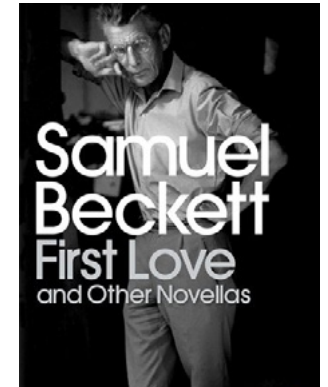
Neri&Hu have a deep appreciation for the work of Charles and Ray Eames and their boundless exploration into numerous aspects of design and art. They value architects including Peter Zumthor, Richard Neutra, and Carlo Scarpa who design with sensitivity to the context and history of each project, creating memorable experiences and spaces. The artists and writers who interest Neri&Hu capture something honest about human existence, revealing the hidden or secretive, with narratives that are poignantly autobiographical.



Hiroshi Sugimoro: Dioramas



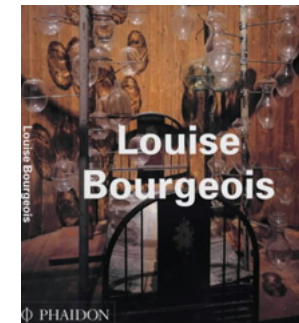
Neutra, Complete Works



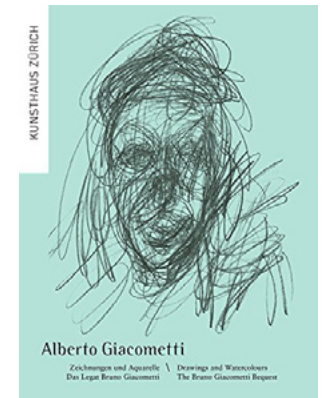
First Love and Other Novellas
by Samuel Beckett



Eduardo Chillida:
Writings



Louise Bourgeois



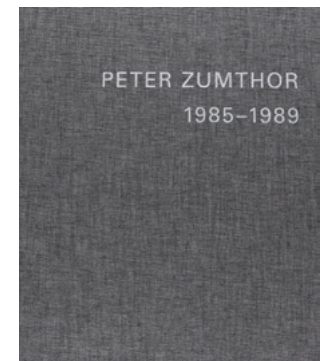
Alberto Giacometti: Drawings
and Watercolours



Carlo Scarpa: Architecture
and Design



Eames



Peter Zumthor

DE LA ESPADA



771 COMMUNE BENCH

photography credit
Portrait by Zhu Hai

SALES@DELAESPADA.COM
DELAESPADA.COM

DE LA ESPADA

SALES@DELAESPADA.COM

DELAESPADA.COM