

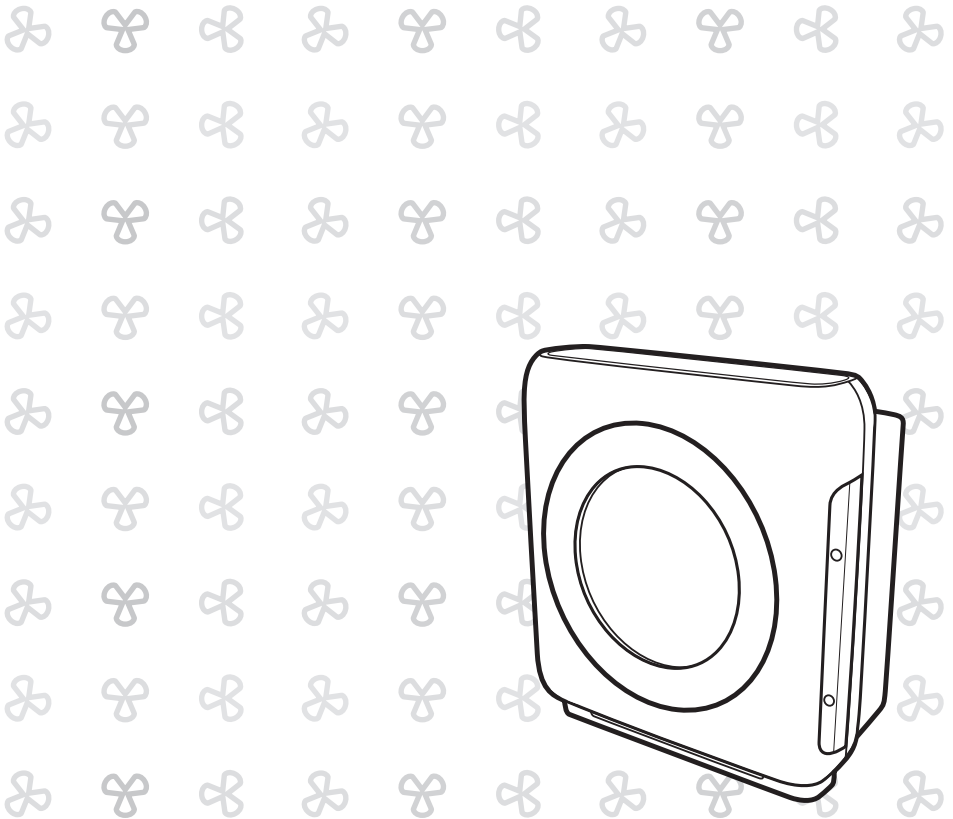


COWAY LOVES THE PLANET
This paper can be recycled.

COWAY

Coway Air Purifier AP-1512HH & AP-1512HH(W)

- This product is for domestic use only. It cannot be used in an overseas country where the power voltage is different.
- Warranty card is included in this user's manual.
- Read and save these instructions.
- English/Français/Español



FEATURES

1. Excellent air purification performance

The True HEPA filter is capable of trapping airborne allergens and contaminants down to 0.3 microns. The unit's filter system has been optimized to remove indoor pollutants fast and effectively.



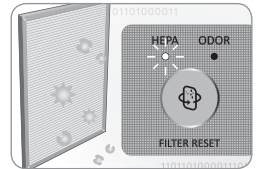
2. Air quality indicator

It shows the indoor air pollution level measured by the dust sensor. The color of air quality indicator changes according to the indoor air pollution level in real time (Blue → Dark Purple → Red).



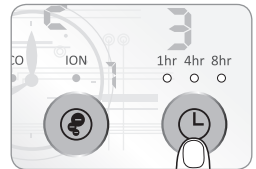
3. Filter replacement indicator

The product checks the filter replacement cycle and turns on the relevant indicator, improving customer convenience with regard to filter replacement.



4. Timer

The timer feature allows you to control how long you want the air purifier to run before automatically powering off.



DEAR CUSTOMERS

Thank you for using the **Coway air purifier**.

Please read the user's manual to use and maintain the product correctly.

If you encounter a problem while using the product, you may easily solve the problem by referring to the user's manual. As this manual contains the product warranty card, please keep it in a safe place.

CONTENTS

FOR INFORMATION

- | 03 | **SAFETY INFORMATION**
 - Danger
 - Warning
 - Caution
- | 07 | **PARTS NAME**
- | 09 | **AIR PURIFICATION PROCESS**

MAINTENANCE

- | 15 | **CLEANING METHOD**
 - Product
 - Filter
- | 17 | **FILTER REPLACEMENT**

HOW TO USE

- | 10 | **BEFORE USE**
 - How to install filter
- | 11 | **INDICATORS AND BUTTONS**
- | 13 | **HOW TO USE**
- | 14 | **ADJUST PARTICLE SENSOR**

OTHERS

- | 18 | **TROUBLE SHOOTING**
- | 19 | **PRODUCT SPECIFICATION**
- | 23 | **WARRANTY**

- Keep your instruction manual in a readily accessible or visible place. -

SAFETY PRECAUTIONS

▲ DANGER : Failing to follow the precautions below may result in serious injury or even death.

- Do not use a damaged power plug or loose electric outlet.
- Please connect the power plug to a dedicated grounded electrical outlet for 120 V, 60 Hz.
- Do not move the product by pulling only the power cord.
- Do not handle the power plug with wet hands.
- Do not forcefully bend the power cord or place it under a heavy object to prevent it from being damaged or deformed.
- Do not repeatedly connect and disconnect the power plug.
- If the electrical outlet is wet, carefully unplug the product and let the electrical outlet dry completely before subsequent use.
- Make sure to unplug the product before repairing, inspecting or replacing a part.
- Remove any dust or water from the power plug.
- Do not plug the product into an electrical outlet or power strip that is being used by several other appliances. Use an electrical outlet dedicated to the product.
- Unplug the system if it is not used for a long time.
- Do not attempt to repair or modify the power cord yourself.
- If the power cord is damaged, do not replace the cord yourself. Call a service center to have it replaced.
- Do not install the product near a heating device.
- Do not install the product in locations exposed to moisture or water (rainwater).
- Do not use the product in areas where flammable gases or combustible materials are used or stored.
- Do not insert sharp objects such as a gimlet into the Air quality sensor.

-
- If the product produces a strange noise, burning smell or smoke, unplug it from the electrical outlet immediately and call our service center.
 - Never place the product in water.
 - Do not spray any flammable materials such as insecticides or air fragrances near or into the air inlet.
 - Do not disassemble, repair, or modify the product at your own discretion.
 - Do not place any containers with water, medicine, food, metallic objects or flammable material on top of the product.
 - Unplug the system before cleaning it.
 - Do not clean by spraying water directly and do not clean the product using benzene or thinner.
 - Use the product for home or business use according to the model.
 - Do not use the air purifier in a factory or industrial setting where machine oil may be present in the air.
 - Do not run cord under carpeting. Do not cover with throw rugs, runners, or similar coverings.
Do not route cord under furniture or appliances. Arrange cord away from traffic area and where it will not be tripped over.

SAFETY PRECAUTIONS

▲ WARNING : Failing to follow the precautions below may result in considerable physical injury or property damage.

- The appliance is not to be used by children or persons with reduced physical, sensory or mental capabilities, or lack of experience and knowledge, unless they have been given supervision or instruction.
- Do not insert fingers or foreign objects into the air inlet or outlet.
- Do not let children hang on to the product or climb on it.
- When removing the front cover, exercise caution that a part of your body or any kind of object does not become stuck in the top part of the product.
- This appliance has a polarized plug (one blade is wider than the other). To reduce the risk of electric shock, this plug is intended to fit in a polarized outlet only one way. If the plug does not fit fully in the outlet, reverse the plug. If it still does not fit, contact a qualified electrician. Do not attempt to defeat this safety feature.
- Do not operate any fan with a damaged cord or plug. Discard fan or return to an authorized service facility for examination and/or repair.
- Do not run cord under carpeting. Do not cover cord with throw rugs, runners, or similar coverings. Arrange cord away from traffic area and where it will not be tripped over.

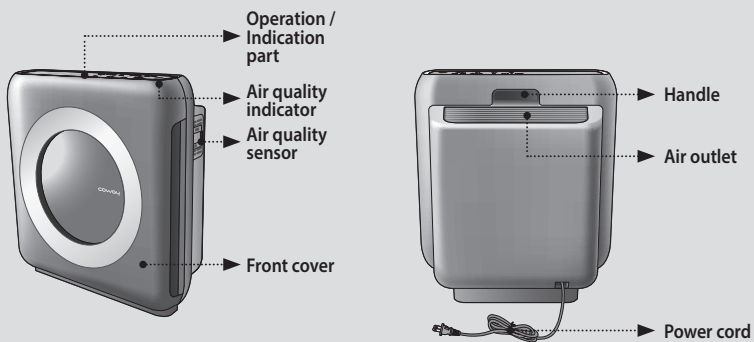
▲ CAUTION : Failing to follow the precautions below may result in slight physical injury or property damage.

- Do not install the product on a sloped surface.
- Do not apply force or impact to the product.
- When the product is in use, maintain a distance of at least 20 cm from the walls or adjacent objects and 30 to 60 cm above the product.
- Install the product so that no obstacles block the circulation of air around the product.
- Install the air purifier away from strong artificial lighting or direct sunlight.
- Install the air purifier at least 2 m away from electronic appliances such as a TV.
- Do not install the air purifier in a location exposed to direct sunlight.
- Replace the filters according to the filter replacement cycles.
- Clean the Pre-filter with water regularly and dry it completely before use.
- Suitable for use with solid-state speed controls.
- Cleaning and user-maintenance, such as lubrication, may result in fire, electric shock, or injury to persons.
- Unplug or disconnect the appliance from the power supply before servicing.

READ AND SAVE THESE INSTRUCTIONS

PARTS NAME

Front / Rear



Operation / Indication part



Air quality indicator



Clean:
Blue



Polluted:
Dark purple



Highly
polluted:
Red

- The quality level of the indoor air can be determined by the color of the round lamp located at the top of the air purifier.

AIR PURIFICATION PROCESS

■ Pre-filter

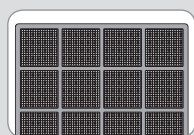
It removes relatively large dust and mold, human hair, pet hair, and so on.

■ Deodorization filter

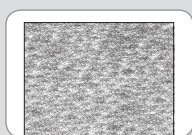
Deodorization Filter is particularly effective at trapping odor and harmful gas to keep your place fresh and odor-free.

■ True HEPA filter

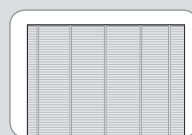
The high-performance composite True HEPA filter effectively removes fine dust and cigarette smoke up to 99.97%.



1. Pre-filter



2. Deodorization filter

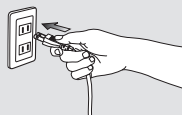


3. True HEPA filter

BEFORE USE

PLEASE CHECK BEFORE USE!

- ⚠ The product is for 120 V~, 60 Hz only.**
Make sure to connect the power plug to a grounded electric outlet (120 V~, 60 Hz) dedicated to the product.



FILTER INSTALLATION

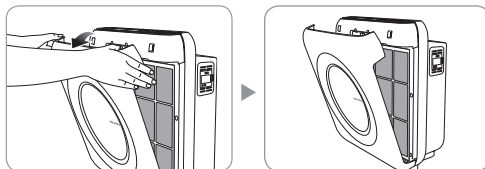


Tips

- Make sure to remove each filter's plastic bag before installing filters.
 - The product is for household use. Use the product indoors only.
 - When the product is not in use, remove the power plug from the electric outlet.
 - When installing filters, check that the front side of filters is in the correct direction.
- ▶ Order of filters : Pre-filter → Deodorization filter → True HEPA filter

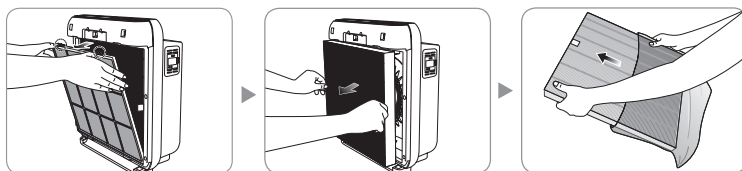
1. Open the front cover.

Open the front cover by pulling the upper part of it.



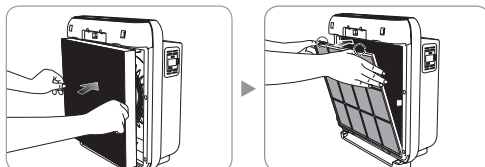
2. Take out filters and remove the plastic bag.

Remove the plastic packing of the filters and install the filters by proper order.



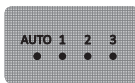
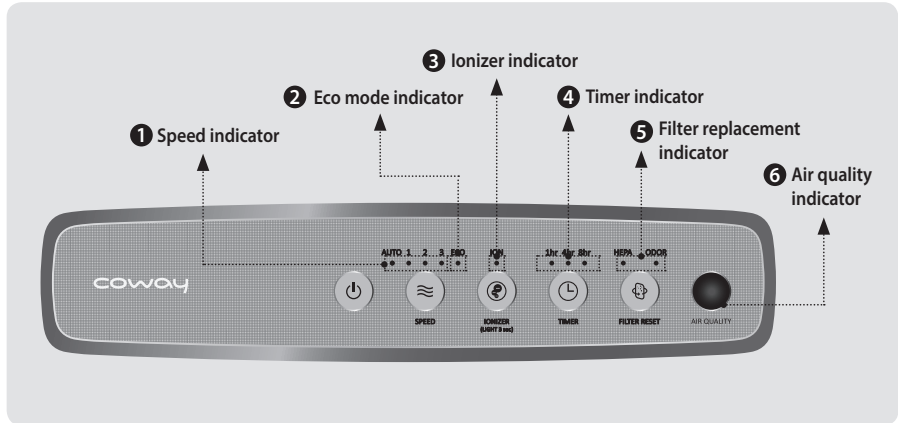
3. Install the filters as following order: Pre-filter → Deodorization filter → True HEPA filter

When you install Pre-filter, make sure to push the grip to install it firmly.



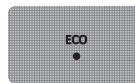
INDICATORS AND BUTTONS

INDICATION PART



1 Speed indicator

It shows the current fan speed. Each indicator is turned on as per its airflow speed.



2 Eco mode indicator

It turns on when Eco mode is activated.



3 Ionizer indicator

It shows whether the ionizer is turned on or off.



4 Timer indicator

It shows the current time setting for air purification. Each indicator is turned on as per its set timer.



5 Filter replacement indicator

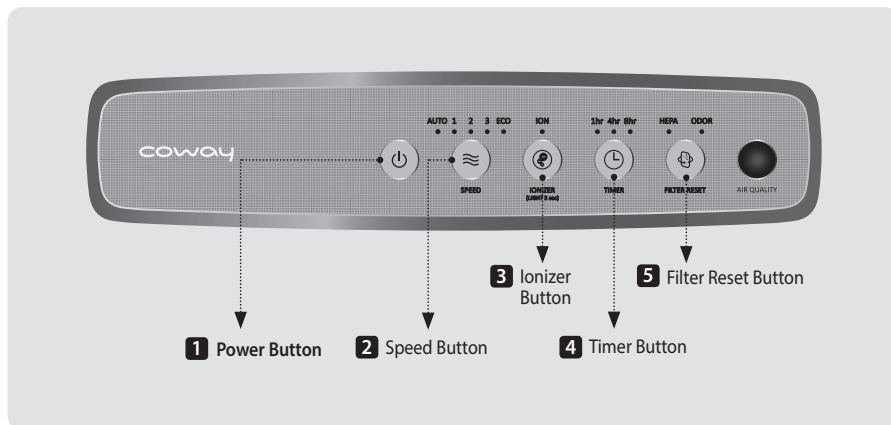
Replace the filter when this indicator is on. Refer to filter replacement cycle for each filter.



6 Air quality indicator

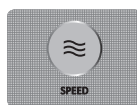
It displays the current pollution level of the room.

OPERATION PART

**1 Power Button**

Use this button to turn the air purifier on or off.

* To power off, press and hold the power button for one second.

**2 Speed Button**

Use this button to adjust the fan speed. Available settings for the fan speed are Auto → 1 → 2 → 3 → ECO.

**3 Ionizer button**

Use this button to turn the ionizer on or off.

* Press and hold the IONIZER button for 3 seconds to turn on or off the air quality indicating light.

**4 Timer Button**

Use this button to turn off the air purifier after a predetermined period of time. Available timer settings are 1H, 4H, and 8H.

**5 Filter Reset Button**

When the filter replacement indicator is turned on, replace the concerned filter and press the RESET button.

HOW TO USE

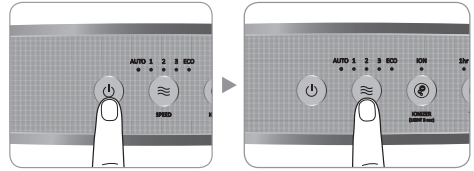


- Before operating the product, connect the power plug to the electric outlet.
- When the air purifier is turned on, it automatically operates in auto mode.

Manual & Auto mode

Press the power button and then select the speed of the fan by pressing the speed button.

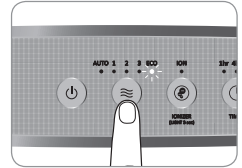
Auto → 1 → 2 → 3 → ECO



To select the auto mode

Press the speed button to activate Eco mode.

Repeat pressing the button until the Eco mode indicator is on.



▶ Auto mode

Automatically optimizes the speed setting 1 through 3 based on the level of indoor air quality detected by dust sensor.

This mode is recommended for general users.

▶ Eco mode

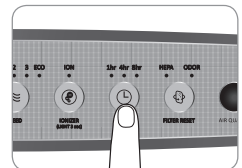
When no pollution is detected for 30 minutes, the fan will automatically stop to save energy consumption. So this special feature will help cut down electricity cost.

Timer activation/deactivation

The Timer feature instructs the air purifier to automatically power off after 1, 4, or 8 hours.

* To deactivate the timer, press and hold the Timer button until the indicator is no longer lit.

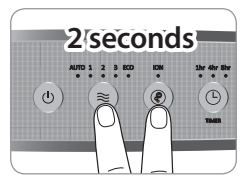
* 1H → 4H → 8H → Timer off



ADJUST AIR QUALITY SENSOR

When the product is shipped out, the air quality sensor is set to standard sensitivity. If the pollution level stays at the highest level after 2 hours of operation or stays at the lowest level for more than 1 hour when the air does not seem clean, users can adjust the sensitivity of the air quality sensor as follows.

1. While the air purifier is on, press the airflow speed button and ionizer button for 2 seconds.



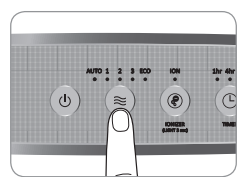
2. The speed indicator will flash at 1.0 second intervals with beep. The speed indicator blinks to show the sensor sensitivity.



3. Adjust the sensitivity by pressing the speed button. The speed indicator blinks to show the sensor sensitivity.

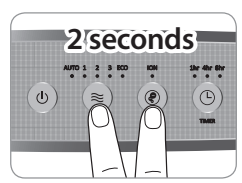
| Speed step 1 | Speed step 2 | Speed step 3 |
|--------------|--------------|--------------|
| Sensitive | Standard | Insensitive |

- * High sensitivity: If the air purifier indicates a pollution level of 1 for longer than one hour when the actual pollution level is higher.
- * Low sensitivity: If the air purifier continues to indicate the highest pollution level even after running the air purifier for more than two hours.



4. Press the airflow speed button and ionizer button for 2 seconds. The air purifier will then resume normal operations.

- * The new setting will also be applied if no button is input for 10 seconds.



CLEANING METHOD

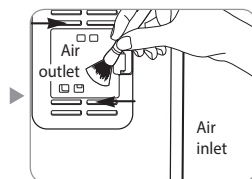
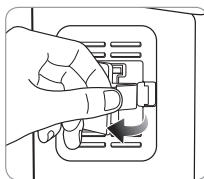


TIPS

- Always unplug the air purifier before cleaning the product.
- Do not use detergents that contain organic solvents (solvent, thinner, etc), bleach, chlorine, or abrasives.
- Do not put the air purifier in water or spray water directly on it.

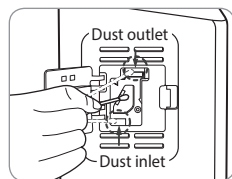
■ Cleaning the air quality sensor (every 2 months)

1. Open the air quality sensor cover on the right-hand side of the product. Clean the air inlet and outlet vent and then the air quality sensor with a soft brush or vacuum cleaner.



2. Wet a cotton swab lightly and clean the lens, dust inlet, and dust outlet. Clean them with a dry cotton swab to remove remaining moisture.

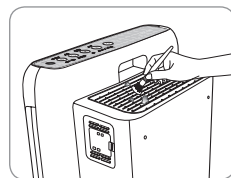
- * Without regular cleaning, the performance of the air quality sensor deteriorates.
- * The cleaning cycle differs depending on the operation environment. When using the product in a dusty environment, clean the sensor more often.



■ Cleaning the air inlet and outlet (every 2 months)

Clean the air inlet and outlet with a soft brush.

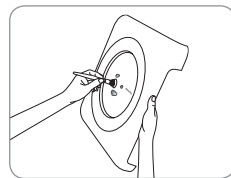
- * Exercise caution not to have dust fall inside the air purifier.
- * If covered in dust, run the air purifier in manual mode for 10 minutes to blow the dust off the vent. You may then continue with normal use.



■ Cleaning the front cover

Separate the front cover from the product and remove the dust attached to the surface with a soft dry brush or cloth.

- * Use lightly wet cloth if the contamination is serious but do not use abrasives.



■ Cleaning the product body (every 2 ~ 4 weeks)

Use dry, soft cloth to clean the product.

- * Use lightly wet cloth if the contamination is serious but do not use abrasives.



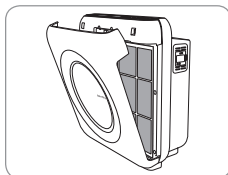
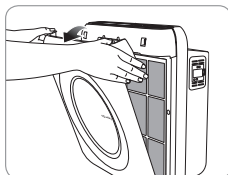


TIPS

- Always unplug the product before cleaning the filter.
- The pre-filter is reusable by removing dust or cleaning it with water.
- If the pre-filter is not cleaned for a long time, the product performance may deteriorate.
- Deodorization filter and True HEPA filter cannot be cleaned and reused.
Never clean them with water.

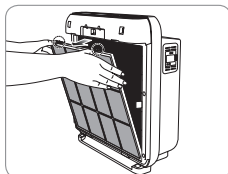
■ Cleaning the pre-filter (every 2 ~ 4 weeks)

1. Open the front cover by pulling out the top part of it.

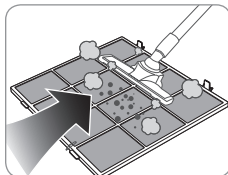


2. Press down on the top clip of the pre-filter and pull it out.

* To prevent dust from falling off, remove the filter carefully without exerting a shock.

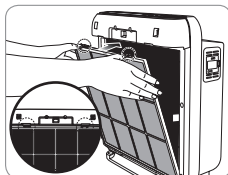


3. Clean the pre-filter with a vacuum cleaner or with water depending on the level of contamination.



4. Install the pre-filter after removing the moisture completely. Fit the front cover back to the product.

* When refitting the pre-filter to the product, fit it in the hook correctly.



FILTER REPLACEMENT



TIPS

- Check that the 'front' side of filters are in the correct direction.
- To maintain optimal performance of the product, use original Coway filters.
- Always unplug the air purifier before replacing filters.

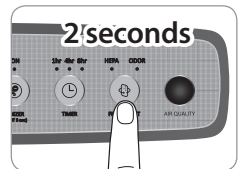
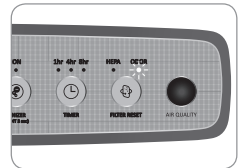
■ Filter cleaning and replacement cycles

| Filter | Cycles | Method |
|----------------------|-----------------|-------------|
| Pre-filter | Every 2~4 weeks | Cleaning |
| Deodorization filter | Every 6 months | Replacement |
| True HEPA filter | Every 1 year | Replacement |

- * Each service life is based on 8-hour use in maximum air speed.
- * The recommended filter replacement cycles may differ depending on the operating environment.

■ Resetting the filter replacement indicator

1. Reset indicator blinks when the filter needs to be replaced.
2. Odor LED : Deodorization Filter
HEPA LED : True HEPA filter
3. The pollution level indicator will not turn on if the filter replacement indicator is activated.
4. After replacing filter, push the Reset button for 2 seconds.



■ Forcible reset mode

When you have replaced a filter before the filter replacement cycle is reached, you can forcibly reset the filter replacement cycle back to the factory default setting.

1. When the reset function is not activated, press and hold the reset button for 2 seconds.
2. Press the reset button to select the desired filter to forcibly reset.
Press once : Odor LED (Deodorization Filter)
Press twice : HEPA LED (True HEPA Filter)
3. After you select the filter to reset, press and hold the reset button for 2 seconds. And then, the accumulated time in electronic time counter is erased.

- * If there is no input for 5 seconds in forcible reset mode, the reset mode is cancelled.

TROUBLESHOOTING

The air purifier may operate abnormally not because of the product malfunction but because of minor causes or the fact that the user is not familiar with the product use. In such a case, problems can be solved easily even without the help from the service center just by checking the following. If the problem still persists after you check the following, contact the service center.

| Problems | Check | Possible solutions |
|---|---|---|
| No air is blowing. | • Is the power cord connected ? | Connect the power cord to an electric outlet for 120 V~, 60 Hz. |
| | • Is the display part all turned off ? | Press the power button and then select the desired function. |
| | • Isn't the power gone out ? | Use the air purifier after the power comes back on. |
| | • Is the front cover closed ? | Close the front cover properly. |
| The airflow speed does not change. | • Isn't it in manual ? | Set the desired operating mode. |
| The airflow speed is significantly weaker than before. | • Isn't the filter cleaning or replacement time passed ? | Check the filter cleaning and replacement cycles and then clean/replace the filter(s) if necessary. |
| A bad smell comes out of the air outlet. | • Isn't the filter cleaning or replacement time passed ? | Check the filter cleaning and replacement cycles and then clean/replace the filter(s) if necessary. |
| The color of the pollution level indicator always stays the same. | • Isn't there dust on the pollution sensor's lens ? | Clean the lens of the pollution sensor. |
| | • Does the pollution level keep indicating a high level ? | Adjust the sensitivity of the pollution sensor to Insensitive or standard. |
| | • Does the pollution level keep indicating a low level ? | Adjust the sensitivity of the pollution sensor to sensitive or standard. |
| When other functional problems are detected. | • Check the symptoms, unplug the product, and ask service center. | |

PRODUCT SPECIFICATION

| Product specification | Air Purifier |
|--------------------------|--|
| Model | AP-1512HH & AP-1512HH(W) |
| Rated voltage | 120 V~, 60 Hz |
| Phase | Single phase |
| Power consumption | 77 W |
| Product insulation grade | Grade 2 device |
| Dust collection method | Mechanical dust collection method (True HEPA filter) |
| Safety feature | Fan motor is shut down when front cover is open. |
| Installation place | Indoor use |
| Maximum volume of air | 268.39 ft ³ /min |
| Size | 16.81 inch(W) x 9.56 inch(D) x 18.30 inch(H) |
| Weight | 12.34 lbs |

► Specifications are subject to change without notice.

MEMO
