

# CRC400-R Assembly Instructions

## Packaged Contents

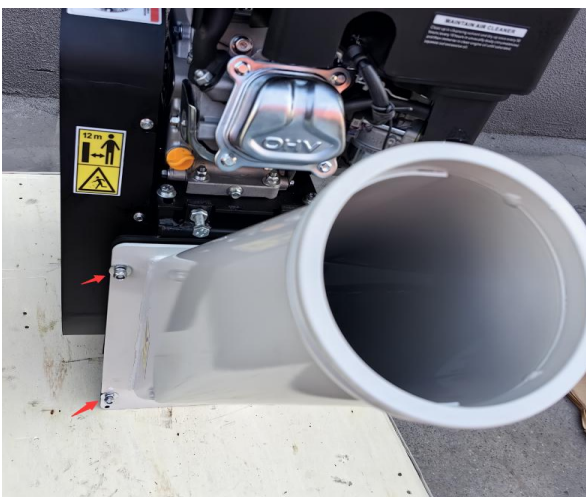


## Outlet chute assembly:

1. Align the hinge of the in-feed hopper and install it.

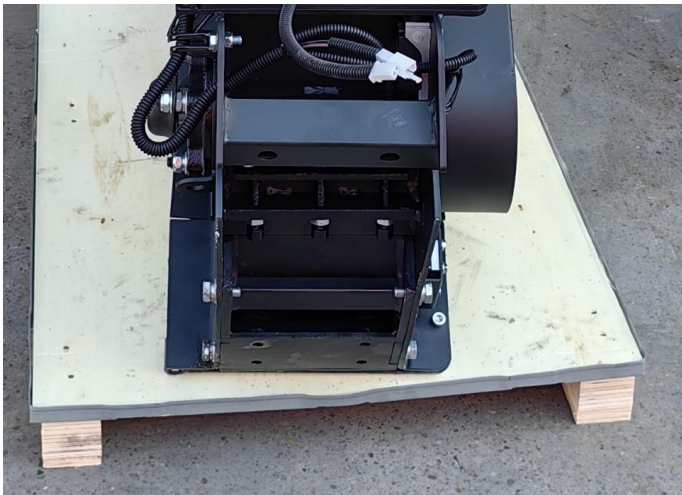


2. Tighten the screw.



## Wheels & axle assembly:

1. Remove the screws from axle first.



Assemble the axle:

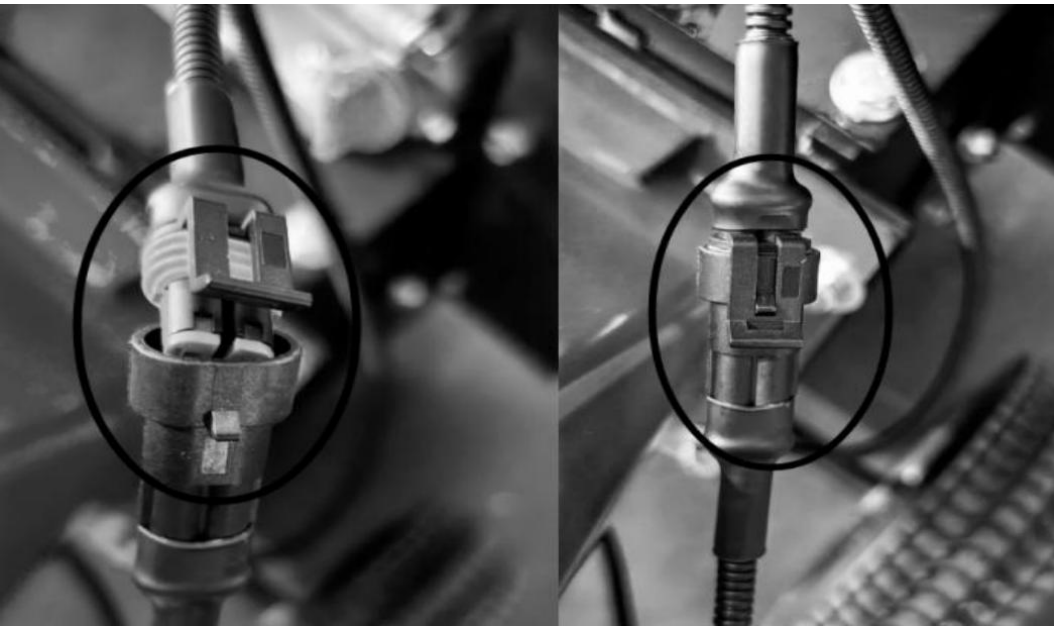


Attach the wheels to the axle, make sure they're in the right direction. Arrows below for reference



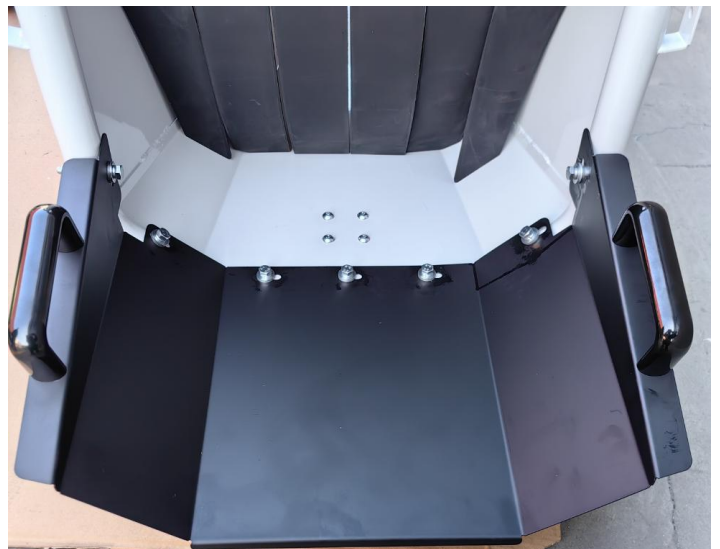


connect the wires from the engine and emergency stop bar.



## Assemble hopper extension:

Step 1: remove all the screw from extension hopper first. The long screw is inside the short screw as below picture. Please align the screws according to their respective positions.



## Inlet chute assembly:

1. Align the hinge of the inlet chute and install it.



2. tighten the screw.



## Emergency stop bar assembly:

Step 1: remove the screws from emergency bar, and install the handle on both sides outside the inlet chute.





Finally, remember to install the split pin.

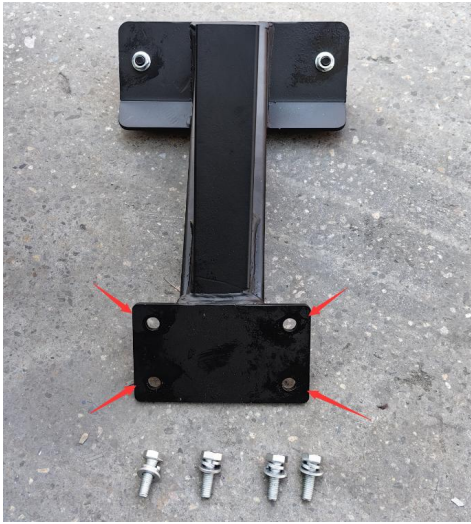


## Stand assembly:

Step 1 : Lay the entire main machine flat first.



Step 2: Remove the screws on the front stand first, The part marked with a red arrow in the picture. Do not use the 4 nuts for this part. The machine already has nuts on it.



Step 3: Tighten four screws on the front stand.



Tow bar Assembly:



Assemble discharge top:

