

# TigerSPC

TigerSPC is a statistical process control caliper set designed to make quality control measurements up to 20 feet long.



**TigerStop<sup>®</sup>**  
fast and accurate...every time



# Fast and Accurate Statistical Process Control Calipers

TigerSPC can be equipped with a selection of both standard and custom attachments allowing it to be specifically configured for your set of critical quality control measurements.

## Attachments

With a variety of snap in jaws, including Miter Jaws, Mullion/Muntin Half Lap Jaws, and the Swivel Block Attachment, you can change from holes to miters to overall measurements in seconds without losing calibration. All TigerSPC jaws and appliances are machined to ensure the same zero point, so no recalibrating for different setups is required.

## Upgrading TigerSPC

The system comes ready to upgrade with a LAN transceiver that can send data to statistical process control applications.

## Features

- Equipped with high precision jaws that can be interchanged without the need for calibration.
- Measures in fractional inches, decimal inches, and metric.
- Working lengths from 0- 20 feet.
- Anodized aluminum 6061-T6 construction.



## CONFIGURE A TIGERSPC IN 3 EASY STEPS.

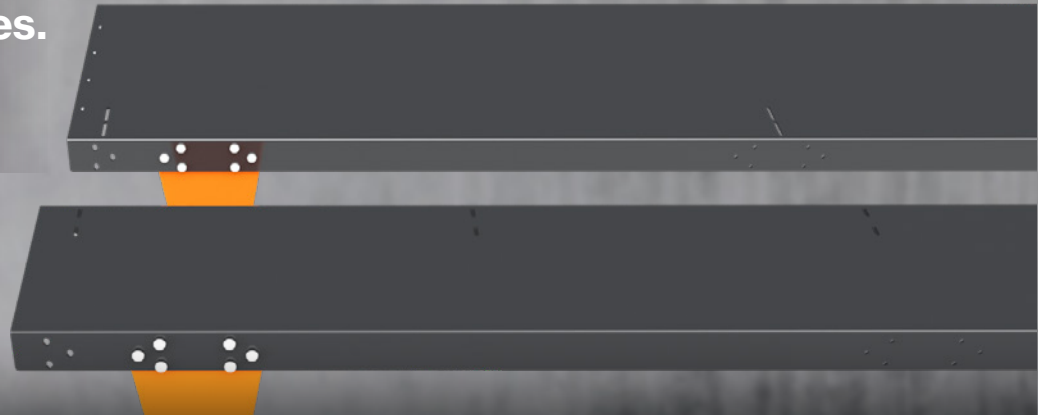


Build your very own by visiting:  
[www.configurator.tigerstop.com](http://www.configurator.tigerstop.com)



## Choose Your Tables.

- 14.4" (365 mm)
- 24" (610 mm)



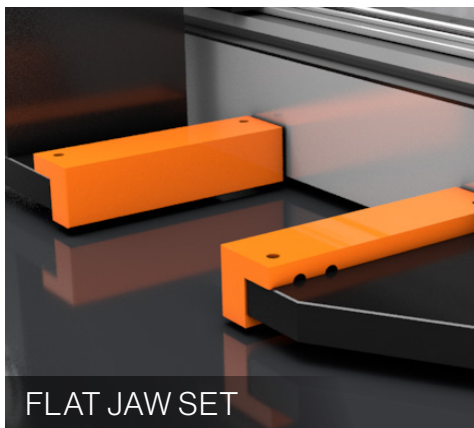
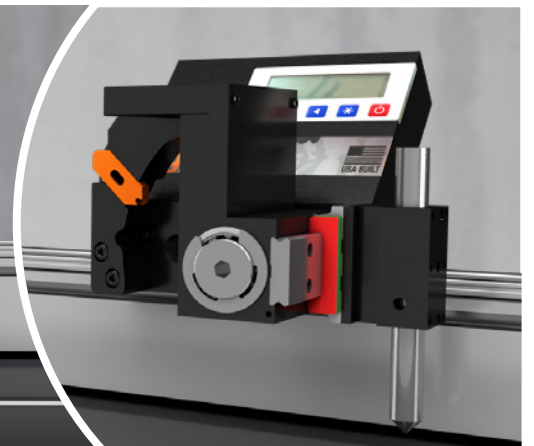
## Choose Your Software.

Every TigerSPC comes with a standard controller that is ready to upgrade with a LAN transceiver that can send data to statistical process control applications if so desired.



## Swivel Block Attachment

The swivel block attachment measures from hole center to hole center. It also swivels and allows you to attach other jaw accessories without losing your reference point.



FLAT JAW SET



HALF LAP JAW SET



MITER JAW SET

Learn more: [www.tigerstop.com](http://www.tigerstop.com)



# TigerStop Product

## COMPARISON CHART

Product	Max Load Push	Power Requirement	Drive Type	Accuracy	Working Length
 TigerSPC	Caliper	2 AA Battery	32mm Belt Steel Reinforced	+/- .008" +/- 0.2mm	0' - 20' 0m - 6m
 SawGear	Stop Only	110 Vac	32mm Belt Steel Reinforced	+/- .008" +/- 0.2mm	8' - 20' 2.4m - 6m
 TigerCrossCut	Stop Only	110 / 240 Vac	3/4" Hi-Lead Screw	+/- .003" +/- 0.08mm	10' 3m
 TigerFence	Stop Only	110 / 240 Vac	3/4" Hi-Lead Screw	+/- .003" +/- 0.08mm	51" or 70" 1.29m - 1.77m
 TigerStop	180 LBS 81 KG	110 / 240 Vac	32mm Belt Steel Reinforced	+/- .004" +/- 0.1mm	4' - 30' 1.2m - 9.1m
 TigerRack	720 LBS 326 KG	110 / 240 Vac	Rack & Pinion	+/- .008" +/- 0.2mm	12' - 108' 3.7m - 32.9m
 TigerTurbo	840 LBS 381 KG	110 / 240 Vac	75mm Belt Steel Reinforced	+/- .008" +/- 0.2mm	12' - 42' 3.7m - 12.8m
 HeavyDuty 2	2100 LBS 952 KG	110 / 240 Vac	Rack & Pinion	+/- .008" +/- 0.2mm	12' - 108' 3.7m - 32.9m
 TigerSaw 1000	2100 LBS 952 KG	208 / 480 Vac	32mm Belt Steel Reinforced or Rack & Pinion	+/- .012" +/- 0.3mm	8' - 108' 2.4m - 32.9m
 TigerSaw 2000	2100 LBS 952 KG	208 / 480 Vac	32mm Belt Steel Reinforced or Rack & Pinion	+/- .012" +/- 0.3mm	8' - 108' 2.4m - 32.9m
 TigerSaw Miter TigerSaw MiterXL	2100 LBS 952 KG	230 Vac	32mm Belt Steel Reinforced or Rack & Pinion	+/- 0.1° +/- .012"	8' - 108' 2.4m - 32.9m
 AutoLoader	5x100 LBS 5x45.36 KG	110 / 240 Vac 208 / 480 Vac	Pneumatic	N/A	4' - 30' 1.2m - 9.1m



National Institute of Standards and Technology Certified.  
• Made in USA from domestic and foreign components.

TigerStop USA  
12909 NE 95th Street  
Vancouver, WA 98682  
P: 360.254.0661 • F: 360.260.0755

TigerStop Europe  
Bedrijvenstraat 17 NL-7641 AM Wierden  
Nederland  
P: +31.546.57.51.71