




# New Product!



# SKU: SL-200-10-1-1

We are a new vendor to  with a unique addition to your sales arsenal! Smart level does everything a laser does and much more, easier and faster.



### Points

P1	X: 0 5/8"	Y: -6 3/8"	Z: 0 1/16"
P2	X: 20 9/16"	Y: -5"	Z: 3 7/16"
P3	X: 20 3/8"	Y: 5"	Z: 6 9/16"
P4	X: 0 1/4"	Y: 2 1/8"	Z: 0 1/16"

### Lengths

P1-P2	20 1/16"	16.8%
-------	----------	-------

There is no setup time. Just set the reel on its side and as quickly as you can walk and set the readout down you have a valid reading. No clear line of sight needed- works around or behind obstructions. One man operation.

The readings are displayed and stored in the app which comes free with the Smart Level purchase and can easily be emailed direct from the job site anywhere in the world.

**513-609-4005** • [boarhogtools.com](http://boarhogtools.com)



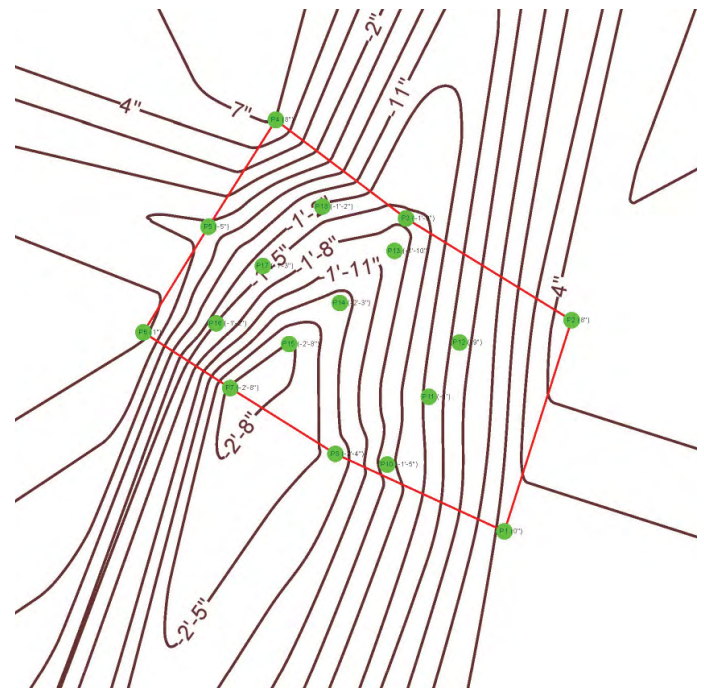
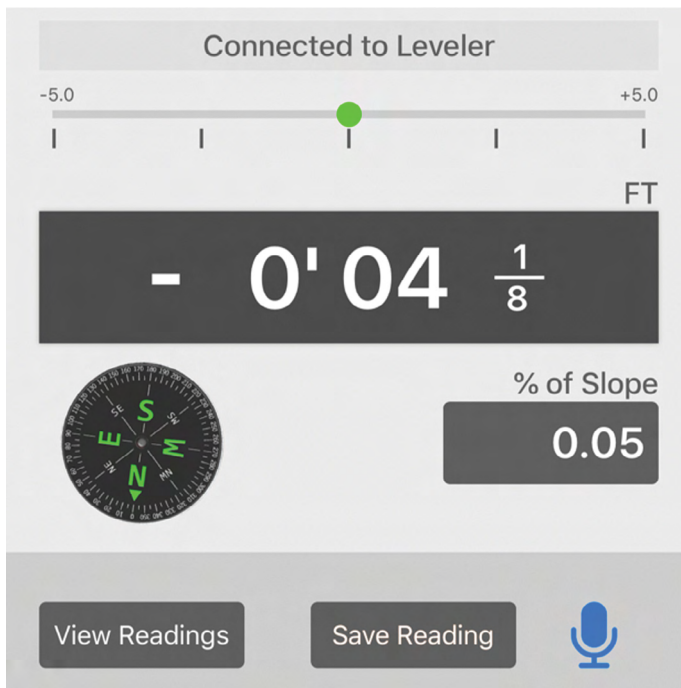


# SMART LEVEL

One TOUGH Level



No Math. The readings are calculated for you in either inches, fractions, tenths, metric, even engineering scale- feet above sea level. No addition or subtraction as with a laser and story pole.



Advanced functions include- % of Slope, Range where you set the acceptable tolerance and have audible and light indications as well as the readings, save photos and comments with your readings with the press of a button, and more.

3D Terrain and Structure Mapping. No other instrument on the market can create a true X,Y,Z formatted survey in real time on the job site. Perfect for upload into CAD\*.

\*CAD programs not included.

513-609-4005 •

[boarhogtools.com](http://boarhogtools.com)