



Before using this Krack Hog,  
study and understand entire  
Owner's Manual.

Serial Number \_\_\_\_\_



# Krack Hog Block & Paver Splitter Owner's Manual



**Krack Hog**  
**EZG MANUFACTURING**  
**1-800-417-9272**

*1 EZG Manufacturing*

*1-800-417-9272 ezgmfg.com*

**EZG Manufacturing**  
**405 Watertown Road**  
**Waterford, Ohio 45786**  
**(740) 749-3512 or 1-800-417-9272**  
**Fax (740) 962-2037 [www.ezgmfg.com](http://www.ezgmfg.com)**

*Revision Number-001 11/12/2020 - Present*

# TABLE OF CONTENTS

INTRODUCTION.....	3
ABOUT THIS MANUAL.....	3
GENERAL INFORMATION.....	3
SAFETY INFORMATION.....	3
SAFETY PRECAUTIONS. ....	4-5
CALIFORNIA PROPOSITION 65 WARNING.....	6
SETUP & OPERATTON INSTRUCTIONS. ....	6-9
DAILY MAINTENANCE.....	9
TROUBLESHOOTING THE JACK.....	9
OBTAINING SPARE PARTS.....	10
SERVICE RECORDS.....	10
WARNING LABELS AND LOCATIONS.....	11-13
KRACK HOG FRAME ASSEMBLY & PARTS BREAKDOWN.....	14
NOTES .....	15
WARRANTY.....	16
WARRANTY REGISTRATION.....	17

# INTRODUCTION

Congratulations on purchasing one of the finest pieces of hardscape equipment on the market today! If this is your first EZG Manufacturing product, you will not be disappointed. If you have previously owned an EZG Manufacturing product, you will find the same high quality and dependability that you have come to expect from EZG Manufacturing.

## ABOUT THIS MANUAL

The purpose of this manual is to inform the owner/employer/and the operator, how to safely operate this piece of equipment, and make them aware of any hazards. It also contains important information regarding assembly, set up, operation, and maintenance. It is the Owner/Employers responsibility to make sure that anyone who operates this machine understands all safety warnings. If you do not understand any items in this manual, please contact the dealer where this product was purchased, or the manufacturer at the number listed throughout this manual. If you have any suggestions about how to make this manual easier to understand, contact the manufacturer. Keep this manual available for reference wherever this piece of equipment is being used and make it available to any operators.

## GENERAL INFORMATION

Illustrations in this manual may show details or components that may not be the same as your machine. Continuing improvements to the design of this machine may have caused changes that are not included in this manual. The information in this document is subject to change without notice.

## SAFETY INFORMATION

The following safety symbols and signal words will be used throughout this manual and on the product, for your safety and the safety of others, please become familiar with their meaning and heed their warnings.



**This symbol, either used alone or with a signal word, is used to call your attention to instructions involving your safety and/or the safety of others. Failure to follow these instructions will likely result in personal injury or death.**



**DANGER**

**This signal word is used to identify a hazard which, if not avoided, will result in death or serious injury.**



**WARNING**

**This signal word is used to identify a hazard which, if not avoided, could result in death or serious injury.**



**CAUTION**

**This signal word is used to identify a hazard which, if not avoided, could result in minor or moderate injury.**

**NOTICE**

**This signal word is used to identify a hazard which, if not avoided, could result in property or equipment damage. It also may be used for special instructions related to performance, maintenance or general items.**

# SAFETY PRECAUTIONS



## WARNING

**Failure to obey the following safety instructions could result in DEATH or SERIOUS INJURY.**

Read and understand entire manual before operating the Krack Hog.

For your safety and the safety of others, replace any missing or damaged warning decals by contacting the manufacturer at 1-800-417-9272.

Make sure anyone operating the Krack Hog is thoroughly familiar with its operation. Keep all unauthorized and untrained personnel, especially children away from Krack Hog.

Never operate equipment with safety grate, guards or safety devices removed or open. Do not alter any safety guards.

Stay clear of blades while equipment is in operation. Keep all body parts, clothing, jewelry and solid objects away from all moving parts.

Never perform any work on the Krack Hog while it is in operation. Before working on or cleaning the Krack Hog, ensure all parts of the machine are stationary.

Never operate the Krack Hog under the influence of alcohol, drugs, or medications.

This Krack Hog has been designed and built as a splitter of man-made concrete retaining wall systems, brick pavers, and like materials and should not be used for anything other than its intended purpose.

Model	Weight
KHBS18	200 lbs. (90.72 kg)

Stay clear of moving parts while equipment is in operation.

Do not attempt to split natural quarried stone.

Do not attempt to split any type of block in excess of 100 lbs.

Do not attempt to split material less than 2" in size, as it may result in damage to the table.

Never attempt to ride the Krack Hog.

# SAFETY PRECAUTIONS



## **WARNINGS continued**

Avoid breathing dust produced while using the Krack Hog. Dust may contain crystalline silica and may cause serious health problems.

Always know the location of nearest fire extinguishers, first aid kit, and emergency personnel phone numbers in case of emergency.

## **CAUTION**

**Failure to obey the following safety instructions could result in MINOR or MODERATE INJURY.**

Inspect all fasteners, bolts and welds for nicks, cracks, cuts, damage, wear or loose-ness before each use. Repair as needed.



Always wear approved PPE, including glasses, hearing protection, hard hats, and ventilation masks when operating a Krack Hog.

Do not use the Krack Hog as a lifting device or with accessories or attachments not recommended by EZG Manufacturing, as damage to equipment or operator might result.

Avoid contact with hot hydraulic fluid.

## **NOTICE**

Use only factory authorized parts.

Used lubricants such as hydraulic oil and other hazardous materials must be taken to an authorized disposal or recycling center.

## California - Proposition 65 Warning

Engine exhaust and some of its constituents, and some dust created by power sanding, sawing, grinding, drilling, and other construction activities contains chemicals known to the State of California to cause cancer, birth defects and other reproductive harm. Some examples of these chemicals are:

Lead from lead-based paints - Crystalline silica from bricks -Cement and other masonry products -Arsenic and chromium from chemically treated lumber.

Your risk from these exposures varies, depending on how often you do this type of work. To reduce your exposure to these chemicals: ALWAYS work in a well-ventilated area, and work with approved safety equipment, such as dust masks that are specially designed to filter out microscopic particles.

## SETUP AND OPERATION INSTRUCTIONS

Before operating the Krack Hog, it should be properly set up on the jobsite. The Krack Hog weighs 200 lbs. (90.72 kg).

The Krack Hog is equipped with (2) wheels and two (2) handles.



**Warning! This equipment is to be operated by trained and qualified personnel over the age of 18. Death or serious injury can result.**

1. Position the Krack Hog at point of operation.
2. Measure the height of the block you are cutting before beginning. (*Figure 1*)



*Figure 1*

# SETUP AND OPERATING INSTRUCTIONS



**Warning! This equipment is to be operated by trained and qualified personnel over the age of 18. Death or serious injury can result.**

3. Set the height of the Upper Blade Assembly to match the height of your block or paver.
  - a. Remove the cotter pins from both sides of the Upper Blade Assembly.
  - b. CAUTION: Hold up the Upper Blade Assembly with one hand before proceeding to the next step.
  - c. Remove hitch pins from both sides.
  - d. Adjust the Upper Blade Assembly to the proper height on the frame.
  - e. Reinstall the hitch pins and cotter pins to the Upper Blade Assembly.
4. Place your block onto the table. Align your desired cut with the Lower Blade Assembly, keeping the block centered left to right on the table. (Figure 2)



Figure 2

5. Shut the valve to the hydraulic jack by turning the adjustable flex handle clockwise to the "RAISE" position until firm resistance is felt. (Figure 3)
  - a. CAUTION: Failure to shut the valve will prevent table from raising properly.

# SETUP AND OPERATING INSTRUCTIONS



**Warning! This equipment is to be operated by trained and qualified personnel over the age of 18. Death or serious injury can result.**



*Figure 3*

6. Proceed to step on the "Quick Pedal" (small pedal) to raise the table. (*Figure 4*)



*Figure 4*



# SETUP AND OPERATING INSTRUCTIONS



**Warning! This equipment is to be operated by trained and qualified personnel over the age of 18. Death or serious injury can result.**

7. Hold firmly until block makes contact with the Upper Blade Assembly.
8. Remove your foot from the "Quick Pedal." The table will remain in the "Raised" position.
9. Depress the "Hydraulic Pedal" (large pedal) all the way down and all the way back up five (5) or more times until the block splits.
  - a. The number of compressions required to split block may depend on width of block.

## DAILY MAINTENANCE



**Warning! Before performing any described maintenance items, make sure engine is turned off and spark plug wire is disconnected. Death or serious injury can result.**

- Lift the table up a couple of inches and shake back and forth. This will allow loose debris or chips that have fallen in between the table and bottom blade assembly to fall free.

## TROUBLESHOOTING THE JACK

### **IF THE JACK IS LEAKING OIL:**

- Make sure the flex handle has not been backed out of the jack. If it has, reinsert into the jack.
- Remove the rubber plug on the side of the jack and refill hydraulic fluid. Proceed with the following steps to bleed air from the jack.

### **IF THE JACK IS NOT PUMPING:**

- The pump may not be pumping due to trapped air. Turn flex handle to open position then pump the large foot pedal 40-50 times all the way down then all the way back up.
- Test troubleshooting by attempting to split a block.
- Repeat this procedure four (4) to five (5) times.
- If the jack fails to respond, please contact the EZG Manufacturing.



# WARNING LABELS & LOCATIONS

- Two (2) Krack Hog Decals - Located on the Front and Back Panels

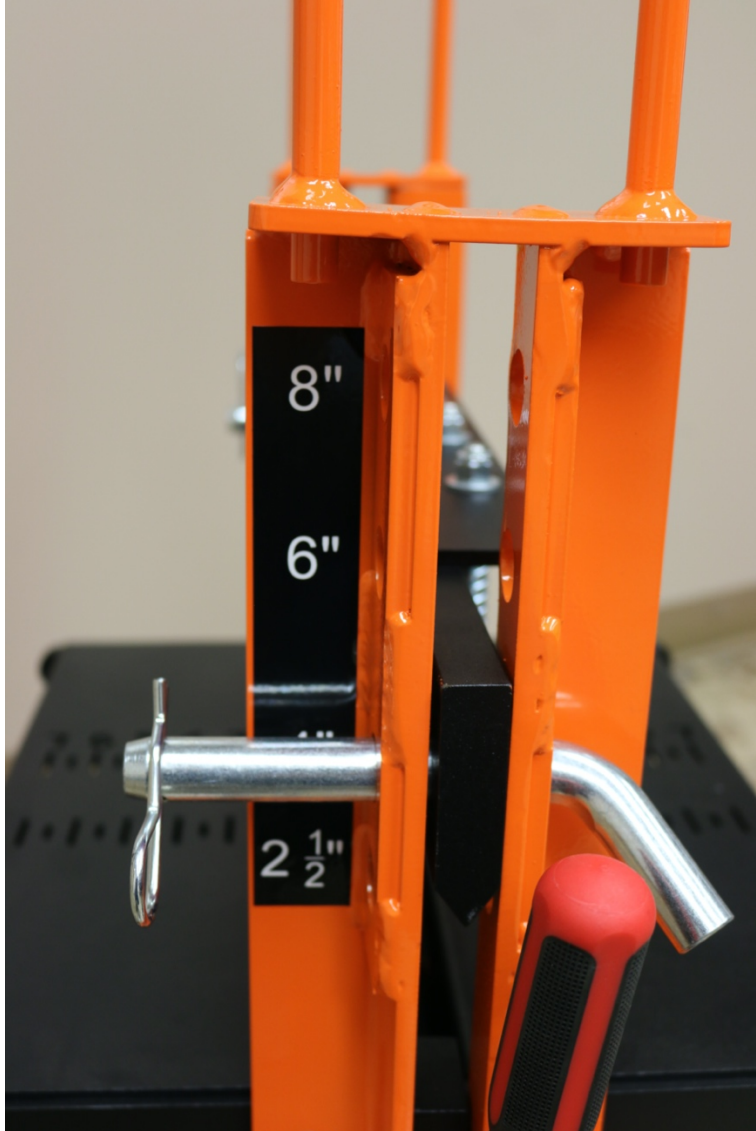


- One (1) U.S. Flag Decal
- One (1) Read Owner's Manual Decal



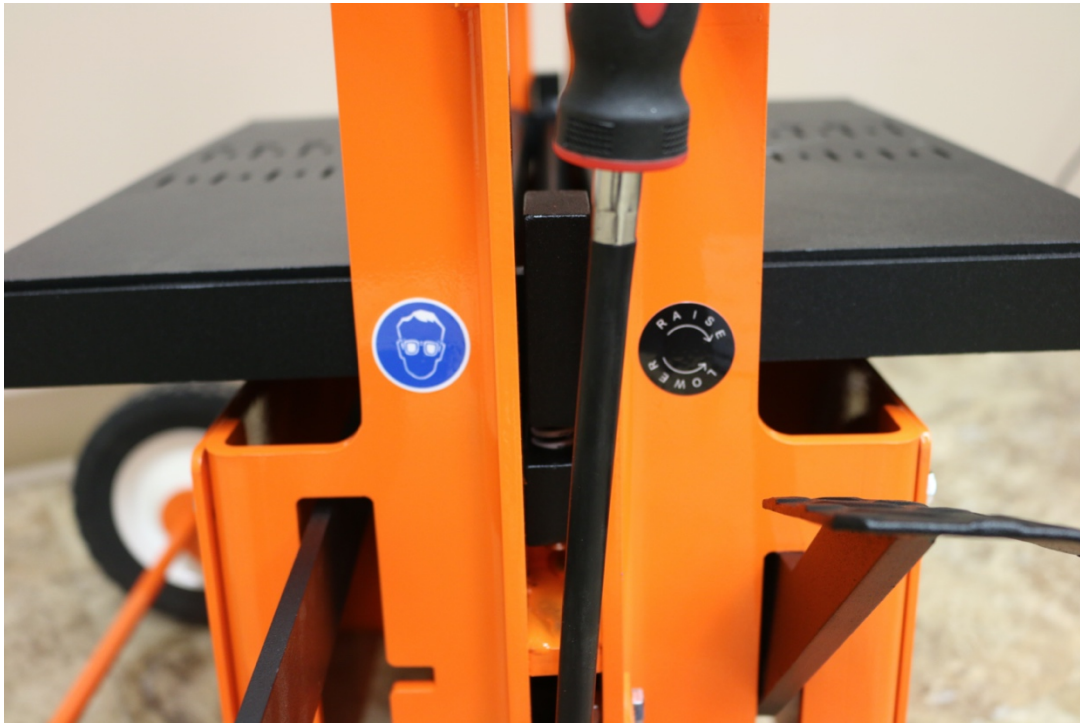
# WARNING LABELS & LOCATIONS

- One (1) Measurement Decal



# WARNING LABELS & LOCATIONS

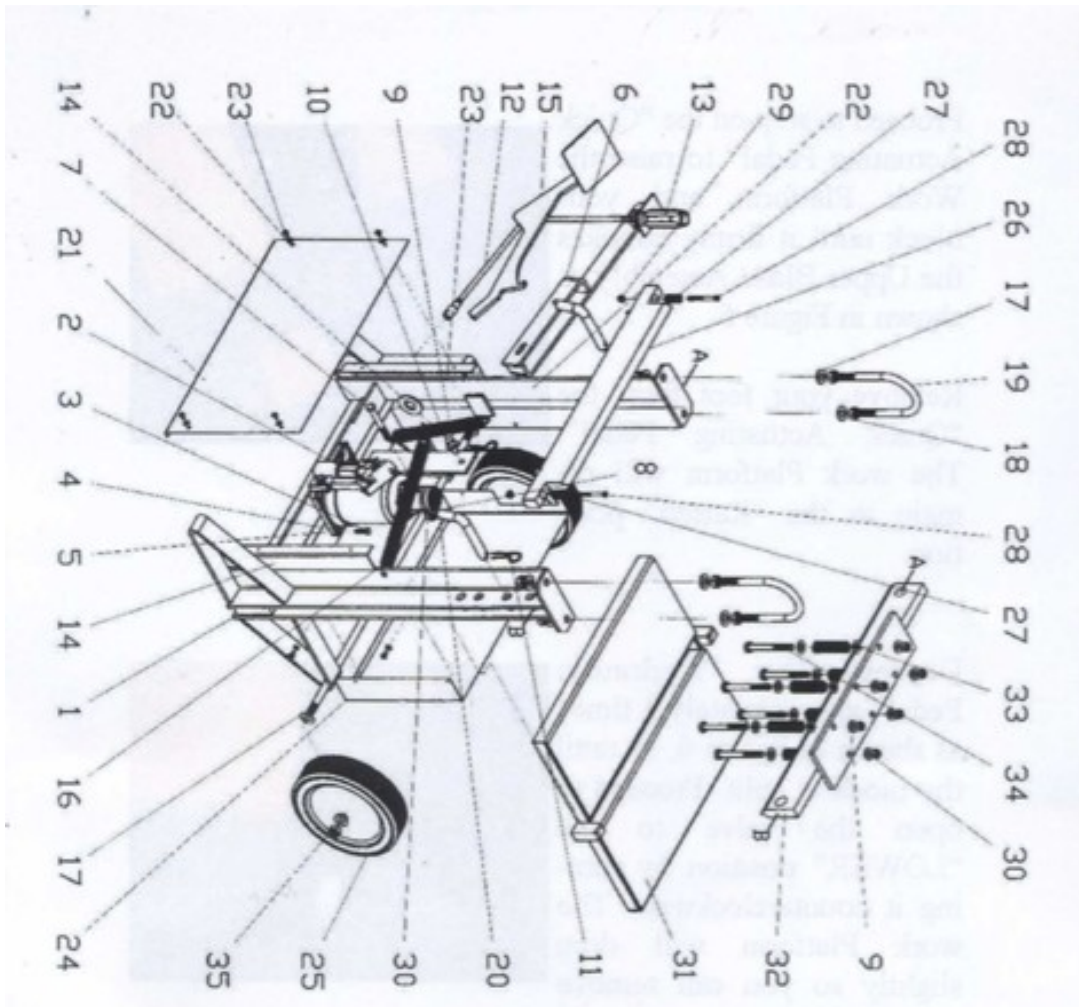
- One (1) Safety Glasses Advisory
- One (1) Raise / Lower Decal



- Two (2) Finger Pinch Warning Decals, Located Above Blades



# KRACK HOG FRAME ASSEMBLY & PARTS BREAKDOWN



Item Number	Part Number	Part Description	Quantity
1	KH-A-1	Krack Hog-Frame Weldment	1
2	56370	12 Ton Jack	1
3	09-305	5/16" -18 x 2" GR5 Bolt	1
6	KH-A-4	Small Foot Pedal (Slow Pedal)	1
7	09-3167	3/8" -16 x 3 1/2" GR5 Bolt	1
9	09-105	5/16" Flat Washer	23
10	09-308	3/8" -16 x 1 1/2" GR5 Bolt	1
13	8009623	Krack Hog Flex Handle	1
14	09-823	Extension Spring .969 OD x 6"	2
15	KH-A-5	Large Foot Pedal (Slow Pedal)	1
16	DWE-0941-6.17	Extension Spring	1
17	KH-504	Axel	1
20	09-425	10332 Bent Pin 3/4" x 4-1/2"	2
22	09-301	1/4" -20 x 1" GR5 All Thread Bolt	8
23	09-104	1/4" Flat Washer	18
25	07-189	Flat Free Wheel	2
26	KH-A-7	Bottom Knife Weld Assembly	1
27	MH062-100	Die Spring	2
28	09-3183	1/4" -20 x 2 Flat Head Screw Black Oxide	2
30	09-204	3/8" -16 Nylon Nut	8
31	KH-A-9	Small Table Weldment	1
32	KH-A-6	Upper Knife Welded Assembly	1
33	DWC-1121-14	Compression Spring (Krack Hog Top Blade)	6
34	09-3070	3/8" -16 x 4 GR5 Bolt	6
35	20-1000	Push-on Retaining Cap 1/2" OD	2
21,24	KH-3	Guard	2
	09-200	1/4" -20 Nylon Nut	13
	09-202	5/16" -18 Nylon Nut	1
	09-322	1/4" -20 x 3/4" GR5 Bolt	3
	16-250	Krack Hog (Wveeded)	2
	16-253	Krack Hog Decal Kit	1
	20-105	Rivets for Name Plates and Hood Straps	2
	20-126	Blank Metal Plates	1
	KH-25	Valve Cable Guide	1



# WARRANTY

## Limited Warranty

The manufacturer warrants that products manufactured shall be free from defects in material and workmanship that develop under normal use for a period of one year on all products from the date of shipment. The foregoing shall be the exclusive remedy of the buyer and the exclusive liability of the manufacturer. Our warranty excludes normal replaceable wear items, i.e. gaskets, wear parts, seals, O-rings, belts, drive chains, clutches, etc. Any equipment, part or product which is furnished by the manufacturer but manufactured by another, bears only the warranty given by such other manufacturer. (Manufacturer agrees to furnish free of charge a written description of problem or cause.) Warranty is voided by product abuse, alterations, use of equipment in applications for which it was not intended, use of non-manufacturer parts, or failure to follow documented service instructions. The foregoing warranty is exclusive of all other warranties whether written or oral, expressed or implied. No warranty of merchantability or fitness for a particular purpose shall apply. The agents, dealers, and employees of Manufacturer are not authorized to make modifications to this warranty, or additional warranties binding on the Manufacturer. Therefore, additional statements, whether oral or written, do not constitute warranty and should not be relied upon.

The Manufacturer's sole responsibility for any breach of the foregoing warranty provisions, with respect to any product or part not conforming to the Warranty or the description herein contained, is at its option (a) to repair, replace, or refund such product or parts upon the prepaid return thereof to location designated specifically by the Manufacturer. Product returns not shipped prepaid will be refused (b) as an alternative to the foregoing modes of settlement- the Manufacturer's dealer may repair defective units with reimbursement for expenses. A written description of problem or cause must accompany all warranty claims.

Except as set forth here in above and without limitation of the above, there are no warranties or other affirmation which extend beyond the description of the products on the fact here of, or as to operational efficiency, product reliability, or maintainability or compatibility with products furnished by others. In no event, whether as a result of breach of contract or warranty or alleged negligence, shall the Manufacturer, be liable for special or consequential damages including but not limited to: Loss of profits or revenue, loss of use of the product or any associated product, cost of capital, cost of substitute products, facilities or services or claims of customers. Manufacturer does not assume responsibility for any accident due to equipment modification.

No claim will be allowed for products lost or damaged in transit. Such claims should be filed with the carrier within fifteen days

Effective July 20, 2005

EZG Manufacturing is the exclusive manufacturer of the patented Grout Hog® Grout Delivery System the Mud Hog® Hydraulic Mixing Station, the Hog Trough® mud pan, the Hog Cart™, the Hog Slopper™, the Booger Hog® Wall Scrubber, the Hog Leg® Wall Brace System, the Hog Crusher™ Material Recycling System, and the Krack Hog.



Fax Warranty Registration form to 740-962-2037  
or submit online at [www.ezgmfg.com](http://www.ezgmfg.com) by clicking on  
“Products” then “Warranty Cards”.

## WARRANTY REGISTRATION

CONTACT: \_\_\_\_\_

COMPANY: \_\_\_\_\_

ADDRESS: \_\_\_\_\_

CITY: \_\_\_\_\_ STATE: \_\_\_\_\_ ZIP: \_\_\_\_\_

TEL: (\_\_\_\_) \_\_\_\_-\_\_\_\_ FAX: (\_\_\_\_) \_\_\_\_-\_\_\_\_ CELL: (\_\_\_\_) \_\_\_\_-\_\_\_\_

EMAIL: \_\_\_\_\_

PURCHASED FROM:  Direct  Distributor: \_\_\_\_\_

PURCHASE DATE: \_\_\_\_\_ SERIAL NO. \_\_\_\_\_

**PLEASE COMPLETE THIS WARRANTY CARD, AND RETURN VIA MAIL, FAX, OR E-MAIL,  
WITHIN 30 DAYS OF PURCHASE TO VALIDATE YOUR MANUFACTURER'S WARRANTY  
FOR ALL EZG MANUFACTURING PRODUCTS.  
WARRANTY PROVISIONS OF THIS MACHINE ARE HANDLED DIRECTLY THROUGH  
THE MANUFACTURER.**

**EZG MANUFACTURING \* 1833 North Riverview Road, Malta, OH 43758 \***

**PHONE 1-800-417-9272 \* Email: [warranty@ezgmfg.com](mailto:warranty@ezgmfg.com) \* FAX 740-962-2037**

*Please take a minute to fill out the survey below so that we can better serve our customers.*

## EZ Survey

**1. WHERE DID YOU FIRST HEAR ABOUT EZG MANUFACTURING? (CHECK ONE)**

Masonry Magazine  Website  Newsletter  Referral  Masonry Construction

Other: \_\_\_\_\_

**2. WHAT INFLUENCED YOU TO BUY?  QUALITY  PRICE  EASY TO USE  OTHER**

**3. WHO IS YOUR SALES REPRESENTATIVE? \_\_\_\_\_**

**4. ARE YOU SATISFIED WITH THE CUSTOMER SERVICE YOU RECEIVED?  YES  NO**

**Explain:** \_\_\_\_\_

**5. WHAT OTHER EZG MANUFACTURING PRODUCTS DO YOU OWN?**

\_\_\_\_\_  
\_\_\_\_\_

**6. WOULD YOU LIKE TO BE FEATURED IN OUR NEWSLETTER?  YES  NO**

**If yes, where can we reach you and what is the best time?**

\_\_\_\_\_  
\_\_\_\_\_

**Comments:** \_\_\_\_\_

\_\_\_\_\_  
\_\_\_\_\_