



Use Zone: 53' x 42'



Fall Height: 7'5"



ADA Access: Yes



Age Group: 5-12



Occupancy: 34-38



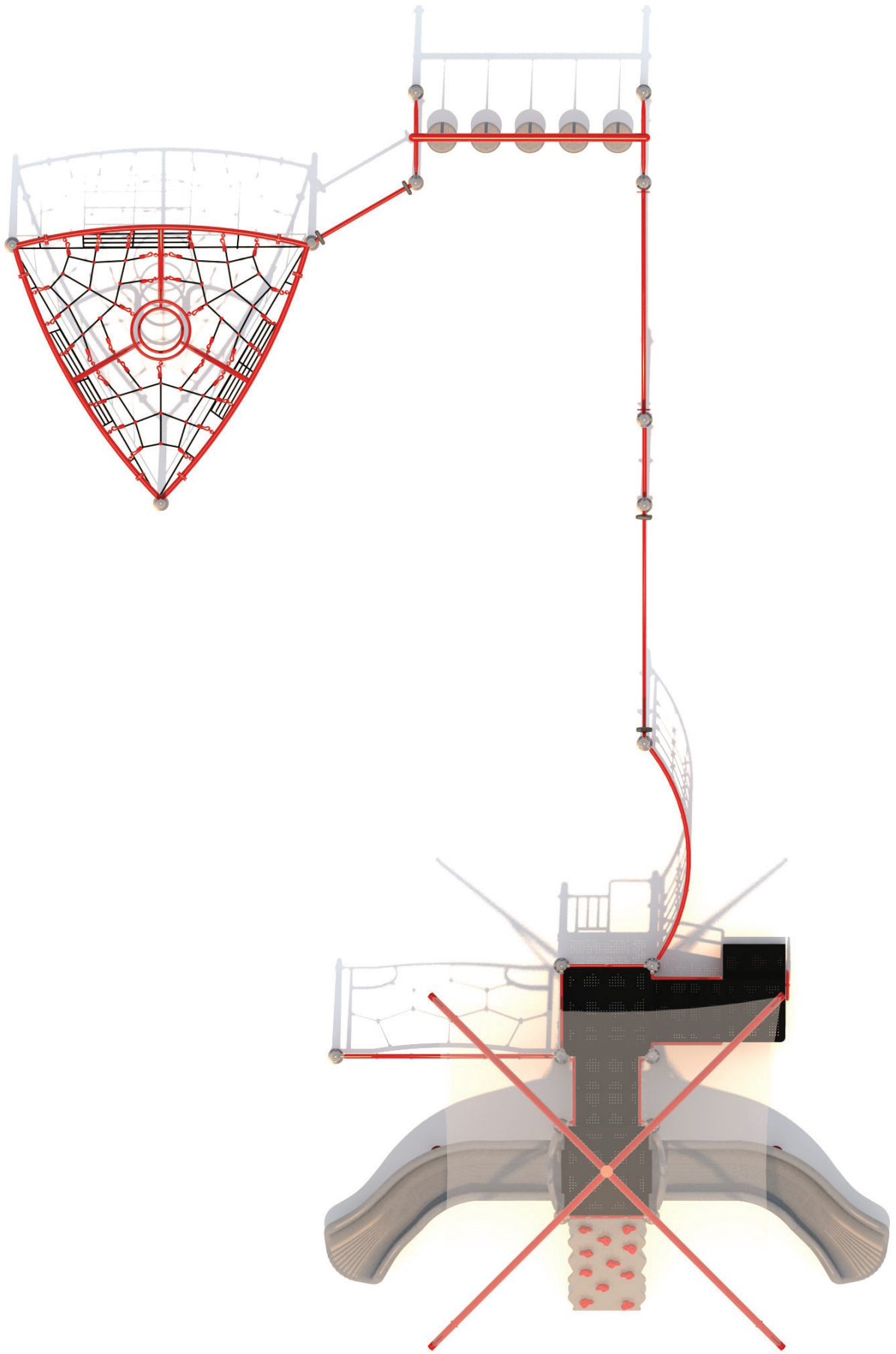
Free Shipping!

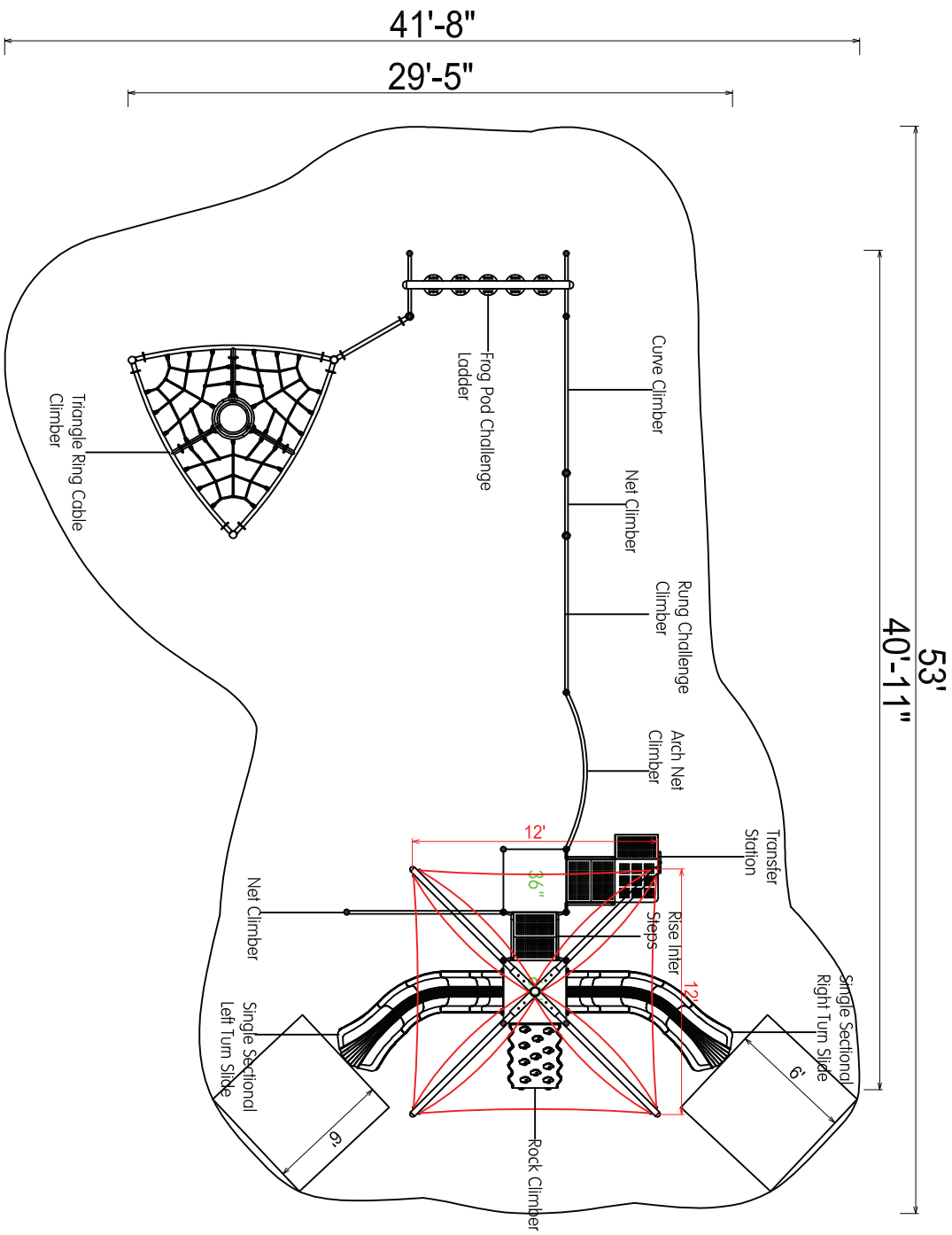
**COMPONENTS:** Curve Climber / Net Climber / Rung Challenge Climber / Arch Net Climber / Transfer Station / Rise Inter Steps / Single Sectional Right Turn / Rock Climber / Single Sectional Left Turn Slide / Net Climber / Triangle Ring Cable Climber / Frog Pod Challenge Ladder





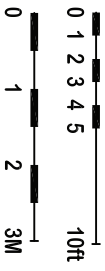






53'  
40'-11"

Compliance:  
 This play structure has been designed to meet the safety requirements established in:  
 - 2010 ADA Standard  
 - ASTM F1487  
 - CPSC Pub #325  
 when the play structure is installed over a properly maintained surfacing material which is in compliance with:  
 - ASTM F1292  
 - ASTM F1951  
 and is appropriate for the highest designated play surfaces of the structure.



Drawing No: KP-37111  
 Date: 15-09-2023  
 Scale: To Fit

Structure Size: 40'-11" x 29'-5" x 15'-3"  
 Recommended Use Zone: 53' x 41'-8"  
 Surface Area: 2226 Sq Ft

HDPS: 7-5"  
 Age Group: 5-12  
 Capacity: 34-38  
 Weight: 3600 lbs

**Creative Recreational Systems, Inc**