



NO ONE PLANS FOR THESE ACCIDENTS

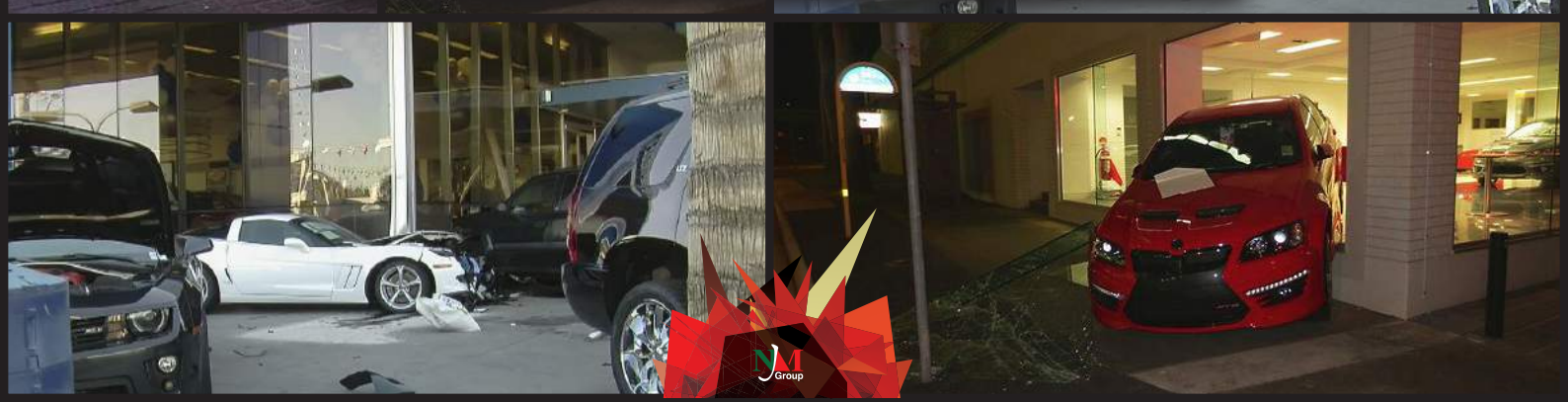
# WE CAN HELP YOU TO AVOID THEM

BUMP RAILS BY AUSTRALIAN BOLLARDS  
HELPING YOU MAKE THE WORKPLACE SAFE

[AUSTRALIANBOLLARDS.COM.AU](http://AUSTRALIANBOLLARDS.COM.AU)



# BUMP RAILS



A photograph of a dark grey Audi SUV parked in a showroom. The car is equipped with a roof rack and a roof box. In the foreground, several silver cylindrical bump rails are visible, arranged in a line. The car's license plate area displays "Audi C". The background shows other vehicles and the interior of the showroom.

# MAKE IT SAFE

BUMP RAILS  
BY - [AUSTRALIANBOLLARDS.COM.AU](http://AUSTRALIANBOLLARDS.COM.AU)



# AUSTRALIAN BOLLARDS MAKING A SAFE SHOWROOM

The Australian Bollards stainless steel bump rail is part of the Australian Bollards wall to wall rail system protection range that offers a superior level of protection, particularly in high abuse areas.

Available in different mounting options along with a variety of widths, for a safe and easy way of protecting fixtures in an industrial and commercial building environments, including retail, warehousing, medical and food industries, hotels, airports, bus stations, railway stations, tram stops, passenger check in areas, restaurants, offices, supermarkets, shops, hospitals, schools, nursing homes, retirement homes.

That can be additionally designed for hygienic environments, where the collision of trolleys, fork lift trucks and other vehicular traffic with the fabric of the building occurs, where the protection of vulnerable walls, kerbs and drains.

Australian Bollards stainless steel Bump Rails can cope with most collisions and will protect kerbing, corners, pipe work, electrical cabinets, air conditioners, fire services and a host of other vulnerable fixtures from damage, prolong their life and keep them looking good, that out performs traditional timber and aluminium bump rails that never require painting.

Australian bollards custom manufactures our architectural high-impact stainless steel energy absorbing safety bump rail system in a No:4 finish finished stainless steel high-grade heavy Duty pipe.

Our bump rails are used on interior/exterior wall or floor surfaces and are either run horizontally, at a fixed height above finished floor, or vertically on "outside" wall corners.

Our Bump Rails are also compliant with the latest Australian Standard AS 1428-2009 when installed at the height set out in the Standard as and if applicable and are ideal method to provide impact resistance required to meet the relevant 2004 OH&S act compliance codes, where and when applicable in your particular workplace situation.

**Completes its one stop service to its clients with everything for stainless steel crash rails bumper guards, inclusive of custom manufacture, installation if required and annual service maintenance to keep the product looking like new.**

**NATION WIDE FAST DELIVERY  
& PROFESSIONAL INSTALLATION BY OUR EXPERTS  
[WWW.AUSTRALIANBOLLARDS.COM.AU](http://WWW.AUSTRALIANBOLLARDS.COM.AU)**

CALL US FOR A FREE QUOTE

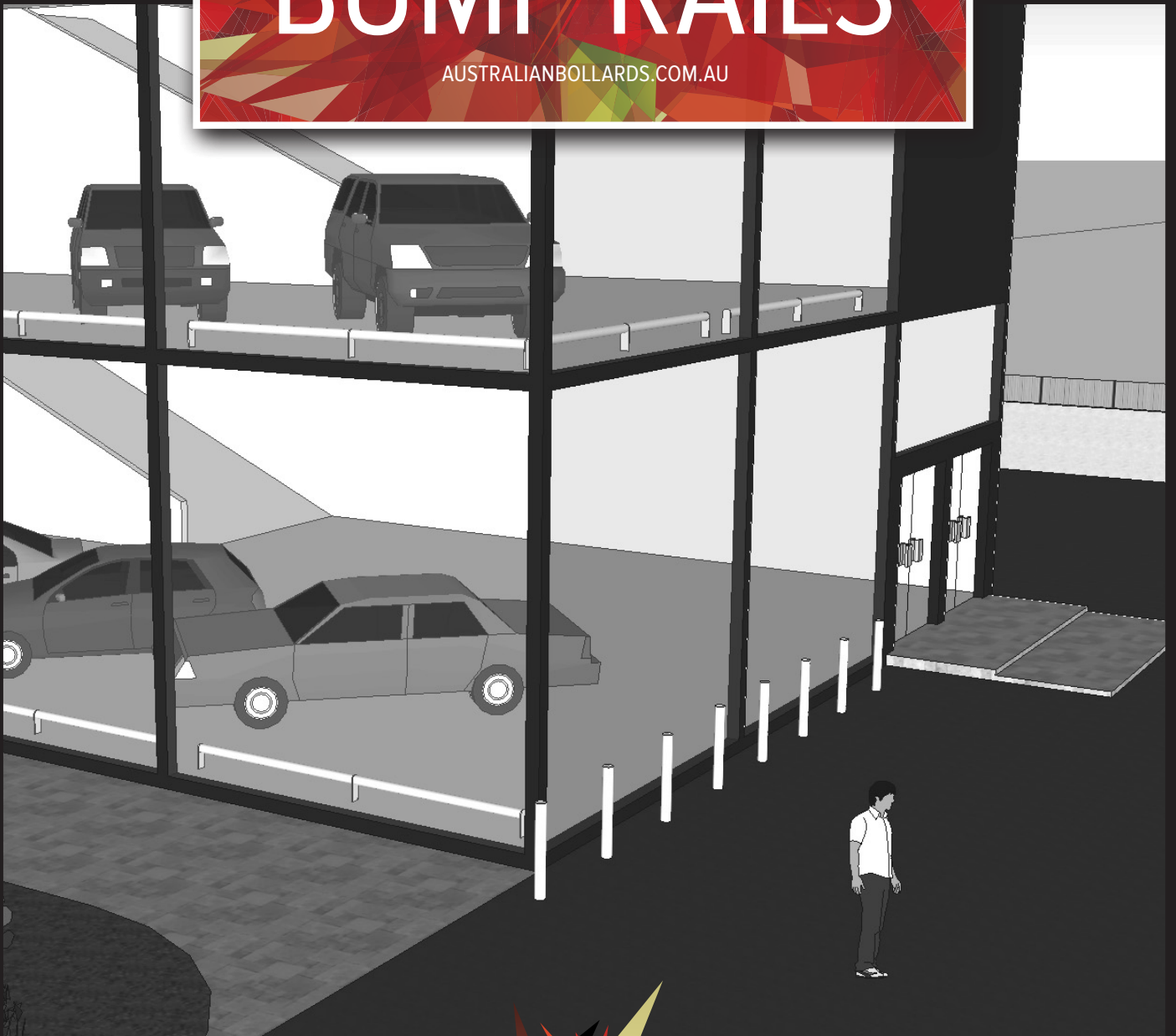
**03 9459 3488**





# BUMP RAILS

AUSTRALIANBOLLARDS.COM.AU







# BUMP RAILS

[AUSTRALIANBOLLARDS.COM.AU](http://AUSTRALIANBOLLARDS.COM.AU)

# AUSTRALIAN BOLLARDS



# MAKING A SAFE SHOWROOM



# AUSTRALIAN BOLLARDS STOPS THE NIGHTMARE

**BUMP RAILS**  
BY - AUSTRALIANBOLLARDS.COM.AU

NATION WIDE FAST DELIVERY  
& PROFESSIONAL INSTALLATION BY OUR EXPERTS  
[WWW.AUSTRALIANBOLLARDS.COM.AU](http://WWW.AUSTRALIANBOLLARDS.COM.AU)

CALL US FOR A FREE QUOTE

**03 9459 3488**

