



Premium Energy
Storage System

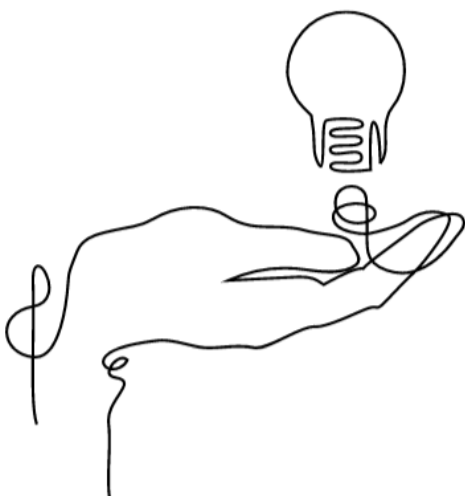
Power Lite

Share the energy.

Shine on.



Here at UZ, we believe that every smart home deserves the opportunity to run on the good kind of energy. Premium solutions that store solar power during the day, for you to use, whenever you need it.



We all have a choice. But doing good should always be the easy decision. So forget about ugly battery boxes, difficult installations and complicated software. Instead, say ‘welcome home’ to integrated solutions made from the safest high-quality components out there. We work with best in the business to design everything to compliment your home and to keep you updated with useful overviews of your personal green power plant.

So what are we waiting for? The sun is already up.

Let's Dream Big !



Power Lite

Low-voltage, multi-purpose battery solution

Our low-voltage Power Lite Series is a safe and scalable LFP battery solution.

The compact single unit measures 3U in height in the standard configuration. The design allows for multi-parallel configurations (up to 16 units).

The flexible and scalable solution is suitable for a wide range of application scenarios:

- Residential energy storage
- Off-grid energy storage
- Micro-grid applications
- UPS power supply



Standing installation
(Wall-mounting available)



Standard installation (4 units)



Power Lite

SPECIFICATION

Model	Power Lite Series
Battery Type	LiFePO4
Nominal Battery Energy	5.12 kWh
Nominal Capacity	100 Ah
Nominal Voltage	51.2 V
Working Voltage Range	48-57.6 V
Nominal Current (Recommended)	50 A (0.5 C)
Max Continuous Discharging Current (Cell)	100 A (1 C)
Net Weight	43 kg
Dimension [W*D*H]	440*530*132 mm
Working Temp. Range	0-50 deg C
Designed Life-span	6000 Cycles ³
Protection Level	IP20
Communication	CAN/RS485/RS232/Dry Contact
Certificate	TUV/IEC 62619/CE-IEC 61000 IEC 62040/UN38.3
Calendar Life	10 Years ³

1: L051100-A can be installed by using F series Rack or Fast Installation Component

2: L051100-A can be installed by using Standing Installation Component

3: Working Condition 0.5 C @ 25 deg C, 80% DoD, 1 cycle per day

Powered by **CATL**



Accessory



Fast Installation Component
(H100)



Vertical Mounting Component
(C100)



Wall-Mounting Component
(C300)



Rack
(R100 max. 4 units)



**Wherever you
find your energy.
Shine on.**