



L051100-A1 / L051100-A1-C300

Multiple Units in Parallel Connection

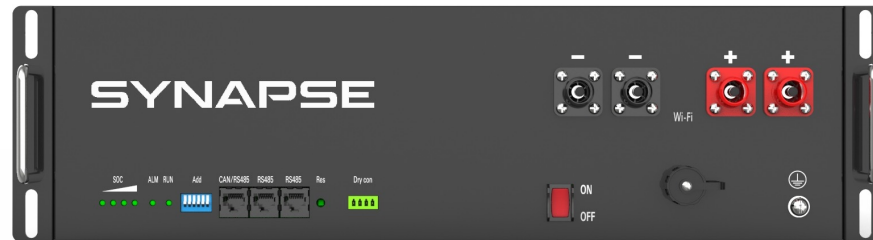
Prepared by:

John Sun, Key Account Manager



Battery Pack L051100-A1:

BMS firmware customized for Voltronic Power inverter (CAN communication)

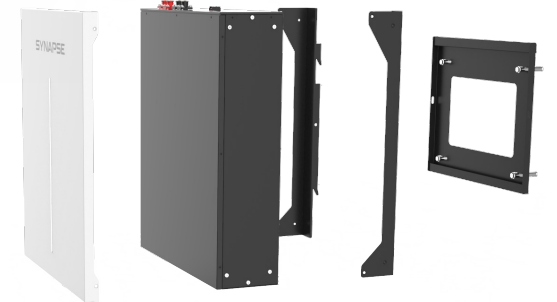


- ① 51.2V / 100Ah, 5.12 kWh, powered by CATL cell
- ② Packaged with CA03 cable set



L051100-A1-C300

(Standard Firmware for Deye, Goodwe, etc)



- ① L051100-A1 plus C300 pre-assembled
- ② Packaged with CA03 cable set



CA03 Cable Set:



| | | | | Output Cable for L051100--A, L051100--A1, L051100--D, H100 ; |
|---------------------------------------|---|------------------------|----------|--|
| | | Cable package Model | | CA03 |
| Name | SPEC | Unit | Quantity | |
| Neutral carton | Dimension : 640*530*226mm,Double corrugated 5-layer cardboard, 6±1mm, K-K, breaking strength 5kGF /cm2, | PCS | 1 | 0.025 |
| PE Bag | PE Bag_Dimension:400x250mm_Thick=0.1mm | PCS | 1 | V |
| Label | Label_white_70x50mm, back glue; | PCS | 1 | V |
| Groundwire | Groundwire_Yellow green wire UL3173 10WAG_Length:1m,double M6 OT Terminal | PCS | 1 | V |
| Standard inverter Communication Calbe | Standard inverter Communication Calbe,Length:1.5m_Black__CAT 5 (8P8C) Battery 1H5L;Inverter:4H5L; | PCS | 1 | V |
| DC Cable | Output DC cable: Positive EV cable,Orange,1500V,Multi-Cores, Cable,Length:1.5m; one side hot plug:Red__PSRP6XB25, one side SC25-8 terminal; | PCS | 1 | V |
| DC Cable | Output DC cable: Negative EV cable,Orange,1500V,Multi-Cores, Cable,Length:1.5m; one side hot plug:Black__PSRP6XA25, one side SC25-8 terminal; | PCS | 1 | V |

Inverter PIN will be customized to 6H7L for Voltronic Power inverter model (CAN)



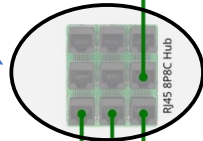
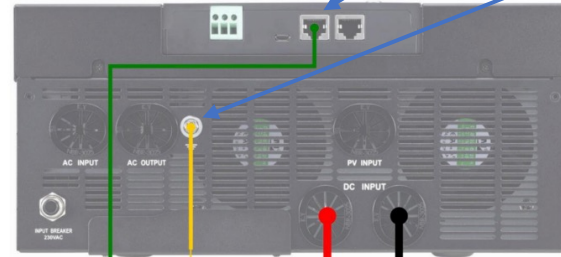
**additional Cables / Components
will be needed for Multiple batteries in parallel connection**



Multiple L051100-A1 in Parallel (close loop) with Voltronic Power inverter

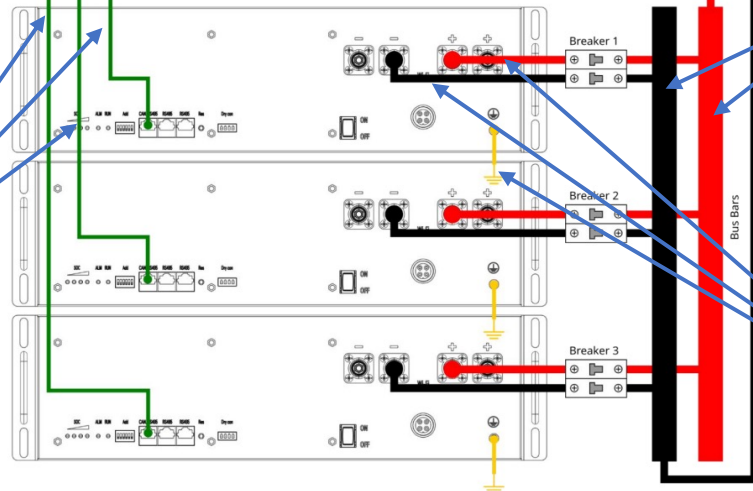
- Communication cable, included in CA03 cable set
- Ground cable, included in CA03 cable set
- Power cable, included in CA03 cable set

T400 RJ45 CAN Hub



Busbar

Parallel communication cable: standard straight CAT5 ethernet patch cables



Parallel power cable, ground cable



Multiple L051100-A1-C300 in Parallel Connection with Deye:



For this kind of installation scenario, with busbar, installer can use the power cable which a part of CA03 to connect battery to busbar, but need prepare an additional standard straight CAT5 ethernet patch cables for the communication between batter packs.



Thanks For Your Attention

Webpage @ www.uzenergy.com

Feedback @ forum.uzenergy.com

sunyq@uzenergy.com

Pure energy.
Shine on.

Follow us on **LinkedIn**

<https://www.linkedin.com/company/uz-energy>

UZENERGY