

INDEX

DOMESTIC 6

MK 001 ROOF TILE 8

MK 002 ROOF TILE 9

MK 003 ROOF TILE 10

MK 004 SLATES ROOF 11

INDUSTRIAL 12

MK 005 KLIP LOK 14

MK 006 KLIP LOK 15

MK 007 TRAPEZOIDAL 16

MK 008 TRAPEZOIDAL 17

MK009 ONDULATED 18

FLAT 20

MK 010 FLAT PORTRAIT 22

MK 011 FLAT LANDSCAPE 23

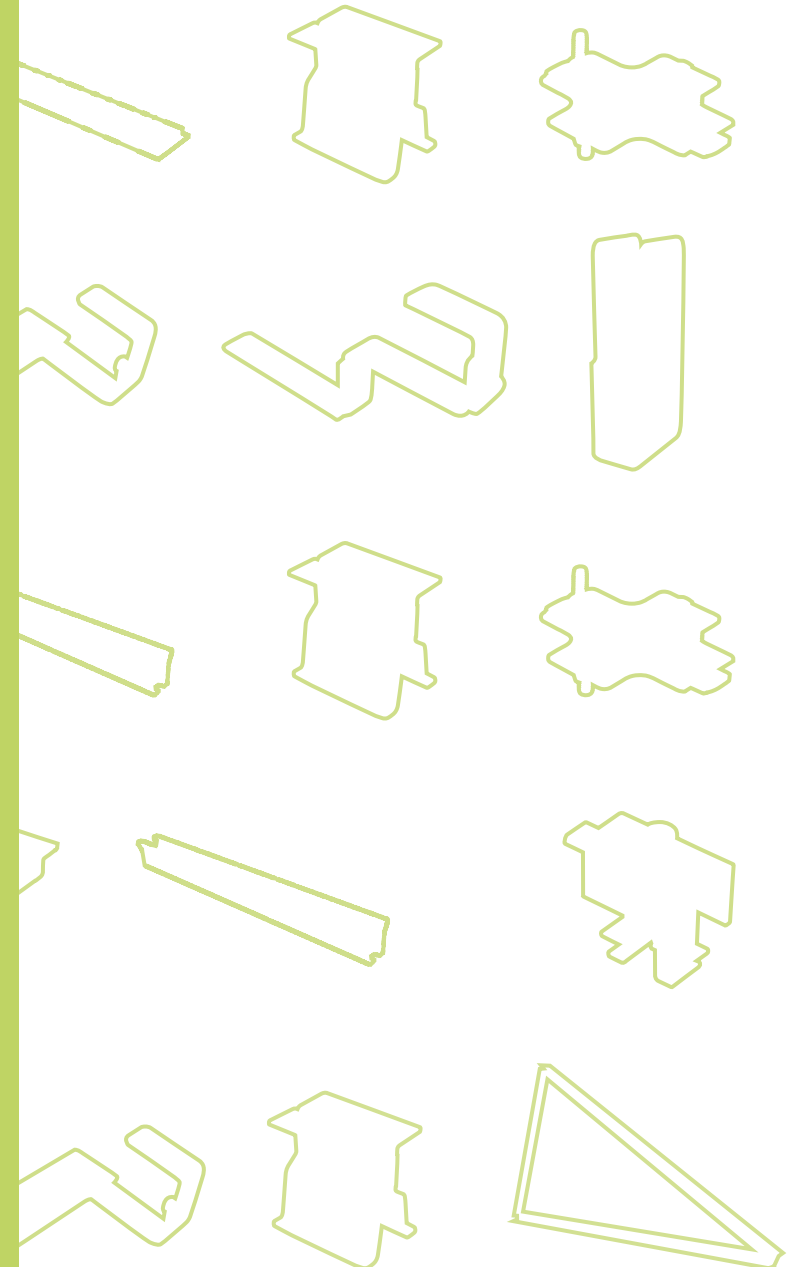
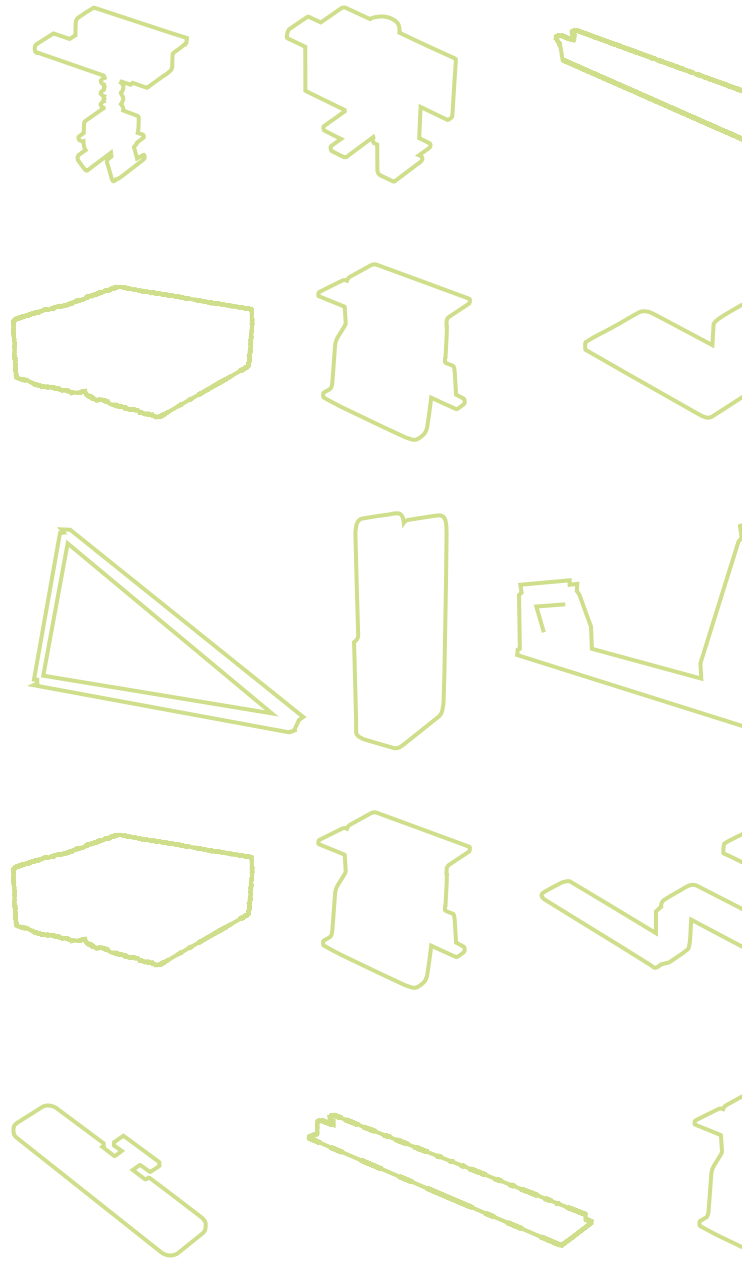
MK012 FLAT 10° LANDSCAPE 24

MK 013 FLAT PERSONALIZED 25

ACCESSORIES 26

EXTRAWIND ACCESSORIES 27

AIR CONDITIONING 28



WE ARE A SOUTH-AFRICAN COMPANY WITH INTERNATIONAL SOUL



FROM JOHANNESBURG TO EUROPE

Thanks to the partnership with the European company Rodigas and its know-how, we contribute to the qualification and specialization of the local workforce for a positive development of the social context where the company is inserted. We study a range of products designed exclusively for the South African market.

OUR WAREHOUSE

Our products are available from our modern logistic warehouses in Johannesburg and Cape Town. Transport and placing of the material directly in worksite. Optimisation of the packing according to the customer requirements. Our packaging is fully recyclable. Management of supplies of items for distribution with custom labels and packaging.



MEMBER OF SAPVIA

The South African Photovoltaic Industry Association (SAPVIA) consists of key players in South Africa's photovoltaic market who have the knowledge, experience, initiative and determination to drive the growth of the industry. The association aims to represent the PV industry before provincial and national authorities, as well as government, to promote a higher penetration of the technology, and to advise key decision makers on the most adequate policies to develop a sustainable PV market.

CERTIFIED QUALITY

In tune with market demands and needs of our more careful customers we chose, where possible, to test and certify our products by international accredited certification bodies. TÜV Rheinland, TÜV Sud and GS, unmistakable synonym of quality and safety at the highest levels. Our company, firmly believing in these realities, considers that tests and inspections carried out have an important role in the market because they facilitate and assure the customer's choice.

CUSTOMER CARE

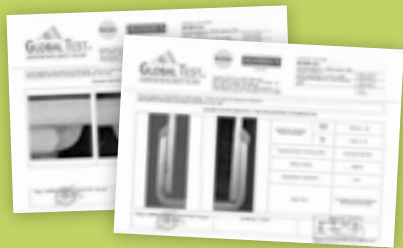
Complete support always at your service, from product design to after-sales. Lizard SA employs well qualified engineers capable of designing custom-made systems fitted to suit special applications. Exclusive service managers and service technicians are employed to process the requests within 48 hours.

SOUTH AFRICA SABS STANDARD VERIFIED

Our products have been tested according to European and South African standards. *EN 1990 to EN 1999 – Eurocode / EN 755-2: 2013* - Aluminium and its alloys. Extruded rods, bars, tube and profiles. Mechanical properties / *SANS 10160-1: basis of structural design and actions for buildings and industrial structures - part 1: basis of structural design / SANS 10160-2: basis of structural design and actions for buildings and industrial structures - part 2: self-weight and imposed loads / SANS 10160-3: basis of structural design and actions for buildings and industrial structures - part 3: wind actions.*

EUROPEAN RESEARCH MEETS THE SOUTH-AFRICAN STANDARDS

WELDING PROCEDURE
SPECIFICATION CERTIFICATE



CERTIFICATE OF COMPLIANCE
WITH UNI EN 795:2012 & TS 16415



ISO 9001
& ISO 14001 CERTIFICATES



Management System
ISO 9001:2008



www.tuv.com
ID 9105073334



Management System
ISO 14001:2004

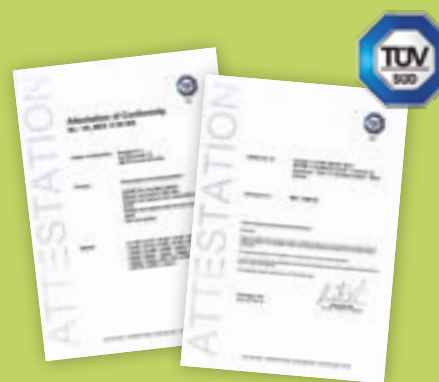


www.tuv.com
ID 9105073334

TÜV GS CERTIFICATES FOR AIR
CONDITIONERS SUPPORTS



CERTIFICATES OF CONFORMITY
STRUCTURES FOR PHOTOVOLTAIC SYSTEMS

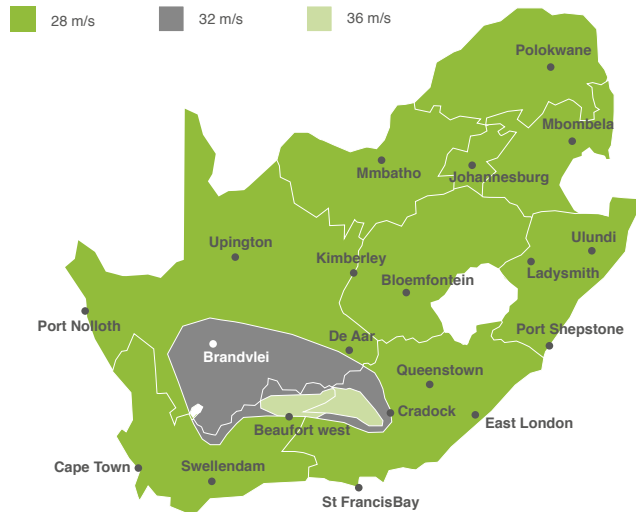










N.B. 2008



Welding certification

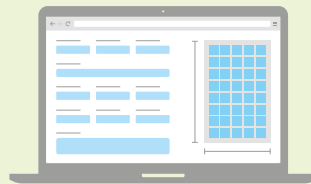
YOUR PHOTOVOLTAIC SYSTEM FIRST STEP: THE WIND



	CODE	SPAN 28/MS	SPAN 32/MS		CODE	SPAN 28/MS	SPAN 32/MS
	30101	1000 mm	800 mm		30105	1200 mm 1600 mm	800 mm
	30102	1200 mm 1600 mm	800 mm		30106	932 mm	699 mm
	30103	1200 mm 1600 mm	800 mm		40102	1600 mm	1600 mm
	30104	1200 mm 1600 mm	800 mm		40103	1600 mm	1600 mm

STANDARD ANALISYS

To verify our systems, we have conducted numerical analysis with the FEM method (Finite Element Method) used to study the mechanical behaviour of the elements. In addition, the Compliance Systems in their application field we have performed CFD analysis (Computational Fluid Dynamics). Thanks to these analysis we are able to check in detail the loads required for fixing through the use of ballasted systems.



PLANT CONFIGURATOR

Available online our configurator for photovoltaic mounting systems
<http://configurator.rodigas.it>

SECOND STEP: OUR SOLUTION



DOMESTIC



INDUSTRIAL



FLAT





DOMESTIC

MK001 >

ROOF TILE
PV mounting system

30104
LS400215

Roof tile fixing support



material Stainless Steel AISI 304

weight 0,61 kg

packaging 10 Pcs

QUALITY



Attestation of Conformity



Management System
ISO 9001:2008



www.tuv.com
ID: 9105973334



Management System
ISO 14001:2004



www.tuv.com
ID: 9105972334



For the installation you need Profiles / pre-assembled clamps



10101
LS145420

Pack 4 bars



10201
LS106500

Pack 10 pcs



10202
LS106600

Pack 10 pcs

To install four modules

10101 2 Profiles length 4200 mm

10201 4 Universal lateral clamps

10202 6 Universal central clamps

30104 8 Roof tile fixing support

span suggested 1200 mm

< MK002

ROOF TILE
PV mounting system

30105
LS340284
Roof tile fixing support



material	Stainless Steel AISI 304
weight	0,64 kg
packaging	10 Pcs



Online
plant configurator

For the installation you need
Profiles / pre-assembled clamps



10101
LS145420

Pack 4 bars



10201
LS106500

Pack 10 pcs



10202
LS106600

Pack 10 pcs

To install four modules

- 10101** 2 Profiles length 4200 mm
- 10201** 4 Universal lateral clamps
- 10202** 6 Universal central clamps
- 30105** 8 Roof tile fixing support

span suggested 1200 mm

QUALITY



Attestation of Conformity



Management
System
ISO 9001:2008



www.tuv.com
ID: 9105079334



Management
System
ISO 14001:2004



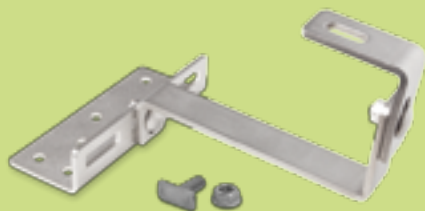
www.tuv.com
ID: 9105079334

MK003 >

ROOF TILE
PV mounting system

30111
LS430111

Roof tile fixing support



material	Stainless Steel AISI 304
weight	0,86 kg
packaging	10 Pcs

QUALITY



Attestation of Conformity



Management System
ISO 9001:2008



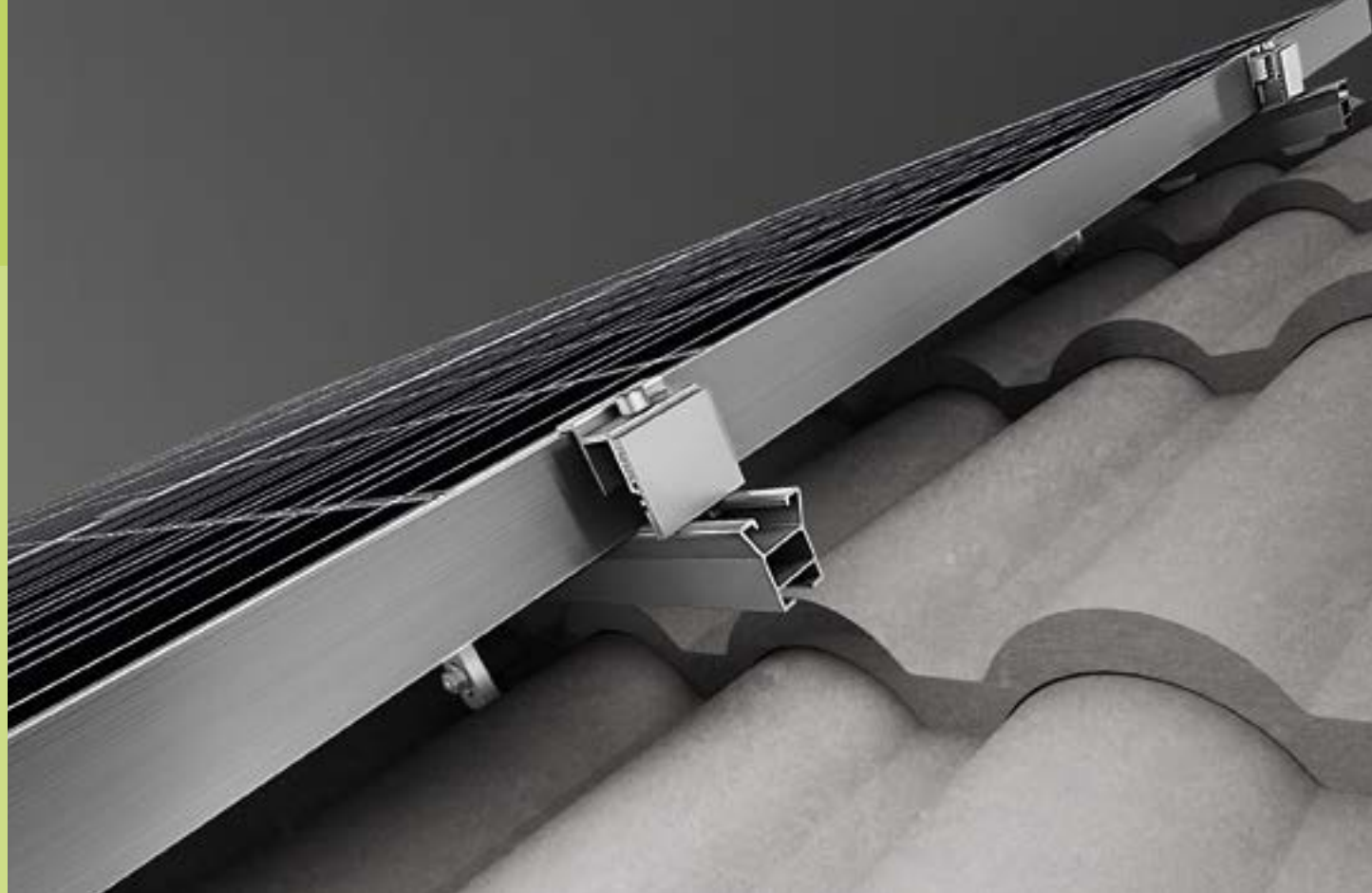
www.tuv.com
ID: 9105073334



Management System
ISO 14001:2004



www.tuv.com
ID: 9105073334



For the installation you need Profiles / pre-assembled clamps



10101
LS145420

Pack 4 bars



10201
LS106500

Pack 10 pcs



10202
LS106600

Pack 10 pcs

To install four modules

10101	2 Profiles length 4200 mm
10201	4 Universal lateral clamps
10202	6 Universal central clamps
30111	8 Roof tile fixing support

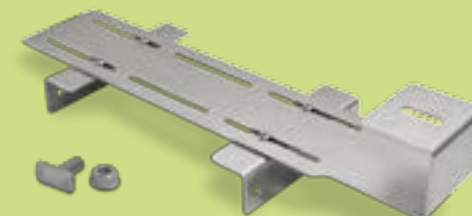
span suggested 1200 mm



< MK004

SLATES ROOF
PV mounting system

30312
LS300465
Slates tile support



material	Stainless Steel AISI 304
weight	0,86 kg
packaging	10 Pcs



Online
plant configurator

For the installation you need Profiles / pre-assembled clamps



10101
LS145420

Pack 4 bars



10201
LS106500

Pack 10 pcs



10202
LS106600

Pack 10 pcs

To install four modules

10101	2 Profiles length 4200 mm
10201	4 Universal lateral clamps
10202	6 Universal central clamps
30312	10 Slates tile support

span suggested 1200 mm

QUALITY



Attestation of Conformity



Management System
ISO 9001:2008



www.tuv.com
ID: 9105079334



Management System
ISO 14001:2004



www.tuv.com
ID: 9105079334





INDUSTRIAL

MK005 >

KLIP LOK
PV mounting system

30106
LS700340

Support for klip-lok roof



material	Electro galvanized steel
weight	0,31 kg
packaging	40 Pcs

QUALITY



Attestation of Conformity



Management System
ISO 9001:2008



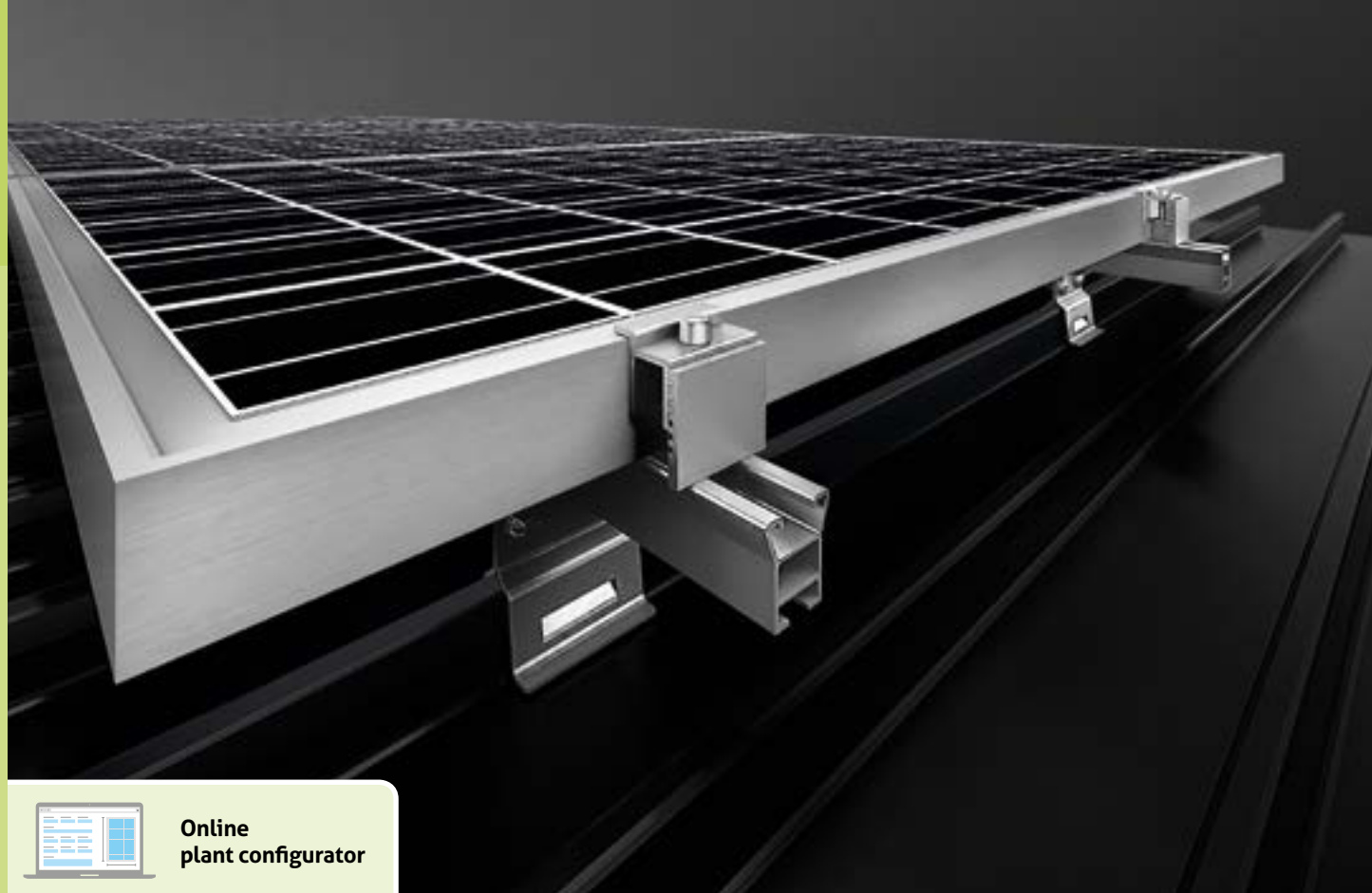
www.tuv.com
ID: 9105073334



Management System
ISO 14001:2004



www.tuv.com
ID: 9105073334



Online
plant configurator

For the installation you need
Profiles / pre-assembled clamps



10101
LS145420

Pack 4 bars



10201
LS106500

Pack 10 pcs



10202
LS106600

Pack 10 pcs

To install four modules

10101 2 Profiles length 4200 mm

10201 4 Universal lateral clamps

10202 6 Universal central clamps

30106 10 Support for klip-lok roof

span suggested 932 mm



< MK006

KLIP LOK
PV mounting system

30106
LS700340

Support for Klip-lok metal roof



material	Electro galvanized steel
weight	0,31 kg
packaging	40 Pcs

QUALITY



Attestation of Conformity



Management System
ISO 9001:2008
www.tuv.com
ID: 9105079334



Management System
ISO 14001:2004
www.tuv.com
ID: 9105079334



For the installation you need Profiles / pre-assembled clamps



30108
LSK102

Pack 40 pcs



30107
LSK101

Pack 40 pcs

To install four modules

- 30108** 4 Universal lateral clamps
- 30107** 6 Universal central clamps
- 30106** 10 Support for klip-lok roof

span suggested 699 mm

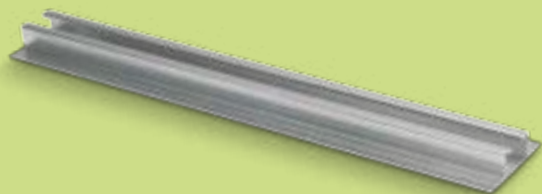
landscape installation

MK007 >

TRAPEZOIDAL
PV mounting system

10102
LS165420

Profile for PV modules



material Aluminium

weight 2,52 kg

packaging 4 Bars

QUALITY



Attestation of Conformity



Management System
ISO 9001:2008



www.tuv.com
ID: 9105073334



Management System
ISO 14001:2004



www.tuv.com
ID: 9105073334



For the installation you need

Profiles / pre-assembled clamps



10201
LS106500

Pack 10 pcs



10202
LS106600

Pack 10 pcs

To install four modules

10102 2 Profiles length 4200 mm

10201 4 Universal lateral clamps

10202 6 Universal central clamps

fixing span suggested 800 mm

< MK008

TRAPEZOIDAL
PV mounting system

30101
LS500472
Support for metal roof



material	Stainless Steel AISI 304
weight	0,04 kg
packaging	10 Pcs



Online
plant configurator

For the installation you need Profiles / pre-assembled clamps



10101
LS145420

Pack 4 bars



10201
LS106500

Pack 10 pcs



10202
LS106600

Pack 10 pcs

To install four modules

10101	2 Profiles length 4200 mm
10201	4 Universal lateral clamps
10202	6 Universal central clamps
30101	12 Support for metal roof

span suggested 800 mm

QUALITY



Attestation of Conformity



Management
System
ISO 9001:2008



www.tuv.com
ID: 9105079334



Management
System
ISO 14001:2004



www.tuv.com
ID: 9105079334

MK009 >

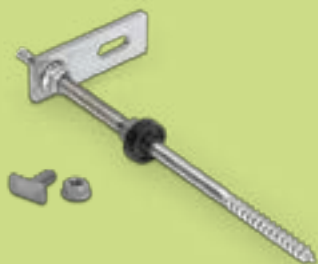
ONDULATED
PV mounting system

30102
LS530210

30112
LS500210

30102 Double thread screw 12x300 mm

30112 Double thread screw 10x200 mm



material Stainless Steel AISI 304

weight 0,38 kg

packaging 40 Pcs

QUALITY



Management System
ISO 9001:2008



www.tuv.com
ID: 9105073334



Management System
ISO 14001:2004



www.tuv.com
ID: 9105073334



Online
plant configurator

For the installation you need Profiles / pre-assembled clamps



10101
LS145420

Pack 4 bars



10201
LS106500

Pack 10 pcs



10202
LS106600

Pack 10 pcs

To install four modules

10101 2 Profiles length 4200 mm

10201 4 Universal lateral clamps

10202 6 Universal central clamps

30102
30112 8 Double thread screw

span suggested 1200 mm



**You can use with
pre-assembled central clamps**



10202
LS106600

Pack 10 pcs



30107
LSK101

Pack 40 pcs

About our clamps

Our pre-assembled clamps, final and central, are made in aluminium and stainless steel to be compatible with the frames of the pv panels. The clamps are designed to fix pv panels with thickness between 30 and 50 mm.

Technical department

Our technical department could assist you for enquiries of offer, for designing customized systems or for any request of further information about our products

< 20112

**GROUNDING DEVICES
PV mounting system**

**20112
LS903**

Earth bonding bracket



material	Stainless Steel AISI 304
weight	0,04 kg
packaging	10 Pcs

QUALITY



Attestation of Conformity



Management System
ISO 9001:2008



www.tuv.com
ID: 9105079334

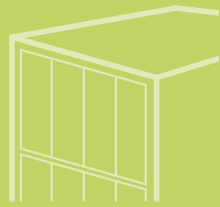


Management System
ISO 14001:2004



www.tuv.com
ID: 9105079334





FLAT

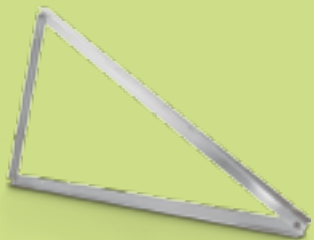
MK010 >

FLAT PORTRAIT
PV mounting system

40103

LSTE14001530

Adjustable triangular support
15-20-25-30° - 1400 mm



material Aluminium
weight 3,87 kg
packaging 6 Pcs

40109

LSZTE 250

Concrete
ballast



material concrete
weight 25,00 kg
packaging 1 Pcs

QUALITY



Attestation of Conformity



Management System
ISO 9001:2008

www.tuv.com
ID: 9105073334



Management System
ISO 14001:2004

www.tuv.com
ID: 9105073334



40104

LSCVP1650

Flat cross-beam



material Aluminium
weight 0,71 kg
packaging 4 Pcs



For the installation you need Profiles / pre-assembled clamps



10101
LS145420

Pack 4 bars



10201
LS106500

Pack 10 pcs



10202
LS106600

Pack 10 pcs

To install four modules

10101 2 Profiles length 4200 mm
10201 4 Universal lateral clamps
10202 6 Universal central clamps
40103 3 Triangular support

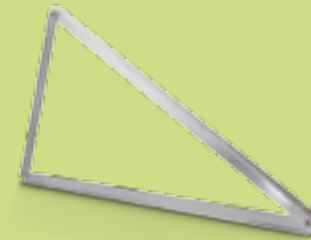
span suggested 1600 mm



MK011 >

FLAT LANDSCAPE
PV mounting system

40102
LSTE11901530
Adjustable triangular support
15-20-25-30° - 1190 mm



material	Aluminium
weight	2,70 kg
packaging	6 Pcs

40109
LSZTE 400
Concrete
ballast



material	concrete
weight	25,00 kg
packaging	1 Pcs

QUALITY



Attestation of Conformity



Management System
ISO 9001:2008
www.tuv.com
ID: 9109073334



Management System
ISO 14001:2004
www.tuv.com
ID: 9109073334

40104
LSCVP1650
Flat cross-beam

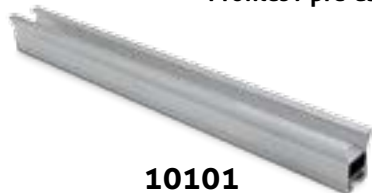


material	Aluminium
weight	0,71 kg
packaging	4 Pcs



Online
plant configurator

For the installation you need Profiles / pre-assembled clamps



10101
LS145420

Pack 4 bars



10201
LS106500

Pack 10 pcs



10202
LS106600

Pack 10 pcs

To install four modules

- 10101** 4 Profiles lenght 4200 mm
- 10201** 4 Universal lateral clamps
- 10202** 6 Universal central clamps
- 40102** 5 Triangular support
- 20106** 2 linear connections

span suggested 1600 mm

< MK012

FLAT 10° LANDSCAPE
PV mounting system

40101
LSTP100

Roof support 10°



material	Aluminium
weight	1,73 kg
packaging	10 Pcs

QUALITY



Management
System
ISO 9001:2008



www.tuv.com
ID: 9105073334



Management
System
ISO 14001:2004



www.tuv.com
ID: 9105073334



For the installation you need

Profiles / pre-assembled clamps



10201
LS106500

Pack 10 pcs



10202
LS106600

Pack 10 pcs

Why choose this system

Profiles / pre-assembled clamps

It's a reticular system expressly designed for medium-big plants. The system is also suggested for pv plants which need a low ballast load.
Supplied in kit.



◀ MK013

FLAT PERSONALIZED
PV mounting system

20107
LSGPU140

Perpendicular
connection



material	Stainless Steel AISI 304
weight	0,23 kg
packaging	10 Pcs

40106
LSL-195204

Adjustment flange



material	Stainless Steel AISI 304
weight	0,67 kg
packaging	20 Pcs



Online
plant configurator

For the installation you need
Profiles / pre-assembled clamps



10104
LS156420

Pack 4 bars



10203
LS108500

Pack 10 pcs



10204
LS108600

Pack 10 pcs

QUALITY



Management System
ISO 9001:2008

www.tuv.com
ID: 9105073334



Management System
ISO 14001:2004

www.tuv.com
ID: 9105073334



40108
LSI-060185

Ground fixing flange



material	Stainless Steel AISI 304
weight	0,40 kg
packaging	20 Pcs

20101
LS500531-100
Fixing rivet
with seal



material Aluminium
weight 0,20 kg
packaging 100 Box

20102
LS500520-100
Fixing
screw



material Stainless Steel
Aisi 304
weight 0,67 kg
packaging 100 Box

20103
LSFB03010
Self-adhesive sealing
tape



material Butylene
weight 1,00 kg
packaging 1 Roll 10 mt

20104
B134-100
Anti-theft
ball



material Stainless Steel
Aisi 304
weight 0,12 kg
packaging 100 Box

20106
LSGLI145
Linear
connection



material Stainless Steel
Aisi 304
weight 0,09 kg
packaging 10 Pcs

20107
LSGPU140
Perpendicular
connection



material Stainless Steel
Aisi 304
weight 0,23 kg
packaging 10 Pcs

20108
LSGPR140
Perpendicular
connection



material Stainless Steel
Aisi 304
weight 0,18 kg
packaging 10 Pcs

20109
LSK105
Big hammer
head bolt



material Stainless Steel
Aisi 304
weight -
packaging 12 Pcs

20110
LS140
Small hammer
head bolt



material Stainless Steel
Aisi 304
weight -
packaging 10 Pcs

20115
LS501210
Inox plate
for screw



material Stainless Steel
Aisi 304
weight -
packaging 10 Pcs

10103
LS146420
Profile
for PV modules



material Aluminium

weight 4,45 kg

packaging 4 Bars

10104
LS156420
Profile
for PV modules



material Stainless Steel
Aisi 304

weight 6,59 kg

packaging 4 Bars

10203
LS108500
Universal lateral
clamp



material Aluminium/
stainless steel

weight 0,10 kg

packaging 10 Pcs

10204
LS108600
Universal central
clamp



material Aluminium/
stainless steel

weight 0,07 kg

packaging 10 Pcs

30309
LSPD160
Support
for metal roof



material Aluminium

weight 0,05 kg

packaging 40 Pcs

30310
LS500471
Support
for metal roof



material Stainless Steel
Aisi 304

weight 0,05 kg

packaging 40 Pcs

30311
LSGLI140
Support
for metal roof



material Aluminium

weight 0,03 kg

packaging 40 Pcs

20105
LSGLI140
Linear
connection



material Stainless Steel
Aisi 304

weight 0,28 kg

packaging 10 Pcs

EXTRA WIND ACCESSORIES



MS 230 / MS 235 / MS 257 / MS 214
Sliding brackets



actual carrying capacity 420 kg

declared carrying capacity 140 kg



Adjustable rear foot



Pre-assembled



Wall fixing kit



Permanent marking



Insulating washers



Patented levelling system



Mounting instructions



Traceability

PB 300
Embedding box in plastic



Optional levelling system



Discharge on two sides



Suitable predrilled holes



Outer lid

MS 105 / MS 106 / MS402 / MS503

Welded Brackets



actual carrying capacity 420 kg

declared carrying capacity 140 kg



Wall fixing kit



Insulating washers



Permanent marking



Certified welds



Packaging



Galvanized



Stainless steel



Electrogalvanised

SP 700 / SP 740 / SP 750

Floor support



actual carrying capacity 420 kg

declared carrying capacity 140 kg



Optional anti-vibration foot



Products warranted & permanently marked with our name



Insulating washers



Traceability



For further informations visit www.rodigas.it

WE SUPPORT SKATEISTAN

SOCIAL PROJECTS

We support Skateistan, a South Africa non-profit Organization who uses skateboarding as a tool for Empowerment. Skateboarding is simply "the hook" to engage hard-to-reach young people. Skateistan's development aid programs work with growing numbers of marginalized youth through skateboarding, and provide them with new opportunities in cross-cultural interaction, education, and personal empowerment programs.

www.skateistan.co.za



CASE HISTORY

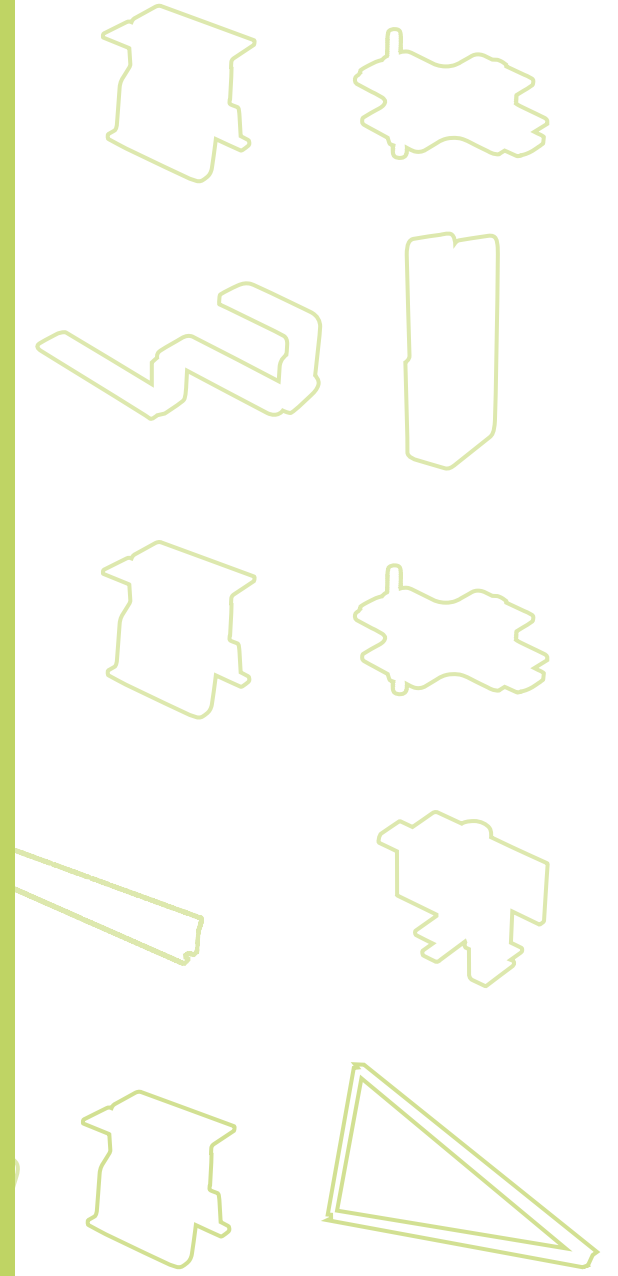
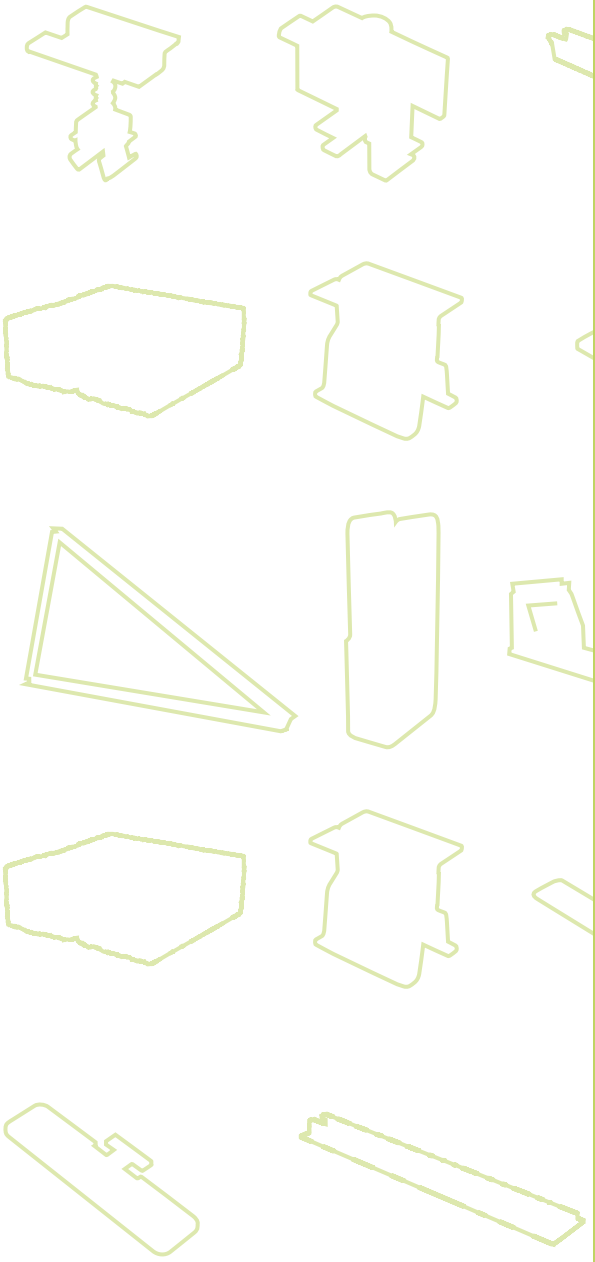




The continuous relationship with our customers and installers allows us to improve our production and study new solutions. These photos show some works realized with our photovoltaic mounting system.

INDEX BY CODE

10102	16	30102	18
10103	27	30103	10
10104	27	30104	8
10203	27	30105	9
10204	27	30106	14-15
20101	26	30309	27
20102	26	30310	27
20103	26	30311	27
20104	26	30312	11
20105	27	40101	24
20106	26	40102	23
20107	25-26	40103	22
20108	26	40104	22
20109	26	40106	25
20110	26	40108	25
30101	17	40109	22-23



Lizard Manufacturing SA (PTY) LTD

Postal address

PO Box 471 - Linmeyer Johannesburg
Gauteng 2105

Office South Africa

+27 (11) 08 37224

www.lizardsouthafrica.co.za

info@lizardsouthafrica.co.za

Official supplier

