



**ASCENT**  
IBR

# RAIL-LESS METAL MOUNTING SYSTEM

**IBR**

---

Version 1



# General information

ASCENT provides a new, rail-less mounting system developed as universal PV mounting systems for IBR roof sheeting. The system includes aluminium profiles with special hollow structures and connections, making it easy to install.

## Ascent products are:

- Easy to install
- Innovative and engineered to speed up installation time
- Backed by a 10-year warranty and AS/NZS1170.2.2011 AMDT 3 -2012 compliant

## Applications:

- Commercial and residential buildings

## Features:

- Extruded from anodised Al 6005-T6 (aluminium)
- Can be preassembled, making installation quick and easy
- Suitable for a variety of conditions and for use with current, popular PV panels
- Inherent corrosion resistance results in lower maintenance and extended product life
- 10-year limited warranty

## Material standard:

Material	Yield strength (MPa)	
	Tensile Strength	Yield Strength
Al 6005-T6	295	263

## Product Information

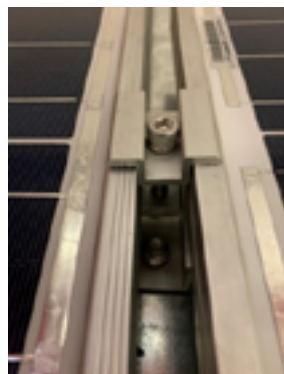
This ASCENT product is a clamping system designed to fit PV panels to Inverted Box Rib (IBR) metal roofing material. The clamping systems consist of end clamps and mid clamps that are designed to fit into a base profile, fixing the panels in place. An earthing clip is also included in the system.



*Figure 1 ASCENT mounting structure for IBR roofing sheets*





### Product features

- Can withstand windy conditions of up to 35m/s
- Can be used with most 35mm & 40mm frame modules
- Particularly suited to large rooftop installations



*Figure 2 ASCENT IBR mounting using the mid clamp to clamp 2 panels and the end clamp to clamp the panels at the end of a string*

# Components

Part Name	ASCENT Part Number	Picture
ASCENT Rail-less Rooftop IBR Profile	A2001030	
ASCENT Rail-less Rooftop Mid clamp IBR	A2001000	
ASCENT Rail-less Rooftop End clamp IBR	A2001010	
ASCENT Type A Earthing Clip	A0001010	

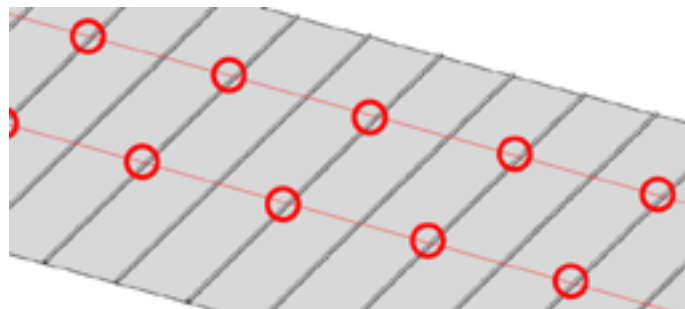
# Installation manual

## Tools required for this installation:

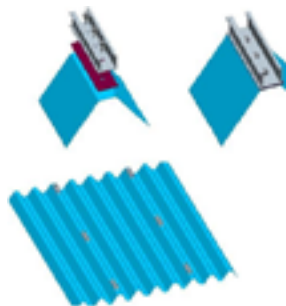
8mm Allen key or hexagonal driver bit	Hexagonal file kit (For ST6.3 self tapping screw)	Torque wrench (For M8 bolts or nuts)
Monakey spanner	Wooden hammer	Drill tools 5mm
Power tool	Measure tape	Rope

## Installation instructions

1. Ensure that the parts fit the roofing style – this product is designed for IBR MetalRoof Sheeting.
2. Mark the positions of the clamps (A2001030) according to the drawings and make sure all the clamps are installed on the same horizontal line.



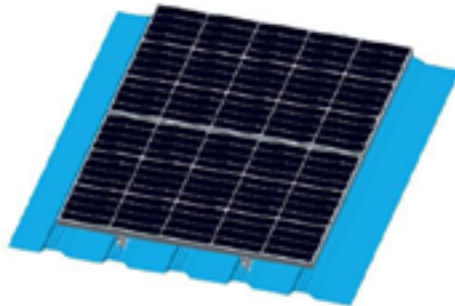
3. Bolt the clamps (A2001030) to the marked positions with self-drilling screws, ensuring that the EPDM rubber sealing pad is correctly positioned for a water-tight finish.



4. Set the torque wrench to a value of 8-9Nm. Place the end panel on the first four clamps. Fasten the end clamps (A2001010) to the IBR profile (A2001030) and ensure that the top of the end clamp is tight against the top surface of the panel.
5. Continue by fastening the panels side-by-side using the mid clamps (A2001000), including the earth clips as necessary.



6. Continue for all the panels and clamp positions.



Drawing is for illustrative purposes only, design will differ with other module dimensions.

