

BAJARACK WARRANTY



This Limited Warranty covers BajaRack products and all accessories for a period of 2 years from the date of purchase to the original owner of the product and does not apply once the equipment is sold or transferred to another person.

This Warranty does not cover the cost of removal of reinstallation or the product. BajaRack warrants (subject to conditions listed in this warranty) all products to be free of manufacturing defects in materials and workmanship.

Warranty claim requirements

The claim has to be submitted during the warranty period at the place of purchase or directly at our corporate office located:



BajaRack Adventure Equipment
2275 Michael Faraday Drive, Suite 6
San Diego, CA 92154 USA
Phone Number: 760-621-0171

On your product you will find a label with a serial number. If you remove this label, please save the serial number in a safe place. You will need it if you want to make a warranty claim in the future. Any cost incurred to transport the defective product "to and from" will be the customer's responsibility.



Warranty resolution

Subject to BajaRack inspection of the product, the company will remedy defects in materials and/or workmanship by repairing or replacing, at BajaRack's option, the defective product without charge for parts or labor, subject to the limitations and exclusions described in this warranty. BajaRack may elect, at its option, not to repair or replace a defective product, in which case BajaRack will issue to the original retail purchaser, at BajaRack's option, either a full refund equal to the purchase price paid for the product, or a credit to be used toward the purchase of new BajaRack products or accessories.

Limitations of Liability

BajaRack is not liable for damage caused by shipping or transport of BajaRack products. It is the responsibility of the original retail purchaser to inspect all products prior to acceptance and to notify the shipping carrier in a timely manner so that any claim for damages can be made. If timely notification to the shipping carrier by the original retail purchaser is not made regarding damage caused during the transport of the product, a claim for damages may not be possible, and all liability falls to the original retail purchaser. This warranty does not apply if accident, abuse, misuse, collision, overloading, modification, misapplication, improper installation, or improper service has damaged the Product.

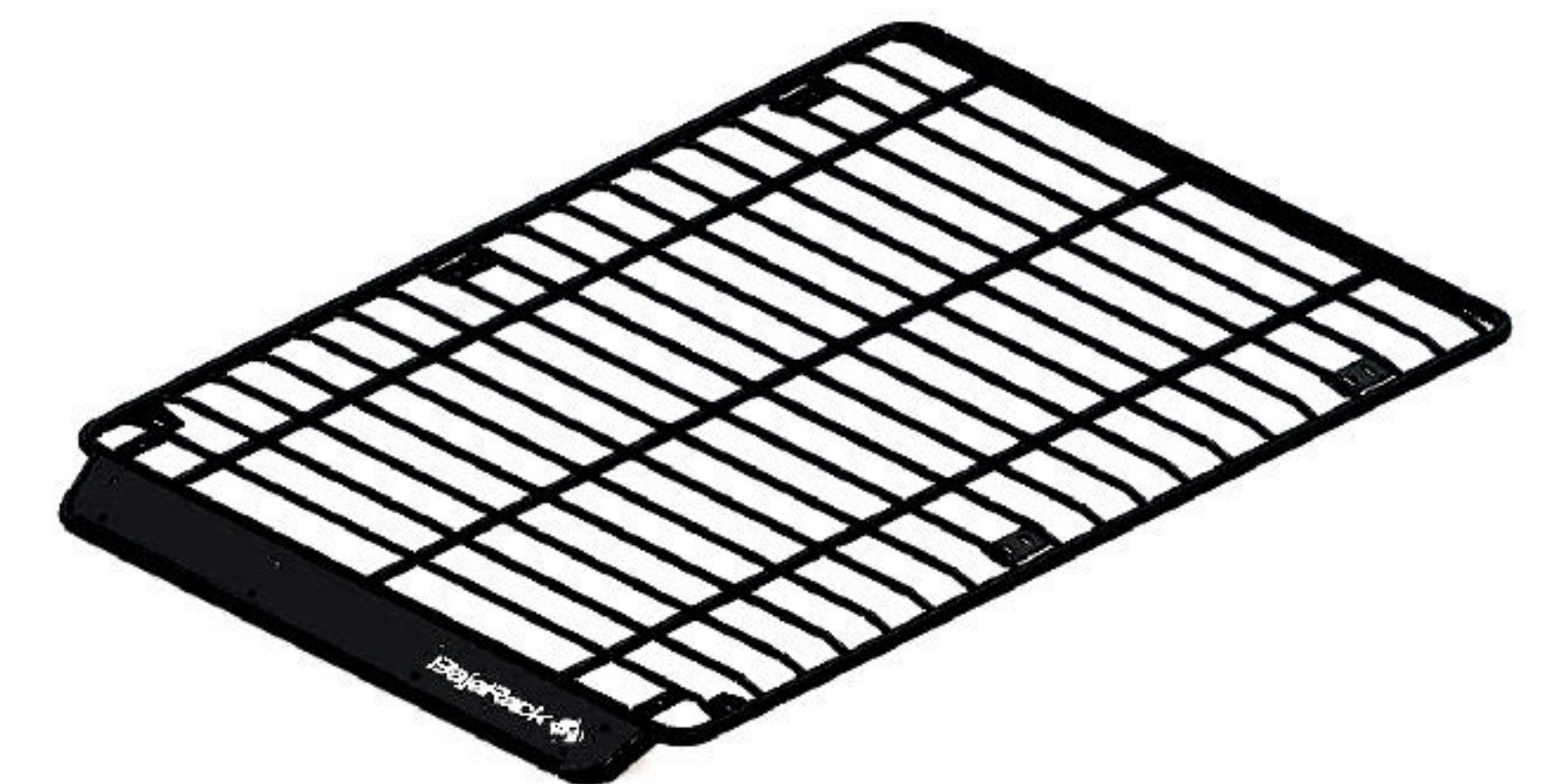
BAJARACK SHALL NOT BE LIABLE FOR ANY DIRECT, INDIRECT, CONSEQUENTIAL, INCIDENTAL, SPECIAL, EXEMPLARY, OR PUNITIVE DAMAGES OR FOR ANY OTHER DAMAGES OF ANY KIND OR NATURE [NO PERIOD.] (INCLUDING, BUT NOT LIMITED TO, LOST PROFITS, DOWN TIME OR LOSS OF USE) UNDER ANY LEGAL THEORY, EVEN IF BAJARACK WAS ADVISED OF THE POSSIBILITY OF SUCH DAMAGES. BAJARACK'S SOLE LIABILITY IS LIMITED TO THE REMEDY SET FORTH ABOVE.

BajaRack reserves the right to change Product design without notice.

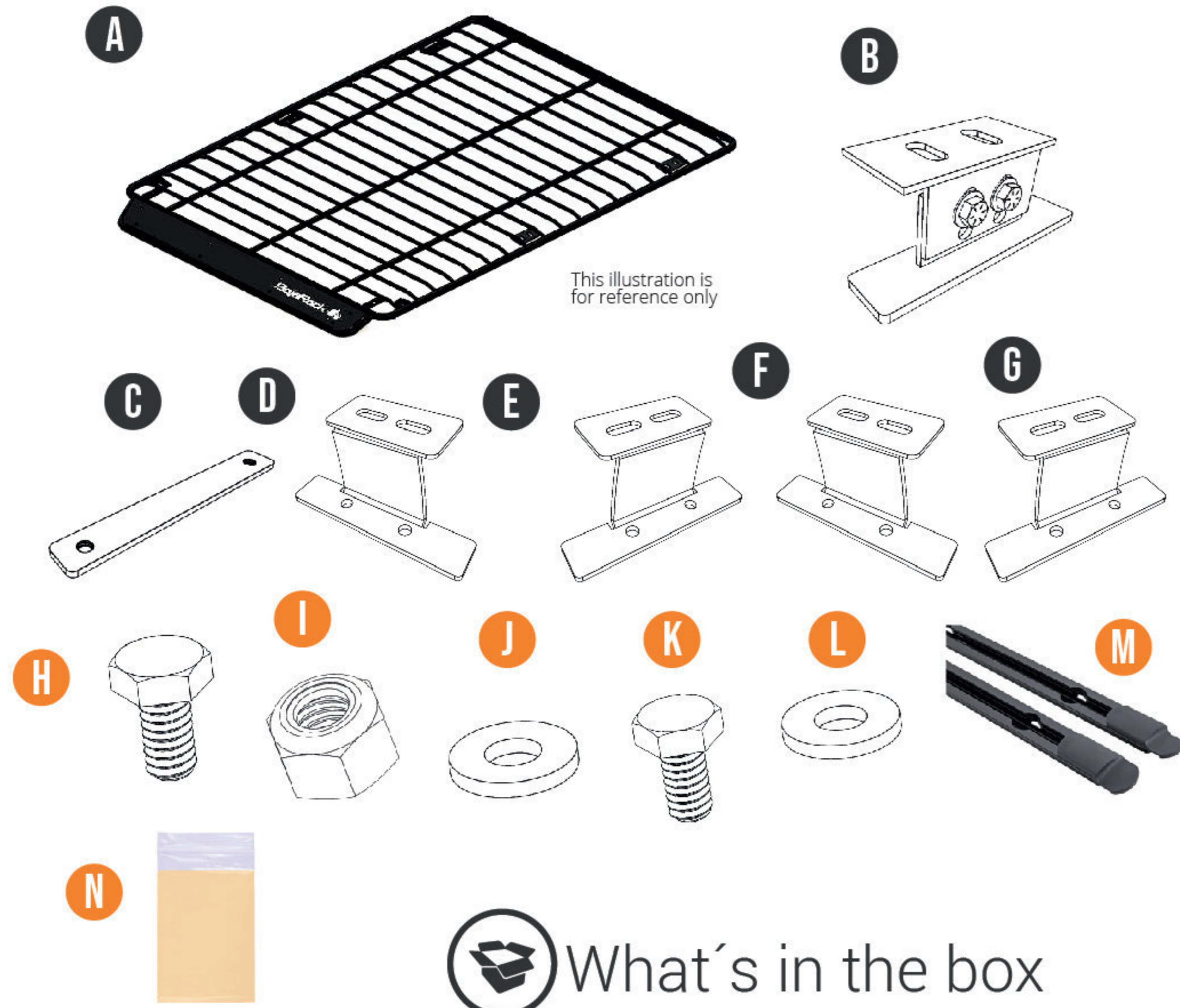


TUNDRA CREW MAX

(2007-2019)
UTILITY RACK



RACK COMPONENTS



This illustration is for reference only

What's in the box

A) Rack	(1x)	H) 5/16"-18 x 3/4" Hex Cap Screw Stainless Steel	(14x)
B) AD & AP Adjustable brackets	(2x)	I) 5/16" -18 Nylon Insert Lock Nut Stainless Steel	14x)
C) Rail bracket	(4x)	J) 5/16" x 0.75" OD Flat Washer Stainless Steel	(28x)
D) BD bracket	(1x)	K) 1/4" - 20 x 3/4" Hex Cap Screw Stainless Steel	(8x)
E) BP bracket	(1x)	L) 1/4" x 0.625" OD Flat Washer Stainless Steel	(8x)
F) CD bracket	(1x)	M) Track Rhino System RTS533	(1x)
G) CP bracket	(1x)	N) Grease, for use with all bolts with lock nuts	(1x)

Recommended Tools

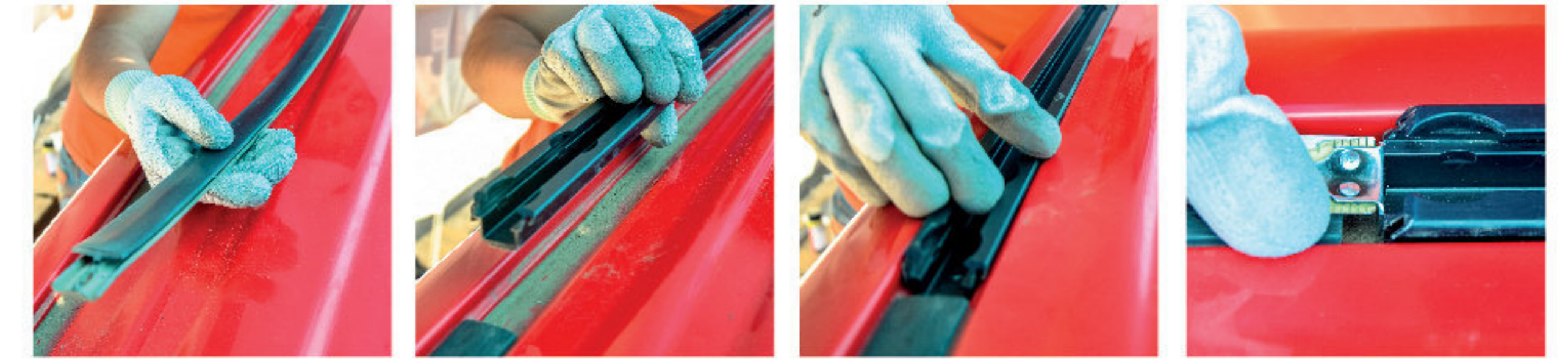
- Riveting gun
- Marker
- Pointed tool
- Rubber hummer
- Drill
- 5mm 3/16" Drill Bit
- 5mm drill stop
- 1 Cold galvanizing paint
- 7/16" wrench for installation
- 1/2" ratchet tool for support brackets intallation
- 1/2" wrench for roof

Tips and recommendations (please read)

- Please Install the Rack with the help of a friend.
- The load limit of your rack is 300lb please do not exceed.
- Your Rack is an accessory; it is not protection for rollovers

INSTALLATION STEPS (RAILS)

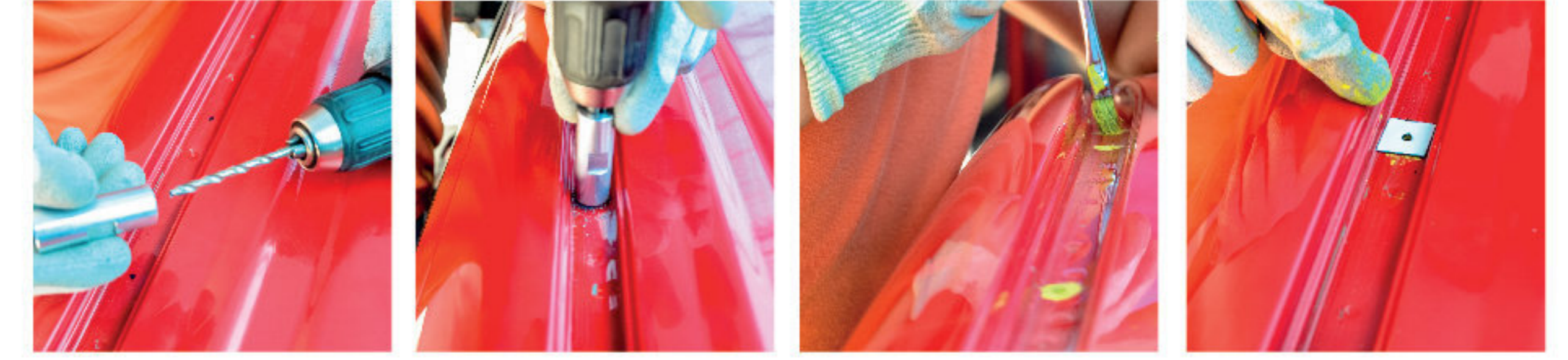
- 1 Remove ditch rubber from the roof of your vehicle.
- 2 Slide in the Rino track system RTS533 (M), Aling the tracks 3 mm (1/8") from the fixed rubber at the REAR of the roof ditch



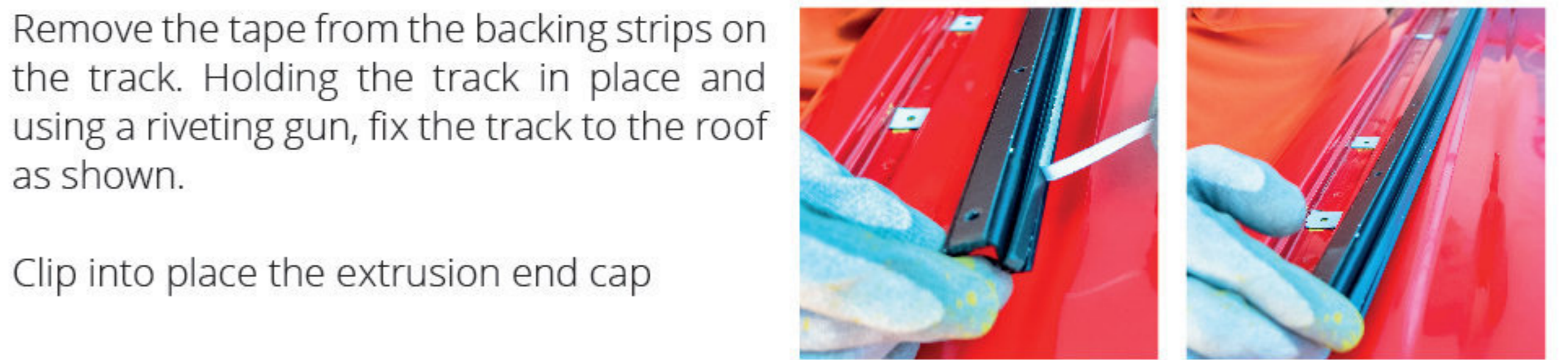
- 3 With the track in place, spot marks all rivet holes in the track mount. There are 7 in total, remove the track and with a pointed tool and rubber hammer hit the spot mark.



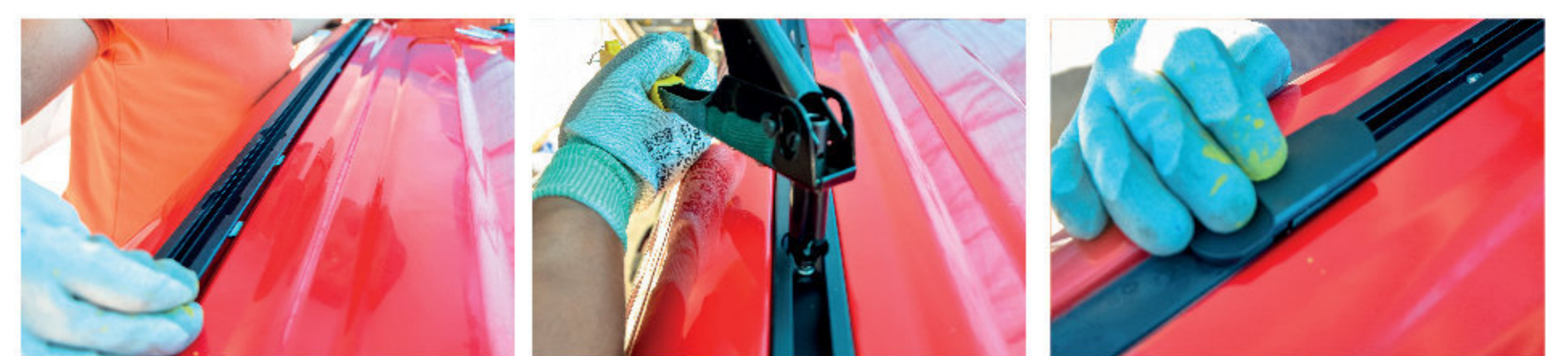
- 4 Using a 5mm 3/16" Drill Bit, drill out all 7 rivet holes. A 5mm drill stop must be used to ensure this not damaged the roof lining below during drilling, use cold galvanizing paint on all 7 drilled holes use a brush. Remove the backing tape from the Butyl Patches. Place over holes drilled. Once in place remove the rest of the protective tape from the top of the patches.



- 5 Remove the tape from the backing strips on the track. Holding the track in place and using a riveting gun, fix the track to the roof as shown.

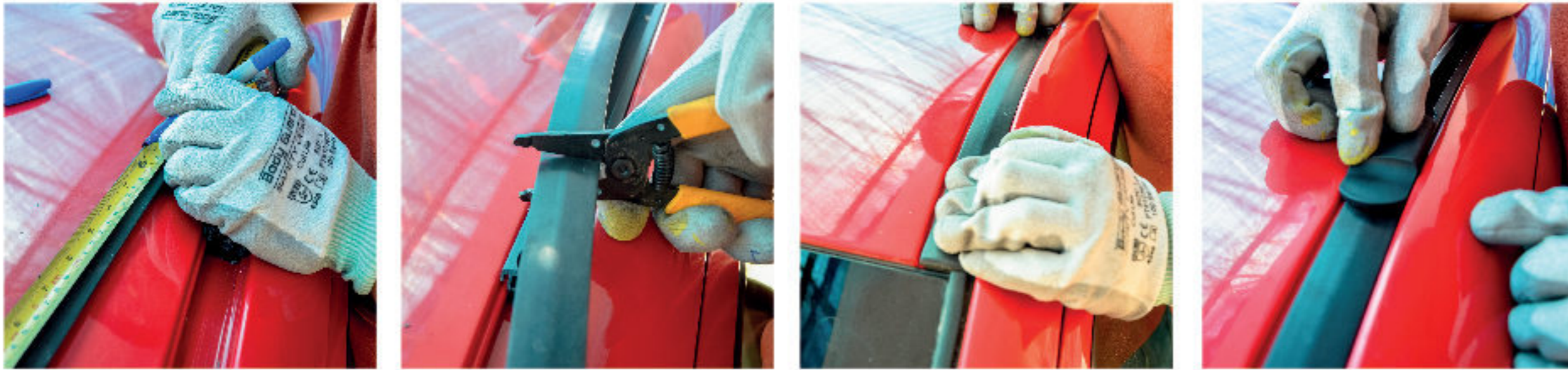


Clip into place the extrusion end cap



INSTALLATION STEPS (RAILS)

- 6** Measure the distance (x) along the roof ditch from the windshield to the front of the track. Using the measurement obtained in the last step (x) cut the ditch rubber to size and replace back on to the vehicle. It will slip under the end tabs as shown. Clip into place the extrusion end caps.



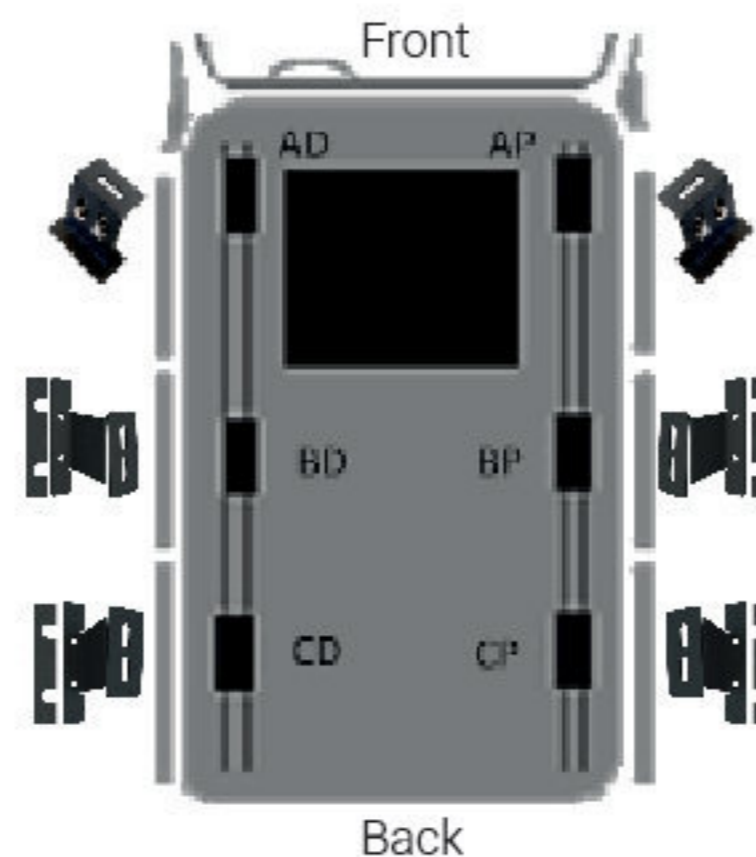
INSTALLATION STEPS (RACK)



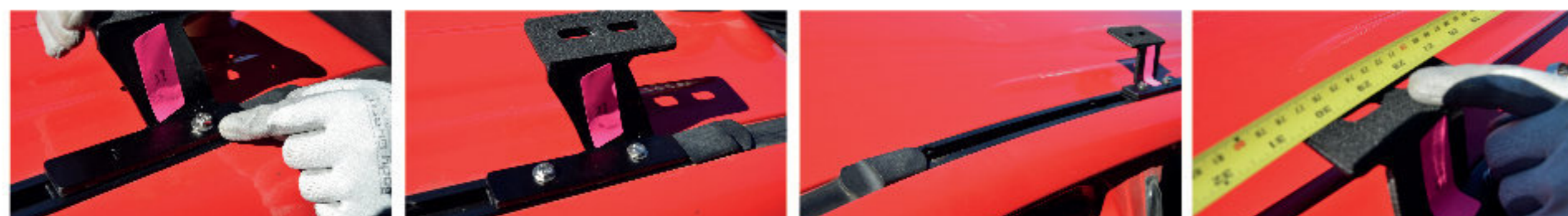
- 1** Identify the 4 rail bracket (C) and all 6 roof brackets (B to G). See the figure for the location of the brackets. Once you have them in place, peel off the labels.

Note: All the rail brackets (c) are equal. The brackets AD & AP (parts B) will be installed after placing the rack on the other brackets (D to G).

- 2** Slide in the two rail bracket (C) into the Rhino track. Be sure to slide two (2) rail brackets (C) per side. All four are the same. Clip into place the extrusion end cap.



- 3** Identify three driver side brackets B)AD, D)BD, F)CD place them over the rail bracket (C), using Hex Cap Screw (K) and Flat Washer (L) hand tighten together, slide brackets through the Rhino track to a required position. (29" center to center on top bracket). Tighten Hex Cap Screw (K) using a wrench. Do the same process for the passenger side B)AP, E)BP, G)CP.



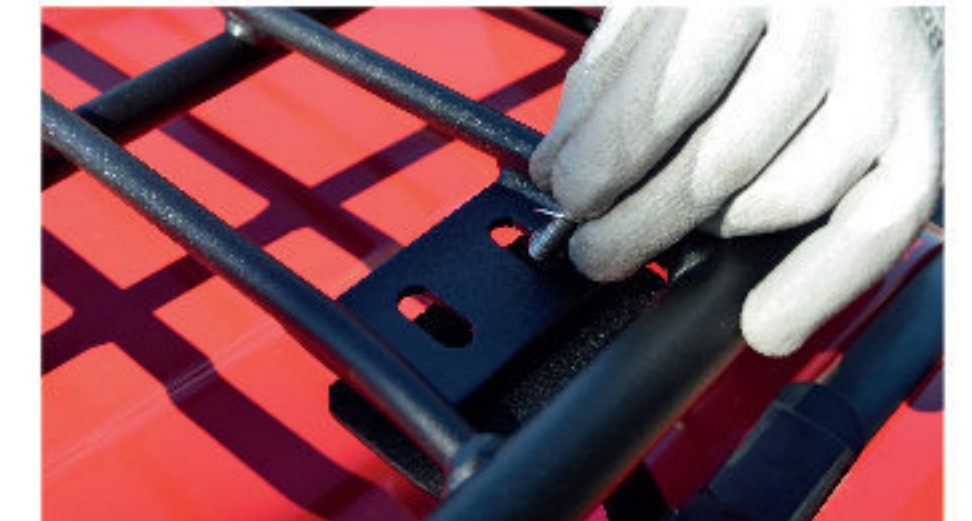
INSTALLATION STEPS (RACK)

NOTE: Add grease (N) to the thread of each Hex Cab Screw

- 4** With the help of a friend, place the rack (A) on top of brackets.



- 5** Align the slotted plates of the brackets with the slotted plates of your rack by sliding back and forward or side to side.

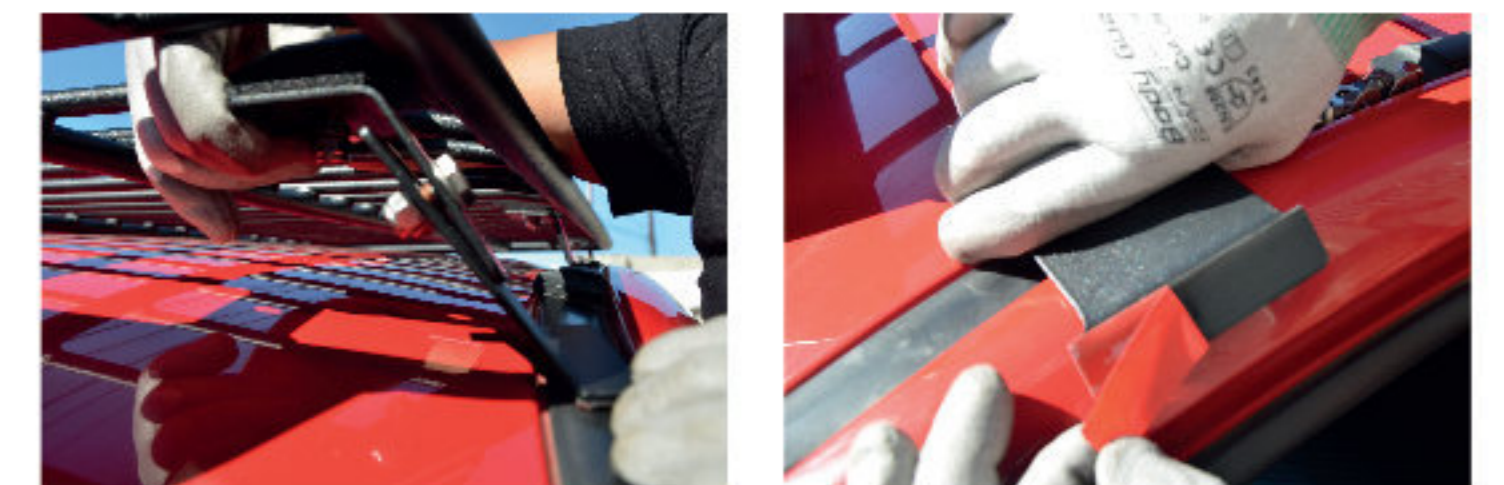


- 6** Slide through the holes the Hex Cab Screws (H) Flat Washer (J) and below inserting the washer (J) and nut (I), using the ratchet tool socket and wrench tighten Hex Cab Screw (H) and nut (I).

NOTE: Add grease (N) to the thread of each Hex Cab Screw



- 7** Front adjustable brackets B), align the slotted plates of the brackets with the slotted plates of your rack, slide through the holes the Hex Cab Screws (H) Flat Washer (J) and below inserting the washer (J) and nut (I). Using wrench and ratchet tool tighten Hex Cab Screw (H) and nut (I). **NOTE:** Add grease (N) to the thread of each Hex Cab Screw



NOTE: Adjustable brackets are pre-assembled, remove the plastic on the bottom of the adjustable brackets and place on plastic roof channel trim, these brackets will be installed last.



ENJOY
— YOUR NEW —
BAJARACK
ROOF RACK!

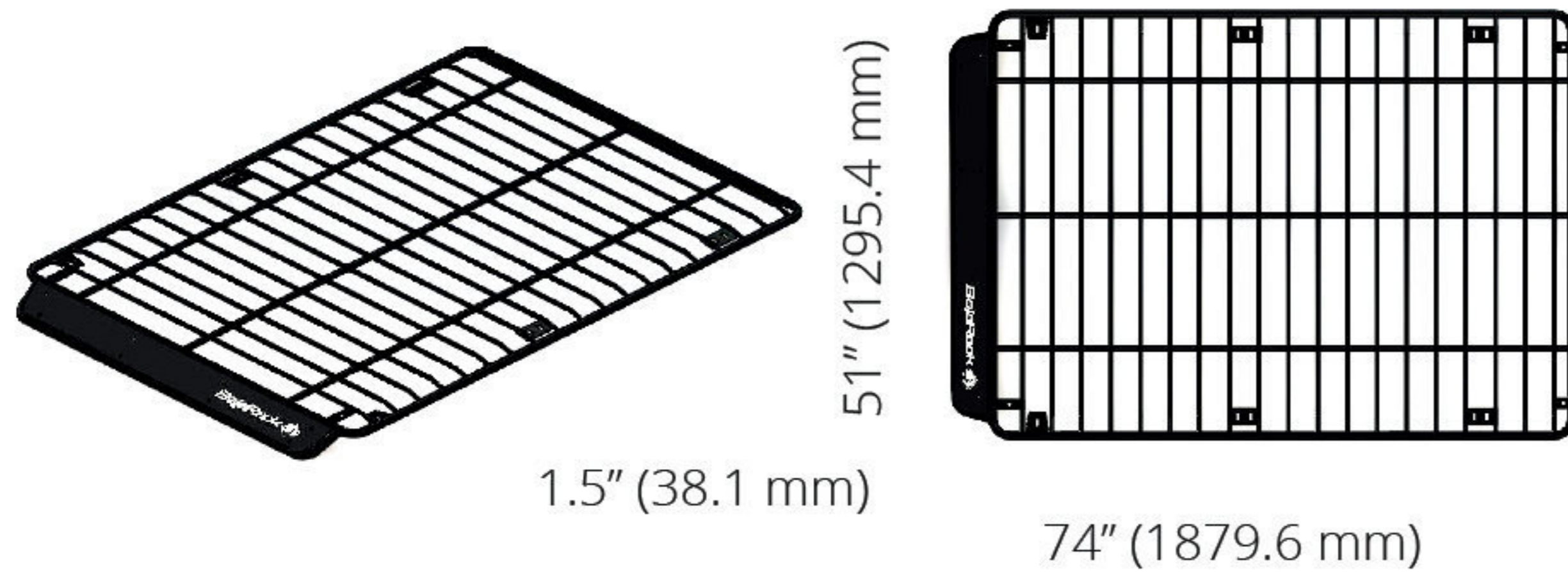


TECHNICAL SPECIFICATIONS

TUNDRA CREW MAX

BR-TYTNDG2-CREWMAX-UT-0

Utility (flat) Rack



This Rack comes as one piece and includes all mounting brackets, stainless steel hardware, and aluminum wind deflector.

Material and Thickness: 1" (25.4mm) 3/4" (19.05mm) and 1/2" (12.7mm) Steel tubing

Top Wind Deflector: .062" (1.57mm) 5050-H32 Aluminum

Finish: Epoxy primer (rust inhibitor) with black powder coating

Rack weight: 72Lb (32.65kg)

Weight Capacity: 400 Lb (181.4 Kg) Static / 200 Lb (90.7 Kg) Dynamic

Measurements: 51" (1295.4 mm) wide x 74" (1879.6 mm)

Long x 1.5" (38.1 mm) tall

Cargo area: 24.79 ft² (2.30 m²)

Mounting method: Roof mounts (2 front adjustable brackets and 4 support brackets)

COMPATIBLE ACCESSORIES



Fuel Can Holder



Axe & Shovel mount for flat racks



Awning mount for flat racks (2 pieces)



Awning mount for flat racks (3 pieces)



Hi-Lift mount for flat racks



Light Clamp mount



Maxtrax mount for flat racks



Tire mount



Tent Plates



Water Can Holder



Yakima & Thule Accessory mount (2 pieces)



Yakima & Thule Accessory mount (4 pieces)