

BAJARACK WARRANTY



This Limited Warranty covers BajaRack products and all accessories for a period of 2 years from the date of purchase to the original owner of the product and does not apply once the equipment is sold or transferred to another person.

This Warranty does not cover the cost of removal of reinstallation or the product. BajaRack warrants (subject to conditions listed in this warranty) all products to be free of manufacturing defects in materials and workmanship.

Warranty claim requirements

The claim has to be submitted during the warranty period at the place of purchase or directly at our corporate office located:



BajaRack Adventure Equipment
2275 Michael Faraday Drive, Suite 6
San Diego, CA 92154 USA
Phone Number: 760-621-0171

On your product you will find a label with a serial number. If you remove this label, please save the serial number in a safe place. You will need it if you want to make a warranty claim in the future. Any cost incurred to transport the defective product "to and from" will be the customer's responsibility.



Warranty resolution

Subject to BajaRack inspection of the product, the company will remedy defects in materials and/or workmanship by repairing or replacing, at BajaRack's option, the defective product without charge for parts or labor, subject to the limitations and exclusions described in this warranty. BajaRack may elect, at its option, not to repair or replace a defective product, in which case BajaRack will issue to the original retail purchaser, at BajaRack's option, either a full refund equal to the purchase price paid for the product, or a credit to be used toward the purchase of new BajaRack products or accessories.

Limitations of Liability

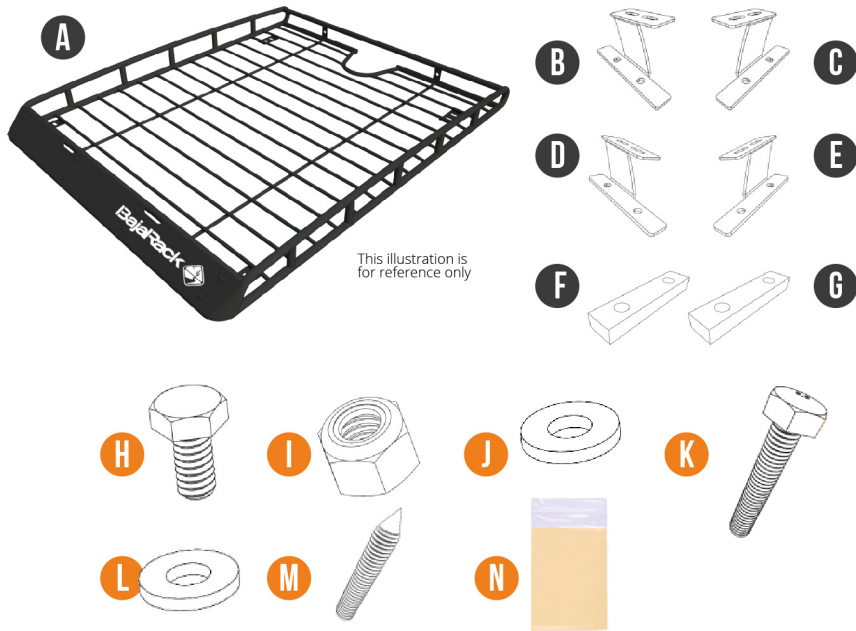
BajaRack is not liable for damage caused by shipping or transport of BajaRack products. It is the responsibility of the original retail purchaser to inspect all products prior to acceptance and to notify the shipping carrier in a timely manner so that any claim for damages can be made. If timely notification to the shipping carrier by the original retail purchaser is not made regarding damage caused during the transport of the product, a claim for damages may not be possible, and all liability falls to the original retail purchaser. This warranty does not apply if accident, abuse, misuse, collision, overloading, modification, misapplication, improper installation, or improper service has damaged the Product.

BAJARACK SHALL NOT BE LIABLE FOR ANY DIRECT, INDIRECT, CONSEQUENTIAL, INCIDENTAL, SPECIAL, EXEMPLARY, OR PUNITIVE DAMAGES OR FOR ANY OTHER DAMAGES OF ANY KIND OR NATURE [NO PERIOD.] (INCLUDING, BUT NOT LIMITED TO, LOST PROFITS, DOWN TIME OR LOSS OF USE) UNDER ANY LEGAL THEORY, EVEN IF BAJARACK WAS ADVISED OF THE POSSIBILITY OF SUCH DAMAGES. BAJARACK'S SOLE LIABILITY IS LIMITED TO THE REMEDY SET FORTH ABOVE.

BajaRack reserves the right to change Product design without notice.



RACK COMPONENTS



This illustration is for reference only

- A) Rack (1x)
- B) AD bracket (1x)
- C) AP bracket (1x)
- D) BD bracket (1x)
- E) BP bracket (1x)
- F) A Spacer (2x)
- G) B Spacer (2x)

What's in the box

- H) 5/16"-18 x 3/4" Hex Cap Screw Stainless Steel (8x)
- I) 5/16"-18 Nylon Insert Lock Nut Stainless Steel (8x)
- J) 5/16" X0.75" OD Flat Washer Stainless Steel (16x)
- K) M6 1 x 35mm Hex Cap Screw Stainless Steel (8x)
- L) 1/4" x 0.625" OD Flat Washer Stainless Steel (8x)
- M) M6 1 x 45mm Special Bolt Stainless Steel (2x)
- N) Grease, for use with all bolts with lock nuts (1x)

Recommended Tools

- 1/2" wrench for installation
- 1/2" socket for support
- 10mm metric wrench for roof brackets intallation
- Torquemeter
- Screw driver (flat)
- Rubber mallet
- Market
- Drill
- 5/16" drill bit
- Cutter

Tips and recommendations (please read)

- Please Install your rack with the help of a friend.
- The load limit of your rack is 300lb, please do not exceed.
- Your Rack is an accessory; it is not protection for rollovers

INSTALLATION STEPS

- 1 Remove the rubber trim located on top of the roof (Fig. 1 & 2). Check the marks under the rubber trim (Fig. 1 & 2). The left side has a blue mark (Fig. 4.1), and the right side has a pink mark (Fig. 4.2).



Fig. 3

Fig. 4.1 & 4.2

Fig. 1

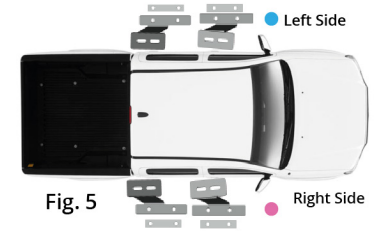


Fig. 5

Note: Figure 5 is a reference to identify the brackets and the color of the marks under the rubber trim.



Fig. 6



Fig. 7

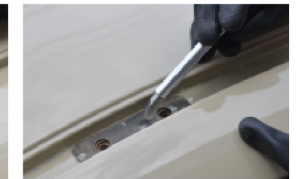


Fig. 8

- 2 Remove the painted tape caps from the threaded inserts (Fig. 6, 7 & 8). The painted tape caps are located below the rubber trim. You will need to remove two painted tape caps per side. Please see Fig. 9 to identify the caps that you'll need to remove (Only the locations marked by green circles).

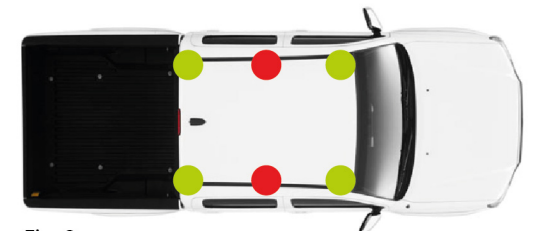


Fig. 9



Fig. 10



Fig. 11



Fig. 12

INSTALLATION STEPS

- 3** Insert the special bolts (M) in the threaded inserts Fig. 10. Replace the rubber trim on the top Fig. 11, then lightly hit bolts/trim with a rubber mallet to make a mark on the rubber trim Fig. 12. Repeat steps 1 to 3 for rubber trim on other side.



Fig. 13

- 4** With the factory rubber trim marked, drill a 5/16" hole in the rubber trim. Repeat for each mark. Fig. 13

NOTE: Be careful drilling the rubber trim, you can use a piece of wood as a base.



Fig. 14

Fig. 15

Fig. 16

Fig. 17

Fig. 18

- 5** Take the rubber trim and turn over as shown in Figures 14 & 15. Put the spacer on the holes (Fig. 16) made in step 4 (See Figure 4 as reference to identify the spacer location) and mark the spacer as shown in Figures 17 & 18.



Fig. 19

Fig. 20

Fig. 21

Fig. 22

- 6** After marking the spacer under the rubber trim, you'll need to cut with a knife the marked area (see Figures 19 to 22 as reference). With cutting pliers you'll cut the ends as shown in Fig. 23 and then cut the excess with a knife per Figs. 24 & 25. Repeat steps 5 and 6 for each mark.



Fig. 23

Fig. 24

Fig. 25

INSTALLATION STEPS

- 7** Put the spacer according to Fig. 4 on the threaded inserts (Fig. 26) and replace the rubber trim (Fig. 27). (Remember that the rubber trim are identified with a small circle in the front part, blue mark is for the left side and pink mark is for the right side).



Fig. 26

Fig. 27

- 8** Place the brackets on the rubber trim (See Fig. 4 as reference to install brackets) and insert bolts (4) with washers (L) through the holes (Fig. 28). Do not forget to add some silicone sealant to the threads of each bolt before inserting in the holes. Repeat for all brackets. Fig. 30. **Loosely hand tighten - you'll need to tighten completely after attaching the rack.** Fig. 29.



Fig. 28

Fig. 29

- 9** With the help of a friend, place the rack on top of the brackets, and insert bolts (H) with washers (J) in each hole as shown in Figure 31. Below the bracket, add washers (J) and locknuts (I), and tighten with 1/2" ratchet and wrench (Figs. 32 & 33). For each bracket you will need 2 bolts (H), 4 washers (J), and 2 locknuts (I).



Fig. 30



Fig. 31



Figs. 32 & 33

Note: Remember to apply grease to the threads of the bolts before adding locknuts. Tighten completely or use a torque wrench to tighten bolts (Brackets to rack) to 50 inch-lbs. Finally, tighten roof bolts completely (Step 8) with a 10 mm wrench. Be careful not to over tighten!



ENJOY
— YOUR NEW —
BAJARACK
ROOF RACK!

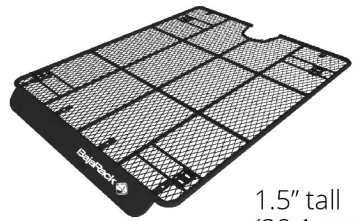


TECHNICAL SPECIFICATIONS

TACOMA

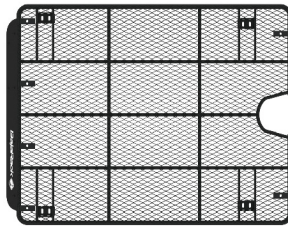
BR-TYTTCM-UT-FM-SFA-0

Utility (flat) Rack (mesh floor) (satellite antenna cutout)



1.5" tall
(38.1 mm)

48"(1219.2mm)



60" (1524 mm)

This Rack comes as one piece and includes all mounting brackets, stainless steel hardware, and aluminum wind deflector.

Material and Thickness: 1" (25.4mm) and 1/2"(12.7mm) Steel tubing

Wind Deflector: .062" (1.57mm) 5050-H32 Aluminum

Finish: Epoxy primer (rust inhibitor) with black powder coating

Rack weight: 60Lb (27.21Kg)

Weight Capacity: Dynamic (while driving) 200Lb (90.7 kg);

Static 400Lb (181.4 kg)

Measurements: 48"(1219.2mm) Wide x 60" (1524 mm) Long x 1.5" (38.1mm) tall

Cargo area: 19.99ft² (1.85m²)

Mounting method: Mounting Brackets(4 total)

COMPATIBLE ACCESSORIES



Fuel Can Holder



Axe & Shovel mount for flat racks



Awming mount for flat racks (2 pieces)



Tent Plates



Hi-Lift mount for flat racks



Light Clamp mount



Maxtrax mount for flat racks



Solar panel mount



Tire mount



Water Can Holder



Yakima & Thule Accessory mount (2 pieces)



Yakima & Thule Accessory mount (4 pieces)