

BAJARACK WARRANTY

This Limited Warranty covers BajaRack products and all accessories for a period of 2 years from the date of purchase to the original owner of the product and does not apply once the equipment is sold or transferred to another person.

This Warranty does not cover the cost of removal of reinstallation or the product. BajaRack warrants (subject to conditions listed in this warranty) all products to be free of manufacturing defects in materials and workmanship.

Warranty claim requirements

The claim has to be submitted during the warranty period at the place of purchase or directly at our corporate office located:



BajaRack Adventure Equipment
2275 Michael Faraday Drive, Suite 6
San Diego, CA 92154 USA
Phone Number: 760-621-0171

On your product you will find a label with a serial number. If you remove this label, please save the serial number in a safe place. You will need it if you want to make a warranty claim in the future. Any cost incurred to transport the defective product "to and from" will be the customer's responsibility.



Warranty resolution

Subject to BajaRack inspection of the product, the company will remedy defects in materials and/or workmanship by repairing or replacing, at BajaRack's option, the defective product without charge for parts or labor, subject to the limitations and exclusions described in this warranty. BajaRack may elect, at its option, not to repair or replace a defective product, in which case BajaRack will issue to the original retail purchaser, at BajaRack's option, either a full refund equal to the purchase price paid for the product, or a credit to be used toward the purchase of new BajaRack products or accessories.

Limitations of Liability

BajaRack is not liable for damage caused by shipping or transport of BajaRack products. It is the responsibility of the original retail purchaser to inspect all products prior to acceptance and to notify the shipping carrier in a timely manner so that any claim for damages can be made. If timely notification to the shipping carrier by the original retail purchaser is not made regarding damage caused during the transport of the product, a claim for damages may not be possible, and all liability falls to the original retail purchaser. This warranty does not apply if accident, abuse, misuse, collision, overloading, modification, misapplication, improper installation, or improper service has damaged the Product.

BAJARACK SHALL NOT BE LIABLE FOR ANY DIRECT, INDIRECT, CONSEQUENTIAL, INCIDENTAL, SPECIAL, EXEMPLARY, OR PUNITIVE DAMAGES OR FOR ANY OTHER DAMAGES OF ANY KIND OR NATURE [NO PERIOD.] (INCLUDING, BUT NOT LIMITED TO, LOST PROFITS, DOWN TIME OR LOSS OF USE) UNDER ANY LEGAL THEORY, EVEN IF BAJARACK WAS ADVISED OF THE POSSIBILITY OF SUCH DAMAGES. BAJARACK'S SOLE LIABILITY IS LIMITED TO THE REMEDY SET FORTH ABOVE.

BajaRack reserves the right to change Product design without notice.



TOYOTA 4RUNNER GEN3

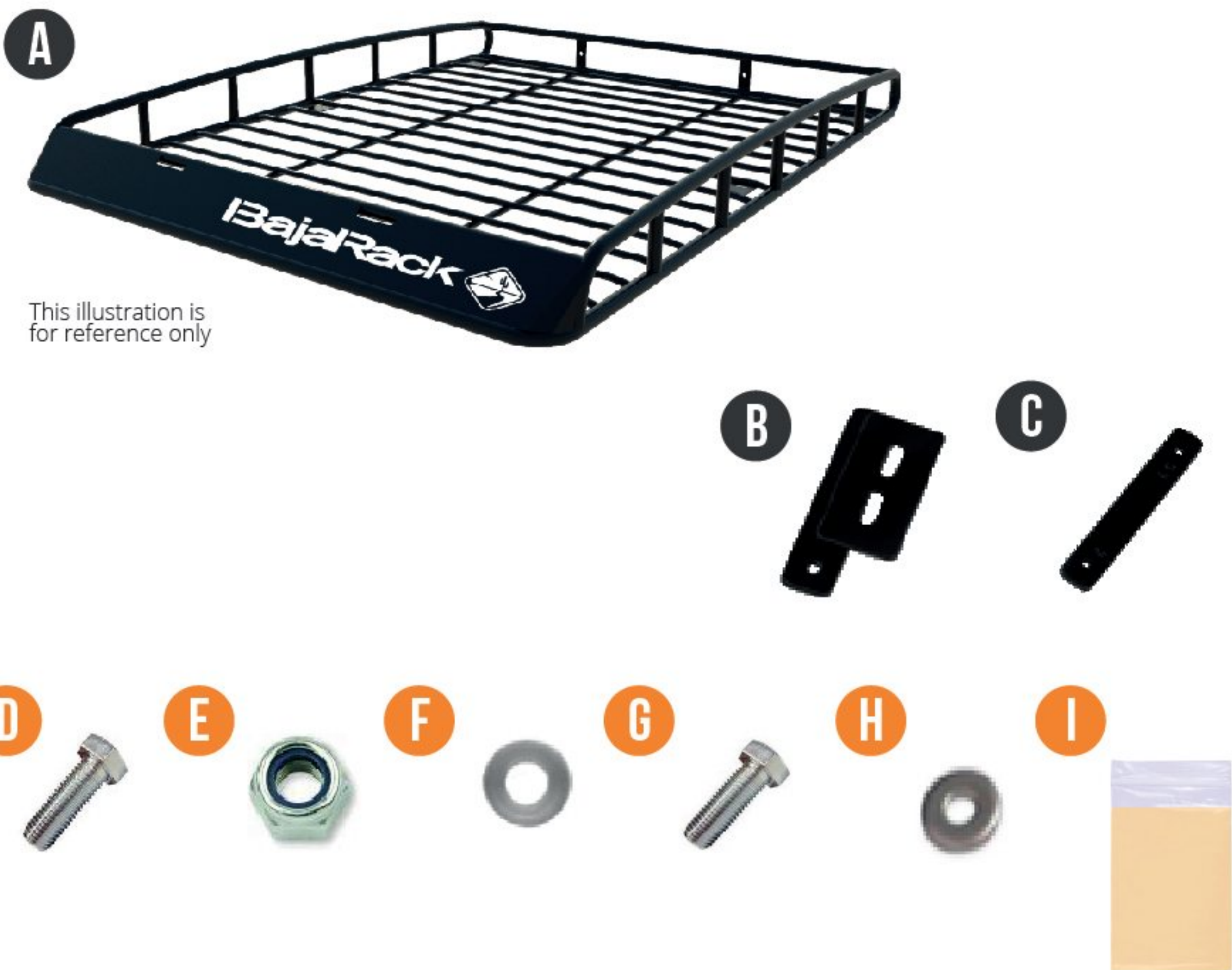
(1996-2002)

STD AND MG RACKS



TY4RG3 Series

RACK COMPONENTS



What's in the box

A) Rack	(1x)	
B) Brackets	(6x)	
C) Support Plates	(6x)	
D) 5/16" x 3/4" Hex Cap Screw Stainless Steel	(12x)	
E) 5/16" Nylon Insert Lock Nut Stainless Steel	(12x)	
F) 5/16" X0.75" OD Flat Washer Stainless Steel	(24x)	
G) 1/4"x 1/2" Roof Bolts	(12x)	
H) 1/4" Roof Washers	(24x)	
I) Grease, for use with all bolts with lock nuts	(1x)	

Recommended Tools

- 7/16" wrench for installation
- 1/2" ratchet tool for support
- 1/2" wrench for roof brackets installation
- RTV Silicone sealant

Tips and recommendations (please read)

- Please Install the Rack with the help of a friend.
- The load limit of your rack is 300lb please do not exceed.
- Your Rack is an accessory; it is not protection for rollovers

INSTALLATION STEPS

- 1 Remove factory roof rack from your vehicle. Start by removing the factory crossbars. Unscrew the side rails from the roof of your vehicle.

Slide down the front notch of the side rails and pull it off.



- 2 Mount of the support plates on the side rails. Slide-in the three support plates (C) into the factory side rails. Be sure to slide three (3) support plates (C) per side. All six are the same.



- 3 Slide back-on the front notches. Tighten back-on the factory rack screws.



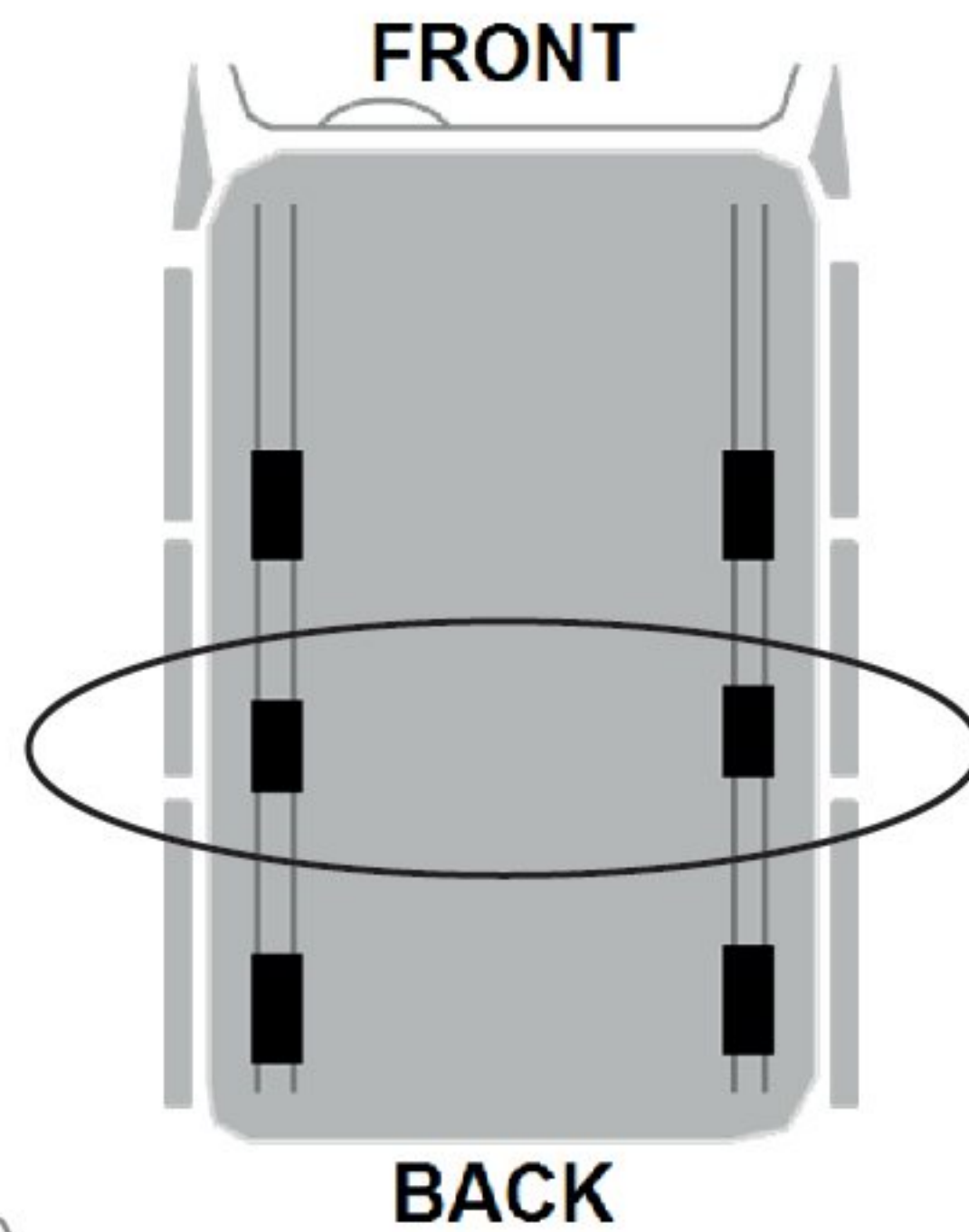
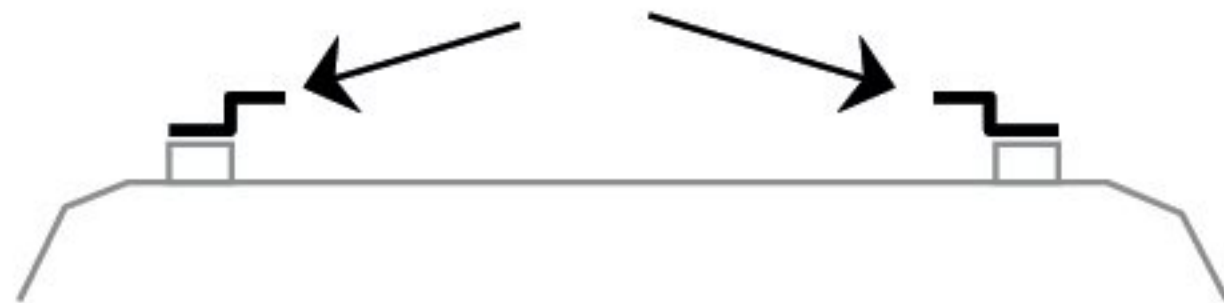
INSTALLATION STEPS

Note: Do not overtighten

Identify your brackets

The brackets in the middle are engraved identified with "MIDDLE"

The rest of the brackets are the same, you can switch them between sides as long as you place them towards the inner side of the roof.



- 5 Use grease or WD40 lubricant when twisting the screws on. Slide through the bolts (G) with washer (H) provided with brackets (B). Using a 7/16" wrench, tighten the bolts (G) on the threaded support plates inserted.

Note: Use grease (I) before tightening bolts



- 6 Repeat the same operation with the second bolt on the bracket. Bolts on the brackets should not be tighten for final adjustment.



INSTALLATION STEPS

- 7 With the help of a friend, mount your Bajarack on top of brackets.

Align slotted brackets on your vehicle with slotted plates of your Bajarack by sliding back and forward.



- 8 Slide through bolts and washers insert below washer (F) and nut (E).

Using a 1/2" ratchet wrench and a 1/2" wrench tighten the screws.



Note: Make sure the bolts and nuts have been fully tighten and flat washers have been inserted.



ENJOY
— YOUR NEW —
BAJARACK
ROOF RACK!

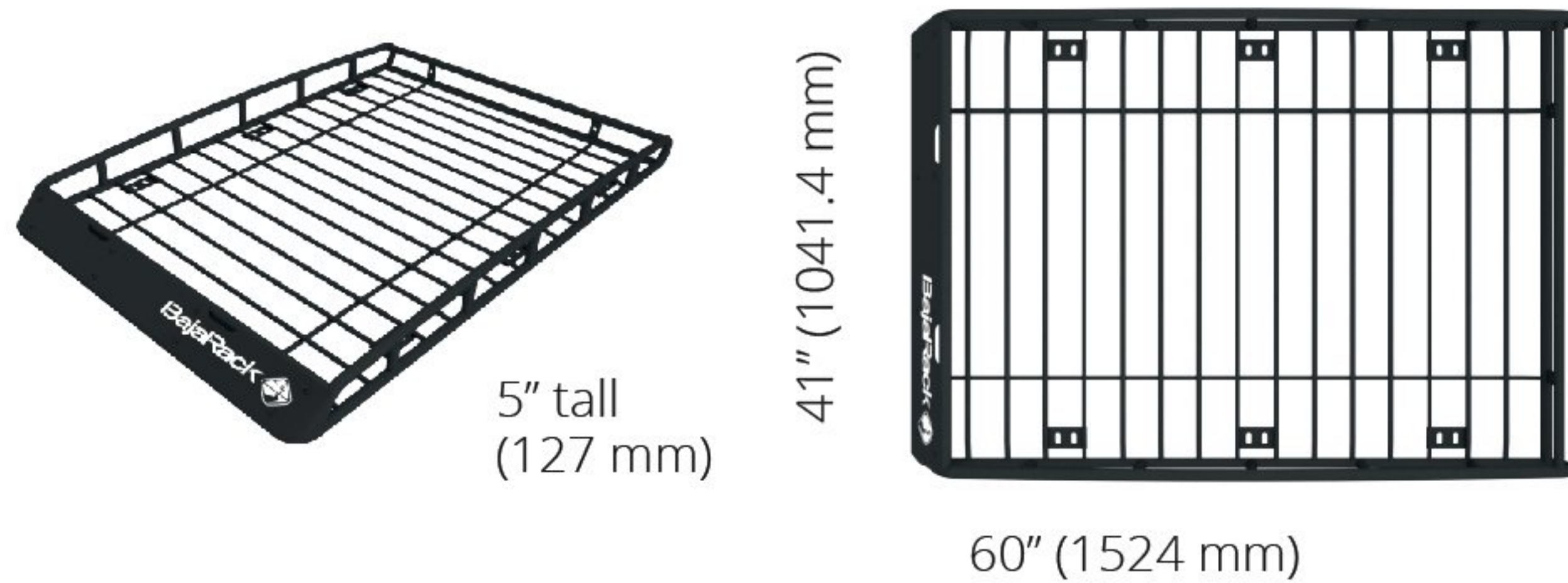


TECHNICAL SPECIFICATIONS

4RUNNER GEN3

BR-TY4RG3-LP-0

Standard Basket Rack



This Rack comes as one piece and includes all mounting brackets, stainless steel hardware, and aluminum wind deflector.

Material and Thickness: 1" (25.4mm) and 1/2" (12.7mm) Steel tubing

Wind Deflector: .062" (1.57mm) 5050-H32 Aluminum

Finish: Epoxy primer (rust inhibitor) with black powder coating

Rack weight: 60 Lb (27.21Kg)

Weight Capacity: 600 Lb (272 Kg) Static / 300 Lb (136 Kg) Dynamic

Measurements: 60" (1524 mm) Long x 41" (1041.4 mm) Wide x 5" (127 mm) tall

Cargo area: 14.35ft² (1.33m²)

Mounting method: 6 Support brackets and 6 rail brackets

COMPATIBLE ACCESSORIES



Fuel Can Holder



Axe & Shovel mount for 5" height racks



Awning mount for 5" height racks



Tent Plates



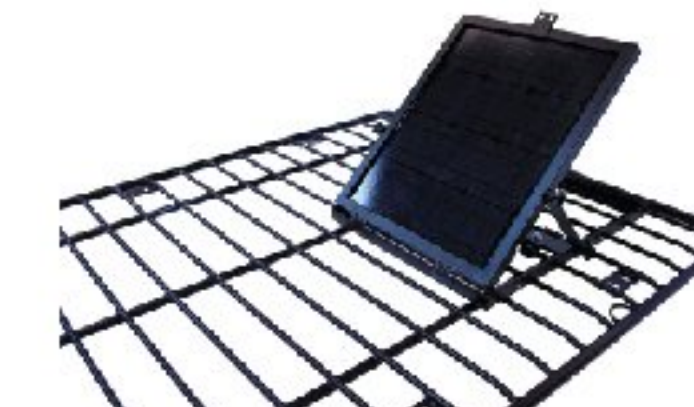
Hi-Lift mount for 5" height racks



Light Clamp mount



Maxtrax mount for 5" height racks



Solar panel mount



Tire mount



Water Can Holder



Yakima & Thule Accessory mount (2 pieces)



Yakima & Thule Accessory mount (4 pieces)



Light Bar LED Mount for Toyota 4Runner G3



Light Bar for Toyota 4runner G3 (7" Lights)



Light Bar for Toyota 4runner G3 (10" Lights)