

BAJARACK WARRANTY



This Limited Warranty covers BajaRack products and all accessories for a period of 2 years from the date of purchase to the original owner of the product and does not apply once the equipment is sold or transferred to another person.

This Warranty does not cover the cost of removal of reinstallation or the product. BajaRack warrants (subject to conditions listed in this warranty) all products to be free of manufacturing defects in materials and workmanship.

Warranty claim requirements

The claim has to be submitted during the warranty period at the place of purchase or directly at our corporate office located:



BajaRack Adventure Equipment
2275 Michael Faraday Drive, Suite 6
San Diego, CA 92154 USA
Phone Number: 760-621-0171

On your product you will find a label with a serial number. If you remove this label, please save the serial number in a safe place. You will need it if you want to make a warranty claim in the future. Any cost incurred to transport the defective product "to and from" will be the customer's responsibility.



Warranty resolution

Subject to BajaRack inspection of the product, the company will remedy defects in materials and/or workmanship by repairing or replacing, at BajaRack's option, the defective product without charge for parts or labor, subject to the limitations and exclusions described in this warranty. BajaRack may elect, at its option, not to repair or replace a defective product, in which case BajaRack will issue to the original retail purchaser, at BajaRack's option, either a full refund equal to the purchase price paid for the product, or a credit to be used toward the purchase of new BajaRack products or accessories.

Limitations of Liability

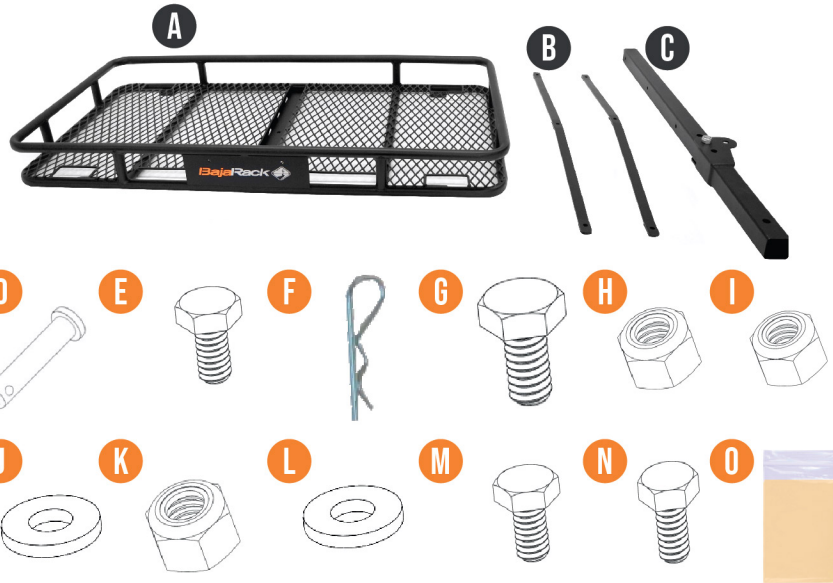
BajaRack is not liable for damage caused by shipping or transport of BajaRack products. It is the responsibility of the original retail purchaser to inspect all products prior to acceptance and to notify the shipping carrier in a timely manner so that any claim for damages can be made. If timely notification to the shipping carrier by the original retail purchaser is not made regarding damage caused during the transport of the product, a claim for damages may not be possible, and all liability falls to the original retail purchaser. This warranty does not apply if accident, abuse, misuse, collision, overloading, modification, misapplication, improper installation, or improper service has damaged the Product.

BAJARACK SHALL NOT BE LIABLE FOR ANY DIRECT, INDIRECT, CONSEQUENTIAL, INCIDENTAL, SPECIAL, EXEMPLARY, OR PUNITIVE DAMAGES OR FOR ANY OTHER DAMAGES OF ANY KIND OR NATURE [NO PERIOD.] (INCLUDING, BUT NOT LIMITED TO, LOST PROFITS, DOWN TIME OR LOSS OF USE) UNDER ANY LEGAL THEORY, EVEN IF BAJARACK WAS ADVISED OF THE POSSIBILITY OF SUCH DAMAGES. BAJARACK'S SOLE LIABILITY IS LIMITED TO THE REMEDY SET FORTH ABOVE.

BajaRack reserves the right to change Product design without notice.



RACK COMPONENTS



What's in the box

- A) Hitch Rack (1x)
- B) Suspenders (2x)
- C) Main arm pre-assemble (1x)

- D) Release Pin (1x)
- E) 5/8" x 3 1/2" Hex Cab Screw (1x)
- F) Loking Pin (2x)
- G) 5/8" x 4" Hex Cab Screw (1x)
- H) 5/8-11" Locknut Nylon (1x)
- I) 5/8-11" Nut (1x)
- J) Pressure Washer (1x)
- K) 3/8" -16 Grade 18-8 NE Stainless Steel Nylon Insert Lock Nut (7x)
- L) 3/8" 18-8 Stainless Steel Small OD Flat Washer (14x)
- M) 3/8" 16 x 3" Grade 18-8 Stainless Steel Hex Cap Screw (3x)
- N) 3/8" 16 x 1" Grade 18-8 Stainless Steel Hex Cap Screw (4x)
- O) Grease, for use with all bolts with lock nuts (1x)

⚠️ Tips and recommendations (please read)

- Please Install your rack with the help of a friend.
- Your Rack is an accessory; it is not protection for rollovers

🔧 Recommended Tools

- 9/16" wrench
- 9/16" socket
- Ratchet tool
- 15/16" wrench

INSTALLATION STEPS

1 Take out the content of the box and place it on a flat surface, place the hitch rack (A) upside down and place the main arm (C) Centered on top, next place the two suspenders (B) one on each side.



2 Proceed to place the hex cab screw (M) and washer (L) from the bottom to the top joining the center of the hole of the suspender with the hitch rack. Insert a washer (L) and locknut (K) on top, repeat this process for the three hex cap screws. Insert hex cab screw (N) and washer (L) from the bottom to the top joining the side hole of the suspender with hitch rack. Insert a washer (L) and locknut (K) on top, repeat this process for the four hex cap screws. NOTE: apply grease (O) to the thread of the hex cap screw. Proceed to tighten all hex cap screws and locknuts.

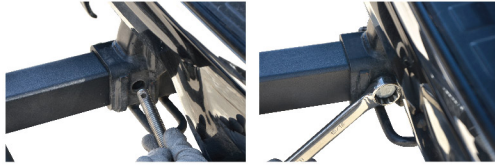


3 Place the hitch rack upwards with the main arm bent facing up, insert release pin (D) throughout the hole and secure it on the other side with locking pin (F).



INSTALLATION STEPS

- 4 With help from a friend place the main arm of the hitch rack inside the hitch of the vehicle, insert through the hole the hex cap screw (E) and the other side. Pressure washer (I) Nut (I) and locking pin (F). proceed to tighten, this will prevent the hitch rack from rattling



Note: apply grease (O) to the thread of the hex cap screw.



- 5 Remove the locking pin (F) from the release pin (D) on the main arm and proceed to unfold the hitch rack. Insert the release pin (D) through the hole and secure it with locking pin (F) on the other side, this will hold the hitch rack in place.



INSTALLATION STEPS



ENJOY
— YOUR NEW —
BAJARACK
HITCH RACK!



TECHNICAL SPECIFICATIONS

HITCH RACK

BR-HITCH-24-0



This Rack comes as one piece and includes all mounting brackets, stainless steel hardware, and aluminum wind deflector.

Material and Thickness: 1" (25.4mm) and 1/2"(12.7mm) Steel tubing

Finish: Epoxy primer (rust inhibitor) with black powder coating

Rack weight: 58.25 Lb (13.60Kg)

Shipping weight: 69.60 Lb (13.60Kg)

Weight Capacity: 500 Lb (226.79 Kg)

Measurements: 26"(660.4mm) Width, x 50" (1270 mm) Long x 5" (127 mm) tall

Cargo area: 8ft² (0.74m²)

Mounting method: Main arm (hitch)

COMPATIBLE ACCESSORIES



Fuel Can Holder



Axe and Shovel for 5" height Racks



Hi-Lift mount for 5" height Racks



Light Clamp mount



Water Can Holder