



# PARTS BREAKDOWN PRESSURE WASHER

MODEL: B4015REA

---



---

**BEPOWEREQUIPMENT**

**.COM**



# PARTS BREAKDOWN PRESSURE WASHER

MODEL: B4015REA

## COMPONENTS



REF #	DESCRIPTION	QTY	BE PART #
1	SPRAY NOZZLE SET	1	85.210.035
2	HIGH PRESSURE HOSE, 50' X 1/4"	1	85.238.153
3	SPRAY GUN WAND ASSEMBLY	1	85.205.026
4	SOAP TUBE	1	85.400.005
5	FRAME ASSEMBLY	1	85.600.125G
6	COMPLETE PUMP ASSEMBLY	1	85.129.037B
7	WHEELS (EACH)	2	85.660.054BF
8	LITHIUM-ION BATTERY	1	85.573.108
9	BATTERY BOX (WITH HARDWARE)	1	85.603.005

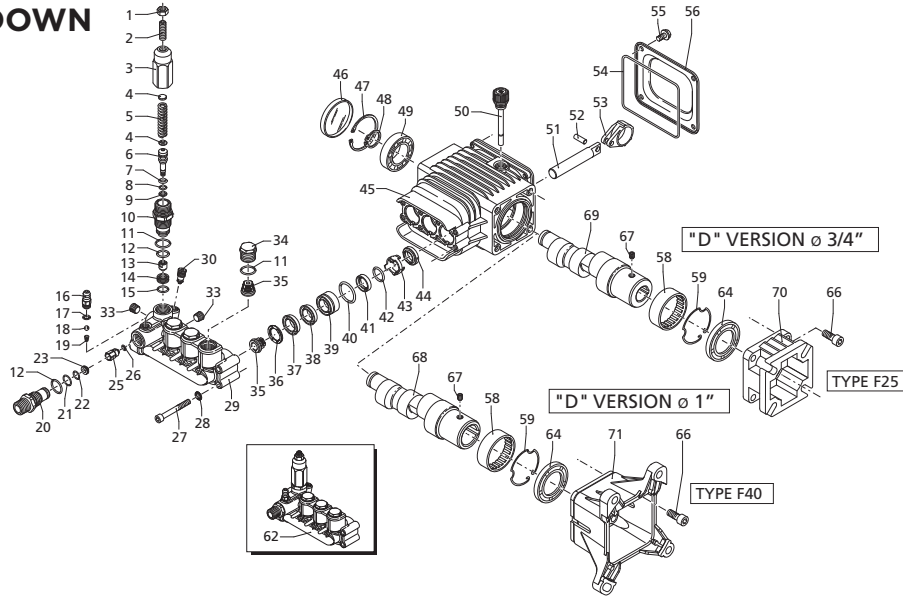
**\*CHECK POWEREASE R420-1A FOR ENGINE BREAKDOWN AND PARTS**



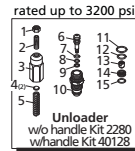
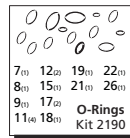
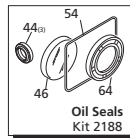
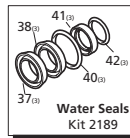
# PARTS BREAKDOWN PRESSURE WASHER

MODEL: B4015REA

## PUMP BREAKDOWN



### Repair Kits



Pos	Code	Description	Qty.	Pos	Code	Description	Qty.	Pos	Code	Description	Qty.
1	1980300	Nut M6	1	40	770260	O-Ring ø23.52x1.78	3	OIL CAPACITY - 16 OZ			
2	2760420	Grub screw M6x12	1	41	1260440	Gasket	3				
3	1980540	Unloader knob	1	42	640070	O-Ring ø13.95x2.62	3	<b>Legend</b> ø 15 For ▽ RSV2.5G25    ø 15 For □ RSV3G25    ø 15 For ▲ RSV3.5G35    ø 15 For □ RSV4G30			
4	1980220	Spring plate	2	43	2760310	Spacer	3				
5	2760410	Spring	1	44	1260460	Oil seal	3	For ○ RSV3G30    For ■ RSV4G35 For ● RSV3G35			
6	2760400	Valve piston	1	45	2760010	Pump body	1				
7	2260100	O-Ring ø6.02x2.62	1	46	1266740	Bearing cap	1	<b>Special Note:</b> <b>Kit #42369</b> Complete unloader w/seat for pumps over 3200 PSI			
8	660190	O-Ring ø6.07x1.78	1	47	1260790	Circlip øi52	1				
9	2760210	Ring	1	48	1780550	Snap ring	1				
10	2760050	Piston guide	1	49	2760340	Bearing	1				
11	1200690	O-Ring ø15.6x1.78	4	50	1780490	Bearing	1				
12	394280	O-Ring ø12.42x1.78	2	51	880130	Oil cap	1				
13	2260070	By-pass jet	1	52	2760040	Piston	3				
14	2760090	Seat	1	53	1780050	Piston pin	3				
15	770140	O-Ring ø11.11x1.78	1	54	1780040	Con rod Aluminum	3				
16	1982520	Hose nipple	1	55	1780710	Con rod Bronze	3				
18	1250280	Ball	1	56	2760280	O-Ring ø101.27x2.62	1				
19	1560520	Spring	1	57	802190	Bolt M6x12	4				
20	2760230	Detergent injector 3/8" G	1	58	2760110	Rear cover	1				
21	2760270	O-Ring ø12x1	1	59	2760350	Bearing	1				
22	1470210	O-Ring ø9x1	1	60	1321190	Bearing	1				
23	2760120	Injector insert	1	61	1321080	Snap ring	1				
25	2760130	Jet	1	62	2769201	Complete pump head w/o EZ start	1				
26	1460430	O-Ring ø4x2.5	1	62	2769209	Complete pump head EZ-start	1				
27	801080	Bolt M6x50	8	64	480671	Oil seal	1				
28	1381550	Lockwasher	8	66	180030	Bolt M8x20	4				
29	2760020	Head - w/o EZ-start	1	67	820440	Set screw M6	1				
30	2761050	Head - Bare EZ-start	1	68	1780340	Hollow shaft ø1"	1				
31	2760330	Head - Bare w/o EZ-start	1	69	1780920	Hollow shaft ø1"	1				
32	2760630	EZ-start plug	1	70	1780330	Hollow shaft ø1"	1				
33	2760260	Plug 1/4" G	2	71	1780590	Hollow shaft ø3/4" 3GPM #9	1				
34	2760180	Plug	3		1780600	Hollow shaft ø3/4" 2.5GPM #10	1				
35	2769050	Complete valve	6		1780580	Flange F25	1				
36	2760220	Support ring	3		2760290	Flange F40	1				
37	1342761	Gasket	3		AR64516	Oil	1				
38	1981580	Ring	1								
39	1981570	Piston guide	3								



# **BE**

**POWER EQUIPMENT**

---

**If you need technical assistance call:**

**1-866-850-6662**

**(8:00am - 4:30pm PST, Mon - Fri)**