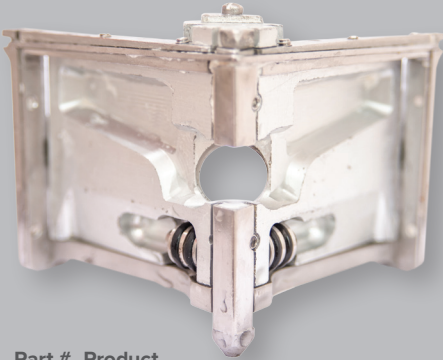


LEVEL5™



Part # Product

4-701 7" Corner Applicator
4-702 8" Corner Applicator



Part # Product

4-732 2.5" Corner Finisher
4-733 3" Corner Finisher
4-734 3.5" Corner Finisher



CORNER FINISHER AND APPLICATOR

Corner Finisher

The corner finisher is used after the corner roller to glaze the excess joint compound from the inside angle. It is also used in conjunction with the corner applicator to apply the finish coat to the same angle. The spring-loaded frames distribute excess joint compound evenly on both sides of the 90° angle, simultaneously. Available in the following sizes: 2 ½", 3", and 3 ½".

Corner Applicator

The corner applicator is used with a corner finisher to apply the finish coat of joint compound to internal angles. The corner applicator is filled with joint compound through the filler valve. A corner finisher is attached to the metal cone tip. By applying pressure to the back plate the joint compound will flow through the angle head and apply the correct amount of joint compound to both sides of the corner simultaneously.

Product Care and Cleaning

Keeping any tool clean and in good working order is imperative to achieving the highest quality finish with every job. Here are some tips to keeping your Level 5 corner finisher and applicator in great condition:

- Joint compound should never be allowed to dry on the tools.
- Tools should be immersed in a bucket of clean water when not in use for short periods of time during the day.
- Tools should be cleaned completely at the end of each day.
- Once the tool has been completely cleaned and rinsed, coat all parts with a lubricant. We recommend a light machine oil like 3-IN-ONE Multi-Purpose Oil for lubrication and maintenance. **DO NOT USE SILICONE OR OTHER SPRAY LUBRICANTS SUCH AS WD-40®.** These materials can have an adverse effect on rubber parts.

**Welcome
to the
RED ZONE**

Visit Level5Tools.com to learn more and to shop our full line of automatic drywall taping and finishing tools designed to help you get the job done economically and efficiently.



OPERATION

Drywall Preparation

All drywall should be securely mounted and any protruding screws or nails set and dimpled prior to finishing. Gaps larger than 1/8" should be filled using a quick-set compound and made level with the face of the drywall board. Repair any damaged areas of the board prior to using the corner finisher and corner applicator.

Loading the Corner Applicator

Load the corner applicator using the pump and filler nozzle attachment without the spout inserted. Firmly press the fill nozzle, located at the base of the box, into the filler nozzle and pump joint compound into the box until the back plate of the box is pushed back against the stop tabs.

Glazing the Angle Joint

After using the corner roller to bed the tape into the corner, use the corner finisher on a handle to wipe off (glaze) excess compound from the angle. Apply light pressure while moving the angle head along the joint. Typically a 2 1/2" or 3" corner finisher is used for this operation. Where three internal angles meet in a corner, clean up the excess compound with a joint knife.

Finishing the Angle Joints

Apply a final coat of joint compound over the internal angles with the 3" or 3 1/2" corner finisher attached to a 7" or 8" corner applicator after the previous coat has dried. Check the dried corner and remove any imperfections. With the loaded corner applicator box and attached corner finisher, start at one end of the joint and run down the length of the joint, stopping about 3 feet from the end. Place the corner finisher into the corner and feather back towards the finished angle swiping away to insure a clean coat on both sides of the angle.

Welcome
to the
RED ZONE

Visit Level5Tools.com to learn more and to shop our full line of automatic drywall taping and finishing tools designed to help you get the job done economically and efficiently.