

# UDS038

Triple Display Docking Station for Windows



TOBENONE

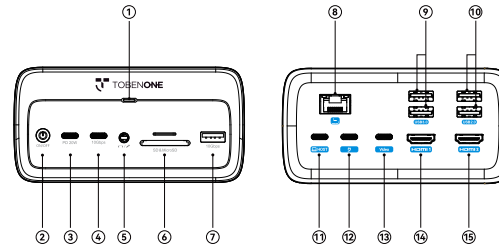
## THANK YOU!

Thank you for purchasing TobenONE USB C Docking Station UDS038! Our dock provides the ability to connect up to triple displays, power adapter, Gigabit Ethernet, audio devices, 7 USB peripherals, and SD/TF card to your laptop via one single USB C cable.

Simplicity Power Elegance

1

## Ports And Connectors



- ① Green Power LED
- ② Power Button: Control dock power on/off
- ③ USB C 3.1: PD 20W output
- ④ USB C 3.2: Speed up to 10Gbps
- ⑤ 3.5mm Audio: For Headphone & Microphone
- ⑥ SD/microSD Slot: Support SD&TF work simultaneously
- ⑦ USB A 3.2: Speed up to 10Gbps
- ⑧ LAN Port: Speed up to 1000Mbps
- ⑨ USB A 3.0\*2: Speed up to 5Gbps
- ⑩ USB A 2.0\*2: Special for wireless devices
- ⑪ HOST Port: Connect to the laptop
- ⑫ USB C PD 3.0: Connect the power adapter included, support 87W output
- ⑬ USB C Display Port: Resolution up to 8K/30Hz
- ⑭ HDMI 1: Resolution up to 8K/30Hz
- ⑮ HDMI 2: Resolution up to 8K/30Hz

## Plug-and-Play, NO driver needed

This USB C hub is designed for Windows laptops with a full-featured Type C or Thunderbolt 3/4 port. So please confirm your Windows laptop's USB Type-C port supports Display Alt-Mode before you purchase this USB-C hub. Otherwise, the video ports cannot work.

If you're not sure, feel free to contact us with your exact laptop model, and we will check for you!

**⚠ Note: This docking station is designed for Windows laptop, not for macOS!!!**

3

## Connection method

**Step 1:** Connect the included power supply to the dock's USB C PD 3.0 port (⑫)

**Step 2:** Use the included USB C cable to connect the dock and laptop via HOST port (⑪)

**Step 3:** Connect the multi monitors via HDMI 1 (⑭), HDMI 2 (⑮), USB C Display port (⑬)

**Step 5:** Attach USB and USB-C devices(USB driver, keyboard, mouse, printer, etc.) to the USB ports(③, ④, ⑦, ⑨). It is recommended to connect wireless mouse and keyboard to connect the USB 2.0 port (⑩).

**Step 6:** Connect the speaker, headphones, or microphone to the audio port(⑤). And connect the ethernet cable to the RJ45 ethernet port(⑧)

4

## Charging Matters

**1>** If the laptop's USB C port doesn't support charging, you need to connect the original power supply to the laptop's charging port!

**2>** If your PC is Dell/HP/ThinkPad laptop, your PC may be warned of low charging. Those Laptop (Dell/HP/ThinkPad...) do not allow 3rd party charger to charge their laptop in other ways. So if you use a lower-power charger than the laptop's included AC adapter, it will cause a low charging warning. It's the limit of the laptop, not for the dock.

5

USB C DP Alt Mode (DP1.4/MST, DSC)				
Item	Mirror/Extend	HDMI 1	HDMI 2	USB-C(DP)
1		8K@30Hz / 4K@120Hz		
2	Single monitor		8K@30Hz / 4K@120Hz	
3				8K@30Hz / 4K@120Hz
4		4K/60Hz	4K/60Hz	
5	Dual monitor	4K/60Hz		4K/60Hz
6			4K/60Hz	4K/60Hz
7	Triple monitor	4K/60Hz	4K/60Hz	4K/30Hz

USB C DP Alt Mode (DP1.2/MST)				
Item	Mirror/Extend	HDMI 1	HDMI 2	USB-C(DP)
1		4K/30Hz		
2	Single monitor		4K/30Hz	
3				4K/30Hz
4		1920X1080/60Hz	1920X1080/60Hz	
5	Dual monitor	1920X1080/60Hz		1920X1080/60Hz
6			1920X1080/60Hz	1920X1080/60Hz

### Reminder:

**1:** The final resolution of video output depends on your host devices(laptop, cable, and monitor). Such as: Only when your host devices support 4K@60Hz resolution, the video output will be 4K@60Hz.

**2:** If your laptop only supports DP1.2, you only canmirror/extend dual monitor. If you connect 3 monitors, one of them will not work!

6



Any Questions, We Are Here To Help!  
**Email: support@tobenone.com**  
 The Only Question We can't Fix Is The One We Don't Know