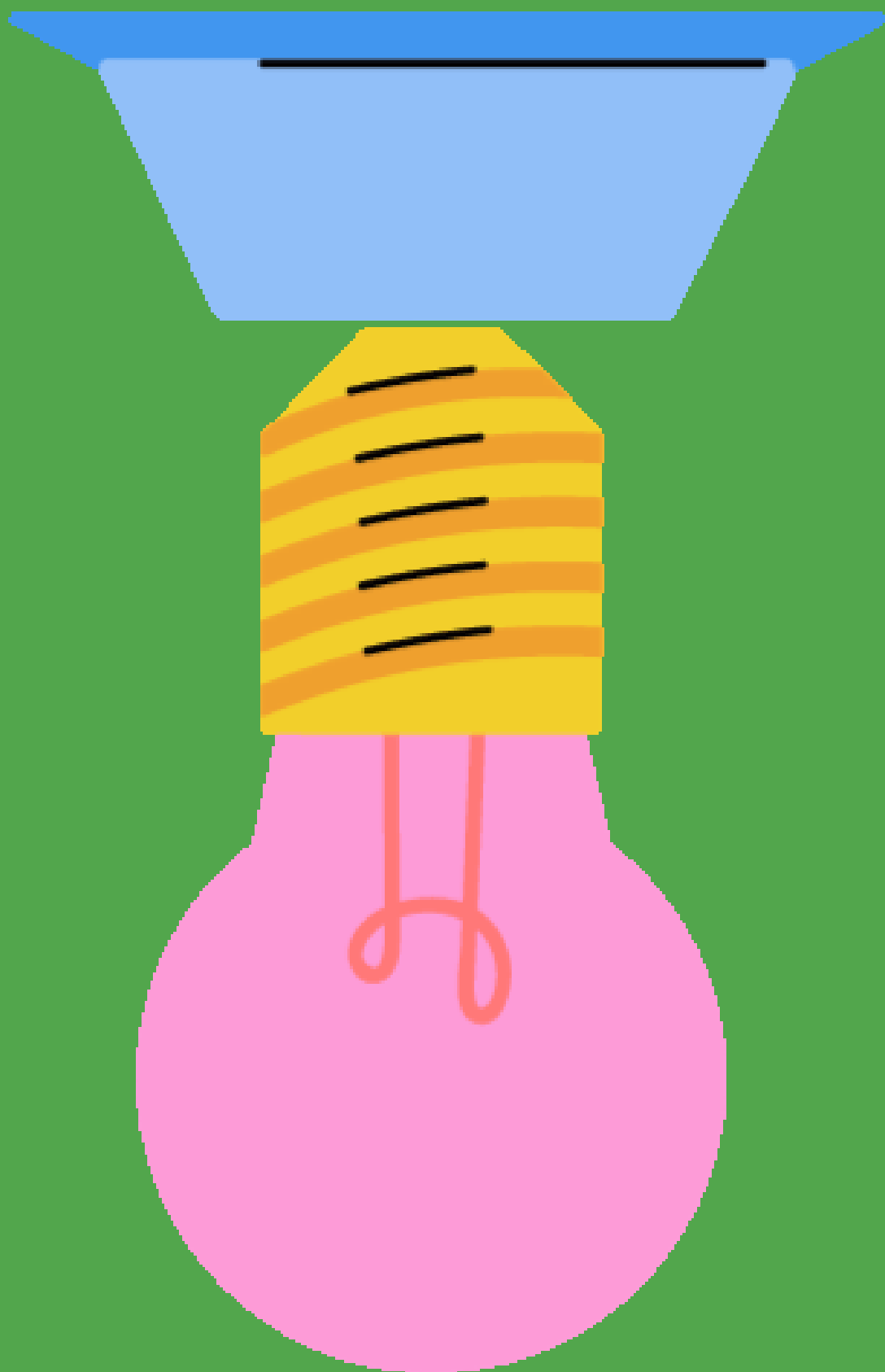


# Lighting Guide

By HortiPower



# Tissue culture lighting

Normally tissue culture labs have an intensity between 0-50  $\mu\text{mol}/\text{m}^2/\text{s}$  and the distance between the fixture and shelf is about 30-40cm.

The exact intensity that you need depends on the variety, growth stage and the transmission of the bottle/ bag. Please note you are able to dim down, so more light can always be dimmed down and it will help with a more uniform lighting design. Need more specific help? Please contact us.

Max. PFD

on tissue  
bottle      Distance  
                 (cm)      Number of  
   fixtures

109	10	1
54	20	1
38	30	1
29	40	1
23	50	1
218	10	2
108	20	2
76	30	2
58	40	2
46	50	2

# 6 Channel DMX RDM LED driver

One driver can control multiple fixtures that are daisy chained.

- 1 Driver: Control up to 10 Tissue culture fixtures
- 1 Driver: Control up to 5 City farming fixtures

# HortiPower City Farming Linear 20W

Max 15 pcs can be daisy chained. Multiple fixtures of this type can be installed to boost the  $\mu\text{mol}$  output. Bringing the light closer to the plant is also an effective tactic to get higher  $\mu\text{mol}$  level on the plant.

Number of fixtures per grid	Total PAR emitted	PFD on surface @ 30cm	PFD on surface @ 50cm
1	31	49	29
2	62	95	51
3	93	132	76
4	124	160	97
5	155	197	118
6	186	212	136
7	217	234	154
8	248	259	164
9	279	277	177
10	310	282	188
11	341	296	205
12	372	298	214
13	403	305	225
14	434	314	234
15	465	326	244

# Micromole output ( $\mu\text{mol}/\text{m}^2/\text{s}$ )--- 4' x 4' Light grid (15 pcs x 20 Watt) 1' FROM CANOPY

177	213	245	237	220	166
228	274	308	306	286	224
242	315	327	327	317	251
243	301	342	341	316	264
229	279	303	303	281	235
171	221	244	235	225	185

# Micromole output ( $\mu\text{mol}/\text{m}^2/\text{s}$ )---

## 4' x 4' Light grid (15pcs x 20Watt) at 2' FROM CANOPY

125	153	165	165	151	124
155	181	194	192	182	156
167	202	208	207	201	167
160	196	202	206	192	166
154	175	187	185	178	143
127	147	154	158	146	118



# Micromole output ( $\mu\text{mol}/\text{m}^2/\text{s}$ )--- 4' x 4' Light grid (15pcs x 20 Watt) at 3' FROM CANOPY

97	108	115	110	107	99
103	120	127	126	119	113
113	129	135	133	130	123
116	134	140	133	131	120
111	125	127	124	117	110
94	108	112	107	102	93

# Contact Us

## Europe

Posthoornstraat 17, 3011 WD,  
Rotterdam, Netherlands  
+31 10 261 3311

## Asia

17F, International Industrial Centre,  
2-8 Kwei Tei Street, Fotan, N.T. Hong  
Kong  
+852 3974 6318  
[info@hortipower.com](mailto:info@hortipower.com)