



LILLI & TERASSI SWINGS

Contents and general advice

You will need:

- 10mm and 14mm socket with ratchet spanner
(14mm may vary dependent on the thickness of galvanising so 13mm socket is useful to have at hand if possible).
- Rubber mallet
(please do not use an ordinary hammer as this may damage the wood or affect the galvanised finish on the bolt heads. If you do not have a rubber mallet then use a hammer against a small piece of wood as a buffer to protect the bolts).
- Bradawl

It is useful to refer to the photographs in the brochure when assembling your furniture.

In the unlikely event that you find during assembly that a bolt does not pass through the timber please check for any obstruction. If you find one of the short nails has passed through the hole then this can be cleared using a metal drill bit to drill through the nail.

You may wish to wear light gloves to protect from any wood splinters.

Fixing contents of seat bag

- 2 x Long U bolts
- 2 x Short U bolts
- 4 x Plastic Spacers
- 2 x 75mm Bolts
- 16 x Nuts
- 16 x Washers
- 4 x Large Penny Washers
- 4 x Quicklink fittings
- 2 x Chains with 'D' shackle attached

Fixing contents of frame bag

- 8 x M8 x 140mm bolts
- 8 x M8 x 135mm bolts
- 16 x M8 Nuts
- 16 x Washers
- 2 x M8 x 90mm bolts
- 2 x Circular Hanging Eyes

NB. Arms for seats are tucked into the back of the seat for transportation.

Swing Seat Assembly



Picture 1

1. Layout all the parts so they can be easily identified. You'll find the galvanised fixings in a bag stapled to the underside of the swing seat.



Picture 2

2. Fix the back of the arm onto the seat using a 75mm coach bolt as shown in diagram 1 and pic. 2. Secure with washer and nut on the inside.



Picture 3

3. Secure the long 'U' bolt through the seat base as per the diagram 1. Secure with washer and nut on the inside.



Picture 4

4. Secure the short 'U' bolt using nuts and washers on the upper part seat frame (as per diagram 1).

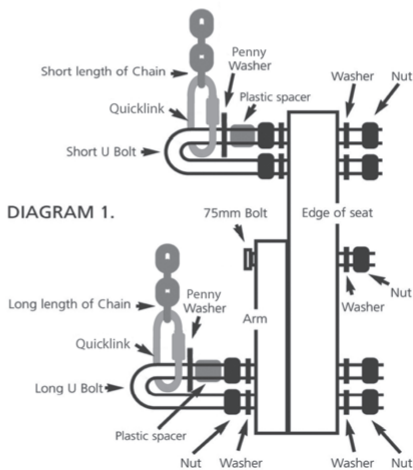


DIAGRAM 1.

5. Please note that each chain length is split in two unequal parts either side of the hanging 'D' shackle. The longer side should be attached to the seat (long 'u' bolt) fixing and the shorter length to the back of the seat (short 'u' bolt) using the quicklink fitting as shown in pic 4.

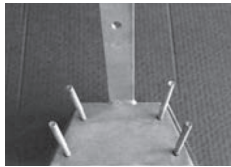
(The height and tilt angle of the seat can be altered by either shortening the chain length at the rear 'U' bolt or altering the location of the 'D' shackle along the chain).

Swing Frame Assembly

6. The swing frame includes 4 legs that have specially cut top slopes and make 2 distinct pairs. Each pair comprises of a leg marked '1' and another marked '2'. Select the pair of legs (ie. 1 & 2) with the pre-cut angle to the top of the legs facing each other. Join each pair of legs together with the small top cross member or canopy top cross member if canopy frame and canopy has been purchased. Insert the metal bracket between the cross member and the legs. To join all components together use the 8 x 145mm bolt (shorter bolt will not protrude from the legs when inserted).



Picture 6



Picture 7

7. Now attach the lower cross members using the 8 x 135mm bolts (pic. 7).

8. Put washers and nuts on all the bolts but at this stage to be loosely tightened.

9. When both frame ends have been assembled knock the top beam into the top of the 'A' Frames.



Picture 8



13. Attach the side tables to the lower cross members with the 50mm screws provided. Do not fit the screws too quickly as they may overheat and shear. Ensure the tables are horizontal to the ground level whilst fixing and that the cut out notch underneath is slotted onto the cross members properly. If it appears incorrect turn the shelf around and re-fit so it is level.



Picture 9

Canopy Frame Option

14. The canopy frame comes in a separate package from the seat or the canopy material itself. The package contains 2 extended top cross members and poles from which the canopy is suspended. When assembling the wing leg frame fit the two extended cross members instead of the the short cross members. The extended cross member slopes up at the front in order to increase head clearance, (see diagram 3). Slip the two poles through the canopy material front and back and fit over the corner of the extended cross member. This can be screwed to fix if desired in windy locations with the screws provided or left unscrewed so that the canopy can be pushed back if required.

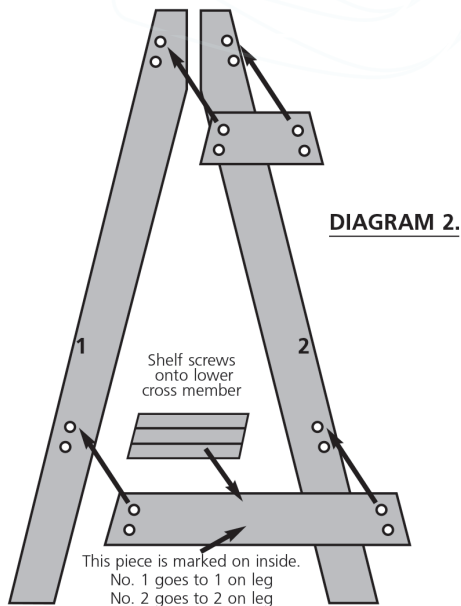
Highback Option

15. The High Back seat option fits on the top slat of the the seat part and is fixed with shallow 'v' shaped galvanised metal straps, which fit on with the 'v' pointing towards the front of the seat (pic. 9).

First fit the straps to the spines of the seat, attach with the screws provided. Do not fit screws too quickly as they may overheat and shear. Then place the High Back option on the top slat of the seat making sure that the edge of the seat lines up with the edge of the High Back part and fix the top half of the straps to the spines on the High Back option using the remaining screws provided.

Swing Footrest Option

16. This piece fits between the second and third slats from the bottom of the seat. Please note that it is not designed to sit on or take more weight than the legs of an adult.



For canopy, fit onto one pair of legs numbered 1 & 2 the extended cross members this way round, with the arrows and letters 'L & R' on the inside. And onto the other pair of legs numbered 1 and 2 fit the extended cross members the other way around, again with the arrows and the letters 'L and R' on the inside. The arrow marks the point to the front of the swing when assembled and with a L or R which denotes the left or right pair of legs when looking at the assembled swing from the front.



FRONT



DIAGRAM 3.

DON'T FORGET TO PAINT ON THE FURNITURE PROTECTOR AS SOON AS THE PRODUCT IS ASSEMBLED, UNLESS ANOTHER FINISH IS TO BE APPLIED.