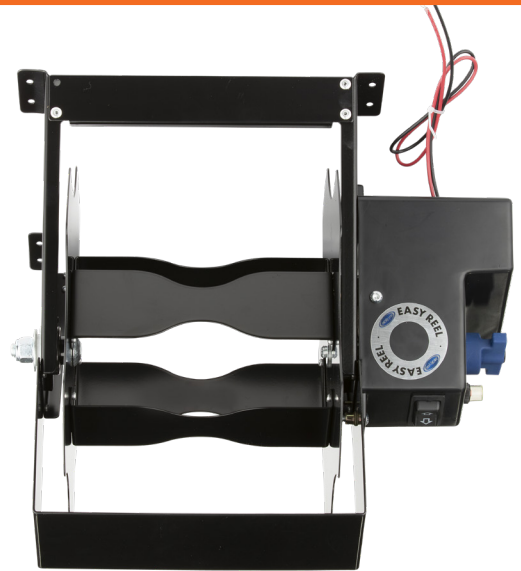
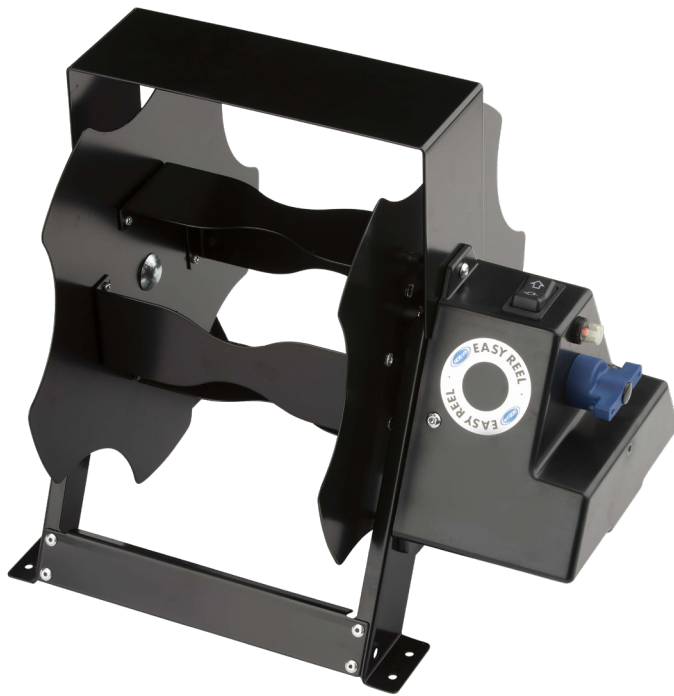


EASY REEL™ MOTORIZED SPOOLER

OWNER'S MANUAL

Even mounts upside down



| REEL56-014H

INTENDED USE & FEATURES

- Smooth, easy reel operation means no more strain
- Allows for efficient cord storage
- Helps maximize your storage space
- Installs easily with 8 screws



Above. Beyond. Always.

574.293.1581 • MORryde.com

INSTALLATION INSTRUCTIONS

Step 1

Install your Easy Reel™ Motorized Spooler in the desired location by screwing into the 8 mounting holes located on the base of the spooler. The Easy Reel™ Motorized Spooler is meant to be reversible so it can be installed with the motor on either side based on personal preference.

NOTE: It is up to the installer to verify the safety of any installation methods and hardware used.

⚠ WARNING: If mounted anywhere but on the floor, the surface must be capable of supporting five times the weight of the reel and cord. The structure of your RV may require additional reinforcement. MORryde is responsible for the design and manufacturing of our parts; we are not responsible for the structure it is mounted to. Improper installation may cause property damage or personal injury. MORryde cannot be liable for property damage or injury caused by incorrect mounting or incorrect use during travel or otherwise.

Step 2 | Wiring

Locate a 12V power source. The Easy Reel™ Motorized Spooler will draw up to 10 amps of power. So make sure the line you choose has a fuse of at least 10 amps. Connect the red wire to the (+) and the black to the (-).

Step 3 | Storage

Depending on how the Easy Reel™ Motorized Spooler is mounted will affect the direction the switch will reel the cord in or out. Push the switch and keep it pressed to reel up the cord.

Step 4 | Storage

For Detachable AMP Cord: Insert the plug end of the cord into one of the holes in the center of your Easy Reel™ Motorized Spooler and slide the cord to either the right or left side of the inner spool.

For Hard-Wired AMP Cord: Insert the socket end of the cord into one of the holes in the center of your Easy Reel™ Motorized Spooler and slide the cord to either the right or left side of the inner spool.

Step 5 | Storage

While holding the cord in one hand, begin winding the cord using the Easy Reel™ Handle. Guide the cord from side-to-side as you coil the cord.

NOTE: Holding a rag in the hand that guides the cord will help clean to cord as you store it in your spooler.

Step 6 | Removal

Unreel by pushing the switch and keeping it pressed. Do the opposite direction as was done for the reeling.



Above. Beyond. Always.

TROUBLE SHOOTING

If the motor or reel doesn't turn when the switch is pressed.



Check for the over load reset button under the switch. Press it in to reset.

If the motor or reel doesn't turn.



Check to make sure 12V power is coming from the power source.

If there is power but it still doesn't work.



Remove the motor cover by taking out the 2 Allen screws and gently pull the cover back to check for any loose connections between the motor, switch, or the reset switch.

If you have any questions regarding the installation procedure or have difficulty with any of the steps, please give us a call at **574-293-1581** or email **parts@morryde.com**.

At MORryde, we have a passion for solving problems. Whether we're fabricating custom solutions, modifying a commercial chassis, or creating our innovative products, we answer to a wide range of markets and deliver on a variety of needs. At MORryde, it's simply about doing MORE for our customers, and it doesn't stop at the sale. We stand behind our products, believing in quality first, service always. No matter the issue, we'll be the first to respond and the last to be satisfied. In short, we build better — together.

VERSION 5



Above. Beyond. Always.

574.293.1581 • MORryde.com •    