

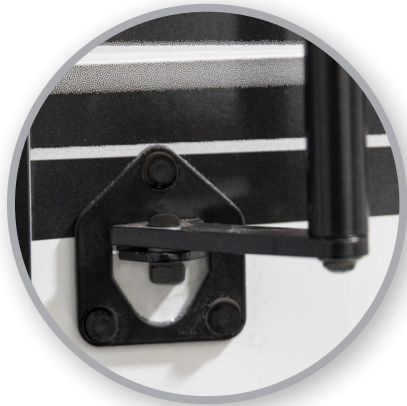
# LATCH EXTENDER



## The Latch Extender offers additional leverage and stability when getting into your RV.

The longer handle and larger gripping surface allows you to easily open your door without taking those extra steps up and down.

- Attaches to door lock
- Longer handle = greater gripping surface
- Easier to reach and open door



Scan the QR code to watch the qualifier and installation video.

SP54-200



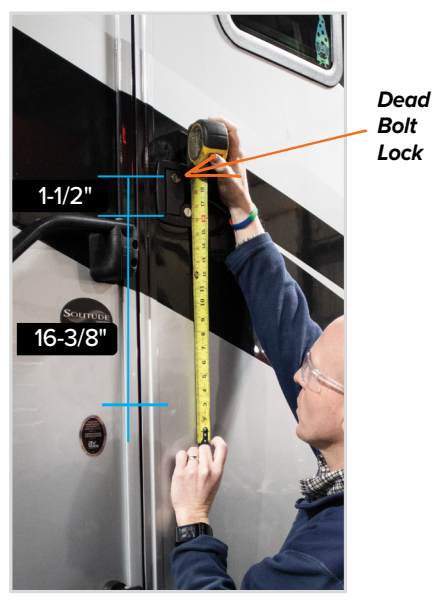
Above. Beyond. Always.

# LATCH EXTENDER INSTALLATION



## STEP 1

1-1/2" clearance above the center of the dead bolt lock and 16-3/8" clearance below the dead bolt lock is required for the Latch Extender to fit.

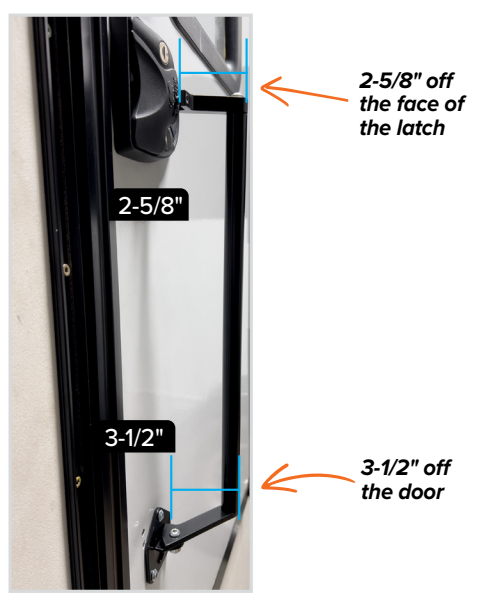


## STEP 2

A total width of 5-3/4" clearance is needed from the edge of the door to the outer edge of the Latch Extender.

## STEP 3

2-5/8" off the face of the latch and 3-1/2" off the door are required to ensure that when the door is open, the latch extender doesn't collide with the sidewall of the RV.



Do NOT pull on Latch Extender when the door is locked. Product/latch damage may occur.



Above. Beyond. Always.

574-293-1581 | MORryde.com



Latch Extender Qualifier & Installation Instructions