

JP54-057

HEAVY-DUTY TAILGATE HINGES



INSTALLATION INSTRUCTIONS

ATTENTION:

Start with the **UPPER** hinge first and only do **ONE** hinge at a time for easy adjustment.

Tools Needed

- T40 Torx Socket
- ½" Socket
- 13mm Wrench
- ½" Wrench
- 10mm Socket



STEP 1

Uninstall the spare tire.



(View of the access hole after the plastic cover has been removed.)



STEP 2

Uninstall the rear, passenger-side, plastic trim.



STEP 4

Close the tailgate with the rear glass open.



STEP 3

Remove the plastic cover over the hinge access hole.



STEP 5

Remove the torx bolts connecting the stock tailgate hinge to the tailgate.

MORryde

HEAVY. DUTY. ADVENTURE.

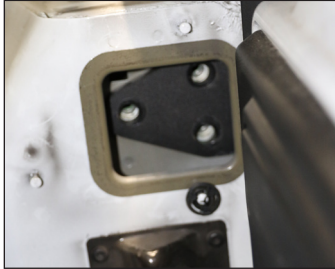
www.MORryde.com • 574.293.1581

JP54-057

HEAVY-DUTY TAILGATE HINGES



INSTALLATION INSTRUCTIONS



STEP 6

Remove the bolts connecting the stock hinge to the tub of the Jeep through the interior access panel.



STEP 9

Fasten the hinge to the tub by reusing the stock hardware.



STEP 7

Line up the holes of the new MORryde Heavy-Duty Tailgate Hinge with the holes in the tailgate and tub.

STEP 10

Repeat steps 4–8 for the bottom hinge.

STEP 11

Reinstall the spare tire once both hinges are installed.



STEP 8

Fasten the hinge to the tailgate with the supplied M8 bolts.



MORryde

HEAVY. DUTY. ADVENTURE.

www.MORryde.com • 574.293.1581