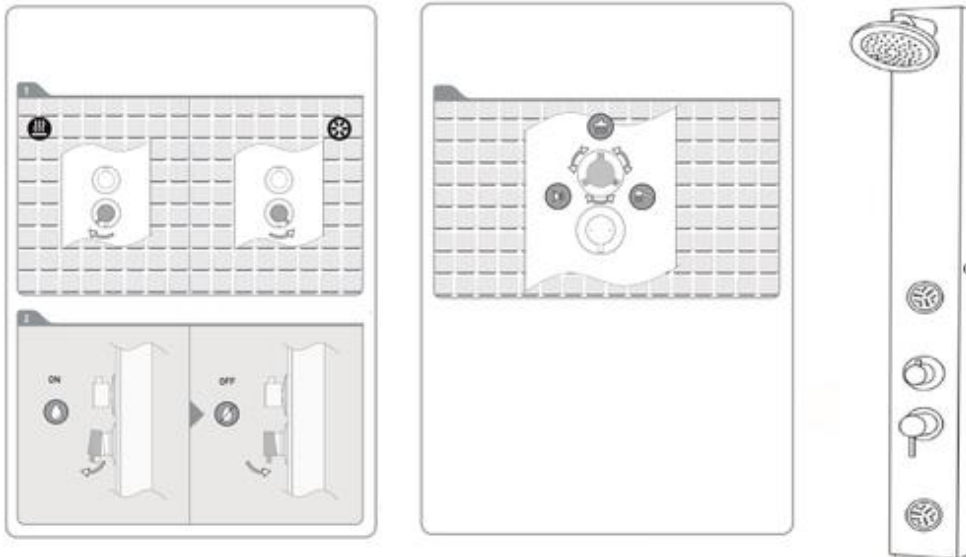


# USER'S MANUAL

## I. To use:

- 1) To change water flow: Turn flow control knob clockwise to switch water flow between shower head, body jets, hand shower or spout.
- 2) Turn shower head or hand shower dial to choose one of five water flow settings.



## II. Accessories:

Panel body, dilate screw, support hang bracket, screw, shower head, shower hose w/2 gaskets, hand shower

## III. Important safety information

- \*Use this product only as instructed.
- \*Do not direct body jets on eyes, ears and other sensitive areas.
- \*Use your shower controls to set water pressure and temperature to your comfort.
- \*Do not use full power of body jets on severely swollen or painful to touch body areas without consulting your physician.
- \*Instruct all users on proper use of this product and provide supervision to children and disabled.
- \*Prevent water flow contact with light bulbs and electric appliances.
- \*Minimum water pressure=1.5kgs, Maximum water pressure=5kgs

