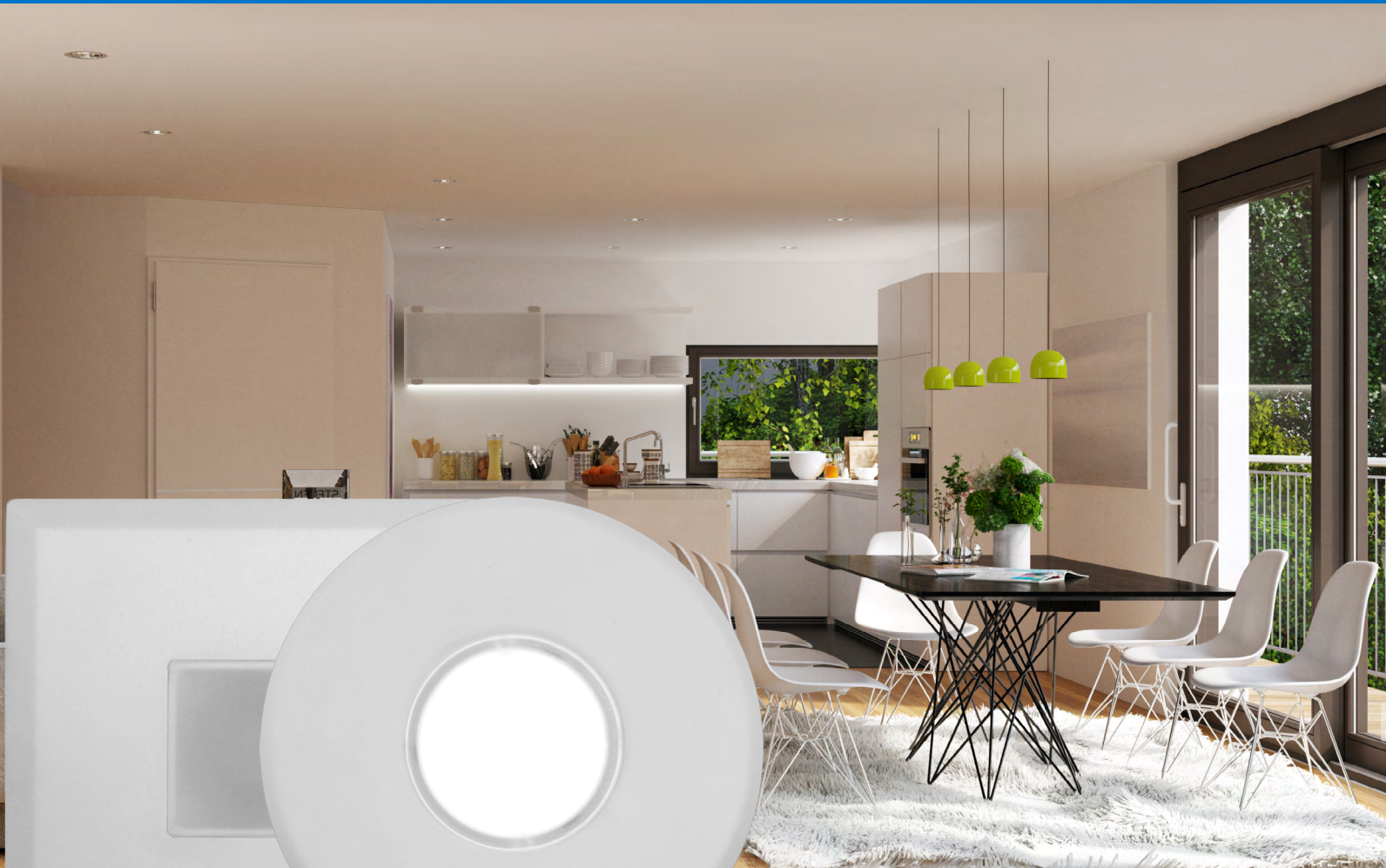


**NICOR**<sup>®</sup> | **LED**

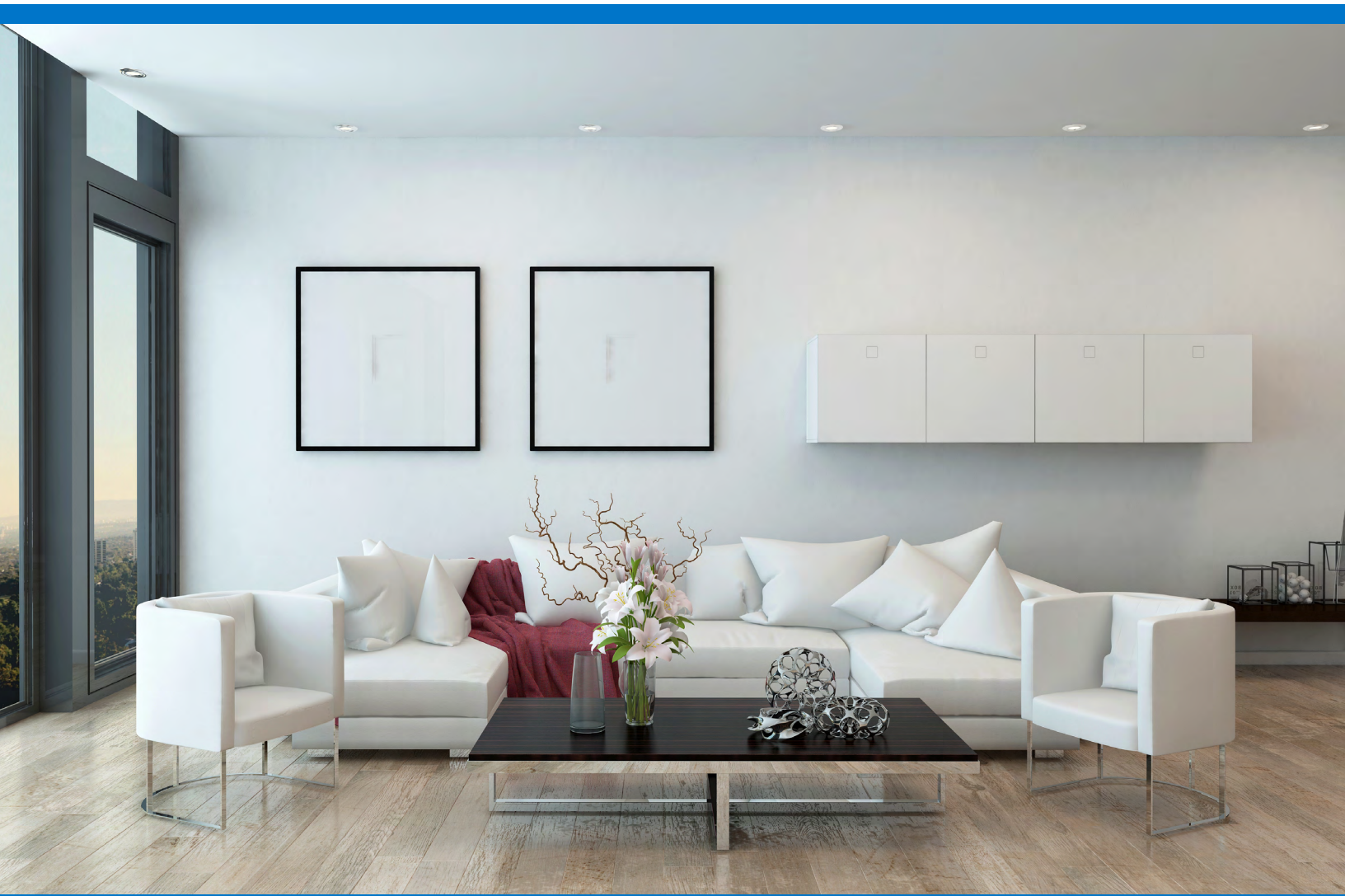
**SUREFIT**

Ultra Slim Surface Mount **LED** Downlight



**Think Inside the J-Box  
for Your Next Downlight Solution**

# SureFit Will Revolutionize Your Thinking



**The innovative SureFit Surface Mount LED Downlight** features a custom-designed, integrated driver for quick and easy installation into a 4/0 metallic or non-metallic J-Box with minimum 20 cubic inch volume. Simply mount the fixture directly to the J-Box using the two included screws. Removable, interchangeable trim plates also offer flexibility delivering eight distinct styles with a single fixture. Available in white, black, nickel and oil-rubbed bronze with either a round or square aperture, this downlight presents a tight profile that sits almost flush to the ceiling to enhance the visual aesthetic of any living space. It's easy to add light with minimal effort in residential and light commercial spaces including living rooms, bedrooms, home theaters, corridors, offices, retail and more.



# Ultra Slim, Ultra Revolutionary

## Energy Efficient

Dimmable to less than 10% with most TRIAC dimmers

## Delivers Eight Distinct Styles

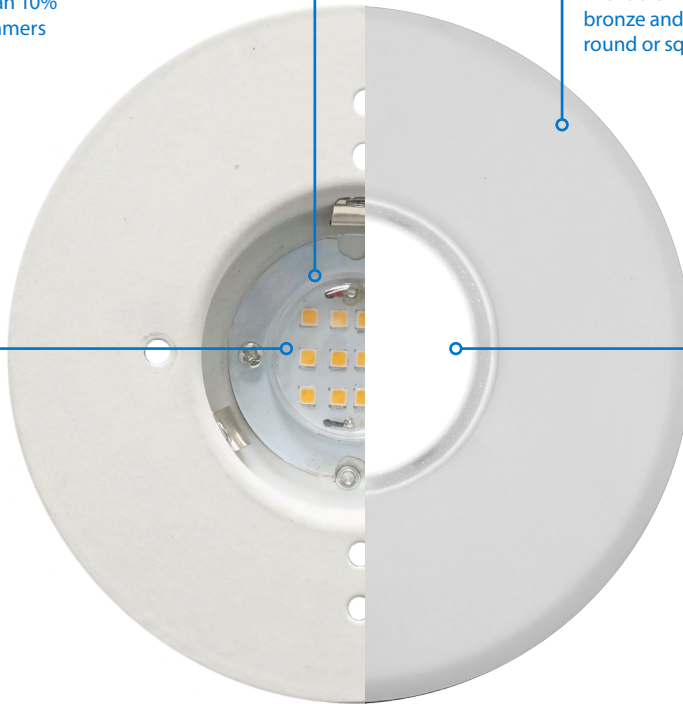
Available in black, nickel and oil-rubbed bronze and paintable white with either a round or square aperture

## High Performance

LEDs offer greater than 90 CRI and R9 greater than 50 for true color rendering

## Uniform Light Distribution

Polystyrene diffuser and specular reflector cone reduces glare while maximizing lumen output



## Thermally Protected

Spun aluminum housing routes heat away from electrical components

## Custom-Designed, Integrated Driver

Low profile, high efficiency driver eliminates need for large interior mounting space



## Ultra Slim Profile

Tight profile that sits almost flush to the ceiling to enhance the visual aesthetic of any space

## Interchangeable Trim Plates

Removable trim plates offer design flexibility with a single fixture



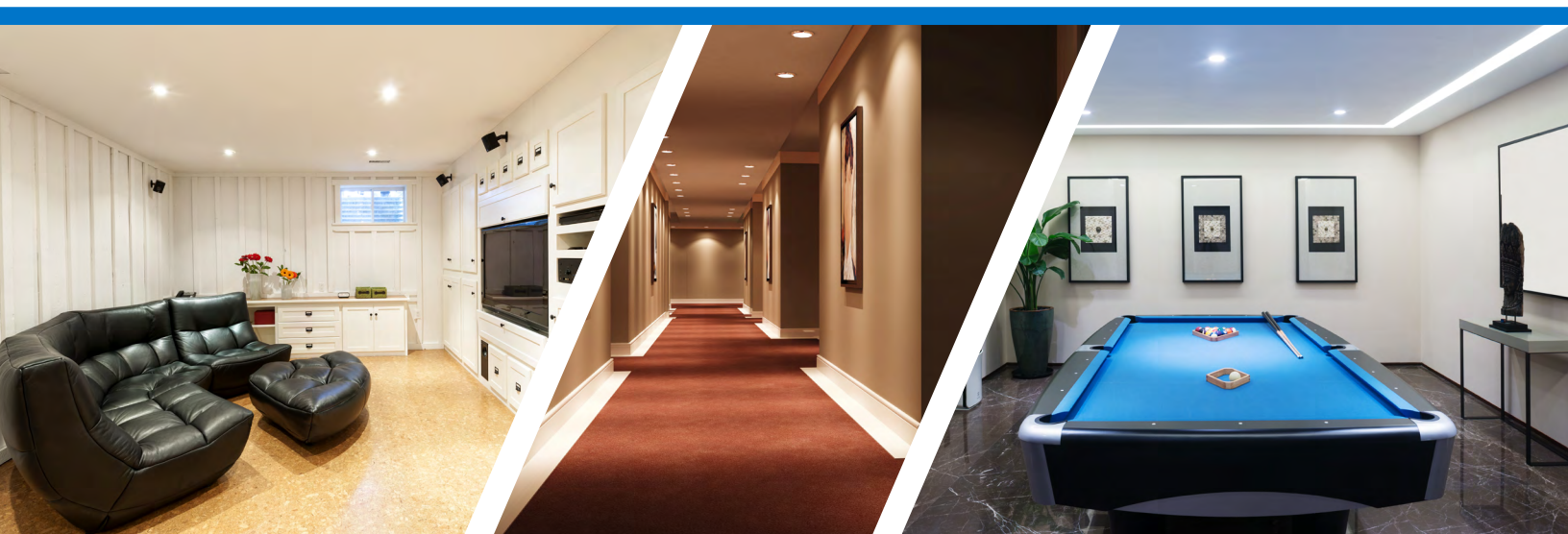
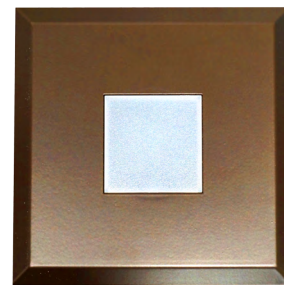
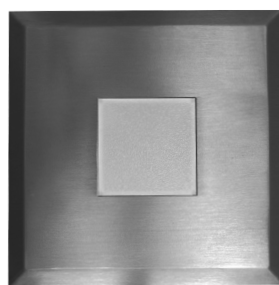
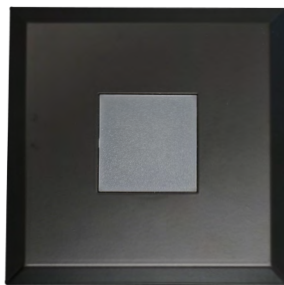
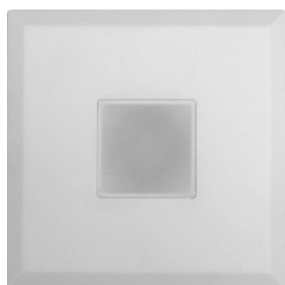




# Removable, Interchangeable Trims Deliver Eight Distinct Designs

Multiple Color Choices, Versatile Apertures

White • Black • Nickel • Oil-Rubbed Bronze





# So Slim It's Sure to Fit Any Application

## Junction Box Mounting Applications

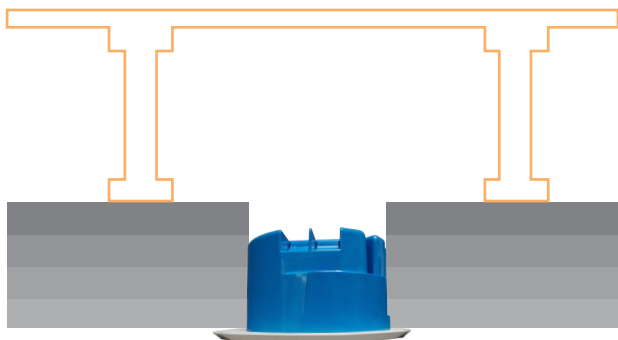
**Concrete**



**Insulation- batting or spray foam**



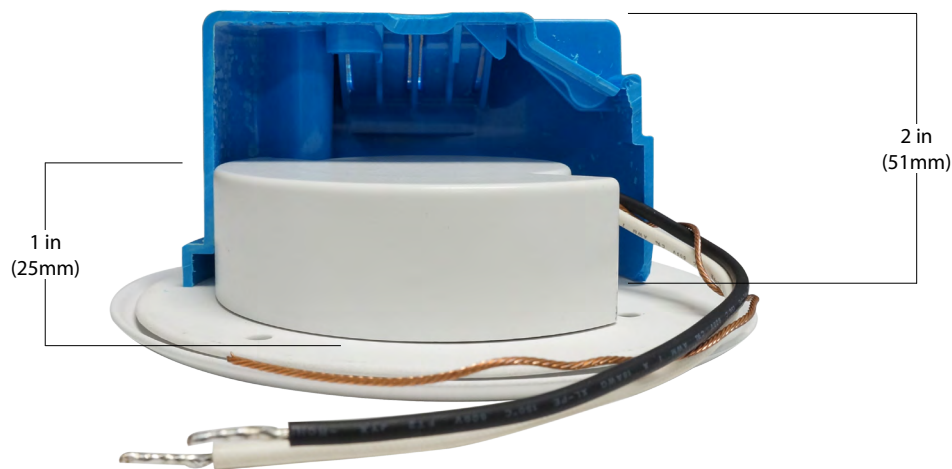
**Fire-rated with appropriate J-Box**



**Framing**



## Tight Spaces Are Effortless for SureFit





# Speed Up Installation by Mounting Directly to the J-Box

## SureFit Compatible Junction Boxes\*



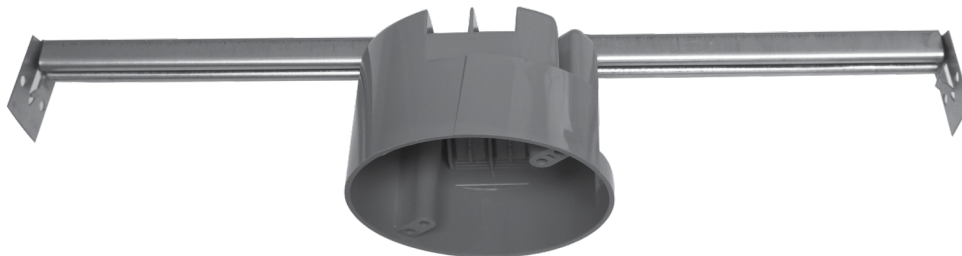
4" round new work non-metallic light fixture box  
20in<sup>3</sup> or greater, 4" x 2 3/16"



4" Octagon light fixture steel box  
4" x 4" x 1 7/16"



4" Octagon deep light fixture steel box  
4" x 4" x 2 1/8"



4" round new work non-metallic light fixture box with hanger bar  
20in<sup>3</sup> or greater, 4" x 2 3/16"

\*This is a sampling of the junction boxes compatible with SureFit, and is not an exclusive list. NICOR recommends using 20in<sup>3</sup> or greater.

## SureFit J-Box Installation



## Easy Installation, No Housing Needed

Included screws fasten directly to most any standard 4/0 metallic or non-metallic J-Box with minimum 20 cubic inch volume



## No Need for Wirenuts

Four-port poke-in connectors included





# SUREFIT

## Ordering Information

### Construction

Spun aluminum housing routes heat away from electrical components  
 Custom designed, integrated driver allows for use in non-metallic 4" and 4/O J-Boxes  
 Detachable round steel and square die cast aluminum trim

### Optical System

Polystyrene diffuser creates uniform light distribution that reduces glare while maximizing lumen output

### Electrical

Utilizes high performing LEDs with a greater than 90 CRI and an R9 greater than 50  
 Dimmable to less than 10% with most standard TRIAC dimmers.  
 Operating temperature of 0° to 120°F (-18°C to 49°C)  
 Input voltage of 120VAC  
 TM-21 Reported L70(6K) hours >36,000  
 LM-79, LM-80 testing performed in accordance with IESNA standards  
 Meets FCC Part 15, Subpart B, Class B standards for conducted and radiated emissions

### Finish

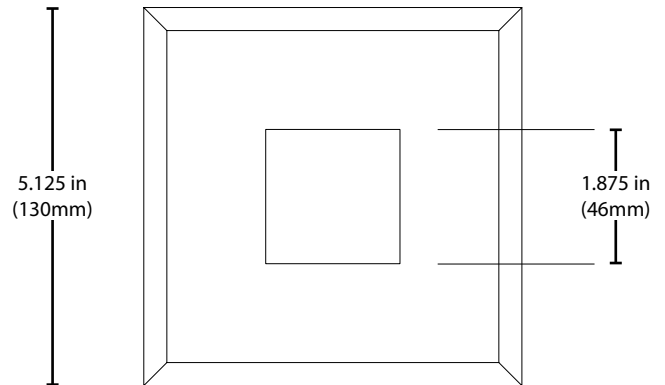
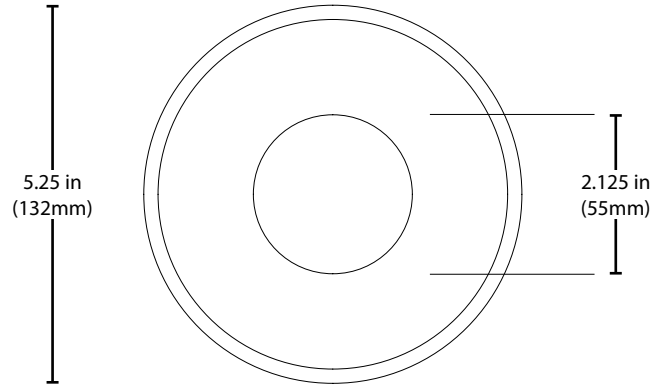
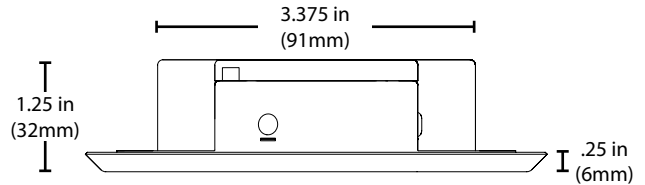
White powder coat finish standard  
 Optional trims available in Black, Nickel, Oil-Rubbed Bronze, and White  
 Optional trims available in Round or Square

### Installation

Easy installation in any 4/O J-Box and 4" non-metallic J-Box of 20 in<sup>3</sup> volume or greater  
 Fixture mounts directly to J-Boxes with two screws  
 Removable trim allows for easy mounting while providing a seamless trim finish  
 Four-port poke-in connectors included  
 For installations where power surge may be possible, NICOR recommends installing additional surge protection at the electrical distribution panel

### Warranty

5-year limited system warranty standard  
 Warranty does not cover product failure due to an overvoltage event (power surge)



Performance Data			
Model Number	Lumens	Watts	Lumens/Watt
DLF-10-120-2K-WH	613	9.66	63.5
DLF-10-120-3K-WH	639	9.66	66.1
DLF-10-120-4K-WH	664	9.66	68.7
DLF-10-120-5K-WH	664	9.66	68.7

Ordering Information				
				<i>Example: DLF-10-120-3K-WH</i>
Series	Version	Voltage	CCT's	Color
DLF	10 (Version 1)	120	2K (2700 K)	WH (White)
			3K (3000 K)	
			4K (4000 K)	
			5K (5000 K)	

Accessory Ordering Information				
				<i>Example: DLF-10-TRIM-RD-NK</i>
Series	Version	Accessory Type	Shape	Accessory Color
DLF	10 (Version 1)	TRIM	RD (Round)	NK (Nickel)
			SQ (Square)	OB (Oil-Rubbed Bronze)
				BK (Black)
				WH (White)

**Warehouse Locations**

Albuquerque, NM  
Atlanta, GA  
Detroit, MI  
Miami, FL  
San Antonio, TX

Syracuse, NY  
Indianapolis, IN  
Hayward, CA  
Wood Dale, IL

**T 800.821.6283**

F 800.892.8393

[www.nicorlighting.com](http://www.nicorlighting.com)

2200 Midtown Pl. NE  
Albuquerque, NM 87107 USA



LIT-DLF-SUREFIT-10PK

©2017 NICOR® • ALL RIGHTS RESERVED

