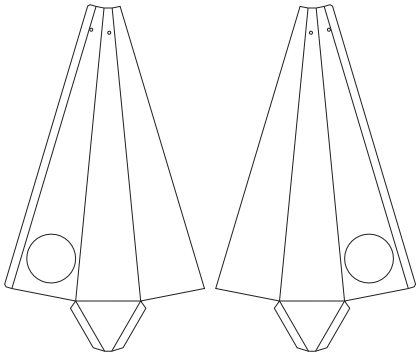


COUGH GUARDS

ASSEMBLY INSTRUCTIONS

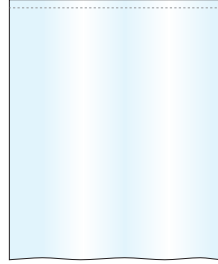
CONTENTS

Left & Right Pylons



Dowel Rod

Clear Curtain



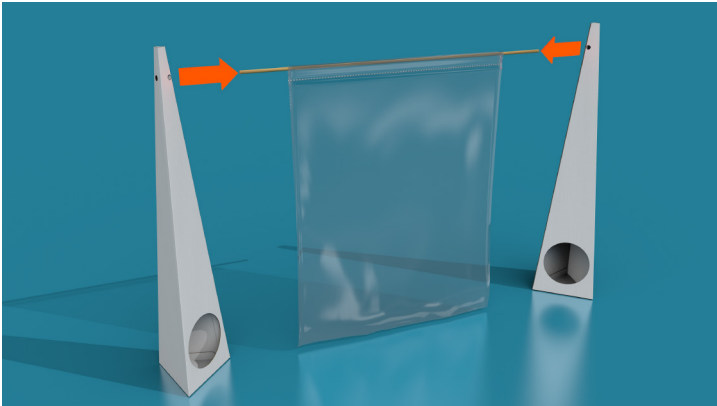
HANDY TIPS

- Wash your hands often with soap and hot water for at least 20 seconds.
- If soap and water are not readily available, use a hand sanitizer that contains at least 60% alcohol.
- Avoid touching your eyes, nose, and mouth.
- Avoid close contact with people by using Cough Guards!

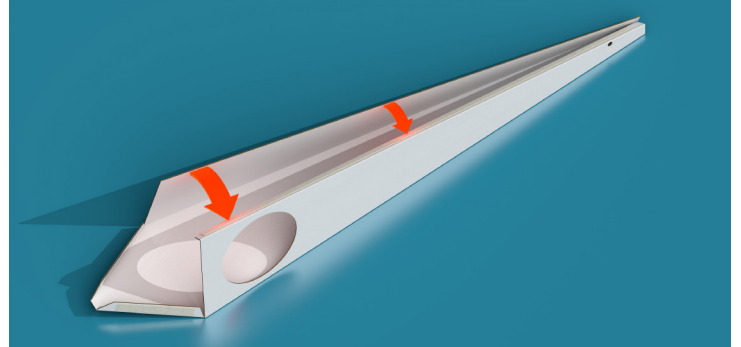
2 Insert dowel rod through the top pocket on the curtain.



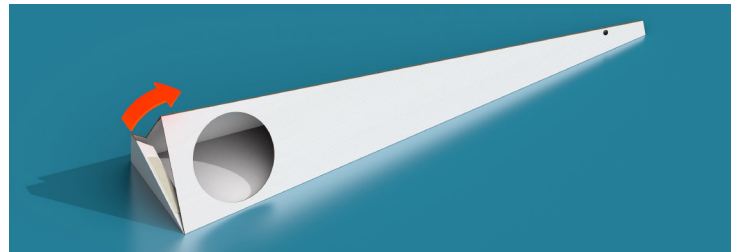
Place ends of dowel rod through holes in pylons.



1 Lay out the Pylons and remove tape from long side, pressing flap firmly to opposite side.

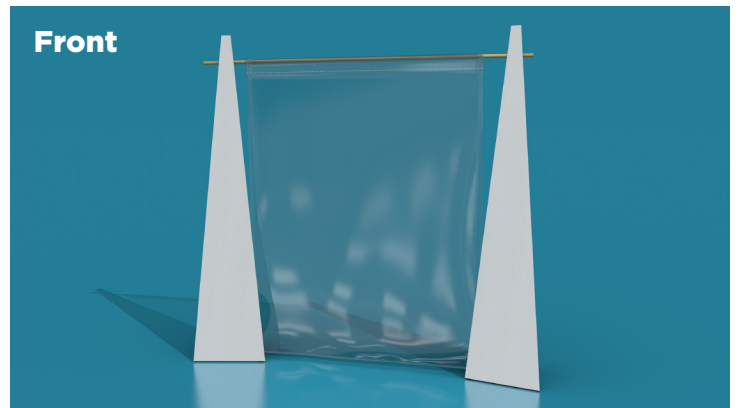


Remove tape from base flaps and reach inside to secure.



3 Place Cough Guard barrier between yourself and the public to help shield from the onslaught of germs.

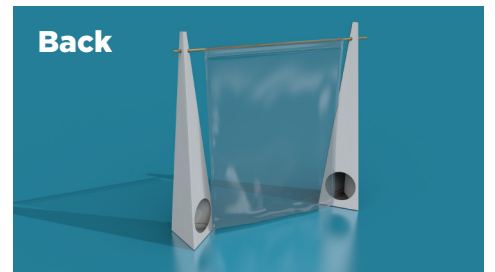
Front



Optional:

Place weights in pylon bases via holes for added stability.

Back



COUGH GUARDS
COUGHGUARDS.COM

POWERED BY:



BIGGER. BOLDER. BRANDING SOLUTIONS.
BRITTENINC.COM / 855.763.8205