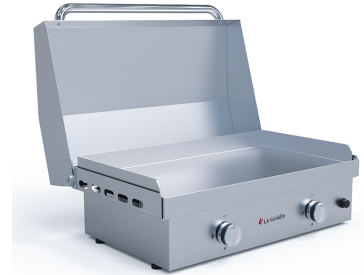




# The Ranch Hand - GFE75



## TECHNICAL FACTS

Size	: 30 ½" x 18 ¾" x 10"
Material / color	: 304 stainless steel – brush finish
Burners	: 2 U shape 304 stainless steel
Grilling surface BTUs	: 18.000
Dual Fuel	: Natural Gas / LP Gas
Ignition	: AA battery electronic igniter
Security	: Thermocouple valves
Size Cooking Surface	: 29 ½ x 15 ¾
Patented Cooking plate	
DUAL PLATE SYSTEM	: 304 stainless steel + cast Iron

Built-in dimensions in non-flammable material : 28¾ x 16¾ x 5¾  
Warranty : Lifetime on cooking plate, other parts 5 years.

Box Size	: 33" x 21¾" x 10½"
Unit Weight	: 99 Lbs
Pieces per pallet	: 10
Pallet size	: 45¼" x 45¼" x 76"
Pallet total weight	: 1045Lbs



## LID FOR The Ranch Hand GFE75- GFLID75



### TECHNICAL FACTS

Size	: 31" x 22,5" x 6"
Material	: 304 stainless steel – brush finish
Box Size	: 34" x 22" x 7"
Weight	: 23 Lbs
Pieces per pallet	: 20
Pallet size	: 45¼" x 45¼" x 76"
Pallet total weight	: 515 Lbs



# CART FOR The Ranch Hand GFE75 - GFCART75



## TECHNICAL FACTS

Size	: 56 ¾" x 35 " x 19"
Material	: 304 stainless steel – brush finish
Wheel type	: 2 Strong Rubber wheels
Box Size	: 39" x 22" x 12 ¾ "
Weight	: 77 Lbs
Pieces per pallet	: 10
Pallet size	: 45¼" x 45¼" x 70"
Pallet total weight	: 825 Lbs



# INSULATE LINER FOR The Ranch Hand GFE75 - GFLINER75



## TECHNICAL FACTS

Built in Size	: 31½" x 17½" x 7¼"
Material	: 304 stainless steel – brush finish
Box Size	: 33" x 19" x 8 ½"
Weight	: 29 Lbs
Pieces per pallet	: 10
Pallet size	: 45 ¼" x 45 ¼" x 56"
Pallet total weight	: 345 Lbs



# WEE GRIDDLE 16 - GFE40



## TECHNICAL FACTS

Size	: 17 ¼" x 18 ¾" x 12,5"
Material / color	: 304 stainless steel – brush finish
Burners	: 1 U shape 304 stainless steel
Grilling surface BTUs	: 9000
Dual Fuel	: Natural Gas / LP Gas
Ignition	: AA battery electronic igniter
Security	: Thermocouple valve
Size Cooking Surface	: 16x 15 ¾
Patented Cooking plate	
DUAL PLATE SYSTEM	: 304 stainless steel + cast Iron

Built-in dimensions in non-flammable material : 14¾ x 16¾ x 5¾  
Warranty : Lifetime on cooking plate, other parts 5 years.

Box Size	: 23"x 19¾" x13"
Unit Weight	: 68Lbs
Pieces per pallet	: 20
Pallet size	: 45¼" x 45¼" x 73"
Pallet total weight	: 1415Lbs



# INSULATE LINER FOR Wee GRIDDLE GFE40 - GFLINER40



## TECHNICAL FACTS

Built in Size	: 17½" x 17½" x 7¼"
Material	: 304 stainless steel – brush finish
Box Size	: 20" x 19" x 8 ½"
Weight	: 22 Lbs
Pieces per pallet	: 20
Pallet size	: 45 ¼" x 45 ¼" x 56"
Pallet total weight	: 550 Lbs

# The Big Texan - GFE105



## TECHNICAL FACTS

Size	: 41 ¾" x 18 ¾" x 12 ½"
Material / color	: 304 stainless steel – brush finish
Burners	: 3 U shape 304 stainless steel
Grilling surface BTUs	: 27000
Dual Fuel	: Natural Gas / LP Gas
Ignition	: AA battery electronic igniter
Security	: Thermocouple valves
Size Cooking Surface	: 41 ¼" x 15 ¾"
Patented Cooking plate	
DUAL PLATE SYSTEM	: 304 stainless steel + cast Iron

Built-in dimensions in non-flammable material : 41 ¼ x 16¾ x 5¾  
Warranty : Lifetime on cooking plate, other parts 5 years.

Box Size	: 44" x 21¾" x 10½"
Unit Weight	: 135 Lbs
Pieces per pallet	: 10
Pallet size	: 45¼" x 45¼" x 76"
Pallet total weight	: 1400Lbs



# LID FOR The Big Texan GFE105 - GFLID105



## TECHNICAL FACTS

Size	: 42 ¼" x 22 ½ " x 6"
Material	: 304 stainless steel – brush finish
Box Size	: 45" x 22" x 7"
Weight	: 34 Lbs
Pieces per pallet	: 10
Pallet size	: 45¼" x 45¼" x 76"
Pallet total weight	: 400 Lbs





## INSULATE LINER FOR The Big Texan GFE105 - GFLINER105



### TECHNICAL FACTS

Built in Size	: 43" x 17½" x 7¼"
Material	: 304 stainless steel – brush finish
Box Size	: 45" x 19" x 8 ½"
Weight	: 35 Lbs
Pieces per pallet	: 10
Pallet size	: 45 ¼" x 45 ¼" x 56 "
Pallet total weight	: 405 Lbs