



USER GUIDE

**POWER**<sup>™</sup>  
sodastream<sup>®</sup>

 For your safety, please read this User Guide before using the Sparkling Water Maker. Save these instructions and provide them to any subsequent users.

For more details and information regarding our Sparkling Water Makers, including how to use and troubleshooting guide, please go to [www.corp.sodastream.com](http://www.corp.sodastream.com).

# USER LICENSE

## FOR ONE SODASTREAM CYLINDER NOT FOR SALE

### PROPERTY OF SODA-CLUB (CO2) GMBH OR ITS AFFILIATES PROVIDED UNDER LICENSE

This is a legally binding document between Soda-Club (CO2) GmbH of Switzerland or its affiliates ("SodaStream") and the consumer regarding the right to use a SodaStream CO<sub>2</sub> Cylinder (the "Cylinder").

To protect users' safety and health, various directives and regulations govern and regulate the use, refilling, maintenance, retesting and repair of the Cylinder. SodaStream possesses the legally required knowledge and expertise to be responsible for strict legal compliance. This can only be guaranteed if the Cylinder is maintained, examined, retested and refilled by it. Thus, the Cylinder remains the property of SodaStream and is provided under License.

1. When empty, please return the Cylinder to either SodaStream or an authorized SodaStream distributor in exchange for a full Cylinder, for the price of the gas refill only. This License will continue to bind the use of each subsequent Cylinder.
2. Refilling an empty Cylinder by third parties could be risky. Unauthorized refilling may violate the law and infringes SodaStream's rights. SodaStream only warrants the safety of Cylinders refilled by it, bearing a Soda-Club/SodaStream tamper proof valve seal.
3. If you return the Cylinder to SodaStream or an authorized SodaStream distributor, in good condition, without exchanging it for a full one, you will be entitled to a return fee of \$1 AUD/NZD.
4. The Cylinder, together with this User License, may be transferred to a third party provided the third party agrees to be bound by the conditions and ownership rights expressed herein. Possession of this User License proves the right of its holder to use one Cylinder under the terms herein.

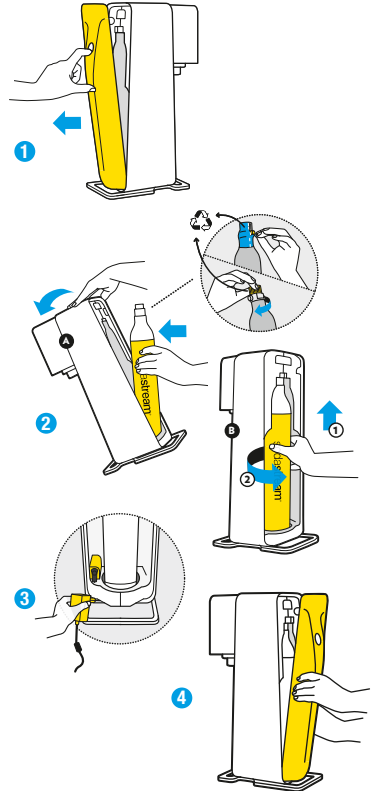
The laws of Switzerland govern this License.

For questions, please contact SodaStream International BV, Provinciënbaan 16, 5121 DL RIJEN, The Netherlands.

# SET UP

## INSTALLING THE CO<sub>2</sub> CYLINDER

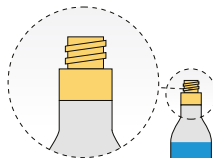
1. Place the SodaStream® Power™ Sparkling Water Maker on a flat sturdy surface and remove the back cover.
2. Remove seal and cap from the SodaStream CO<sub>2</sub> Cylinder.  
**WARNING! Never insert or replace the CO<sub>2</sub> Cylinder while a Carbonating Bottle is installed in the Sparkling Water Maker. This can cause the Carbonating Bottle to be ejected or burst.** Tilt the Sparkling Water Maker forward and insert the CO<sub>2</sub> Cylinder in the back of the Sparkling Water Maker.  
 Gently raise the CO<sub>2</sub> Cylinder and tighten by turning to the right until it is firmly held in place. **WARNING! Hand-tighten only. DO NOT use tools; this can damage the Sparkling Water Maker or CO<sub>2</sub> Cylinder. This may result in an uncontrolled flow of CO<sub>2</sub> gas, causing the Carbonating Bottle to burst and result in personal injury or property damage.**
3. Connect the power cord to your Sparkling Water Maker. Run the cord through the slots in the base. Insert the plug into the wall outlet. The buttons will light up. Only use an original SodaStream power adapter.
4. Reinstall the back cover. Now you are ready to create the bubbles.



## SODASTREAM® CO<sub>2</sub> SCREW SYSTEM CYLINDER

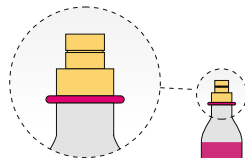
### COMPATIBLE SODASTREAM® CO<sub>2</sub> SCREW SYSTEM CYLINDER

Please note that the SodaStream® Power™ is compatible with the SodaStream® CO<sub>2</sub> Screw System Cylinder and is NOT compatible with the SodaStream® Quick Connect Cylinder.

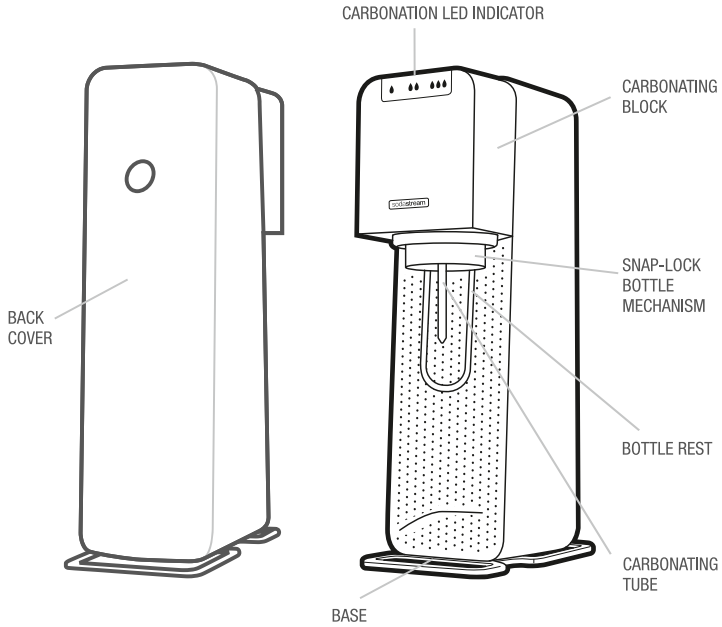


Use Only SodaStream  
CO<sub>2</sub> Screw System Cylinder

### NON-COMPATIBLE CO<sub>2</sub> QUICK CONNECT CYLINDER

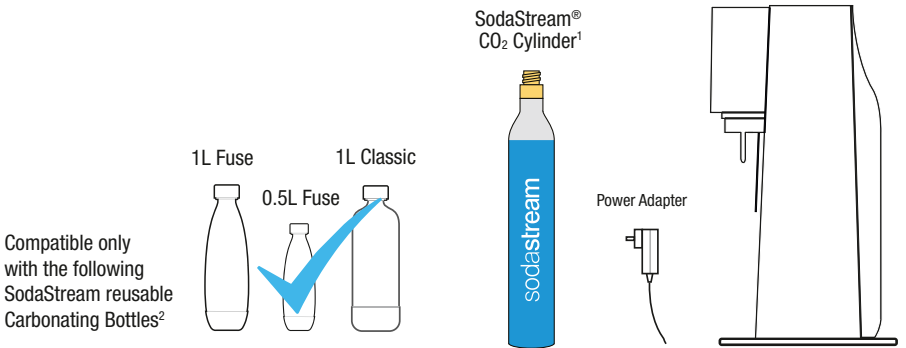


# OVERVIEW



# SYSTEM

SodaStream® Power™ Sparkling Water Maker



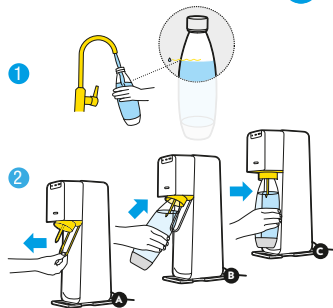
Compatible only with the following SodaStream reusable Carbonating Bottles<sup>2</sup>

<sup>1</sup> 60 L SodaStream® CO<sub>2</sub> Cylinder (under license) makes up to 60 L of sparkling water depending on the level of carbonation and type of Sparkling Water Maker.

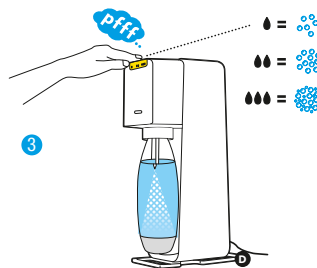
<sup>2</sup> Actual shape of bottle may differ.

## CREATE THE BUBBLES

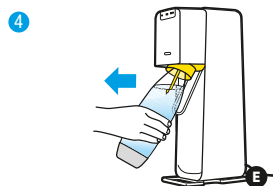
- Fill the Carbonating Bottle with cold water up to the fill line. **WARNING! Do not carbonate anything other than water. Other liquids can contaminate and clog internal parts, potentially resulting in excessive pressure, bottle failure during carbonation and serious injury. Never carbonate after flavoring has been added.**
- To insert the Carbonating Bottle, make sure that the Carbonating Bottle rest is angled forward. Please make sure you do not pull the carbonating tube. **WARNING! Never use a Sparkling Water Maker with a broken carbonating tube.** This can cause excessive pressure, bottle failure and serious injury. Insert the Carbonating Bottle neck into the Snap-Lock. Push the Carbonating Bottle up and back. The Snap-Lock will hold the Carbonating Bottle.
- The carbonating buttons will light up when the Carbonating Bottle is attached. If the Sparkling Water Maker is not used for 60 seconds, the lights will turn off. The lights will come on when any button is pressed. Carbonate, press as follows to get the carbonation level of your choice:
  - For 1L Carbonating Bottle: Left button (one drop) for light fizz; Middle button (two drops) for medium fizz; Right button (three drops) for strong fizz.
  - For 0.5L Carbonating Bottle: Left button (one drop) for medium fizz; Middle button (two drops) for strong fizz.
- When the desired level of carbonation is achieved, gently pull the Carbonating Bottle towards you until it reaches its fully forward position. This will release the pressure in the Carbonating Bottle and allow the Carbonating Bottle to be released from the Snap-Lock. **WARNING! Do not remove Carbonating Bottle until after hearing the sound of excess CO<sub>2</sub> being released.** Never force the Carbonating Bottle out of the Snap-Lock. Always allow the Sparkling Water Maker to release the Carbonating Bottle. If the Carbonating Bottle does not immediately release from the Snap-Lock wait a few moments. If it still does not release, then push the Carbonating Bottle back into the vertical position and gently pull it towards you again. **Attempting to remove the Carbonating Bottle while it is still pressurized can cause uncontrolled ejection of the Carbonating Bottle and may result in serious injury.**



Note: when inserted correctly, there is a small gap between the bottom of the Carbonating Bottle and the base. Do not carbonate if the Carbonating Bottle is resting on the base, or water will splash out.



Note: You may see small pieces of ice appear in the water during carbonation of very cold water. Any ice created will simply melt.



## CARE

### SPARKLING WATER MAKER CARE

- Never use abrasive cleaners or sharp tools to clean. If needed, use a mild liquid dish soap and a soft damp cloth to gently clean.
- Wipe spills to keep base dry.
- Do not place in water or wash in a dishwasher, doing so will seriously damage your Sparkling Water Maker.

### CARBONATING BOTTLE CARE

- For Carbonating Bottles which are not "dishwasher safe", to clean, rinse Carbonating Bottles with cold or lukewarm water. **WARNING! Do not expose to heat above 50°C. Never wash or rinse in hot water. Do not wash in dishwasher.**
- For "dishwasher safe" Carbonating Bottles, to clean, either wash in dishwasher or rinse Carbonating Bottles with cold or lukewarm water. **WARNING! Do not expose to heat above 70°C.**

## FOR YOUR SAFETY

**SAVE THESE INSTRUCTIONS AND PROVIDE THEM TO ANY SUBSEQUENT USERS.**

**WARNING! Before using the Sparkling Water Maker, to reduce risk of personal injury and damage to your product, please read this important safety information.**

Before allowing anyone to use your Sparkling Water Maker, please be sure they understand how to do so safely. Any servicing or repair should be performed by a SodaStream-authorized service representative. The Sparkling Water Maker is only intended for use by people over the age of 12. People with reduced physical or mental capabilities should only use the product if they are supervised by an adult responsible for their safety and after they have been given instruction concerning the safe use of the product.

### **TO REDUCE THE RISK OF EITHER SERIOUS INJURY OR DAMAGE TO THE SPARKLING WATER MAKER DURING CARBONATION:**

- Only use your Sparkling Water Maker in its upright position, on a flat, stable surface.
- Do not place your Sparkling Water Maker on a hot surface (e.g. kitchen oven/stove) and never use it close to a flame or leave in direct sunlight.
- Carbonate water only.
- Do not add flavor before carbonation. Other liquids (except water) can contaminate and clog internal parts, potentially resulting in excessive pressure and bottle failure during carbonation.
- Do not use the machine if the carbonating tube is broken or missing.
- Check that your Carbonating Bottle is properly connected before carbonating.
- Do not move your Sparkling Water Maker or remove the Carbonating Bottle during carbonation.
- Do not carbonate an empty Carbonating Bottle.

### **CARBON DIOXIDE CO<sub>2</sub> CYLINDER**

To reduce the risk of a CO<sub>2</sub> leak, personal injury and property damage:

- Do not insert a CO<sub>2</sub> Cylinder into the Sparkling Water Maker when a Carbonating Bottle is installed.
- Do not use if damaged. Inspect the CO<sub>2</sub> Cylinder and CO<sub>2</sub> Cylinder valve prior to use for dents, punctures, or other damage. If damaged, contact a SodaStream-authorized service representative.
- Do not tamper with the CO<sub>2</sub> Cylinder in any way, including puncturing, incinerating or removing the valve.
- Do not expose the CO<sub>2</sub> Cylinder to heat above 120°F / 50°C. Protect from sunlight. Store in a well-ventilated area.
- Do not remove a CO<sub>2</sub> Cylinder from the Sparkling Water Maker when it is being operated.
- Do not handle or remove a CO<sub>2</sub> Cylinder while it is discharging CO<sub>2</sub>.
- In the event of a CO<sub>2</sub> leak, ventilate the area, breathe fresh air and if feeling unwell seek immediate medical attention.

### **CARBONATING BOTTLE**

To reduce the risk of bottle failure which can result in personal injury and property damage:

- For Carbonating Bottles not marked as "dishwasher safe", do not expose to heat above 50°C. Never wash or rinse in hot water. Do not wash in dishwasher.
- For "dishwasher safe" Carbonating Bottles, do not expose to heat above 70°C.
- Do not place the Carbonating Bottle next to a heat source such as your kitchen oven/stove.
- Do not leave the Carbonating Bottle in your car.
- Do not place the Carbonating Bottle in the freezer or in extreme cold below 1°C.
- Do not use the Carbonating Bottle if damaged, deformed, changes in shape, scratched, worn, or discolored.
- Do not use a Carbonating Bottle after its expiration date.
- Only carbonate with Carbonating Bottles specifically designed to work with this Sparkling Water Maker, as shown on page 4 above.

### **ELECTRICAL APPLIANCES:**

Only use the power adapter and power lead supplied with the Power™ Sparkling Water Maker. Using a different power adapter or lead may damage the Sparkling Water Maker and the power adapter. If the power adapter (including the power lead and plug) is damaged, contact your local SodaStream Customer Service for a replacement.

To reduce the risk of fire, electric shock and personal injury:

- Do not place the cord, plug or Sparkling Water Maker in water or in any liquid;
- Do not operate the Sparkling Water Maker with a damaged cord or plug;
- Do not let the cord hang over the edge of the table or counter or touch a hot surface.
- Do not use outdoors.

# SODASTREAM LIMITED WARRANTY

## SODASTREAM SPARKLING WATER MAKERS

Great care has been taken to ensure that your Sparkling Water Maker was delivered to you in good condition. SodaStream warrants, subject to the terms and conditions set forth in this limited warranty, that your Sparkling Water Maker will be free of defects in materials and workmanship under normal home use for 2 (two) years following the date of purchase. It is recommended that you register your Sparkling Water Maker online by visiting [www.sodastream.com.au](http://www.sodastream.com.au) and completing the product registration form available on the website.

If your Sparkling Water Maker malfunctions within the warranty period, and we determine the problem is due to faulty workmanship or materials, SodaStream will repair or replace it free of charge at SodaStream's discretion within the limitations set out in this warranty. SodaStream may replace your Sparkling Water Maker with a reconditioned Sparkling Water Maker, or an equivalent one if the model you purchased is no longer available. No refunds shall be given. This limited warranty is available to consumers who purchased the Sparkling Water Maker for personal, family or household use.

### **This warranty DOES NOT cover damages to Sparkling Water Maker resulting from:**

- Abuse, misuse, alteration of the Sparkling Water Maker, or commercial use.
- carbonating liquids other than water.
- Normal wear and tear (e.g. discoloration).
- Product malfunctions that were a result, in whole or in part, by alteration, disassembly, or repair of the Sparkling Water Maker by a servicer other than an authorized SodaStream Service Center.
- the use of CO<sub>2</sub> Cylinders or carbonating bottles other than those approved by SodaStream for use with your Sparkling Water Maker.
- the use of the Sparkling Water Maker with a non-SodaStream power adapter and/or power lead;
- the use of an expired Carbonating Bottle.
- accident, shipment or anything other than normal household use.

This warranty DOES NOT cover the Carbonating Bottles and CO<sub>2</sub> Cylinders.

SodaStream is not liable for incidental or consequential damages. The consumer's sole and exclusive remedy shall be repair or replacement according to the terms and conditions of this warranty. Some local laws do not allow the exclusion or limitation of these damages, so these exclusions may not apply to you. To the extent that this warranty is inconsistent with local law, this warranty shall be deemed modified to be consistent with such local law. You may also have other rights, which vary in accordance with local laws. The benefits given to the consumer by this warranty are in addition to other rights and remedies that may be afforded to the consumer by law in relation to this Sparkling Water Maker.

## **TO OBTAIN WARRANTY SERVICE FOR YOUR SPARKLING WATER MAKER**

If your Sparkling Water Maker is in need of warranty service, please contact SodaStream Customer Service by visiting [www.sodastream.com.au](http://www.sodastream.com.au). A SodaStream representative will give you specific instructions on how to arrange for the shipment of your Sparkling Water Maker, at your expense, to one of our authorized service centers. Only SodaStream, or its agents, are authorized to provide warranty repairs or service to your Sparkling Water Maker.

## **NON-WARRANTY SERVICE**

If SodaStream or its authorized agents determine that the malfunction or damage to your Sparkling Water Maker is not covered by the warranty, SodaStream will repair the Sparkling Water Maker only upon payment of the determined repair charge.

## **FOR AUSTRALIAN RESIDENCE**

Our Sparkling Water Maker comes with guarantees that cannot be excluded under the Australian Consumer Law. Australian residence are entitled to a replacement or refund for a major failure and compensation for any other reasonably foreseeable loss or damage. Australian residence are also entitled to have the Sparkling Water Maker repaired or replaced if it fails to be of acceptable quality and the failure does not amount to a major failure. The issuer of this warranty is SodaStream Australia Pty Ltd., 21 Henderson Road, Knoxfield, Victoria 3180, Australia, Telephone No.: (03) 8706 0200, email: [sales@sodastream.com.au](mailto:sales@sodastream.com.au). Should the Sparkling Water Maker suffer a major failure or other reasonably foreseeable damage, contact us at the above phone number, email or mailing address to present your claim for the warranty. If Australian residence are returning the Sparkling Water Maker in accordance with their rights under the Australian Consumer Law: (a) the Sparkling Water Maker does not need to be in its original packaging to be returned, however you must ensure that the Sparkling Water Maker is adequately protected for transit; and (b) Australian residence will be required to pay any delivery costs when returning items to us, however SodaStream Australia Pty Ltd., will refund reasonable delivery costs if they are entitled to a remedy under the Australian Consumer Law (subject to you providing proof of these costs). The benefits to the Australian consumer given by this warranty are in addition to other rights and remedies that may be afforded to the Australian consumer by law in relation the Sparkling Water Maker.

## **SODASTREAM CO<sub>2</sub> CYLINDERS**

Your Sparkling Water Maker has been designed to operate with a SodaStream CO<sub>2</sub> Cylinder. The use of other CO<sub>2</sub> Cylinders is not recommended as they may not be compatible with a SodaStream Sparkling Water Maker. Damages resulting from the use of a cylinder other than those approved by SodaStream or use of the SodaStream CO<sub>2</sub> Cylinder not in accordance with the instructions included in this User Guide are not covered by the warranty.

The SodaStream CO<sub>2</sub> Cylinder is provided to you under license. The license allows you to exchange your empty Cylinder for a full one for the price of the CO<sub>2</sub> only.

## **SODASTREAM CARBONATING BOTTLES**

Your Sparkling Water Maker has been designed to operate with a compatible SodaStream Carbonating Bottle. Damages resulting from the use of a carbonating bottle other than a compatible SodaStream Carbonating Bottle or use of Carbonating Bottles not in accordance with the instructions included in this User Guide are not covered by the warranty. SodaStream Carbonating Bottles are available from authorized SodaStream retailers.

## **TERMS AND CONDITIONS**

Any and all claims, complaints, demands for judgment or legal actions brought hereunder relating in any way to your Sparkling Water Maker, Carbonating Bottle or CO<sub>2</sub> Cylinder shall be governed by, and construed in accordance with, the laws of the State in which the SodaStream Sparkling Water Maker was purchased and will be subject to binding arbitration as set out under the heading "Dispute Resolution by Binding Arbitration".

## **PRODUCT DISPOSAL INSTRUCTIONS**

Please recycle your expired and damaged Carbonating Bottles in accordance with local recycling laws. The packaging in which SodaStream products are supplied is made of recyclable materials. Contact your local authority for further information on recycling.

## **MACHINE RATING INFORMATION**

Maximum Working Pressure: 116 psi/8 bar. Maximum Allowed Operating Temperature: 104°F/40°C

### **ELECTRICAL:**

Input: 24V DC. Max Current: 0.5 Amp. Max Power Consumption: 12 W

Only use the power adapter and power lead supplied with the Power™ Sparkling Water Maker. Using a different power adapter or lead may cause damage to the Sparkling Water Maker and to the power adapter. If the power adapter (including the power lead and plug) becomes damaged, contact your local SodaStream Customer Service to obtain a replacement.

### **FCC CLASS B NOTICE**

This device complies with Part 15 of the FCC Rules. Operation is subject to the following two conditions:

1. This device may not cause harmful interference.
  2. This device must accept any interference received, including interference that may cause undesired operation.
- NOTE: This equipment has been tested and found to comply with the limits for a Class B digital device, pursuant to Part 15 of the FCC Rules. These limits are designed to provide reasonable protection against harmful interference in a residential installation. This equipment generates, uses, and can radiate radio frequency energy and, if not installed and used in accordance with the instructions, may cause harmful interference to radio communications.

However, there is no guarantee that interference will not occur in a particular installation. If this equipment does cause harmful interference to radio or television reception, which can be determined by turning the equipment off and on, the user is encouraged to try to correct the interference by one or more of the following measures:

- Reorient or relocate the receiving antenna.
- Increase the separation between the equipment and receiver.
- Connect the equipment into an outlet on a circuit different from that to which the receiver is connected.
- Consult the dealer or an experienced radio/television technician for help.

SodaStream is a registered trademark of Soda-Club (CO2) GmbH or its affiliates.

**Imported by:** SodaStream Australia Pty Limited  
21 Henderson Road, Knoxfield VIC 3180, Australia  
Tel: 1300763 278