



USER GUIDE

CRYSTALTM
sodastream[®]

 For your safety, please read this User Guide before using the Sparkling Water Maker. Save these instructions and provide them to any subsequent users.

For more details and information regarding our Sparkling Water Makers, including how to use and troubleshooting guide, please go to **www.corp.sodastream.com**.

USER LICENSE

FOR ONE SODASTREAM CYLINDER NOT FOR SALE

PROPERTY OF SODA-CLUB (CO2) GMBH OR ITS AFFILIATES PROVIDED UNDER LICENSE

This is a legally binding document between Soda-Club (CO2) GmbH of Switzerland or its affiliates ("SodaStream") and the consumer regarding the right to use a SodaStream CO₂ Cylinder (the "Cylinder").

To protect users' safety and health, various directives and regulations govern and regulate the use, refilling, maintenance, retesting and repair of the Cylinder. SodaStream possesses the legally required knowledge and expertise to be responsible for strict legal compliance. This can only be guaranteed if the Cylinder is maintained, examined, retested and refilled by it. Thus, the Cylinder remains the property of SodaStream and is provided under License.

1. When empty, please return the Cylinder to either SodaStream or an authorized SodaStream distributor in exchange for a full Cylinder, for the price of the gas refill only. This License will continue to bind the use of each subsequent Cylinder.
2. Refilling an empty Cylinder by third parties could be risky. Unauthorized refilling may violate the law and infringes SodaStream's rights. SodaStream only warrants the safety of Cylinders refilled by it, bearing a Soda-Club/SodaStream tamper proof valve seal.
3. If you return the Cylinder to SodaStream or an authorized SodaStream distributor, in good condition, without exchanging it for a full one, you will be entitled to a return fee of AUD/NZD \$1.
4. The Cylinder, together with this User License, may be transferred to a third party provided the third party agrees to be bound by the conditions and ownership rights expressed herein. Possession of this User License proves the right of its holder to use one Cylinder under the terms herein.

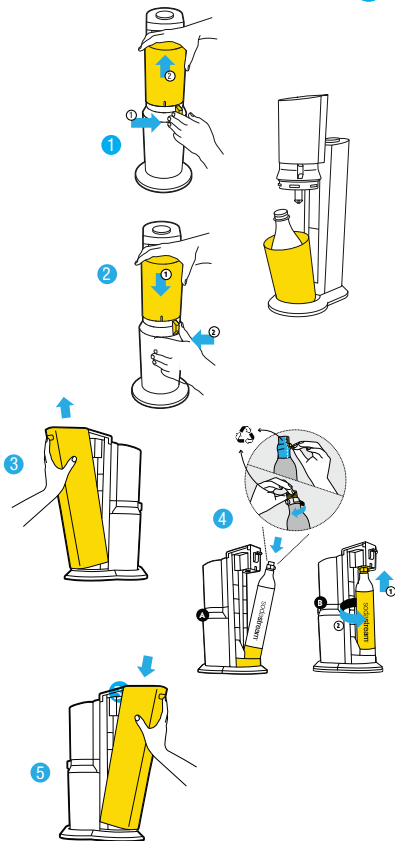
The laws of Switzerland govern this License.

For questions, please contact SodaStream International BV, Provinciënbaan 16, 5121 DL RIJEN, The Netherlands.

SET UP

INSTALLING THE CO₂ CYLINDER

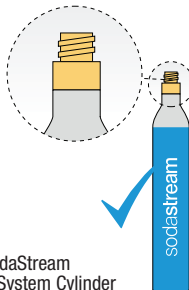
1. Place the SodaStream® Crystal™ Sparkling Water Maker on a flat sturdy surface in an upright position. Turn the carbonating flask lever to the right to the unlocked position. The carbonating head will rise automatically. The carbonating flask will open. Pull the carbonating flask gently forward and remove the SodaStream® Glass Carafe if it is installed in the SodaStream® Sparkling Water Maker.
WARNING! Never insert or replace the CO₂ cylinder while the Glass Carafe is installed in the Sparkling Water Maker. This can cause the Glass Carafe to burst.
2. Return the carbonating flask to the upright position, push and hold the carbonating head down and turn the carbonating flask lever left until it clicks into the locked position.
3. Gently pull the back cover away from the Sparkling Water Maker to remove.
4. Remove seal and cap from the SodaStream CO₂ Cylinder.
WARNING! Never insert or replace the CO₂ Cylinder while a Carbonating Bottle is installed in the Sparkling Water Maker. This can cause the Carbonating Bottle to be ejected or burst. Tilt the Sparkling Water Maker forward and insert the CO₂ Cylinder in the back of the Sparkling Water Maker.
Gently raise the CO₂ Cylinder and tighten by turning to the right until it is firmly held in place. **WARNING! Hand-tighten only. DO NOT use tools; this can damage the Sparkling Water Maker or CO₂ Cylinder. This may result in an uncontrolled flow of CO₂ gas, causing the Carbonating Bottle to burst and result in personal injury or property damage.**
5. Reinstall the back cover. Now you are ready to create the bubbles.



SODASTREAM® CO₂ SCREW SYSTEM CYLINDER

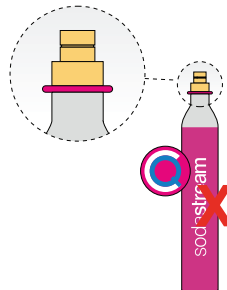
COMPATIBLE SODASTREAM®
CO₂ SCREW SYSTEM CYLINDER

Please note that the SodaStream® Crystal™ is compatible with the SodaStream® CO₂ Screw System Cylinder and is **NOT** compatible with the SodaStream® Quick Connect Cylinder.

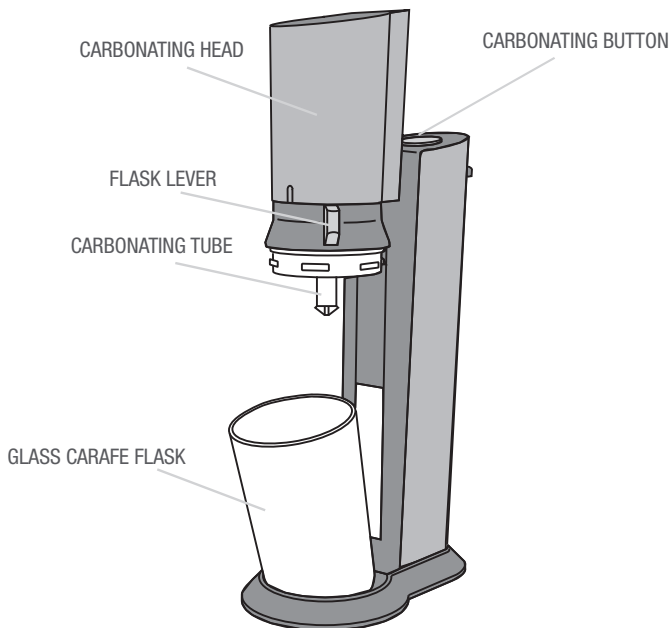


Use Only SodaStream
CO₂ Screw System Cylinder

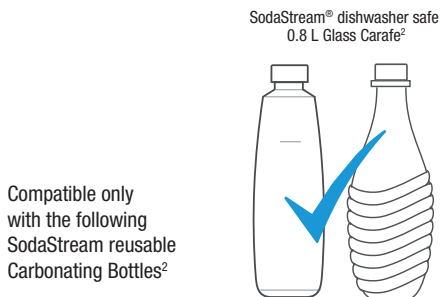
NON-COMPATIBLE SODASTREAM®
CO₂ QUICK CONNECT CYLINDER



OVERVIEW



SYSTEM

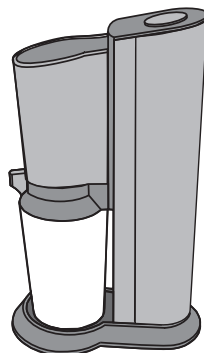


Compatible only with the following SodaStream reusable Carbonating Bottles²

SodaStream® CO₂ Cylinder¹



SodaStream® Crystal™ Sparkling Water Maker



¹ 60 L SodaStream® CO₂ Cylinder (under license) makes up to 60 L of sparkling water depending on the level of carbonation and type of Sparkling Water Maker.

² Actual shape of bottle may differ.

CREATE THE BUBBLES

1. Fill the SodaStream Glass Carafe with cold drinking water up to the fill line. **WARNING! Do not carbonate anything other than water. Other liquids can contaminate and clog internal parts, potentially resulting in excessive pressure, bottle failure during carbonation and serious injury. Never carbonate after flavoring has been added.**
2. Place the SodaStream® Aqua Fizz™ Sparkling Water Maker on a flat sturdy surface in an upright position. Turn the carbonating flask lever to the right to the unlocked position. The carbonating head will rise automatically. **WARNING! Never use a unit with a broken carbonating tube. This can cause excessive pressure, carafe/bottle failure and serious injury.** Tilt the carbonating flask forward and insert the Glass Carafe into the carbonating flask. Return the SodaStream® carbonating flask to the upright position.
3. Push the carbonating head down and hold. Turn the carbonating flask lever left, to the locked position. Push down firmly on the carbonating button for around one second, release and repeat. Repeat 3 times for standard fizz, 4 times for strong fizz, and more for extra strong fizz.
4. When the desired level of carbonation is achieved, please wait 3 seconds and turn the carbonating flask lever to the right to the unlocked position until the carbonating head starts to rise. As you start to turn to the unlock position you will hear the excess gas being safely released from the Glass Carafe.
5. Tilt the SodaStream® carbonating flask forward and remove the Glass Carafe from the SodaStream® Aqua Fizz™ Sparkling Water Maker.
6. Pour and enjoy a fresh sparkling drink!



CARE

SPARKLING WATER MAKER CARE

- Never use abrasive cleaners or sharp tools to clean. If needed, use a mild liquid dish soap and a soft damp cloth to gently clean.
- Wipe spills to keep base dry.
- Do not place in water or wash in a dishwasher, doing so will seriously damage your Sparkling Water Maker.

GLASS CARAFE CARE

- The SodaStream Glass Carafe may be cleaned in a dishwasher.

FOR YOUR SAFETY

SAVE THESE INSTRUCTIONS AND PROVIDE THEM TO ANY SUBSEQUENT USERS.

WARNING! Before using the Sparkling Water Maker, to reduce risk of personal injury and damage to your product, please read this important safety information.

Before allowing anyone to use your Sparkling Water Maker, please be sure they understand how to do so safely. Any servicing or repair should be performed by a SodaStream-authorized service representative.

The Sparkling Water Maker is only intended for use by people over the age of 12. People with reduced physical or mental capabilities should only use the product if they are supervised by an adult responsible for their safety and after they have been given instruction concerning the safe use of the product.

TO REDUCE THE RISK OF EITHER SERIOUS INJURY OR DAMAGE TO THE SPARKLING WATER MAKER DURING CARBONATION:

- Only use your Sparkling Water Maker in its upright position, on a flat, stable surface.
- Do not place your Sparkling Water Maker on a hot surface (e.g. kitchen oven/stove) and never use it close to a flame or leave in direct sunlight.
- Carbonate water only.
- Do not add flavor before carbonation. Other liquids (except water) can contaminate and clog internal parts, potentially resulting in excessive pressure and bottle failure during carbonation.
- Do not use the machine if the carbonating tube is broken or missing.
- Check that your Carbonating Bottle is properly connected before carbonating.
- Do not move your Sparkling Water Maker or remove the Carbonating Bottle during carbonation.
- Do not carbonate an empty Carbonating Bottle.

CARBON DIOXIDE CO₂ CYLINDER

To reduce the risk of a CO₂ leak, personal injury and property damage:

- Do not insert a CO₂ Cylinder into the Sparkling Water Maker when a Carbonating Bottle is installed.
- Do not use if damaged. Inspect the CO₂ Cylinder and CO₂ Cylinder valve prior to use for dents, punctures, or other damage. If damaged, contact a SodaStream-authorized service representative.
- Do not tamper with the CO₂ Cylinder in any way, including puncturing, incinerating or removing the valve.
- Do not expose the CO₂ Cylinder to heat above 120°F / 50°C. Protect from sunlight. Store in a well-ventilated area.
- Do not remove a CO₂ Cylinder from the Sparkling Water Maker when it is being operated.
- Do not handle or remove a CO₂ Cylinder while it is discharging CO₂.
- In the event of a CO₂ leak, ventilate the area, breathe fresh air and if feeling unwell seek immediate medical attention.

SODASTREAM® GLASS CARAFE

To reduce the risk of bottle failure which can result in personal injury and property damage:

- Do not use the Glass Carafe if it is cracked, chipped or damaged in any way. Dispose of the Glass Carafe immediately and replace it with a new one.
- Do not use a glass carafe, other than original SodaStream Glass Carafe that is suitable for the SodaStream® CRYSTAL™.
- Do not subject the Glass Carafe to extreme temperature fluctuations (e.g. do not put hot water in a cold Glass Carafe).
- Do not place the Glass Carafe in the freezer or in extreme cold below 34°F / 1°C.
- **WARNING! In the rare event that your Glass Carafe breaks during carbonation Do Not open the carbonating flask.** Any broken glass particles will be safely contained inside the carbonating flask. Please call your local SodaStream customer service representative for assistance

SODASTREAM LIMITED WARRANTY

SODASTREAM SPARKLING WATER MAKERS

Great care has been taken to ensure that your Sparkling Water Maker was delivered to you in good condition. SodaStream warrants, subject to the terms and conditions set forth in this limited warranty, that your Sparkling Water Maker will be free of defects in materials and workmanship under normal home use for 2 (two) years following the date of purchase. It is recommended that you register your Sparkling Water Maker online by visiting www.sodastream.com.au and completing the product registration form available on the website.

If your Sparkling Water Maker malfunctions within the warranty period, and we determine the problem is due to faulty workmanship or materials, SodaStream will repair or replace it free of charge at SodaStream's discretion within the limitations set out in this warranty. SodaStream may replace your Sparkling Water Maker with a reconditioned Sparkling Water Maker, or an equivalent one if the model you purchased is no longer available. No refunds shall be given. This limited warranty is available to consumers who purchased the Sparkling Water Maker for personal, family or household use.

This Warranty DOES NOT Cover Damages to Sparkling Water Maker Resulting From:

- Abuse, misuse, alteration of the Sparkling Water Maker, or commercial use.
- Carbonating liquids other than water.
- Normal wear and tear (e.g. discoloration).
- Product malfunctions that were a result, in whole or in part, by alteration, disassembly, or repair of the Sparkling Water Maker by a servicer other than an authorized SodaStream Service Center.
- the use of CO₂ Cylinders or carbonating bottles other than those approved by SodaStream for use with your Sparkling Water Maker.
- the use of the Sparkling Water Maker with an adapter connected to the Cylinder valve or to the Sparkling Water Maker.
- the use of an expired Carbonating Bottle.
- accident, shipment or anything other than normal household use.

This warranty DOES NOT cover the Carbonating Bottles and CO₂ Cylinders.

SodaStream is not liable for incidental or consequential damages. The consumer's sole and exclusive remedy shall be repair or replacement according to the terms and conditions of this warranty. Some local laws do not allow the exclusion or limitation of these damages, so these exclusions may not apply to you. To the extent that this warranty is inconsistent with local law, this warranty shall be deemed modified to be consistent with such local law.

You may also have other rights, which vary in accordance with local laws. The benefits given to the consumer by this warranty are in addition to other rights and remedies that may be afforded to the consumer by law in relation to this Sparkling Water Maker.

TO OBTAIN WARRANTY SERVICE FOR YOUR SPARKLING WATER MAKER

If your Sparkling Water Maker is in need of warranty service, please contact your local SodaStream Customer Service by visiting www.sodastream.com.au. A SodaStream representative will give you specific instructions on how to arrange for the shipment of your Sparkling Water Maker, at your expense, to one of our authorised service centres. Only SodaStream, or its agents, are authorised to provide warranty repairs or service to your Sparkling Water Maker.

NON-WARRANTY SERVICE

If SodaStream or its authorized agents determine that the malfunction or damage to your Sparkling Water Maker is not covered by the warranty, SodaStream will repair the Sparkling Water Maker only upon payment of the determined repair charge.

FOR AUSTRALIAN RESIDENCE

Our Sparkling Water Maker comes with guarantees that cannot be excluded under the Australian Consumer Law. Australian residence are entitled to a replacement or refund for a major failure and compensation for any other reasonably foreseeable loss or damage. Australian residence are also entitled to have the Sparkling Water Maker repaired or replaced if it fails to be of acceptable quality and the failure does not amount to a major failure. The issuer of this warranty is SodaStream Australia Pty Ltd., 21 Henderson Road, Knoxfield, Victoria 3180, Australia, Telephone No.: (03) 8706 0200, email: sales@sodastream.com.au. Should the Sparkling Water Maker suffer a major failure or other reasonably foreseeable damage, contact us at the above phone number, email or mailing address to present your claim for the warranty. If Australian residence are returning the Sparkling Water Maker in accordance with their rights under the Australian Consumer Law: (a) the Sparkling Water Maker does not need to be in its original packaging to be returned, however you must ensure that the Sparkling Water Maker is adequately protected for transit; and (b) Australian residence will be required to pay any delivery costs when returning items to us, however SodaStream Australia Pty Ltd., will refund reasonable delivery costs if they are entitled to a remedy under the Australian Consumer Law (subject to you providing proof of these costs). The benefits to the Australian consumer given by this warranty are in addition to other rights and remedies that may be afforded to the Australian consumer by law in relation the Sparkling Water Maker.

SODASTREAM CO₂ CYLINDERS

Your Sparkling Water Maker has been designed to operate with a SodaStream CO₂ Cylinder. The use of other CO₂ Cylinders is not recommended as they may not be compatible with a SodaStream Sparkling Water Maker. Damages resulting from the use of a cylinder other than those approved by SodaStream or use of the SodaStream CO₂ Cylinder not in accordance with the instructions included in this User Guide are not covered by the warranty.

The SodaStream CO₂ Cylinder is provided to you under license. The license allows you to exchange your empty Cylinder for a full one for the price of the CO₂ only.

SODASTREAM CARBONATING BOTTLES

Your Sparkling Water Maker has been designed to operate with a compatible SodaStream Carbonating Bottle. Damages resulting from the use of a carbonating bottle other than a compatible SodaStream Carbonating Bottle or use of Carbonating Bottles not in accordance with the instructions included in this User Guide are not covered by the warranty. SodaStream Carbonating Bottles are available from authorized SodaStream retailers.

TERMS AND CONDITIONS

Any and all claims, complaints, demands for judgment or legal actions brought hereunder relating in any way to your Sparkling Water Maker, Carbonating Bottle or CO₂ Cylinder shall be governed by, and construed in accordance with, the local laws of the country in which the SodaStream Sparkling Water Maker was purchased.

PRODUCT DISPOSAL INSTRUCTIONS

Please recycle your expired and damaged Carbonating Bottles in accordance with local recycling laws. The packaging in which SodaStream products are supplied is made of recyclable materials. Contact your local authority for further information on recycling.

MACHINE RATING INFORMATION

Maximum Working Pressure: 116 psi/8 bar

Maximum Allowed Operating Temperature: 40°C

Minimum Allowed Operating Temperature: 5°C. This will insure that during carbonation, the water vapour going through the valves of the machine will not freeze and block the gas path.

SodaStream is a registered trademark of Soda-Club (CO2) GmbH or its affiliates.

Imported by: SodaStream Australia Pty Limited

21 Henderson Road, Knoxfield VIC 3180, Australia

Tel: 1300763 278