

TEMPLE STUDIO X KNEELAND CO.

NEW WAVE in PURPLE

New Wave is often used to describe an experimental technique in an artistic field, which was exactly our goal with this rug. The wavy stripes and more structured lines along with New Wave's goth color inspiration create a harmonious balance between fluidity and stucture.

DESIGN COLOR

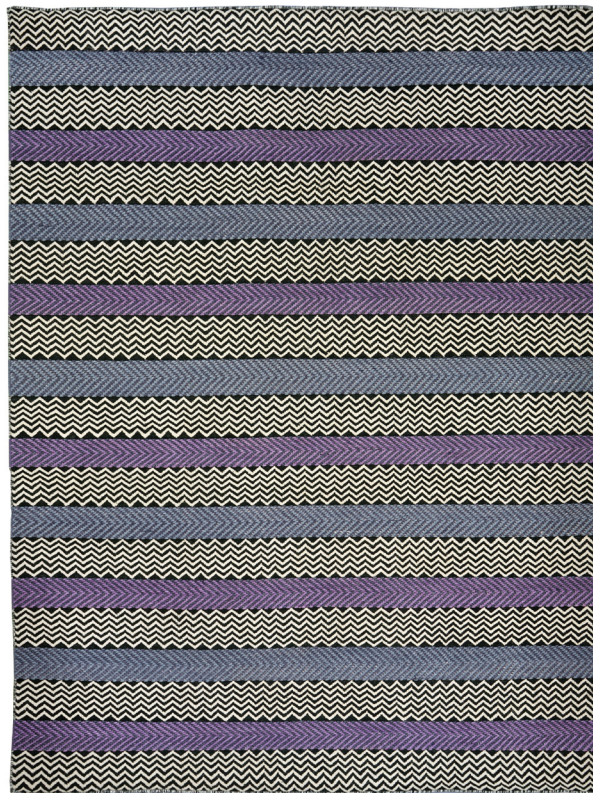
New Wave Purple

CONTENT ORIGIN OF RUG

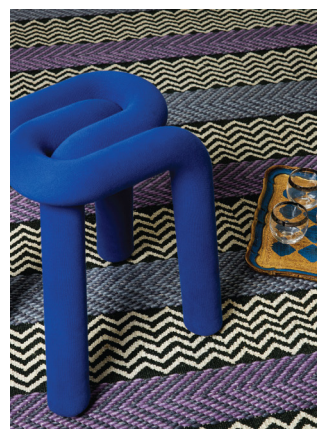
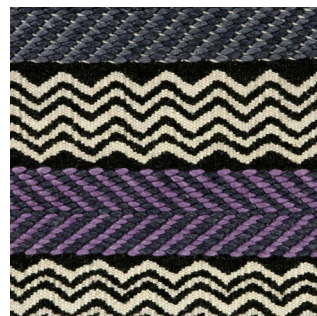
Wool Handknotted in Nepal

LEAD TIME

Made to Order – Approx 12-14 weeks



8x10 ft size (not to scale)



ABOUT THE COLLABORATION

Kneeland Co., a Los Angeles based vintage textile library, was founded in 2010 by Joanna Williams as a way of sharing her discoveries, inspirations, and ideas. Kate Temple Reynolds, of Temple Studio, met Joanna back in 2017 and was an immediate fan girl of Joanna's extensive collection, as well as her magnetic personality and vast knowledge of historic patterns and motifs.

The two companies have now collaborated on a collection of rugs, aiming to share a bit of the great sense of adventure that resides within the Kneeland name.

VISIT

51 E. 12th St, 4th Floor
New York, NY 10003

CONTACT

hello@templestudiony.com
(917) 985-8151

ONLINE

templestudiony.com
@templestudiony