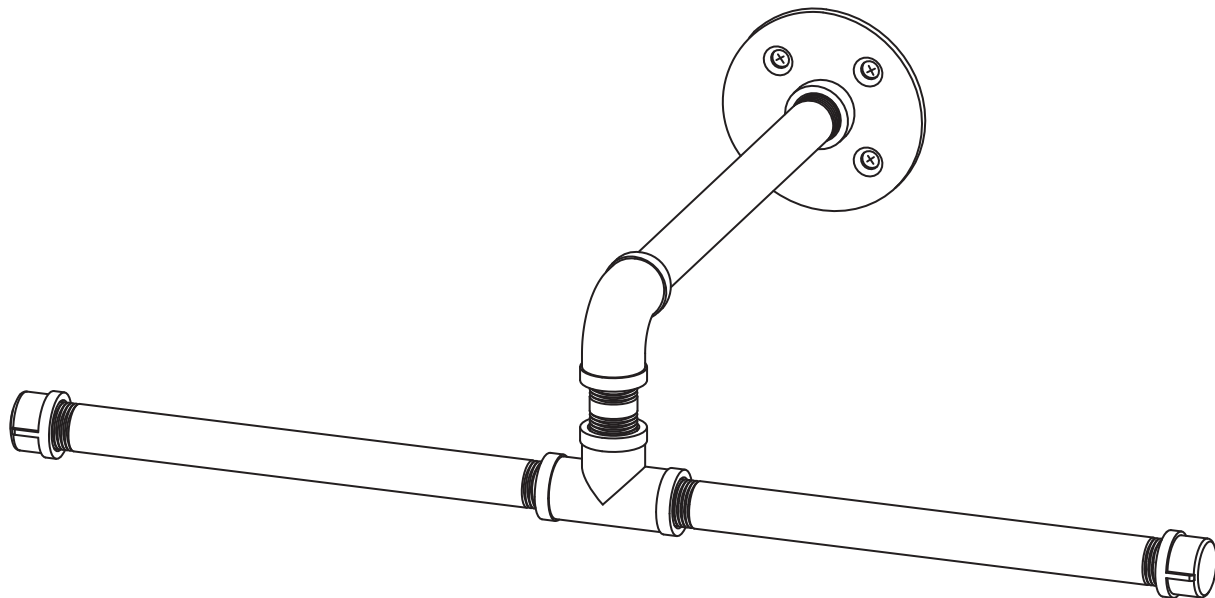


# PIPE DECOR®

# 365MWD60

## WALL-MOUNTED T-STYLE CLOTHING RACK-KIT

NEED HELP OR ADVICE ON PUTTING THIS KIT TOGETHER? MISSING PIECES?  
EMAIL US AT [SUPPORT@PIPE-DECOR.COM](mailto:SUPPORT@PIPE-DECOR.COM) FOR ANY QUESTIONS



### HOW TO PREVENT PIPE CORROSION

PIPE DECOR industrial-grade black pipes and fittings are coated with a rust-preventive oil during manufacturing. For best results, **SEAL THE PIPES TO AVOID ANY RUSTING** after cleaning the kit.

#### **CLEAN AND SEAL INSTRUCTIONS:**

**CLEAN:** Recommended supplies: regular degreasing dish soap, washcloths, gloves (optional)  
1. Wash your pipes and fittings with warm water and dish soap until the oil is completely removed.  
2. Wipe the pipes with a dry washcloth and wait until the pipes are completely dry.

**IMPORTANT: THE PIPES MUST BE COMPLETELY DRY BEFORE YOU START THE SEALING PROCESS.**

#### **SEAL:**

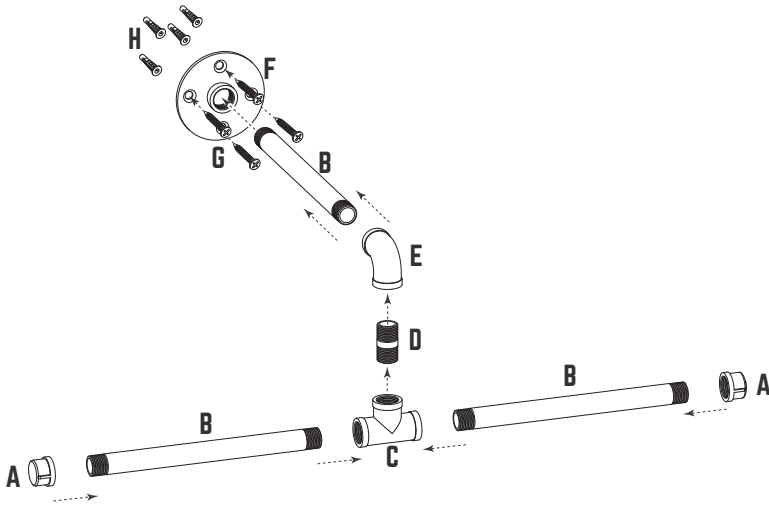
**IF USING POLYURETHANE SPRAY:** Spray each dry pipe and fitting with a polyurethane matte or satin finishing spray and let it dry before assembling the kit.

**IF USING FINISHING WAX:** Coat each dry pipe with a finishing wax. Wait for 20 minutes, then polish the pipe with a dry washcloth by wiping them down. Faster wiping will result in a shinier finish.

ID: 23616

PII# PII365MWD60 - 121040

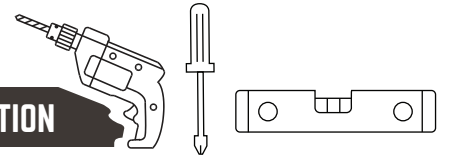
# PIPE DECOR® WALL-MOUNTED T-STYLE CLOTHING RACK-KIT



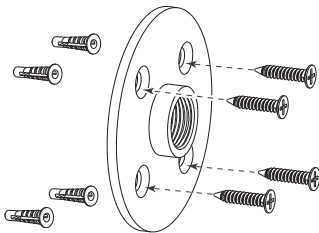
PART	DESCRIPTION	QTY
A	1/2" CAP	2
B	8" NIPPLE	3
C	1/2" TEE	1
D	2" NIPPLE	1
E	1/2" 90° ELBOW	1
F	1/2" FLANGE	1
G	SCREWS	4
H	ANCHORS	4

## EASY INSTALLATION:

## RECOMMENDED TOOLS FOR INSTALLATION

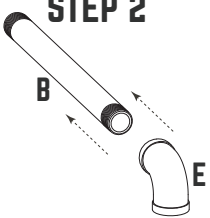


### STEP 1

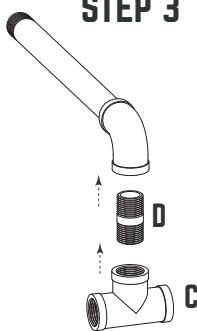


- Place flange against wall in desired location and mark holes with pencil
- Using stud finder, locate and mark wall stud if found
  - A) If a wall stud is present, attach flange to wall with included screws
  - b) If no wall stud is present:
    - Drill pilot holes in wall using 1/4" drill bit
    - Insert anchor fully into pilot hole using hammer and Phillips screwdriver as needed
    - Attach flange to wall using included screws

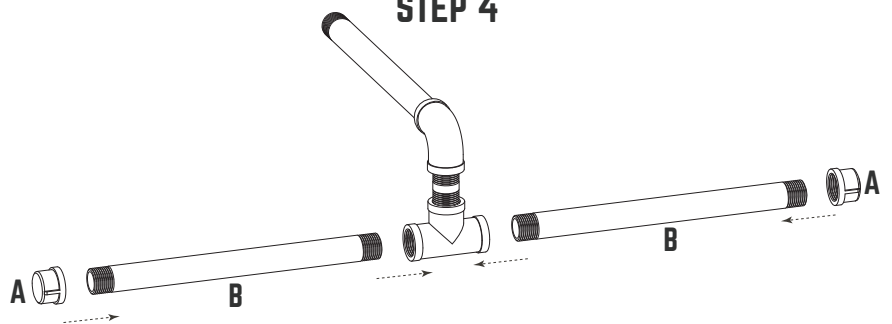
### STEP 2



### STEP 3



### STEP 4



### STEP 5

