



The RSGB-698/2700-3-NF is a heavy-duty, high-performance, vandal proof cellular antenna from RFMAX. This low profile, direct mount antenna is primarily used for cellular machine to machine (M2M) communications across the 3G/4G/LTE bands of 698-2700 MHz. IP67 rated for outdoor use, and perfect for industrial applications when mounting to a metallic enclosure or kiosk which allows it to connect easily to the Verizon, AT&T, T-Mobile, and Sprint (1900 MHz - band 25, 2500 MHz - band 41 band 42, band 71 and 850 MHz) domestic LTE bands.



- 3G/4G/LTE (698-806/806-960/1710-2110/2110-2170/2300-2700 MHz)
- Gain: 3.5 - 5.5 dBi
- New Band 71 (617-698 MHz)
- Max Power: 100 Watts
- Size (Dia x H): 1.44 x 3.30 Inches
- Connector: N-Female
- Rating: IP67
- Color: Black

APPLICATIONS:

- Outdoor M2M Data Collection/Transmission
- NEMA Enclosures with Cellular Modems
- IoT - Internet of Things Antenna
- Vending Machines, Utility Meters, DCU & other applications
- Utility boxes
- Smart metering

ELECTRICAL

Frequency Range	3G/4G/LTE	698-2700 MHz
Average Peak Gain	3G/4G/LTE	-3.5 - 5.5 dBi
VSWR	698-2700 MHz	2:1/2.5:1 dBi
Impedance	50 Ohm	
Radiation	Omnidirection	
Polarization	Vertical	

ENVIRONMENTAL

Hazardous Substances	RoHS Compliant
Temperature	-40°C to 85°C Operating and Storage conformance to IEC 60068
Humidity (Non-Condensing)	5% to 96% Operating and Storage conformance to IEC 60068
Water Ingress	IP67
Military Spec	MIL-STD 810 conformance to vibration

MECHANICAL

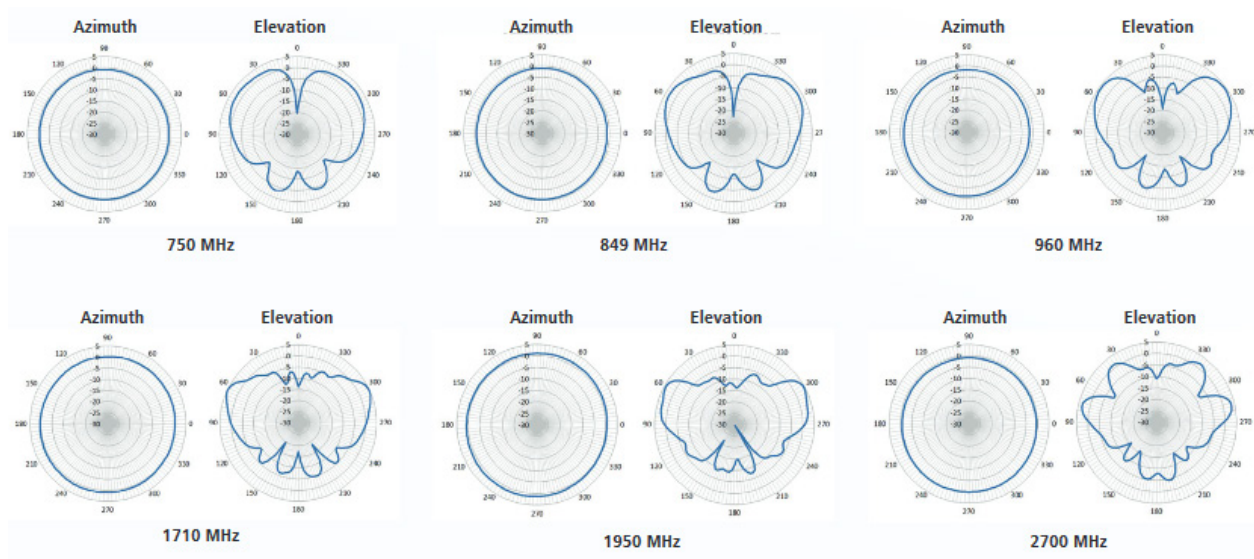
Dimensions	3.65 / 8.38 cm (1.44 / 3.30 in)
Weight	173g (.38lbs)
Color	Black
Connector	N-Female
Max Power	100 Watts

MOUNTING

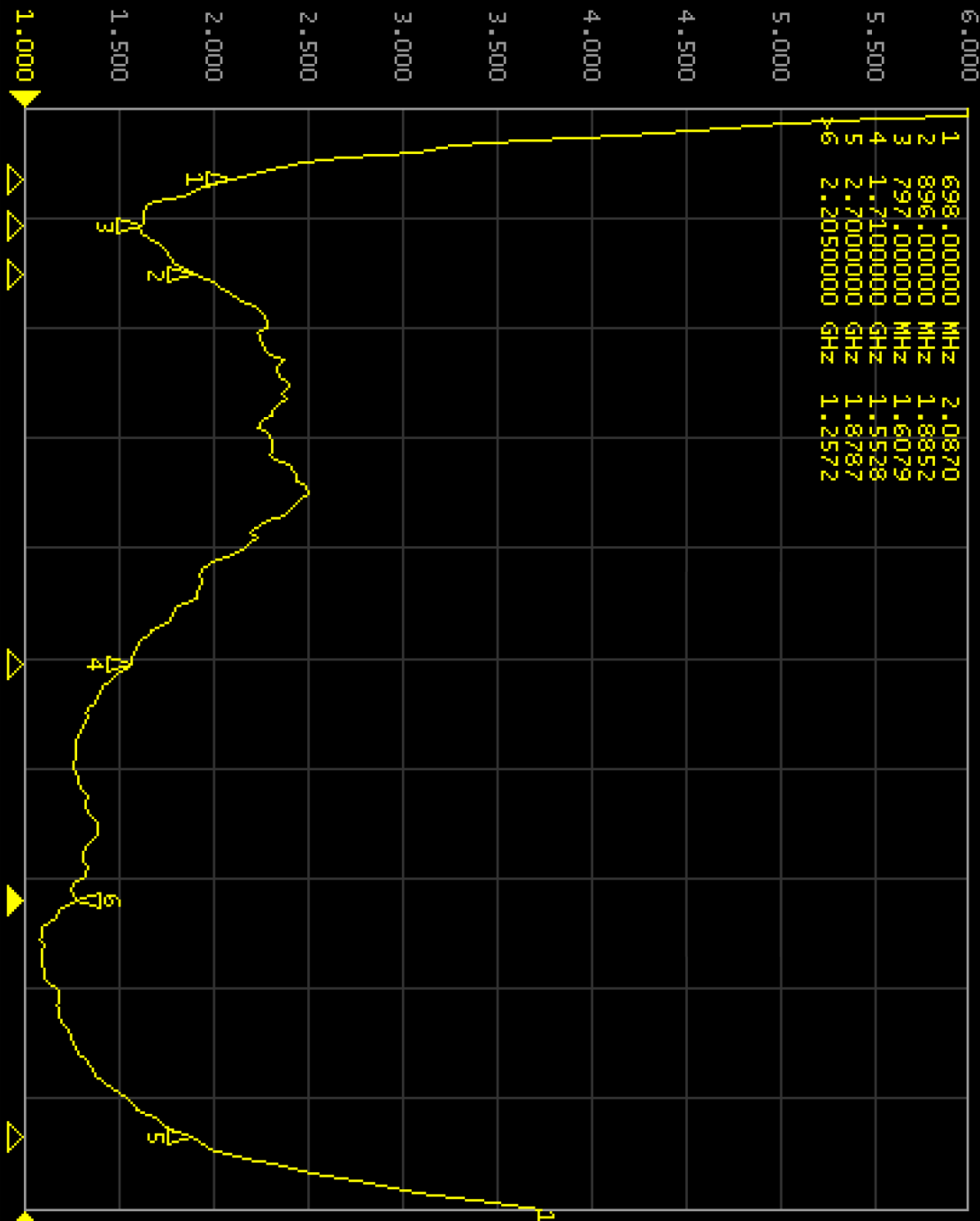
Dimensions	15.9mm (.625in) hole required
------------	-------------------------------



N-Female with Flat Face



▶ [F1] S22 SWR 500.0m / Ref 1.000 [F1]



1 Center 1.699 GHz

IFBW 30 kHz

Span 2.3 GHz

Cor 1

Meas

Stop

ExtRef

Swc

2011-10-20 11:03

Display

Allocate Channels

Num of Traces
1

Allocate Traces

Display Data

Data -> Mem

Data Math
OFF

Edit Title Label

Title Label
OFF

Graticule Label
ON

NOTES:

General Note:

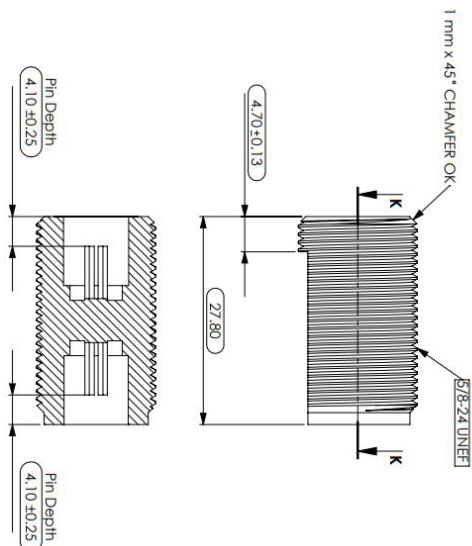
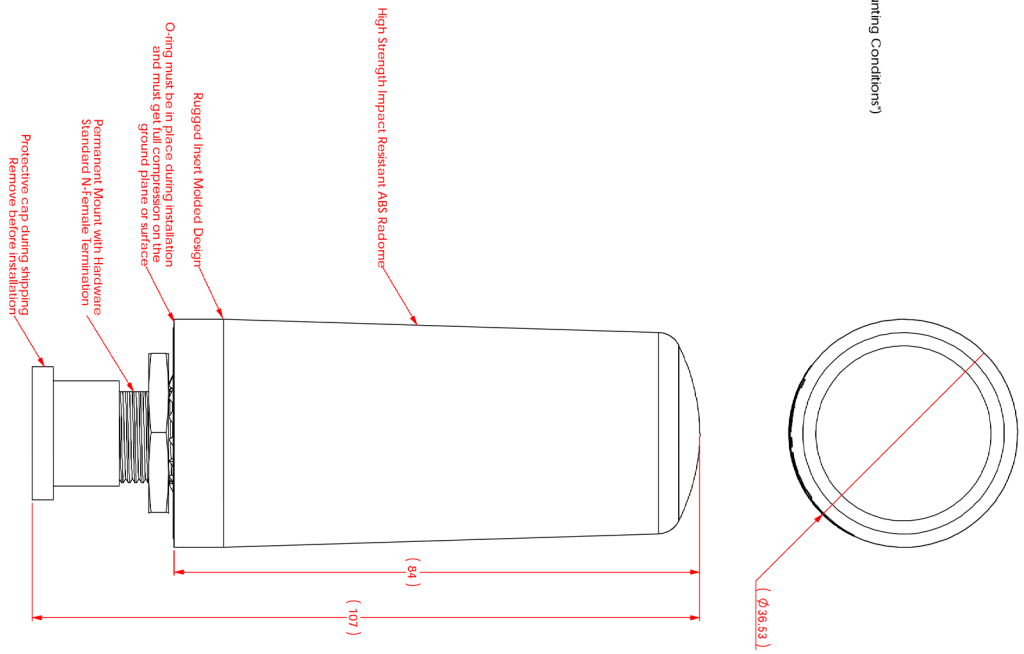
1. All assemblies must be 100% tested for VSWR
2. No component substitutions are permitted

Mechanical Note:

1. Overall Height: 84 mm from G.P.
2. Weight: 5.25 oz
3. IP Rating: IP67
4. Operating temp: -30C to +80C
5. Color: Black
6. Mount: Permanent Mount (See Recommended Mounting Conditions)
7. Installation Torque: 4 - 8 ft lbs on Nut

Electrical Note:

1. Frequency Range: 698 - 896 MHz; 1710 - 2700 MHz
2. VSWR: 1.5
3. Nominal Impedance: 50 OHM
4. Gain (dBi): 3 dBi
5. Polarization: Vertical
6. Pattern: Omnidirectional
7. Ground Plane: Tested on 2' x 2' G.P.



Recommended Mounting Conditions:
 Metallic surfaces should be as flat and clean as possible
 Hole should be centered as much as possible

MATERIAL: N/A		TEMP ANGLE PROTECTION		RFMAX	
FINISH: N/A	APPROVALS: DATE	INDICATED DIMENSIONS ARE TO BE USED UNLESS OTHERWISE NOTED WITH FORM 11/20/18		ANTENNAS	
ME:		TOLERANCES UNLESS OTHERWISE SPECIFIED: DIMENSIONS IN INCHES		TITLE:	
RF:		ANGLE: 0 PLACE DECIMAL: 0.05		SIZE DWG NO:	
EM:		DIMENSIONS IN MILLIMETERS		RSGB-698/2700-3-NF	
Prod:		SCALE: 1:1		REV: A	
WEIGHT:		PREVIOUS#:		SHEET 1 OF 1	