



MFB9155

900/800 MHz MAXRAD Fiberglass Base Station (MFB) Omnidirectional Antennas

The MFB 900/800 MHz series are base matched half wave antennas encapsulated in heavy duty fiberglass radomes with a thick walled aluminum mounting base for reliable long term use. All models are DC grounded and UPS shippable.

Features

- White ultra-violet resistant pultruded fiberglass radome
- Thick walled aluminum mounting base
- Unity/3 dB/5 dB/7 dB models
- UPS shippable
- Factory tuned



Technical Data

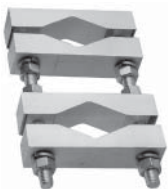
Maximum Power: 150 watts
Normal Impedance: 50 ohms
Radome Material: 1.0" OD pultruded white fiberglass
Radiator Material: Coated steel wire
ESD Protection: DC grounded
Wind Survival: 100 mph
Termination: Unity and 3 dB models, N Female
Mounting Base Diameter: 1-5/16"
Mounting Method: Mast or wall mounted. Mounting hardware is sold separately. MMK1: light duty mast mount for antennas under 30" MMK3: light duty mast mount for antennas over 30" MMK4: heavy duty mast mount MMK6: cast mounting bracket MMK9: Aluminum mast mount for 1-5/16" OD antennas MBSWM: wall mounting bracket for antennas over 30" (two are required)



MMK3



MMK1



MMK4



MMK6



MBSWM



MMK9

Antenna Electrical Specifications

Model	Frequency Range	Factory Tuned Frequency	Gain	Bandwidth @ 1.5:1 VSWR	Vertical Beamwidth @ 1/2 Power
MFB8130	806-866 MHz	813 MHz	Unity	40 MHz	75°
MFB8133	806-866 MHz	813 MHz	3 dB	30 MHz	40°
MFB8135	806-866 MHz	813 MHz	5 dB	20 MHz	22°
MFB8580	806-866 MHz	858 MHz	Unity	40 MHz	75°
MFB8583	806-866 MHz	858 MHz	3 dB	30 MHz	40°
MFB8585	806-866 MHz	858 MHz	5 dB	20 MHz	22°
MFB8353	824-896 MHz	835 MHz	3 dB	30 MHz	40°
MFBW8903	890-960 MHz	N/A	3 dB	70 MHz	40°
MFBW8905	890-960 MHz	N/A	5 dB	70 MHz	22°
MFB8963	896-940 MHz	898 MHz	3 dB	30 MHz	40°
MFB8965(NF)	896-940 MHz	898 MHz	5 dB	20 MHz	22°
MFB9387	896-940 MHz	938 MHz	7 dB	20 MHz	17°
MFB8967(NF)	896-940 MHz	898 MHz	7 dB	20 MHz	17°
MFB9150	902-928 MHz	915 MHz	Unity	20 MHz	75°
MFB9153	902-928 MHz	915 MHz	3 dB	20 MHz	40°
MFB9155(NF)	902-928 MHz	915 MHz	5 dB	20 MHz	22°
MFB9155RPC	902-928 MHz	915 MHz	5 dB	20 MHz	22°
MFB9157(NF)*	902-928 MHz	915 MHz	7 dB	20 MHz	17°

* Bandwidth @ 2.0:1 VSWR