

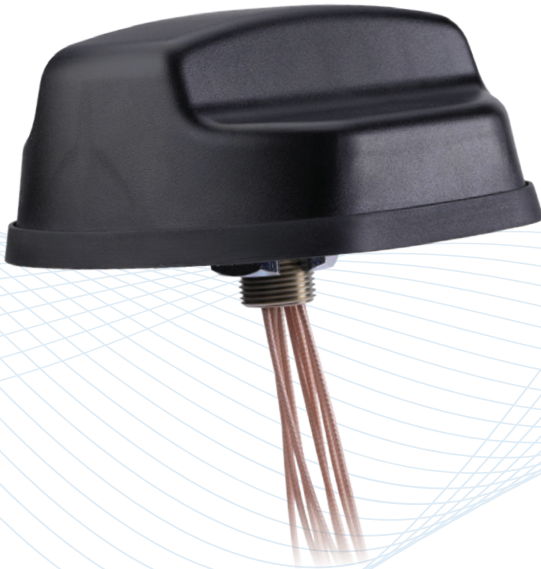
INSTALLATION INSTRUCTIONS



Coach™ II

Permanent Mount Mobile Antenna

Dual Carrier | GNSS | Multiband | 4G LTE | 5G | 802.11ax



GL9X1AX-SF
GL7X1AX-SF
GL4X4-SF-PLK

INSTALLATION INSTRUCTIONS

Coach™ II GL9X1AX-SF, GL7X1AX-SF, GL4X4-SF-PLK

Stud Mount (Typical Installation)

1. Select a mounting location with gentle surface curves to ensure a proper seal with 203.2 mm (8 inches) of ground plane in any given direction around the antenna. Position the antenna at least 406.4 mm (16 inches) from any adjacent antennas or metallic structures. Allow for 50.8 mm (2 inches) of clearance below the mounting surface for the mounting stud and cable routing. Ensure that there is 50.8 mm (2 inches) in diameter around the mounting hole for the mounting nut and tightening procedure.
2. Cut or drill a 25.4 mm (1 inch) hole through the mounting surface (Figure 1).
3. Ensure that the hole is free of any burrs and sharp edges to prevent cable damage and VHB adhesive contamination during installation.
4. Clean the mounting surface around the hole. The surface must be free of any debris that would prevent the inner foam gasket from adhering or the outer rubber gasket from forming a seal.
5. Feed the cables through the hole, taking care not to damage the jacket, and route them to desired location.
6. Remove the liner from the inner foam gasket, insert the mounting stud through the hole, and position the antenna onto the mounting surface.
7. Beneath the mounting surface, install the slotted lock nut onto the mounting stud and tighten by hand. Then tighten with a wrench until the antenna is fully seated or with a torque wrench to 14 Nm (10.5 lbf•ft) minimum.
8. Visually inspect the outer rubber gasket to make a proper seal against the mounting surface and radome. If the locking nut includes a set screw locking feature, torque down the locking nut as directed above, then torque the set screw to 3.5 Nm (2.2 lbf•ft).

INSTALLATION INSTRUCTIONS

Coach™ II GL9X1AX-SF, GL7X1AX-SF, GL4X4-SF-PLK

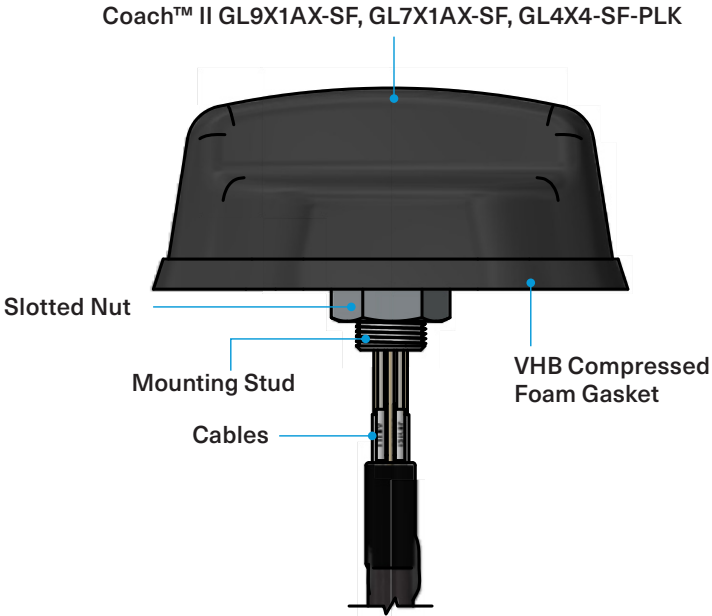
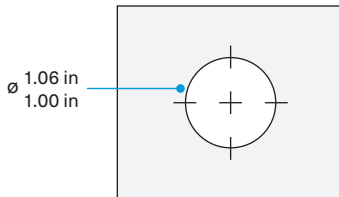


Figure 1: Mounting Hole



Coach™ II GL9X1AX-SF, GL7X1AX-SF, GL4X4-SF-PLK

Need help?

For assistance with installation, please contact

T: +1 630 372 6800



PCTEL, Inc.

T: +1 630 372 6800 | pctel.com | NASDAQ: PCTI

Specifications subject to change without notice. PCTEL® and Coach™ are trademarks or registered trademarks of PCTEL, Inc.
©2020 PCTEL, Inc. All rights reserved. (December 2020)