

## Thick Surface Mounts - BRASS “BMA” Series

3/8” or 3/4” hole; 1-1/8”-18 thread; installs from above; can be used for metal thickness up to 1/8”

Model	Length of Coax	Coax	Connector*	Type
BMA38**	None	N/A	None	N/A
BMA-NC**	17'	RG-58/U	None	N/A
BMAFLC-NC	17'	RG-58 PTFE	None	N/A
BMA	17'	RG-58/U	PL259	Solder
BMACP	17'	RG-58/U	PL259	Crimp
BMANCP	17'	RG-58/U	N	Crimp
BMABN	17'	RG-58/U	BNC	Crimp
BMAC	17'	RG-58/U	TNC	Crimp
BMAPL	17'	RG-58/U	Mini-UHF	Crimp
BMAML195MSMA	17'	Pro-Flex™ Plus 195	Male SMA	Crimp
BMAMSMA	17'	RG-58/U	Male SMA	Crimp

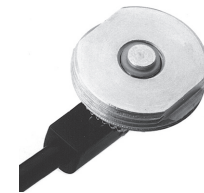


BMA

## Thick Surface Mounts - BMATM Series

3/8” or 3/4” hole; 1-1/8”-18 thread; thick plate; installs from below; can be used for metal thickness to 3/16”

Model	Length of Coax	Coax	Connector*	Type
BMATM-NC	17'	RG-58/U	None	N/A
BMATMML195NC	17'	Pro-Flex™ Plus 195	None	N/A
BMATM	17'	RG-58/U	PL259	Solder
BMATMCP	17'	RG-58/U	PL259	Crimp
BMATMC	17'	RG-58/U	TNC	Crimp
BMATMMSMA	17'	RG-58/U	Male SMA	Crimp
BMATMPL	17'	RG-58/U	Mini-UHF	Crimp
BMATMFFME	17'	RG-58/U	Female FME**	Crimp
BMATM38	N/A	None	None	N/A



BMATM

## K/KE794 Surface Mounts

3/4” hole for up to 1/2” Thick Roof Thickness

Model	Length of Coax	Coax	Connector
K794	17'	RG-58/U	None
KE794	30'	RG-58/U	None



K794 Series

\* Connectors are shipped loose. Connectors may be attached upon request for an additional charge

\*\* This mount installs from below.

For other connector options, please refer to the Mobile Antenna Mounts Configurator Part Number Guide.