

INDEX

Product Intruduction **01**

- 1.Product Description
- 2.Function Description

How to Use **02**

- 1.Scooter Assembly
- 2.Vehicle Activation
- 3.Battery Charging
- 4.Folding and Carrying

Safety Warning **03**

- 1.Correct Driving Instructions
- 2.Safety Instructions

Maintenance and After-sales **04**

- 1.Maintenance and Servicing
- 2.After-sales Service

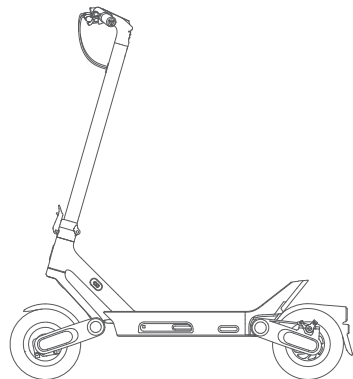
Appendix **05**

- 1.Parameter List
- 2.Troubleshooting
- 3.Trademark and Legal Statement

PRODUCT INTRODUCTION

PART1 Product Description

Product Accessories



Charger



Charging adapter



User Manual



Screw × 6



Installation tools



Attention

When unpacking the electric scooter, please carefully check the contents of the package. If any missing or damaged, please contact local authorized service station or the after-sales E-mail: afterservice03@yadea.com. It is recommended to retain the outer packaging for at least 15 days in case you need to ship the scooter in the future.

PRODUCT INTRODUCTION

Component Diagram



PRODUCT INTRODUCTION

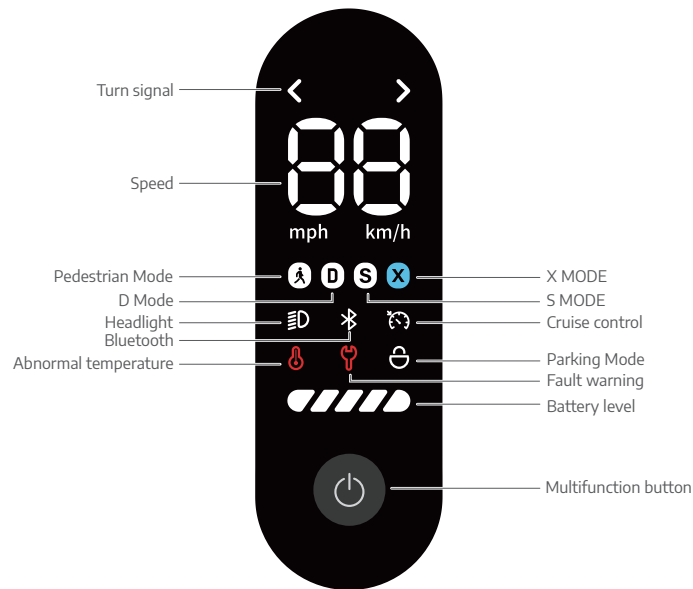
Instruction to Handlebar Function



Description	Function Description
Function Description	Long press the button to turn on/ off Short press * 1 for headlight switch Short press * 2 for gear switch Short press * 3 for metric switch
Turn signal button	Power on/off the left/right turn signal.
Electric throttle	After power on, first slide by foot until reaching a speed of 3 km/h, then press it to accelerate and release to decelerate.
Brake lever	After power on, squeeze the brake lever, the scooter motor will brake and the tail light will flash.
Folding latch	After folding the scooter, hook the latch of stem to the buckle for safety.
Bell	It is used to alert pedestrians

PRODUCT INTRODUCTION

Dashboard



PRODUCT INTRODUCTION

Dashboard

No.	Icon	Description	Icon display
1	< >	Turn signal	Light up if the left/right turn button is pressed.
2	km/h	Speed	Switch between imperial (mph) and metric (km/h) systems via "Yadea" App.
3		Speed Mode	Show the current riding Pedestrian Mode, D Mode, S Mode, and X Mode.
4		Headlight	Light up if the headlight is turned on and light off if turned off.
5		Bluetooth	Light up if the Bluetooth is connected and light off if disconnected.
6		Cruise control	Light up if the cruise control function is enabled.
7		Abnormal temperature	If the battery pack or electric thermometer overheats, the overtemperature icon lights up.
8		Fault warning	In case of fault, the fault icon lights up and the fault code is displayed.
9		Parking Mode	Light up if "Bluetooth Parking" is enabled via "Yadea" App.
10		Battery level	Display the remaining battery of the scooter.

PRODUCT INTRODUCTION

PART2 Function Description



Multi-function button

1 Press once & long press

Power on, and the screen lights up. (It will be turned off automatically after 10 min without operation.)
Press once or long press it to power off, and the screen lights off.

2 Press once & short press

Turn on/off the headlight.

3 Press twice & continually short press

Cyclically switch the Modes; the scooter is set to D Mode for the first startup after delivery;
the scooter will keep the pre-shutdown Mode when it is turned on again after power-off.

4 Press three times & continually short press

Switch between the imperial (mph) and metric (km/h) systems.

Mode	EN17128	UL	Instruction
Pedestrian Mode	6km/h	6km/h	Push Mode; suitable for pushing the scooter to make beginners familiar with riding.
D Mode	15km/h	15km/h	Drive Mode; suitable for daily riding.
S Mode	25km/h	32km/h	Sports Mode; recommended to use after mastering the riding skills.
X Mode	25km/h	32km/h	Extreme Speed Mode; apply stronger acceleration, recommended to use after mastering the riding skills.

Attention: The X mode is disabled by default when leaving the factory, and required to be unlocked after connecting to the scooter via Yadea APP. After unlocking, you can switch 4 riding modes via pressing the multi-function button.



Bluetooth Parking

The “Bluetooth parking” function is disabled by default before delivery, and can be enabled via “Yadea ” APP after the scooter is bound.

In parking Mode, the screen is off and only the parking icon is displayed; the button function is locked, and the throttle and Brake lever are disabled. In parking mode, if the battery runs out, the Mode is automatically canceled.

After parking for 6 hours, this Mode will be canceled automatically and the scooter will automatically shut down.

In parking mode, if the scooter is detected to vibrate or move, the buzzer will alarm, and the front and rear lights flash until there is no abnormality.



Cruise control

The cruise control function can be enabled through the “Yadea ” APP.

After the scooter power on, in the D, S or X Mode, press the thumb throttle to maintain a constant position unchanged for 8 seconds, the buzzer will beep once and the scooter will enter the cruise control Mode, then release the throttle, and the scooter will continue to drive at the current speed.

When driving in cruise control Mode, hold the brake handle/press the thumb throttle again to disable the cruise control function, and the scooter will return to normal driving control.

Attention:To avoid danger and accidents, do not use the cruise control function under complicated road conditions or bad weather. According to regulatory requirements, only the UL version is suitable for this function, and the actual product shall prevail.



Gyroscope

The scooter’s tilting attitude can be detected over the ride. When the body tilts at an angle of 45°, the power supply of the scooter will be automatically turned off to avoid secondary injury.



Energy recovery

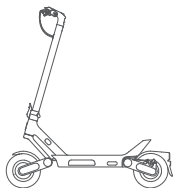
The “Energy Recovery” function can be enabled through the “Yadea ” APP. Energy recovery intensity: Adjustable at high, medium and low levels.

During the ride, squeeze the brake lever to activate the electronic brake, store electrical energy through the energy recovery brake, and further convert it into driving energy.

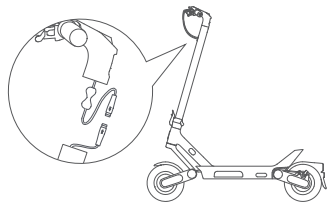
HOW TO USE

PART1 Scooter Assembly

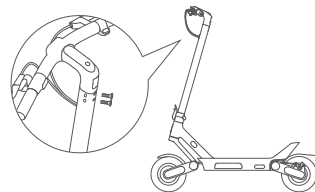
Installation Steps



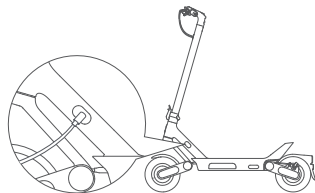
- 1** Unfold the stem and secure the folding wrench to stabilize the scooter.



- 2** Connect the power cable within the handlebar to the main line connector of the vertical stem, and install the handlebar onto the vertical stem.



- 3** Lock the screws with the hex wrench within the installation tool.



- 4** After installation completely, plug the charging plug into the charging port and connect the power supply to charge for **2-3 seconds** to activate the battery, and then you can turn on the scooter to ride.

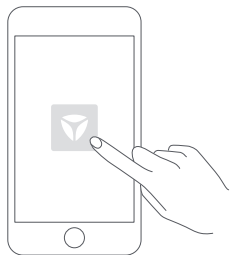
Attention

1. Please follow the instructions to install the components. Improper installation may cause safety risks.
2. When installing the handlebar, please set it in the correct angle.
3. Fix the scooter and stem during installation to avoid injury caused by tipping.
4. Do not turn on the power supply before the installation is completed. When installing components, please apply appropriate force to avoid component damage or scooter body failure.

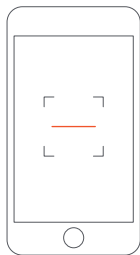
HOW TO USE

PART2 Vehicle Activation

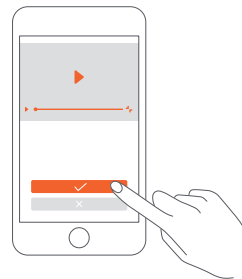
Activation Procedure



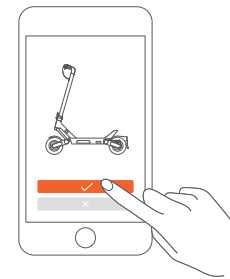
1、Open the "Yadea" APP. Follow the prompts on the APP screen to complete account registration and login.



2、Scan the QR code on the scooter body, or find the device via Bluetooth, and bind the scooter.



3、Watch the video "Driving Guide" in its entirety, and then click "Activate" or watch the video again.



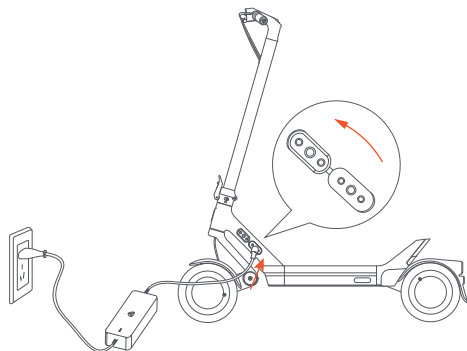
4、The scooter is activated successfully. Please start your ride.

HOW TO USE

PART3 Battery Charging

Charging method

Open the charging port cap and connect the charger properly.



Attention

Please charge the scooter with Yadea original charger, and do not use any charger of other brand and Model.

Do not connect the power supply and charger if the charger or power socket is wet.

If the red indicator on the charger is steady on, the battery is under charging. If the green indicator is steady on, the battery is fully charged and the power supply should be disconnected promptly.

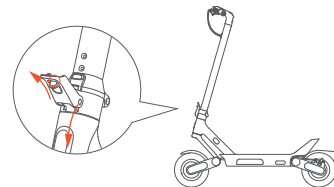
The charging port cap should be covered tightly when not charging or after charging.

It is recommended to place the scooter outdoors to charge, but to protect it from rain and sun exposure.

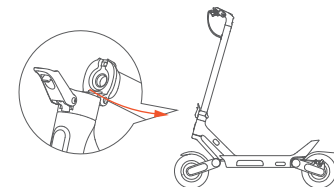
HOW TO USE

PART4 Folding and Carrying

How to fold the scooter

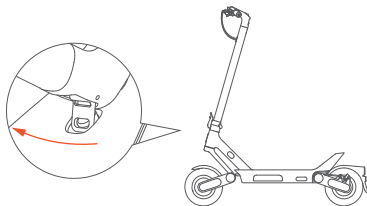


- 1 Hold the stem and push the safety button with thumb to open the folding wrench, and then fold down the stem.



- 2 Open the wrench, align it to the position of the folding buckle, hook the folding latch of the stem to the buckle to complete the whole folding steps.

How to unfold the scooter



Rotate the wrench to release it from the hook, and lift up the handlebar. Unfold the stem to its maximum position, hold the stem with hand, and press folding handle until the stem is locked.

How to carry the scooter



Attention

Make sure that the scooter is turned off before carrying it. After the scooter is folded, a single person can carry it by holding the stem with both hands at the balance point.

Avoid water sources, heavy loads, impacts, severe drops or strong vibrations when carrying the scooter, which may cause damage to the batteries and circuits if they occur or if liquids seep inside the scooter.

SAFETY WARNING

PART1 Correct Driving Instructions

Tips for Initial Use



For the first time, please practice according to the manual. Do not ride the scooter until you have fully mastered the riding skills.

There is a risk of falling or injury during the ride, so please wear a helmet and safety Mode at all times. The Mode shall be of good quality and worn in the correct position.

For your first ride, please select an open area and a flat road and do not drive into areas with complex road conditions.

Pre-Riding Inspection



- | | |
|--------------------------|--------------------------------------------------------------------------|
| 1、 Brake | Whether the brake is loose/too tight. |
| 2、 Electric throttle | Whether it can bounce back normally. |
| 3、 Handlebar | Whether it rotates flexibly and whether it is loose or stuck. |
| 4、 Folding wrench | Check whether the screws in the folding part are loose and shaking. |
| 5、 Dashboard | Whether all indicators light up/off normally. |
| 6、 Battery level | Turn on the power switch and check whether the battery is normal in SOC. |
| 7、 Front and rear lights | Whether they are in good condition and work normally. |
| 8、 Reflector | Whether it is damaged or contaminated. |



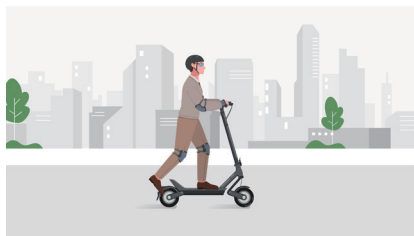
Attention

Please conduct a basic inspection on the scooter before each ride. If there are obvious abnormalities or abnormal alarm sound, do not use the scooter. For any questions, please contact an authorized service station or after-sales E-mail: afterservice03@Yadea.com to obtain professional guidance or maintenance services.

SAFETY WARNING

PART1 Correct Driving Instructions

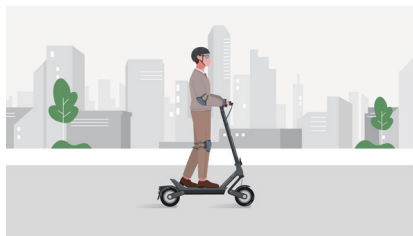
Learn to Drive



- 1、 Put one foot onto the deck and use the other foot to push off the ground.



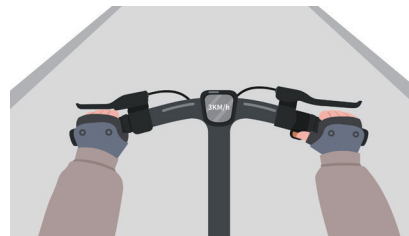
Please check the battery level before riding, and judge whether the remaining power is sufficient according to the travel distance, otherwise please charge it in time.



- 2、 When the scooter starts to slide, put both feet on the deck, keep your body balance, and gently press the thumb throttle to accelerate.



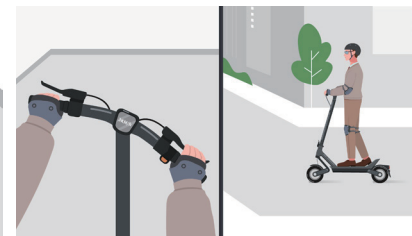
To avoid accidental contact, this product is designed with a non-zero start. When the sliding speed of the scooter is $> 3 \text{ km/h}$, the throttle can be started to accelerate.



- 3、 During the ride, release the thumb throttle to slow down the scooter, squeeze the Brake lever tightly to brake it, and hold the Brake lever strongly to apply emergency braking.



During emergency braking, it is possible to fall down and suffer serious injuries due to loss of traction. Please maintain an appropriate riding speed and be aware of potential hazards.



- 4、 During steering, slow down and turn the handlebar slowly.

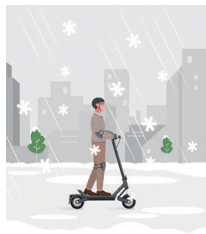


Please maintain an appropriate riding speed to avoid any potential injury caused by sudden turning.

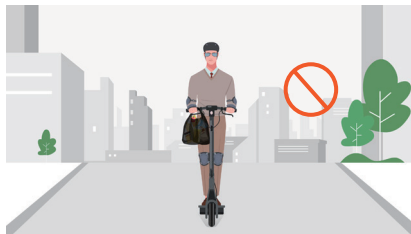
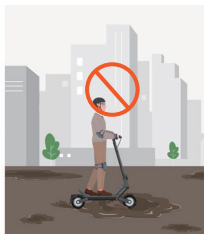
SAFETY WARNING

PART2 Safety Instructions

Prohibitions for Riding



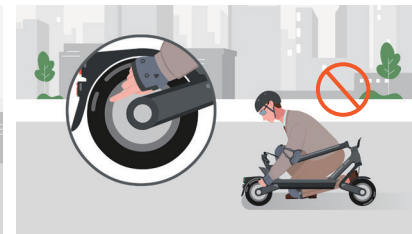
Do not ride in bad weather, or ride in water.



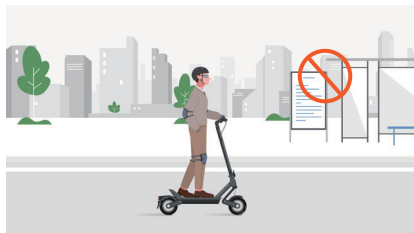
Do not hang heavy objects on the handlebar.



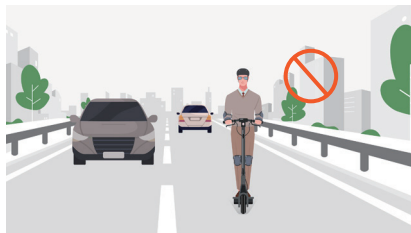
Do not ride up or down steps or stairs or jump over obstacles.



Do not touch the wheel hub, motor or brake system.



Do not ride with one hand.



Do not drive into the traffic lanes.



Do not ride while wearing highheeled shoes or slippers.



Do not ride while carrying others or children.

SAFETY WARNING

PART2 Safety Instructions

Safety Instructions

- Before using the electric scooter (hereinafter referred to as the scooter), please read carefully and strictly follow the contents marked "Warning", "Attention" in the Manual. Your familiarization and understanding will improve riding safety.
- The scooter is a recreational product. You need to master riding skills through practice. Yadea Technology Group Co., Ltd. will not be liable for any property damage, incidents, personal injury or legal disputes caused by lack of riding experience or failure to comply with the safety requirements in the Manual.
- Following the safety precautions in the Manual will reduce risks, but not completely eliminate all risks, because there is a risk of injury or death due to loss of control, collision or fall when using the scooter.
- Scooter is the same as other vehicles, the faster the speed, the longer the braking distance, and emergency braking on wet road may cause the wheels to slip and lose balance.
- When the scooter drives into a public area, it will become one of transportation means, so there are also possible safety risks of transportation means. In order to protect the safety of yourself and others, please strictly follow the instructions in the Manual and comply with the national and local traffic laws and regulations. Do not ride the scooter in areas prohibited by law.
- When the scooter is driven on public roads, even if it is operated in full accordance with the safe riding instructions in the Manual, it may be exposed to risks caused by illegal driving and improper operation by other people and other transportation means.
- Make sure to use parts approved by Yadea. If you need to replace any parts, please contact professional maintenance personnel. There are no user-serviceable parts for this product, so do not disassemble or modify the performance and configuration of the scooter by yourself. Improper installation may result in serious damage or injury and void the warranty, and you will be held liable for any damages incurred.
- Do not lend the scooter to someone who cannot operate it to avoid injury. If lending the scooter, please forward the Manual and ensure the safety of the new user.
- All accessories, packaging and detachable parts contained in this product should be kept away from children or pets to avoid injury caused by improper play, suffocation and accidental ingestion.
- Please purchase the electric scooter through formal channels, and properly keep the invoice which is required for warranty in case of quality problems found during use.

Riding Precautions

- When riding, you should respect the pedestrians' right of way and avoid scaring them. When approaching pedestrians, ring the bell and slow down to pass.
- When riding, observe the terrain, maintain an appropriate speed, and keep a reasonable safety distance from other people or other transportation means. In case of difficult terrain, please get off and push the scooter.
- Always keep your hands on the handlebar and feet on the pedals during riding. Concentrate on riding and do not use your phone, wear headphones, or do anything other than riding.

-
- Do not suddenly speed up or slow down when riding. It is strictly forbidden to brake in downhill or high-speed driving; otherwise there may be a risk of losing control, collision or falling due to the center of gravity moving forward.
 - Do not use the scooter as a goods carrier.
 - Do not show your riding skills during the ride.
 - Do not press the thumb throttle to accelerate when pushing the scooter.

Requirements for Riding Environment

- Do not ride in environments with dense fog, smoke or low visibility. Make sure that you can see the road clearly and that others can also see you clearly.
- It is required to ride in a non-motorized lane. If on roads without a non-motorized lane, drive on the right side or follow local traffic laws.
- When riding at night, it is recommended to wear reflective clothing and drive slowly at low speed.
- Do not ride on pothole, mud, sand, grass, gravel pavement or stairs.
- Do not drive through water or directly ride through puddles. Water ingress into the scooter may wet the battery, triggering the risk of functional damage, fire or even explosion. Damage and loss due to water ingress is not covered in the warranty.
- Generally speaking, low temperature affects the battery life of the product, and the battery life and performance are best at room temperature of 25 °C.
- It is not recommended to use this product at altitudes greater than 2,000 m.

Requirements for Rider

The following persons are not allowed to ride scooter:

- Individuals who are overtired or feel less energetic;
- Pregnant women, children, and the elderly; age requirement: 16 to 50 years old;
- Individuals affected by alcohol or other drugs;
- Individuals with mobility impairment due to illness;
- Individuals who are overweight; the recommended maximum load is ≤ 120 kg;
- Individuals who are unable to maintain physical balance for other reasons.



Attention

Do not wear long skirt or loose clothing when riding to prevent injuries caused by clothing getting stuck with body parts.

MAINTENANCE AND SERVICES

PART1 Maintenance and Servicing

Cleaning Methods

- If the surface of the scooter is contaminated with stains, wipe the appearance with soft cloth dipped in a small amount of water, and then dry the body.
- Do not directly pour a large amount of water on the brake parts, motor and battery box to prevent internal water ingress from affecting the service life of the scooter parts.



Attention

- Do not use alcohol, gasoline, acetone or other corrosive and volatile solvents for cleaning, which may seriously damage the appearance and internal structure of the scooter.
- Do not wash the scooter with pressure water pipe and water gun or clean it with forcefully.



Warning

- Disconnect the power supply of the scooter and keep it off before cleaning. Fasten the rubber cap of the charging port tightly; otherwise there may be a risk of electric shock or serious damage to the electronic components due to internal water ingress.
- Do not contact live parts with wet hands or metal conductors.

Storage Method

- When used in summer, make sure that the ambient temperature should not above 40 °C, and the scooter should not be placed outdoors under the sun for a long time.
- When used in winter, make sure that the ambient temperature should not be lower than -10 °C. If the temperature is below 0 °C, the scooter should be placed at normal room temperature for half an hour before charging.
- If the scooter will not be used for a long time, please store it in a flat, stable, dry and cool room to avoid long-term exposure to the outdoors. Exposure to sun and rain may corrosion or deterioration of the scooter's components and reduce the service life of the battery pack.

Tire Maintenance

- The tire of this product is pneumatic vacuum tire, with a recommended tire pressure range from 40 to 50 psio. To ensure riding safety, it is recommended to check the tire pressure once a month. If the tire pressure is insufficient, please inflate the tire in time.
- It is complicated to remove the wheel. If you need to replace the tire, please contact professional maintenance personnel. Improper self-assembly may lead to component failure or scooter body instability.

Battery Maintenance

- Do not remove the battery by yourself. If there is any problem, please contact the customer service department of Yadea or professional maintenance personnel to deal with it.
- Charge the battery within the ambient temperature range from 0 °C to 45 °C.
- When the operating temperature is below 0 °C, the performance and life of the battery may be reduced.
- Do not discard battery packs at will. For details about recycling and treatment of used or damaged batteries, refer to local laws and regulations to avoid environmental pollution.



Attention

- The battery will continue to consume power when the scooter is turned off. Under normal circumstances, the battery with 60% battery level can be standby for about 180 days.
- If the battery will not be used for a long time, it should be stored with 60% battery level or more and is recommended to be charged every 30-60 days to avoid functional damage due to exhaustive discharge of the battery.
- The intelligent device inside the battery can monitor the charging/discharging status of the battery, and damage caused by overcharging or over-discharging is not covered by the valid warranty.



Warning

- Do not use battery packs of other models or brands, or there may be safety risks.
- Do not disassemble, squeeze or puncture this product. Do not open or pierce the shell; avoid short circuit caused by metal objects in contact with battery contacts; otherwise, the battery may be damaged.
- Do not put this product into water and fire (including stove, heater and other heat sources) or directly expose it to environments with temperatures above 50 °C.
- Water in the battery may damage the internal circuit, with the risk of fire or even explosion. If the battery is suspected to have water internally, stop using it immediately and contact the local service station for testing.
- Do not take out the battery pack by yourself, because it is complicated to disassemble the battery and improper operation may affect the operation of the scooter body.
- Do not disassemble or repair the battery by yourself; otherwise it may result in battery failure, overheating, and even a risk of fire.
- Do not use the scooter when the ambient temperature exceeds its operating temperature range, because too high/low temperature will result in maximum power limitation.

MAINTENANCE AND SERVICES

PART2 After-sales Service

Warranty Policy

- YADEA electric scooter products carry out warranty in strict accordance with the laws and regulations of various countries or regions, the warranty principle is to adjust and repair, replace new parts as a supplement, the vehicle after warranty should ensure that the functions are normal.
- To the fullest extent permitted by law, YADEA will repair, replace or refund based on actual circumstances. Unless otherwise required by law or otherwise undertaken by YADEA, the warranty shall be limited to the original country of purchase.
- Normal wear and tear, force majeure, abuse or damage caused by the user's negligence or fault of the user are not covered. For warranty details, please refer to the official website of YADEA (www.yadea.com).
- If you have any questions about after-sales service, please contact the seller for help anytime.

APPENDIX

Parameter List

Parts	Items	Parameters
Basic information	Product model	YDX1
	Unfolding size	1220*585*1310mm
	Folding size	1220*585*555mm
	Net weight	29kg
Scooter	Axial distance	945mm
	Maximum load	120kg
	Maximum speed	eKFV:20km/h (12mph) EN17128:25km/h (15.5mph) UL:32km/h (20mph)
	*Rated range	65km (40miles)
	Maximum slope	30%
	Driving mode	Rear wheel drive
	Braking mode	Drum brake + double-acting disc brake + Electronic brake
	Waterproof grade	IPX5
	Service temperature	-10℃~40℃
	Storage temperature	-20℃~60℃
Battery	Battery capacity	46.8VDC 14.5Ah
	Rated voltage	46.8VDC
	Charging ambient temperature	0~45℃
	Intelligent BMS	Over-voltage / under-voltage / short-circuit / over-current / over-heating protection
Charger	Input voltage	AC100~240V
	Rated output voltage	54.6V
	Charging time	7-8h

Parameter List

Parts	Items	Parameters
Motor	Type	Hall BLDC
	Rated power	800W
	Maximum output power	1500W
Tire	Type	Self-healing tubeless tires
	Size	10 inches
Damping	Damping mode	Front & rear polymer shock absorber

* Rated range: Vehicle under full charge, 75kg load, ambient temperature 25℃, flat road, 15km/h speed measured.

* The factors affecting battery life include speed, load, number of starts and stops, ambient temperature, etc.

Troubleshooting

Fault code	Fault indication
29	Batteriespannung zu hoch
30	Batteriespannung zu niedrig
34	Instrumentenkommunikation abnormal
50	Drehgas abnormal
51	Bremse links abnormal
52	Bremse rechts abnormal
55	Bluetooth-Kommunikation abnormal

Trademark and Legal Statement

- We have tried the best to cover the description and explanation of all the functions of the scooter while printing the Manual. However, due to the continuous improvement of product characteristics and design changes, your scooter may be different from the color and appearance shown in the Manual, so actual product shall prevail.
- Yadea Technology Group Co., Ltd. reserves all rights.
- Yadea Technology Group Co., Ltd. Reserves the copyright of the Manual which shall be reproduced without written permission.
- The right of interpretation of this manual belongs to Yadea Technology Group Co., Ltd.